



5801 Pelican Bay Boulevard, Suite 300, Naples, FL 34108

Legal Description

Part of Sections 4-9, and 16-18, Township 48 South, Range 29 East, and Sections 31-33,
Township 47 South, Range 29 East, Collier County, Florida
(SRA)

COMMENCING at the Southwest corner of Section 16, Township 48 South, Range 29 East, Collier County, Florida;

Thence along the west line of said Section 16, North 01°04'07" West 150.00 feet to the POINT OF BEGINNING;

Thence leaving said line, South 88°57'06" West 354.33 feet;

Thence North 01°07'23" West 200.01 feet;

Thence South 88°57'05" West 2,215.48 feet;

Thence South 88°55'37" West 1,128.15 feet;

Thence South 89°32'56" West 1,286.63 feet;

Thence North 00°27'04" West 1,089.55 feet;

Thence South 89°32'56" West 242.19 feet;

Thence South 89°24'19" West 3,977.40 feet;

Thence North 00°01'40" East 1,280.68 feet;

Thence North 90°00'00" East 1,125.68 feet;

Thence North 00°19'38" West 520.46 feet;

Thence North 09°27'58" East 38.31 feet;

Thence North 14°56'15" East 32.59 feet;

Thence North 59°02'49" East 24.49 feet;

Thence North 68°12'25" East 33.93 feet;

Thence North 73°08'54" East 72.42 feet;

Thence North 69°14'09" East 65.14 feet;

Thence North 61°11'58" East 47.93 feet;

Thence North 56°44'10" East 80.38 feet;

Thence North 54°18'17" East 82.75 feet;

Thence North 51°34'19" East 552.31 feet;

Thence North 12°32'03" East 52.12 feet;

Thence North 16°41'34" West 780.99 feet;

Thence North 38°40'18" West 48.27 feet;

Thence North 55°58'45" West 175.13 feet;

Thence North 78°14'12" West 46.21 feet;

Thence South 86°41'17" West 358.77 feet;

Thence North 43°16'35" West 44.00 feet;

Thence North 01°28'53" West 584.34 feet;

Thence North 88°45'30" East 2,256.99 feet;

Thence North 11°31'40" West 679.82 feet;

Thence North 29°57'19" East 43.24 feet;

Thence North 80°03'11" East 750.96 feet;

Thence North 82°05'14" East 23.32 feet;

Thence North 08°45'48" West 831.15 feet;

Thence 82.76 feet along the arc of a non-tangential circular curve concave Southeast having a radius of 128.55 feet through a central angle of 36°53'11" and being subtended by a chord which bears North 23°30'23" East 81.34 feet to a point of reverse curvature;

Thence 149.95 feet along the arc of a circular curve concave West having a radius of 215.80 feet through a central angle of $39^{\circ}48'43''$ and being subtended by a chord which bears North $22^{\circ}02'37''$ East 146.95 feet;
Thence North $02^{\circ}08'16''$ East 434.86 feet;
Thence North $38^{\circ}40'13''$ East 124.61 feet;
Thence North $23^{\circ}55'58''$ East 503.82 feet;
Thence North $89^{\circ}19'06''$ East 272.53 feet;
Thence North $81^{\circ}10'42''$ East 718.98 feet;
Thence North $09^{\circ}56'39''$ East 638.73 feet;
Thence North $73^{\circ}36'58''$ East 172.46 feet;
Thence North $10^{\circ}53'22''$ East 171.73 feet;
Thence 327.51 feet along the arc of a non-tangential circular curve concave Southwest having a radius of 275.44 feet through a central angle of $68^{\circ}07'37''$ and being subtended by a chord which bears North $39^{\circ}53'35''$ West 308.56 feet;
Thence North $73^{\circ}57'24''$ West 492.85 feet;
Thence 313.21 feet along the arc of a non-tangential circular curve concave South having a radius of 331.73 feet through a central angle of $54^{\circ}05'52''$ and being subtended by a chord which bears North $90^{\circ}00'00''$ West 301.71 feet;
Thence South $62^{\circ}57'04''$ West 506.32 feet;
Thence 155.39 feet along the arc of a non-tangential circular curve concave Southeast having a radius of 107.24 feet through a central angle of $83^{\circ}01'31''$ and being subtended by a chord which bears South $27^{\circ}09'30''$ West 142.15 feet;
Thence South $14^{\circ}21'16''$ East 287.88 feet;
Thence 341.14 feet along the arc of a non-tangential circular curve concave Northwest having a radius of 168.89 feet through a central angle of $115^{\circ}44'01''$ and being subtended by a chord which bears South $29^{\circ}11'23''$ West 286.03 feet;
Thence South $87^{\circ}03'24''$ West 81.50 feet;
Thence South $19^{\circ}06'00''$ West 178.46 feet;
Thence South $73^{\circ}34'35''$ West 263.81 feet;
Thence South $33^{\circ}42'00''$ West 81.86 feet;
Thence South $51^{\circ}52'05''$ West 1,402.28 feet;
Thence 219.21 feet along the arc of a non-tangential circular curve concave Southeast having a radius of 151.50 feet through a central angle of $82^{\circ}54'07''$ and being subtended by a chord which bears South $22^{\circ}50'28''$ West 200.58 feet;
Thence South $18^{\circ}36'35''$ East 1,047.10 feet;
Thence 196.86 feet along the arc of a non-tangential circular curve concave Northeast having a radius of 170.73 feet through a central angle of $66^{\circ}04'00''$ and being subtended by a chord which bears South $48^{\circ}32'34''$ East 186.14 feet;
Thence South $81^{\circ}34'34''$ East 177.10 feet;
Thence South $14^{\circ}02'28''$ East 106.97 feet;
Thence South $15^{\circ}53'24''$ West 33.42 feet;
Thence South $72^{\circ}18'08''$ West 1,325.01 feet;
Thence North $16^{\circ}22'40''$ West 868.64 feet;
Thence North $16^{\circ}02'21''$ West 1,001.63 feet;
Thence North $15^{\circ}43'23''$ West 808.63 feet;
Thence North $14^{\circ}29'42''$ West 215.30 feet;
Thence North $02^{\circ}51'21''$ West 51.77 feet;
Thence North $37^{\circ}59'19''$ East 51.77 feet;
Thence North $58^{\circ}24'39''$ East 660.90 feet;
Thence North $56^{\circ}56'25''$ East 865.77 feet;
Thence North $62^{\circ}27'21''$ East 303.89 feet;
Thence North $58^{\circ}11'43''$ East 148.88 feet;
Thence North $66^{\circ}27'20''$ East 99.67 feet;

Thence North 79°59'44" East 60.67 feet;
Thence North 18°39'40" East 212.96 feet;
Thence North 13°26'09" East 80.67 feet;
Thence North 04°05'14" East 65.75 feet;
Thence North 00°47'28" East 593.12 feet;
Thence North 05°29'40" East 61.18 feet;
Thence North 20°17'22" East 57.43 feet;
Thence North 51°55'17" East 55.07 feet;
Thence South 84°48'27" East 51.76 feet;
Thence South 67°53'53" East 40.46 feet;
Thence South 53°37'33" East 55.29 feet;
Thence South 55°37'37" East 158.19 feet;
Thence South 66°28'32" East 79.22 feet;
Thence South 81°19'48" East 69.92 feet;
Thence North 80°53'08" East 96.10 feet;
Thence North 83°09'35" East 88.49 feet;
Thence South 75°58'08" East 57.96 feet;
Thence South 45°44'09" East 65.43 feet;
Thence South 23°12'23" East 107.03 feet;
Thence South 31°09'29" East 124.53 feet;
Thence South 36°28'03" East 195.13 feet;
Thence South 41°49'01" East 193.27 feet;
Thence South 41°27'57" East 187.53 feet;
Thence South 50°06'28" East 177.12 feet;
Thence North 86°06'03" East 103.33 feet;
Thence North 82°07'11" East 76.87 feet;
Thence North 58°49'02" East 61.16 feet;
Thence North 41°11'10" East 266.09 feet;
Thence North 43°45'15" East 203.61 feet;
Thence North 63°26'06" East 230.87 feet;
Thence North 55°12'54" East 17.74 feet;
Thence North 06°58'17" West 40.07 feet;
Thence North 60°20'46" East 94.06 feet;
Thence North 14°42'46" East 42.02 feet;
Thence North 52°22'08" East 29.10 feet;
Thence North 05°13'18" East 37.01 feet;
Thence North 07°13'16" West 185.10 feet;
Thence North 08°55'50" West 66.36 feet;
Thence North 08°35'26" West 70.11 feet;
Thence North 03°30'28" East 24.24 feet;
Thence North 09°22'28" East 32.62 feet;
Thence North 32°03'11" East 61.35 feet;
Thence North 41°59'52" East 54.16 feet;
Thence North 46°38'59" East 44.15 feet;
Thence North 40°19'34" East 80.40 feet;
Thence North 39°30'46" East 42.43 feet;
Thence North 52°07'39" East 71.16 feet;
Thence North 60°17'11" East 55.95 feet;
Thence North 68°43'34" East 63.02 feet;
Thence North 86°12'19" East 41.51 feet;
Thence South 75°32'58" East 74.98 feet;
Thence North 78°55'50" East 42.97 feet;
Thence North 69°31'07" East 36.80 feet;

Thence North 75°37'20" East 34.34 feet;
Thence South 72°08'39" East 57.43 feet;
Thence South 56°52'50" East 70.22 feet;
Thence South 56°52'18" East 99.31 feet;
Thence South 70°35'59" East 56.76 feet;
Thence South 85°12'15" East 70.23 feet;
Thence North 85°47'37" East 52.90 feet;
Thence North 77°16'18" East 51.33 feet;
Thence North 64°20'23" East 9.49 feet;
Thence North 23°58'25" East 60.47 feet;
Thence North 39°27'42" East 136.06 feet;
Thence North 18°12'03" East 123.70 feet;
Thence North 16°26'30" West 137.54 feet;
Thence North 45°55'34" West 133.51 feet;
Thence North 84°43'21" West 101.26 feet;
Thence South 87°06'53" West 375.05 feet;
Thence South 86°31'55" West 296.36 feet;
Thence North 02°29'11" West 25.06 feet;
Thence South 85°19'00" West 63.79 feet;
Thence South 87°01'35" West 57.73 feet;
Thence North 85°14'11" West 27.05 feet;
Thence North 86°11'09" West 22.51 feet;
Thence North 71°01'47" West 25.34 feet;
Thence North 74°57'44" West 25.97 feet;
Thence North 80°42'24" West 41.73 feet;
Thence North 77°00'19" West 49.95 feet;
Thence North 78°26'56" West 104.70 feet;
Thence North 78°45'16" West 195.82 feet;
Thence North 79°21'51" West 81.14 feet;
Thence North 76°30'15" West 38.50 feet;
Thence North 70°33'36" West 13.50 feet;
Thence North 53°58'21" West 10.18 feet;
Thence North 53°58'22" West 10.18 feet;
Thence North 43°09'08" West 16.42 feet;
Thence North 34°52'31" West 30.12 feet;
Thence North 37°08'48" West 31.00 feet;
Thence North 45°00'00" West 37.06 feet;
Thence North 43°28'45" West 29.92 feet;
Thence North 52°29'45" West 40.59 feet;
Thence North 53°28'16" West 25.16 feet;
Thence North 69°51'49" West 23.93 feet;
Thence North 72°53'50" West 40.74 feet;
Thence North 74°38'02" West 101.72 feet;
Thence North 76°25'14" West 79.73 feet;
Thence North 73°50'34" West 83.41 feet;
Thence North 77°16'32" West 71.39 feet;
Thence North 89°42'58" West 0.16 feet;
Thence North 70°38'50" West 32.47 feet;
Thence North 75°44'50" West 240.26 feet;
Thence South 76°22'29" West 54.20 feet;
Thence North 75°46'41" West 12.81 feet;
Thence North 78°06'45" West 243.02 feet;
Thence South 87°32'28" West 438.43 feet;

Thence South 86°36'21" West 1,109.58 feet;
Thence North 77°00'11" West 142.86 feet;
Thence South 17°30'03" West 10.94 feet;
Thence South 21°30'05" East 36.63 feet;
Thence South 30°57'50" West 6.02 feet;
Thence North 73°10'43" West 139.18 feet;
Thence North 11°46'06" West 25.32 feet;
Thence North 05°42'38" West 20.76 feet;
Thence North 04°23'55" West 13.47 feet;
Thence North 50°11'40" West 8.07 feet;
Thence North 83°59'28" West 19.73 feet;
Thence North 84°57'27" West 35.25 feet;
Thence North 83°49'48" West 38.44 feet;
Thence North 80°44'23" West 96.27 feet;
Thence North 79°48'04" West 449.12 feet;
Thence North 77°49'57" West 284.20 feet;
Thence North 83°39'35" West 93.52 feet;
Thence North 87°39'46" West 101.30 feet;
Thence North 84°25'40" West 85.09 feet;
Thence North 77°28'16" West 95.22 feet;
Thence North 77°23'45" West 170.38 feet;
Thence North 75°57'50" West 76.65 feet;
Thence North 69°26'38" West 35.30 feet;
Thence North 69°46'31" West 41.82 feet;
Thence North 48°48'50" West 43.91 feet;
Thence North 46°14'43" West 134.40 feet;
Thence North 43°58'24" West 611.34 feet;
Thence North 45°00'00" West 338.85 feet;
Thence North 44°41'45" West 412.62 feet;
Thence North 43°26'06" West 267.38 feet;
Thence North 46°27'29" West 200.89 feet;
Thence North 66°02'14" East 12.72 feet;
Thence North 81°52'12" East 18.83 feet;
Thence North 03°20'45" East 73.83 feet;
Thence South 85°25'42" West 6.48 feet;
Thence North 90°00'00" West 10.84 feet;
Thence South 70°27'48" West 16.99 feet;
Thence South 56°18'36" West 14.89 feet;
Thence South 75°57'49" West 17.03 feet;
Thence South 87°16'25" West 10.86 feet;
Thence North 59°20'58" West 16.21 feet;
Thence North 35°32'16" West 17.77 feet;
Thence North 26°33'54" West 17.32 feet;
Thence North 16°11'21" West 16.67 feet;
Thence North 01°52'04" West 47.53 feet;
Thence North 00°05'16" West 336.69 feet;
Thence North 00°29'38" West 299.52 feet;
Thence North 00°56'29" West 220.01 feet;
Thence North 00°52'19" East 237.57 feet;
Thence North 00°46'52" West 113.62 feet;
Thence North 00°00'00" East 13.43 feet;
Thence North 14°02'10" East 8.52 feet;
Thence North 45°00'00" East 5.84 feet;

Thence North 71°33'54" East 9.80 feet;
Thence North 82°24'19" East 15.63 feet;
Thence South 89°12'02" East 222.07 feet;
Thence South 86°36'31" East 69.83 feet;
Thence South 82°38'52" East 32.28 feet;
Thence South 70°49'16" East 25.15 feet;
Thence South 60°38'32" East 18.96 feet;
Thence South 62°44'41" East 38.34 feet;
Thence South 73°08'30" East 35.61 feet;
Thence South 87°42'34" East 25.84 feet;
Thence North 86°18'31" East 32.08 feet;
Thence North 74°58'54" East 43.84 feet;
Thence North 66°16'18" East 51.33 feet;
Thence North 56°01'25" East 57.29 feet;
Thence North 52°34'43" East 171.66 feet;
Thence North 43°53'54" East 75.96 feet;
Thence North 36°37'17" East 47.61 feet;
Thence North 35°48'12" East 77.68 feet;
Thence North 30°21'29" East 83.78 feet;
Thence North 22°37'12" East 67.13 feet;
Thence North 13°36'02" East 32.94 feet;
Thence North 14°28'13" East 66.13 feet;
Thence North 10°57'15" East 65.22 feet;
Thence North 11°18'36" East 21.06 feet;
Thence North 16°41'58" East 10.78 feet;
Thence North 45°00'00" East 10.22 feet;
Thence North 58°23'33" East 15.76 feet;
Thence North 64°39'14" East 21.71 feet;
Thence North 67°47'47" East 163.98 feet;
Thence North 64°59'39" East 161.25 feet;
Thence North 66°22'14" East 18.04 feet;
Thence North 72°53'50" East 28.10 feet;
Thence North 90°00'00" East 14.46 feet;
Thence North 88°18'55" East 35.13 feet;
Thence South 88°36'10" East 42.36 feet;
Thence North 90°00'00" East 28.92 feet;
Thence South 82°45'47" East 16.40 feet;
Thence South 61°55'39" East 17.73 feet;
Thence North 69°34'35" East 118.02 feet;
Thence North 81°56'55" East 17.06 feet;
Thence North 86°43'15" East 124.39 feet;
Thence North 13°46'19" West 328.58 feet;
Thence North 70°48'07" East 76.21 feet;
Thence North 54°29'06" East 37.97 feet;
Thence North 21°53'45" West 54.48 feet;
Thence North 70°47'14" East 77.55 feet;
Thence North 71°02'31" East 35.61 feet;
Thence North 72°16'21" East 131.70 feet;
Thence North 72°04'43" East 126.98 feet;
Thence North 73°13'18" East 106.86 feet;
Thence North 71°11'17" East 74.14 feet;
Thence North 68°33'08" East 30.93 feet;
Thence North 71°33'54" East 17.88 feet;

Thence North $81^{\circ}15'14''$ East 13.52 feet;
Thence South $83^{\circ}05'20''$ East 17.09 feet;
Thence South $47^{\circ}43'35''$ East 15.29 feet;
Thence South $37^{\circ}20'58''$ East 24.58 feet;
Thence South $16^{\circ}38'20''$ East 46.68 feet;
Thence South $24^{\circ}10'17''$ East 35.78 feet;
Thence South $21^{\circ}52'45''$ East 70.36 feet;
Thence South $34^{\circ}33'45''$ East 28.09 feet;
Thence South $47^{\circ}26'12''$ East 34.20 feet;
Thence South $52^{\circ}25'53''$ East 8.43 feet;
Thence South $71^{\circ}33'54''$ East 9.75 feet;
Thence South $85^{\circ}01'49''$ East 11.87 feet;
Thence South $87^{\circ}08'15''$ East 20.59 feet;
Thence South $88^{\circ}25'50''$ East 37.54 feet;
Thence North $87^{\circ}33'48''$ East 48.37 feet;
Thence South $89^{\circ}35'00''$ East 141.38 feet;
Thence North $89^{\circ}06'34''$ East 99.23 feet;
Thence North $84^{\circ}31'51''$ East 48.55 feet;
Thence North $82^{\circ}20'00''$ East 26.97 feet;
Thence North $79^{\circ}46'40''$ East 31.87 feet;
Thence North $76^{\circ}27'51''$ East 28.56 feet;
Thence North $70^{\circ}23'45''$ East 39.84 feet;
Thence North $70^{\circ}48'11''$ East 134.46 feet;
Thence North $70^{\circ}37'19''$ East 79.02 feet;
Thence North $66^{\circ}32'28''$ East 29.70 feet;
Thence North $57^{\circ}49'44''$ East 37.66 feet;
Thence North $53^{\circ}21'57''$ East 74.96 feet;
Thence North $54^{\circ}24'59''$ East 148.87 feet;
Thence North $50^{\circ}50'35''$ East 203.54 feet;
Thence North $48^{\circ}43'53''$ East 33.52 feet;
Thence North $32^{\circ}23'52''$ East 31.67 feet;
Thence 334.86 feet along the arc of a non-tangential circular curve concave West having a radius of 272.48 feet through a central angle of $70^{\circ}24'48''$ and being subtended by a chord which bears North $06^{\circ}25'03''$ West 314.18 feet;
Thence North $41^{\circ}37'27''$ West 133.18 feet;
Thence 184.60 feet along the arc of a circular curve concave Southwest having a radius of 573.36 feet through a central angle of $18^{\circ}26'50''$ and being subtended by a chord which bears North $50^{\circ}50'52''$ West 183.80 feet;
Thence North $60^{\circ}04'16''$ West 149.32 feet;
Thence 44.34 feet along the arc of a non-tangential circular curve concave East having a radius of 29.99 feet through a central angle of $84^{\circ}41'37''$ and being subtended by a chord which bears North $17^{\circ}43'30''$ West 40.41 feet;
Thence North $24^{\circ}37'19''$ East 671.62 feet;
Thence North $23^{\circ}58'37''$ East 211.35 feet;
Thence North $27^{\circ}45'05''$ East 100.63 feet;
Thence North $34^{\circ}51'48''$ East 129.90 feet;
Thence North $36^{\circ}14'23''$ East 119.58 feet;
Thence North $39^{\circ}15'14''$ East 61.92 feet;
Thence North $30^{\circ}37'48''$ East 96.80 feet;
Thence North $31^{\circ}09'42''$ East 136.09 feet;
Thence North $31^{\circ}57'25''$ East 103.02 feet;
Thence North $32^{\circ}39'03''$ East 134.08 feet;
Thence North $28^{\circ}32'24''$ East 53.34 feet;

Thence North 31°15'49" East 35.90 feet;
Thence North 36°52'12" East 24.66 feet;
Thence North 53°49'13" East 22.74 feet;
Thence North 59°30'01" East 46.43 feet;
Thence North 58°16'35" East 70.87 feet;
Thence North 46°49'06" East 48.85 feet;
Thence North 34°36'20" East 66.58 feet;
Thence North 36°23'58" East 266.89 feet;
Thence North 35°28'00" East 51.47 feet;
Thence North 24°13'40" East 48.08 feet;
Thence North 20°29'50" East 62.60 feet;
Thence North 17°32'36" East 44.54 feet;
Thence North 11°02'07" East 134.56 feet;
Thence North 09°20'41" East 65.81 feet;
Thence North 08°49'13" East 32.16 feet;
Thence North 02°07'16" West 14.81 feet;
Thence North 19°58'59" West 12.83 feet;
Thence North 29°55'53" West 20.87 feet;
Thence North 45°00'00" West 56.96 feet;
Thence North 48°51'56" West 57.48 feet;
Thence North 42°38'48" West 28.31 feet;
Thence North 38°47'48" West 35.86 feet;
Thence North 43°25'04" West 39.03 feet;
Thence North 36°22'11" East 30.93 feet;
Thence North 23°54'19" East 139.67 feet;
Thence South 66°53'26" East 241.46 feet;
Thence South 64°45'28" East 263.29 feet;
Thence South 71°18'47" East 57.07 feet;
Thence South 85°07'33" East 50.51 feet;
Thence North 81°05'07" East 75.18 feet;
Thence North 81°43'21" East 63.88 feet;
Thence North 84°57'08" East 36.24 feet;
Thence South 86°25'39" East 63.61 feet;
Thence South 81°31'21" East 262.28 feet;
Thence South 88°08'03" East 273.99 feet;
Thence North 80°58'13" East 327.79 feet;
Thence North 67°50'56" East 252.22 feet;
Thence North 81°02'01" East 819.65 feet;
Thence North 81°42'41" East 310.84 feet;
Thence South 65°34'43" East 80.72 feet;
Thence North 89°59'47" East 219.16 feet;
Thence North 82°42'28" East 41.19 feet;
Thence North 58°02'38" East 138.72 feet;
Thence North 41°09'18" East 91.38 feet;
Thence North 73°57'36" East 83.05 feet;
Thence North 84°51'58" East 305.34 feet;
Thence North 86°38'43" East 343.90 feet;
Thence North 87°28'42" East 503.72 feet;
Thence North 88°46'01" East 328.07 feet;
Thence North 37°30'20" East 357.69 feet;
Thence North 15°32'08" East 149.51 feet;
Thence North 86°55'36" East 261.44 feet;
Thence North 72°53'31" East 576.59 feet;

Thence North 50°45'14" East 202.55 feet;
Thence North 87°14'14" East 314.60 feet;
Thence South 76°38'32" East 143.08 feet;
Thence North 89°49'43" East 1,054.71 feet;
Thence South 75°20'32" East 42.85 feet;
Thence South 41°43'41" East 38.04 feet;
Thence South 59°44'48" East 101.86 feet;
Thence South 82°56'38" East 71.89 feet;
Thence North 76°31'27" East 68.87 feet;
Thence North 60°32'45" East 175.39 feet;
Thence North 78°18'10" East 41.23 feet;
Thence North 89°28'30" East 480.22 feet;
Thence North 82°52'57" East 82.50 feet;
Thence North 59°26'48" East 47.53 feet;
Thence North 77°36'27" East 12.36 feet;
Thence South 70°55'29" East 16.45 feet;
Thence South 47°41'12" East 748.88 feet;
Thence South 34°06'49" East 46.63 feet;
Thence South 14°16'24" East 615.15 feet;
Thence North 85°59'44" East 160.53 feet;
Thence North 47°06'44" East 110.60 feet;
Thence North 29°11'18" East 460.96 feet;
Thence North 13°56'57" East 67.16 feet;
Thence South 51°56'23" East 650.95 feet;
Thence South 00°14'33" East 1,537.82 feet;
Thence South 00°22'10" East 2,347.87 feet;
Thence North 89°29'01" East 210.00 feet;
Thence South 00°22'10" East 200.00 feet;
Thence South 89°29'01" West 210.00 feet;
Thence South 00°22'10" East 62.31 feet;
Thence South 00°30'10" East 2,674.23 feet;
Thence South 00°35'31" East 2,684.53 feet;
Thence South 00°38'11" East 2,610.24 feet;
Thence South 00°30'34" East 199.67 feet;
Thence 227.68 feet along the arc of a circular curve concave East having a radius of 3,032.95 feet through a central angle of 04°18'04" and being subtended by a chord which bears South 02°39'36" East 227.63 feet;
Thence South 04°48'38" East 400.93 feet;
Thence South 05°08'04" East 83.53 feet;
Thence South 00°29'16" East 87.64 feet; Thence continue along said line South 00°29'16" East 1,584.56 feet;
Thence South 89°04'49" West 604.79 feet;
Thence North 47°03'54" West 98.67 feet;
Thence South 52°55'08" West 87.29 feet;
Thence South 06°39'26" West 102.55 feet;
Thence South 71°24'17" West 367.36 feet;
Thence North 19°54'41" West 104.73 feet;
Thence North 43°05'38" West 251.09 feet;
Thence North 11°04'29" East 79.58 feet;
Thence North 05°51'31" West 66.56 feet;
Thence North 48°52'26" West 332.24 feet;
Thence North 74°56'35" West 80.29 feet;
Thence South 74°58'06" West 235.65 feet;



Thence South 51°40'42" West 93.09 feet;
Thence South 21°53'05" West 241.50 feet;
Thence South 77°21'09" West 341.17 feet;
Thence South 60°48'05" West 79.49 feet;
Thence North 88°09'54" West 265.68 feet;
Thence South 89°36'53" West 1,150.41 feet;
Thence South 00°23'11" East 619.66 feet;
Thence South 89°36'49" West 912.92 feet;
Thence South 00°38'46" East 2,985.82 feet;
Thence 224.04 feet along the arc of a non-tangential circular curve concave West having a radius of 2,721.25 feet through a central angle of 04°43'02" and being subtended by a chord which bears South 01°44'02" West 223.98 feet;
Thence South 04°05'59" West 217.57 feet;
Thence 153.40 feet along the arc of a non-tangential circular curve concave East having a radius of 2,277.17 feet through a central angle of 03°51'35" and being subtended by a chord which bears South 02°10'28" West 153.37 feet;
Thence South 06°34'56" East 1,089.87 feet;
Thence South 88°54'44" West 247.15 feet to the POINT OF BEGINNING.

Containing 5,026.94 acres, more or less.

Subject to easements and restrictions of record.

Bearings are based on the South line of Section 16, Township 48 South, Range 29 East, Collier County, Florida, being South 88°54'34" West.

Certificate of authorization #LB-7866

Stantec Consulting Services, Inc.

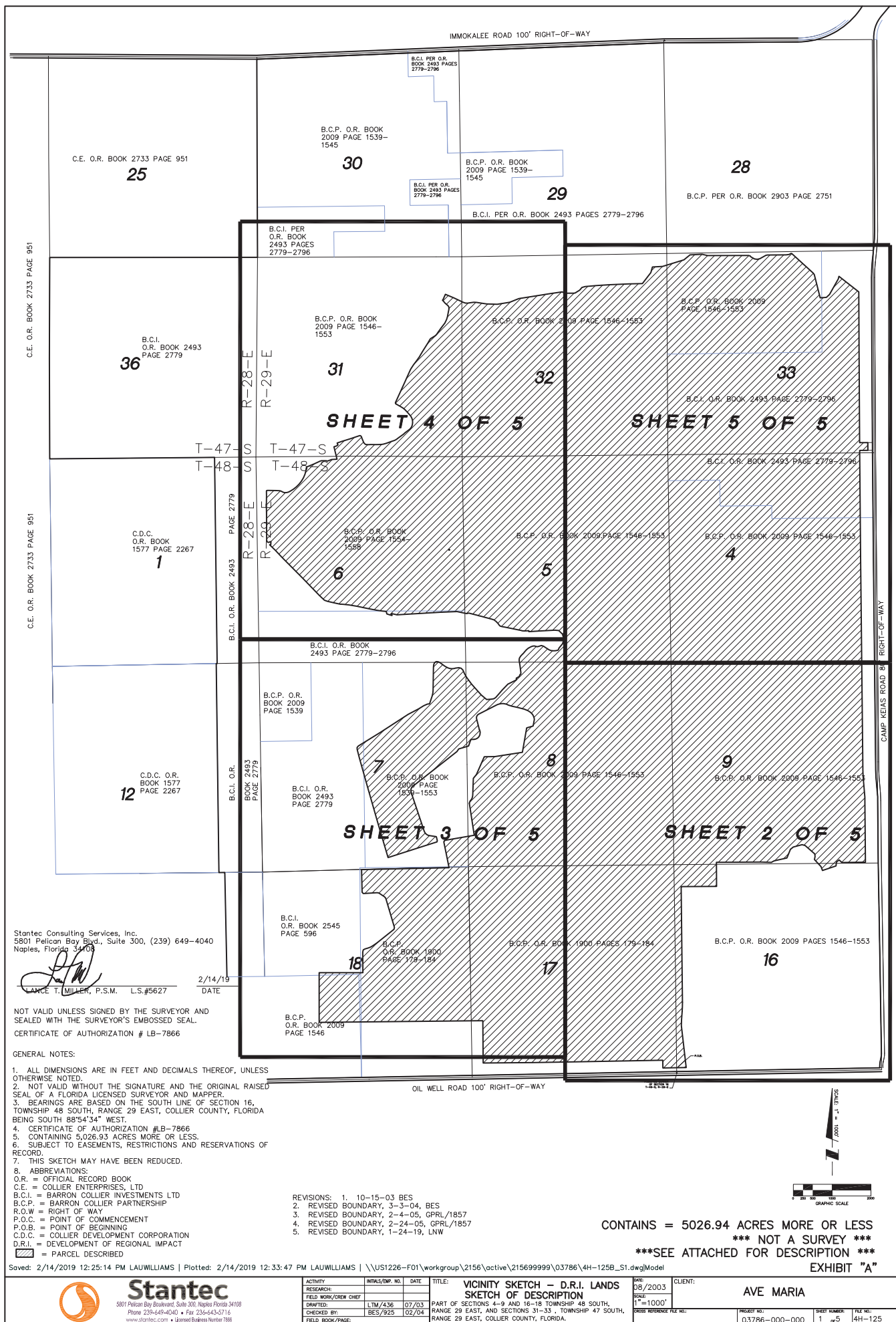
Registered Engineers and Land Surveyors

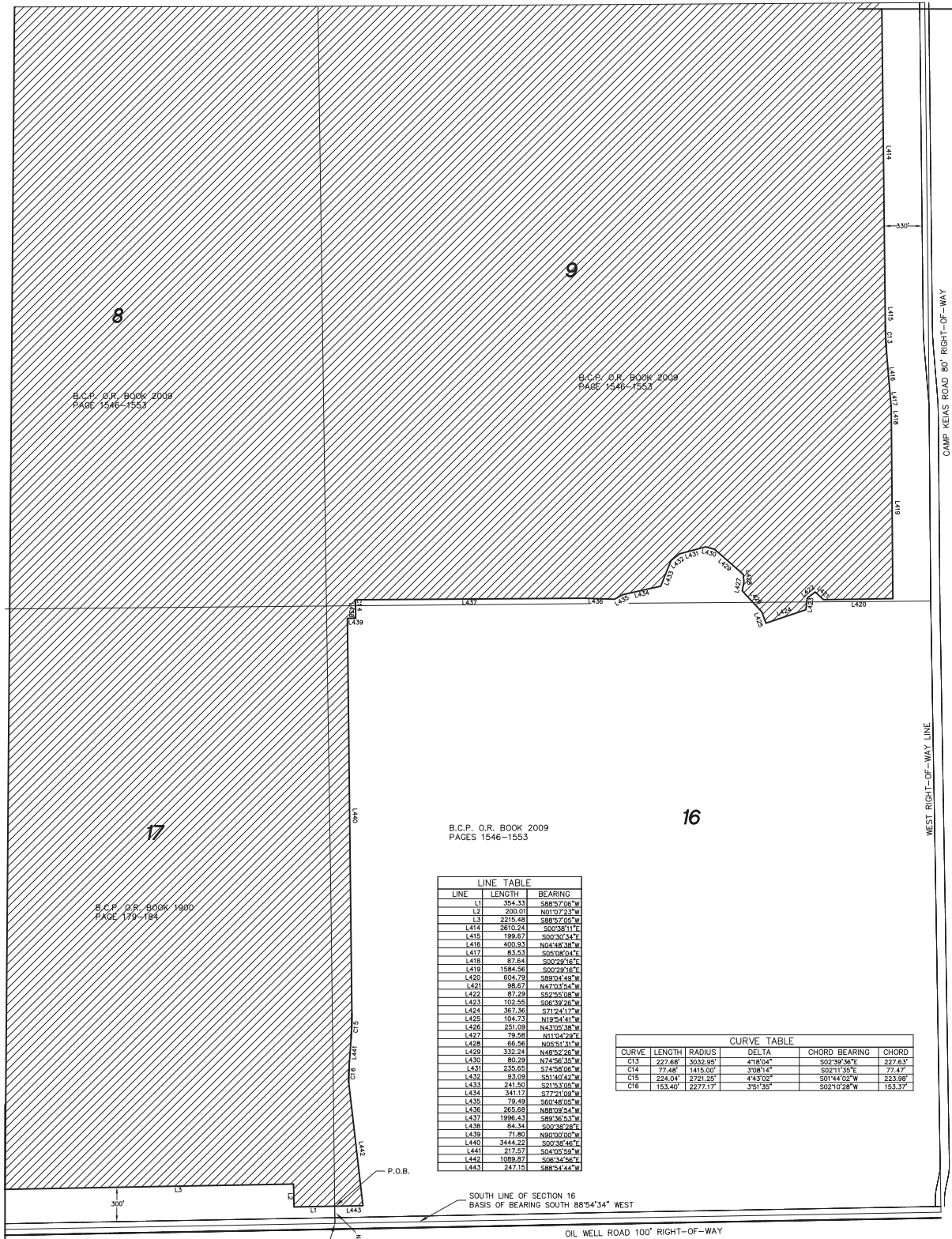
A handwritten signature in black ink, appearing to read 'Lance T Miller', written over a horizontal line.

By: _____ October 18, 2018
Lance T Miller, Professional Surveyor and Mapper #LS5627

Not valid unless embossed with the Professional's seal.

Ref. 4H-125B





LINE TABLE		
LINE	LENGTH	BEARING
L1	354.33	S88°57'06"W
L2	200.00	N01°07'37"W
L3	2215.48	S88°57'09"W
L4	2810.24	S00°36'11"E
L415	199.97	S00°30'34"E
L416	400.93	N04°48'38"W
L417	83.53	S05°08'04"E
L418	87.84	S00°23'16"E
L419	1584.56	S00°23'16"E
L420	604.75	S89°04'49"W
L421	88.67	N47°03'54"W
L422	87.29	S52°55'08"W
L423	102.55	S06°39'26"W
L424	367.36	S71°24'17"W
L425	104.73	N19°54'41"W
L426	251.09	N43°02'36"W
L427	79.59	N11°04'29"E
L428	66.56	N05°31'31"W
L429	332.24	N46°52'26"W
L430	80.29	N74°56'35"W
L431	235.65	S74°56'09"W
L432	93.09	S21°40'42"W
L433	241.50	S21°33'05"W
L434	341.17	S77°21'09"W
L435	79.49	S60°48'00"W
L436	265.68	N88°02'54"W
L437	1996.43	S89°36'33"W
L438	84.34	S00°38'26"E
L439	71.80	N90°00'00"W
L440	3444.22	S00°38'46"E
L441	217.57	S04°05'50"W
L442	1089.87	S06°34'56"E
L443	247.15	S88°54'44"W

CURVE TABLE					
CURVE	LENGTH	RADIUS	DELTA	CHORD BEARING	CHORD
C13	227.68	3032.95	47°04'	S02°39'50"E	227.63
C14	77.48	1415.00	308°14'	S69°11'35"E	77.47
C15	224.04	2721.49	44°30'	S01°44'02"W	223.98
C16	153.40	2277.77	3°51'35"	S02°10'28"W	153.37

GENERAL NOTES:

1. ALL DIMENSIONS ARE IN FEET AND DECIMALS THEREOF, UNLESS OTHERWISE NOTED.
2. NOT VALID WITHOUT THE SIGNATURE AND THE ORIGINAL RAISED SEAL OF A FLORIDA LICENSED SURVEYOR AND MAPPER.
3. BEARINGS ARE BASED ON THE SOUTH LINE OF SECTION 16, TOWNSHIP 48 SOUTH, RANGE 29 EAST, COLLIER COUNTY, FLORIDA BEING SOUTH 88°54'34" WEST.
4. CERTIFICATE OF AUTHORIZATION #LB-43
5. CONTAINING 5,026.93 ACRES MORE OR LESS.
6. SUBJECT TO EASEMENTS, RESTRICTIONS AND RESERVATIONS OF RECORD.
7. THIS SKETCH MAY HAVE BEEN REDUCED.

8. ABBREVIATIONS:
 O.R. = OFFICIAL RECORD BOOK
 C.E. = COLLIER ENTERPRISES, LTD
 B.C.I. = BARRON COLLIER INVESTMENTS LTD
 B.C.P. = BARRON COLLIER PARTNERSHIP
 R.O.W. = RIGHT OF WAY
 P.O.C. = POINT OF COMMENCEMENT
 P.O.B. = POINT OF BEGINNING
 C.D.C. = COLLIER DEVELOPMENT CORPORATION
 D.R.I. = DEVELOPMENT OF REGIONAL IMPACT
 [Hatched Box] = PARCEL DESCRIBED

FOR SIGNATURE AND SEAL, SEE SHEET 1 OF 5.

NOT VALID UNLESS SIGNED BY THE SURVEYOR AND SEALED WITH THE SURVEYOR'S EMBOSSED SEAL.
 CERTIFICATE OF AUTHORIZATION # LB-7866

REVISIONS:

1. 10-15-03, BES
2. REVISED BOUNDARY, 3-3-04, BES
3. REVISED BOUNDARY, 2-4-05, GPR/L/1857
4. REVISED BOUNDARY, 2-24-05, GPR/L/1857
5. REVISED BOUNDARY, 1-24-19, LNW

CONTAINS = 5026.94 ACRES MORE OR LESS

*** NOT A SURVEY ***

SEE ATTACHED FOR DESCRIPTION

EXHIBIT "A"

Saved: 1/24/2019 3:23:30 PM LAUWILLIAMS | Plotted: 2/14/2019 12:24:39 PM LAUWILLIAMS | \\US1226-F01\workgroup\2156\active\215699999\03786\4H-125B_S2.dwg\Model



Stantec
 5801 Pelican Bay Boulevard, Suite 300, Naples, Florida 34108
 Phone 239-649-4040 • Fax 239-643-5716
 www.stantec.com • Licensed Business Number 7866

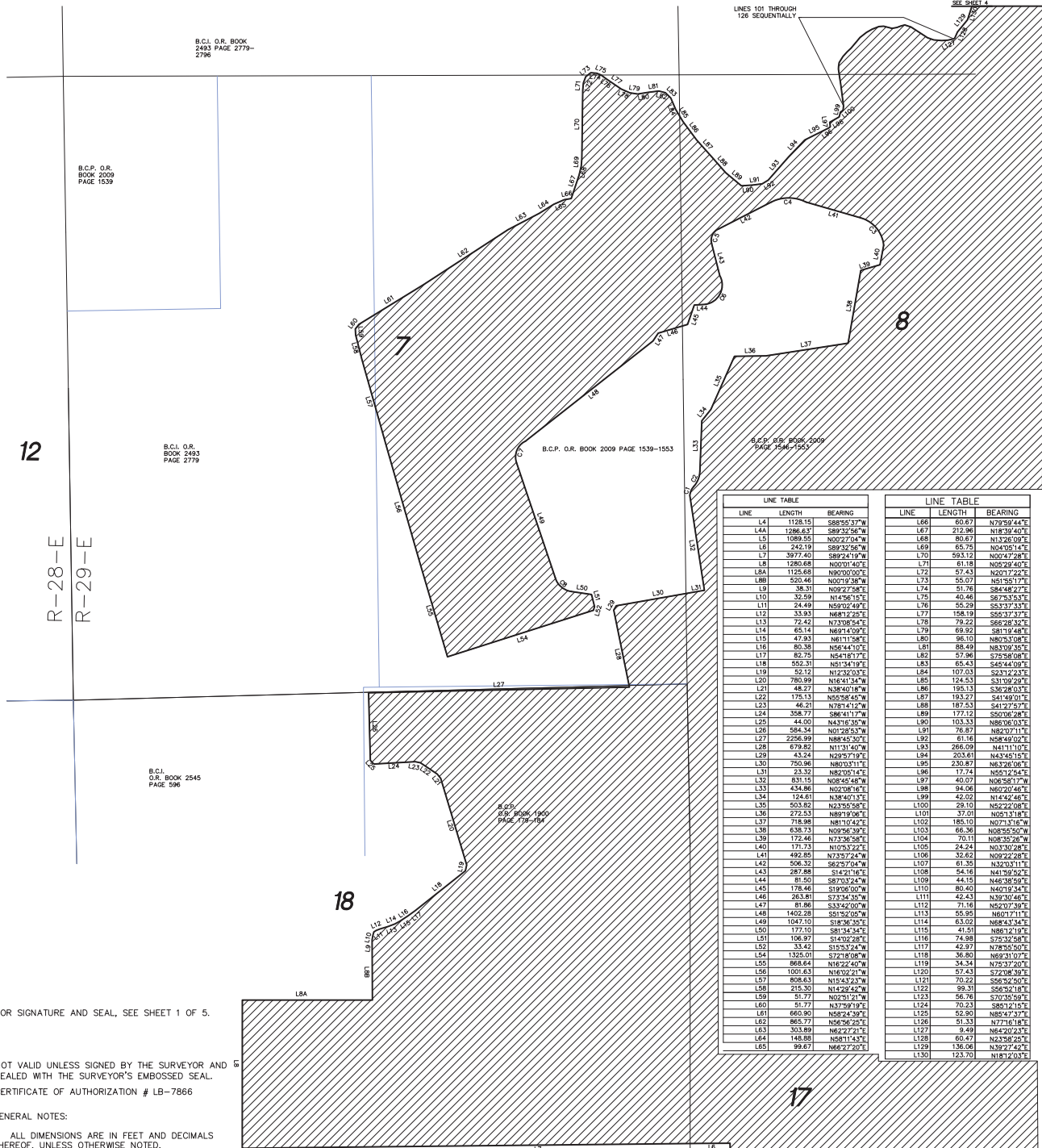
ACTIVITY	INITIALS/EMP. NO.	DATE
RESEARCH:		
FIELD WORK/FOREMAN:		
DRAWN:	LTM/436	07/03
CHECKED BY:	BES/925	02/04
FIELD BOOK/PAGE:		

TITLE: **DETAIL SHEET - DRI LANDS SECTION OF DESCRIPTION**
 PART OF SECTIONS 4-9 AND 16-18 TOWNSHIP 48 SOUTH, RANGE 29 EAST, AND SECTIONS 31-33, TOWNSHIP 47 SOUTH, RANGE 29 EAST, COLLIER COUNTY, FLORIDA.

DATE	CUSTOMER:	PROJECT NO.	SHEET NUMBER	FILE NO.
08/2003	AVE MARIA	03786-000-000	2 of 5	4H-125B

6

5



CURVE	LENGTH	RADIUS	DELTA	CHORD	BEARING	CHORD
C1	82.76	128.95	36°33'11"	N43°30'21"E	81.34'	
C2	149.95	215.80	39°48'43"	N22°02'37"E	146.95'	
C3	327.51	275.44	68°07'37"	N39°53'35"W	308.56'	
C4	313.21	331.23	54°38'52"	N80°00'00"W	301.71'	
C5	155.39	107.24	83°01'31"	S27°09'30"W	142.15'	
C6	341.14	168.89	115°44'01"	S29°11'23"W	286.03'	
C7	219.21	155.90	82°34'07"	S22°30'26"W	200.48'	
C8	196.86	170.73	68°04'00"	S48°32'34"E	186.14'	

- REVISIONS:
- 10-15-03, BES
 - REVISED BOUNDARY, 3-3-04, BES
 - REVISED BOUNDARY, 2-4-05, GPRL/1857
 - REVISED BOUNDARY, 2-24-05, GPRL/1857
 - REVISED BOUNDARY, 1-24-19, LNW



Saved: 1/24/2019 3:23:35 PM LAUWILLIAMS | Plotted: 2/14/2019 12:24:18 PM LAUWILLIAMS | \\US1226-F01\workgroup\2156\active\215699999\03786\4H-125B_S3.dwgModel



Stantec
5801 Pelican Bay Boulevard, Suite 300, Naples, Florida 34108
Phone 239-449-4040 • Fax 239-443-5716
www.stantec.com • United Business Number 7888

ACTIVITY: RESEARCH
FIELD WORK/CREW CHIEF
DATE: 08/03
LTM/436
BES/925
02/04
FIELD BOOK/PAGE:

TITLE: DETAIL SHEET - DRI LANDS
SKETCH OF DESCRIPTION
PART OF SECTIONS 4-9 AND 16-18 TOWNSHIP 48 SOUTH,
RANGE 29 EAST, AND SECTIONS 31-33, TOWNSHIP 47 SOUTH,
RANGE 29 EAST, COLLIER COUNTY, FLORIDA.

DATE: 08/2003
CLIENT: AVE MARIA
SCALE: 1"=400'
PROJECT NO.: 03786-000-000
SHEET NUMBER: 3 of 5
FILE NO.: 4H-125

B.C.I. PER O.R. BOOK
2483 PAGES 2779-2796

B.C.I. PER O.R. BOOK 2483 PAGES 2779-2796

B.C.P. O.R. BOOK
2009 PAGE 1546-1553

B.C.P. O.R. BOOK 2009 PAGES 1546-1553

36

R-28-E
R-29-E

31

CURVE TABLE					
CURVE	LENGTH	RADIUS	DELTA	CHORD BEARING	CHORD
C9	334.867	272.44"	70°24'48"	N06°50'52"W	514.15'
C10	184.60	573.36"	18°26'50"	N50°50'52"W	183.80'
C11	44.34	29.99'	84°1'37"	N17°43'30"W	40.41'

T-47-S
T-48-S

LINE 228 THROUGH 235 SEQUENTIALLY

LINE 221 THROUGH 225 SEQUENTIALLY

LINE 205 THROUGH 215 SEQUENTIALLY

LINE 195 THROUGH 205 SEQUENTIALLY

LINE 185 THROUGH 195 SEQUENTIALLY

LINE 175 THROUGH 185 SEQUENTIALLY

LINE 165 THROUGH 175 SEQUENTIALLY

LINE 155 THROUGH 165 SEQUENTIALLY

LINE 145 THROUGH 155 SEQUENTIALLY

LINE 135 THROUGH 145 SEQUENTIALLY

LINE 125 THROUGH 135 SEQUENTIALLY

LINE 115 THROUGH 125 SEQUENTIALLY

LINE 105 THROUGH 115 SEQUENTIALLY

LINE 95 THROUGH 105 SEQUENTIALLY

LINE 85 THROUGH 95 SEQUENTIALLY

LINE 75 THROUGH 85 SEQUENTIALLY

LINE	LENGTH	BEARING
L131	137.54	N16°26'30"W
L132	133.50	N45°00'34"W
L133	101.26	N84°53'21"W
L134	375.05	S87°06'53"W
L135	206.36	S88°01'50"W
L136	25.06	N02°29'11"W
L137	63.79	S88°19'00"W
L138	57.73	S87°01'35"W
L139	27.05	N88°14'11"W
L140	22.51	N88°11'09"W
L141	25.34	N70°10'47"W
L142	25.97	N74°07'44"W
L143	41.73	N88°42'24"W
L144	49.95	N77°02'01"W
L145	104.70	N78°26'56"W
L146	106.81	N78°45'16"W
L147	81.14	N79°21'51"W
L148	38.50	N76°30'15"W
L149	13.50	N70°33'45"W
L150	10.18	N53°58'21"W
L151	10.18	N53°58'22"W
L152	16.42	N43°30'06"W
L153	30.12	N34°52'31"W
L154	31.00	N37°05'48"W
L155	37.06	N45°00'00"W
L156	29.92	N43°28'45"W
L157	40.99	N52°29'45"W
L158	25.16	N43°08'04"W
L159	23.93	N69°51'49"W
L160	44.94	N72°53'00"W
L161	101.72	N74°38'00"W
L162	79.73	N76°25'14"W
L163	63.41	N77°16'52"W
L164	71.39	N77°16'52"W
L165	32.62	N70°44'10"W

LINE	LENGTH	BEARING
L166	240.26	N78°44'50"W
L167	54.20	S78°22'20"W
L168	12.81	N75°46'41"W
L169	243.02	N78°06'48"W
L170	438.43	S87°32'28"W
L171	1109.58	S86°36'21"W
L172	142.86	N77°00'11"W
L173	10.94	S77°30'00"W
L174	36.63	S21°30'00"E
L175	6.02	S30°37'50"W
L176	139.18	N72°10'43"W
L177	25.32	N11°46'06"W
L178	20.76	N05°42'38"W
L179	13.47	N04°24'00"W
L180	8.07	N50°11'40"W
L181	19.73	N81°59'28"W
L182	35.25	N84°57'27"W
L183	38.44	N84°49'48"W
L184	86.27	N80°44'23"W
L185	443.12	N79°48'04"W
L186	284.20	N77°49'57"W
L187	93.52	N82°39'35"W
L188	101.30	N87°39'46"W
L189	85.09	N84°25'40"W
L190	95.22	N77°28'16"W
L191	170.58	N77°33'45"W
L192	76.65	N75°37'50"W
L193	35.30	N69°28'38"W
L194	41.82	N69°46'31"W
L195	43.91	N48°48'50"W
L196	134.40	N46°14'43"W
L197	611.34	N43°58'24"W
L198	338.85	N43°30'00"W
L199	472.62	N44°41'45"W
L200	267.38	N43°26'06"W

LINE	LENGTH	BEARING
L201	200.89	N48°27'29"W
L202	12.17	N60°00'14"E
L203	18.63	N81°52'12"E
L204	73.83	N03°20'45"E
L205	6.48	S85°25'42"W
L206	10.84	N80°00'00"W
L207	16.99	S70°27'48"W
L208	14.89	S56°16'36"W
L209	17.03	S75°57'49"W
L210	10.86	S87°16'25"W
L211	16.21	N09°07'04"W
L212	17.77	N30°32'16"W
L213	17.32	N28°33'54"W
L214	16.87	N10°11'21"W
L215	47.53	N01°52'04"W
L216	336.69	N00°00'00"W
L217	299.52	N00°00'00"W
L218	220.01	N00°00'00"W
L219	237.57	N00°00'00"W
L220	113.52	N00°46'52"W
L221	13.43	N00°00'00"E
L222	8.52	N14°02'00"E
L223	5.84	N45°00'00"E
L224	8.80	N71°33'24"E
L225	15.63	N82°24'00"E
L226	222.07	S89°12'00"E
L227	69.83	S86°36'31"E
L228	32.28	S82°38'37"E
L229	25.15	S70°49'16"E
L230	18.96	S60°28'30"E
L231	38.34	S60°44'11"E
L232	35.61	S73°08'30"E
L233	25.84	S87°42'34"E
L234	32.08	N88°10'31"E
L235	43.84	N74°58'54"E
L236	51.33	N88°16'16"E
L237	57.29	N58°01'25"E
L238	171.66	N52°34'43"E
L239	75.96	N43°33'55"E
L240	47.81	N30°37'17"E
L241	77.68	N35°48'12"E
L242	83.18	N30°21'28"E
L243	67.13	N22°37'12"E
L244	66.13	N14°28'11"E
L245	65.22	N10°57'14"E
L246	21.06	N11°18'36"E
L247	10.78	N10°13'56"E
L248	10.22	N45°00'00"E
L249	10.22	N45°00'00"E
L250	15.76	N58°23'33"E
L251	21.71	N64°30'14"E
L252	163.98	N67°47'47"E
L253	161.25	N64°59'39"E
L254	18.04	N68°22'11"E
L255	28.10	N72°53'50"E
L256	14.46	N80°00'00"E
L257	35.13	N88°18'51"E
L258	42.36	S88°36'10"E
L259	28.92	N80°00'00"E
L260	18.40	S82°45'15"E
L261	17.73	S81°55'30"E
L262	118.02	N69°24'55"E
L263	17.06	N10°56'02"E
L264	124.39	N80°43'11"E
L265	328.56	N13°46'11"W
L266	76.21	N10°48'00"E
L267	37.97	N54°28'00"E
L268	54.46	N23°34'45"W
L269	77.55	N70°47'14"E

LINE	LENGTH	BEARING
L271	35.61	N71°02'31"E
L272	131.70	N72°16'21"E
L273	128.96	N72°04'43"E
L274	106.86	N73°13'00"E
L275	74.14	N71°11'17"E
L276	30.93	N68°33'08"E
L277	17.88	N71°33'54"E
L278	13.52	N81°10'14"E
L279	17.09	S83°05'20"E
L280	15.29	S47°43'30"E
L281	24.58	S37°20'08"E
L282	46.68	S16°36'20"E
L283	35.78	S24°10'17"E
L284	70.36	S21°52'45"E
L285	28.09	S46°34'45"E
L286	34.20	S47°26'12"E
L287	8.43	S52°25'53"E
L288	9.75	S71°33'18"E
L289	11.87	S85°01'49"E
L290	20.59	S97°08'15"E
L291	37.54	S89°25'50"E
L292	48.37	N87°53'48"E
L293	141.38	S89°35'00"E
L294	99.23	N89°06'34"E
L295	48.55	N84°31'51"E
L296	26.97	N82°20'00"E
L297	31.87	N79°46'40"E
L298	28.56	N76°27'51"E
L299	39.84	N70°23'45"E
L300	134.46	N70°48'11"E
L301	79.02	N70°37'19"E
L302	29.70	N66°32'28"E
L303	37.66	N57°48'44"E
L304	74.96	N53°21'07"E
L305	148.87	N54°24'56"E
L306	203.54	N50°20'35"E
L307	33.52	N48°43'53"E
L308	31.67	N32°33'52"E
L309	133.18	N41°37'27"E
L310	149.32	N60°04'16"W
L311	67.62	N54°37'00"E
L312	211.35	N42°58'37"E
L313	105.63	N27°45'00"E
L314	129.90	N34°51'40"E
L315	119.58	N30°14'23"E
L316	61.92	N30°15'14"E
L317	96.80	N30°37'40"E
L318	136.09	N31°09'42"E
L319	103.02	N31°57'22"E
L320	134.08	N32°49'03"E
L321	53.34	N28°32'24"E
L322	35.90	N31°15'49"E
L323	24.68	N36°52'12"E
L324	22.74	N53°49'13"E
L325	70.77	N58°16'35"E
L326	22.70	N58°16'35"E
L327	68.45	N46°49'08"E
L328	46.43	N58°00'00"E
L329	46.43	N58°00'00"E
L330	266.89	N36°25'58"E
L331	51.47	N35°28'00"E
L332	48.08	N33°43'40"E
L333	62.60	N20°29'50"E
L334	44.54	N17°33'36"E
L335	134.56	N11°02'07"E
L336	65.81	N09°20'21"E
L337	32.16	N08°49'13"E
L338	14.61	N07°07'16"E
L339	12.83	N19°58'59"E
L340	20.87	N25°55'53"E
L341	56.96	N45°00'00"W
L342	57.48	N48°51'56"W
L343	26.31	N42°38'48"W
L344	35.86	N38°47'48"W
L345	39.03	N43°25'04"W
L346	30.43	N33°54'19"W
L347	139.67	N26°22'11"E
L348	241.46	S66°53'28"E
L349	263.29	S64°45'08"E
L350	57.07	S71°18'47"E
L351	50.51	S85°07'33"E
L352	72.18	N81°05'07"E
L353	63.88	N81°43'13"E
L354	36.24	N84°57'08"E
L355	63.61	S86°25'30"E
L356	262.28	S81°31'21"E
L357	273.99	S88°08'03"E
L358	327.79	N88°28'13"E
L359	252.22	N87°50'56"E
L360	819.65	N81°02'01"E
L361	310.84	N81°42'41"E
L362	80.72	S65°34'43"E

GENERAL NOTES:
1. ALL DIMENSIONS ARE IN FEET AND DECIMALS THEREOF, UNLESS OTHERWISE NOTED.
2. NOT VALID WITHOUT THE SIGNATURE AND THE ORIGINAL RAISED SEAL OF A FLORIDA LICENSED SURVEYOR AND MAPPER.
3. BEARINGS ARE BASED ON THE SOUTH LINE OF SECTION 16, TOWNSHIP 48 SOUTH, RANGE 29 EAST, COLLIER COUNTY, FLORIDA BEING SOUTH 88°54'34" WEST.
4. CERTIFICATE OF AUTHORIZATION #LB-43
5. CONTAINING 5,026.93 ACRES MORE OR LESS.
6. SUBJECT TO EASEMENTS, RESTRICTIONS AND RESERVATIONS OF RECORD.
7. THIS SKETCH MAY HAVE BEEN REDUCED.
8. ABBREVIATIONS:
O.R. = OFFICIAL RECORD BOOK
C.E. = COLLIER ENTERPRISES, LTD
B.C.I. = BARRON COLLIER INVESTMENTS LTD
B.C.P. = BARRON COLLIER PARTNERSHIP
P.O.W. = POINT OF WAY
P.O.C. = POINT OF COMMENCEMENT
P.O.B. = POINT OF BEGINNING
C.D.C. = COLLIER DEVELOPMENT CORPORATION
D.R.I. = DEVELOPMENT OF REGIONAL IMPACT
2222 = PARCEL DESCRIBED

FOR SIGNATURE AND SEAL, SEE SHEET 1 OF 5.

NOT VALID UNLESS SIGNED BY THE SURVEYOR AND SEALED WITH THE SURVEYOR'S EMBOSSED SEAL.
CERTIFICATE OF AUTHORIZATION # LB-7866

- REVISED: 1. 10-15-03, BES
2. REVISED BOUNDARY, 3-3-04, BES
3. REVISED BOUNDARY, 2-4-05, GPRL/1857
4. REVISED BOUNDARY, 2-24-05, GPRL/1857
5. REVISED BOUNDARY, 1-24-19, LNW

Saved: 1/24/2019 3:23:38 PM LAUWILLIAMS | Plotted: 2/14/2019 12:23:46 PM LAUWILLIAMS | \\US1226-F01\workgroup\2156\active\215699999\03786\4H-125B_S4.dwg\Model



Stantec
5001 Pelican Bay Boulevard, Suite 300, Naples Florida 34108
Phone 239-449-0400 • Fax 239-443-5716
www.stantec.com • United Business Number 7985

ACTIVITY	RESEARCH	INTL/IMP. NO.	DATE
FIELD WORK/CHIEF			
DRAFTED:	LTM/436	08/03	
CHECKED BY:	BES/925	02/04	
FIELD WORK/PAGE:			

TITLE: DETAIL SHEET - DRI LANDS
SKETCH OF DESCRIPTION
PART OF SECTIONS 4-9 AND 16-18 TOWNSHIP 48 SOUTH,
RANGE 29 EAST, AND SECTIONS 31-33, TOWNSHIP 47 SOUTH,
RANGE 29 EAST, COLLIER COUNTY, FLORIDA.

CUSTOMER:	28/2003
SCALE:	1"=400'
DRAWING REFERENCE FILE NO.:	03786-000-000
SHEET NUMBER:	4 of 5
TITLE NO.:	4H-125B

CONTAINS = 5026.94 ACRES MORE OR LESS
*** NOT A SURVEY ***
SEE ATTACHED FOR DESCRIPTION
EXHIBIT "A"



SHEET NUMBER:		FILE NO.:	
5	of 5	4H-125B	