

**SKETCH OF DESCRIPTION OF
PORTIONS OF TRACTS A AND B, COURTHOUSE SHADOWS,
& PORTIONS LYING IN SECTIONS 11, 12 & 13, TOWNSHIP 50 SOUTH, RANGE
25 EAST, COLLIER COUNTY, FLORIDA**

LEGAL DESCRIPTION (PARCEL 8)

A PORTION OF TRACTS A AND B, COURTHOUSE SHADOWS, ACCORDING TO THE PLAT THEREOF AS RECORDED IN PLAT BOOK 29, PAGE 40, OF THE PUBLIC RECORDS OF COLLIER COUNTY, FLORIDA. BEING IN SECTIONS 11, 12 AND 13, TOWNSHIP 50 SOUTH, RANGE 25 EAST, COLLIER COUNTY, FLORIDA, AND BEING MORE PARTICULARLY DESCRIBED AS FOLLOWS:

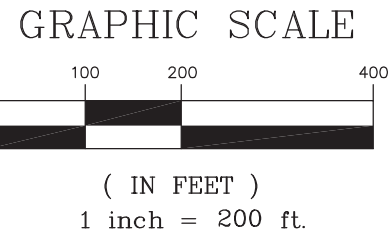
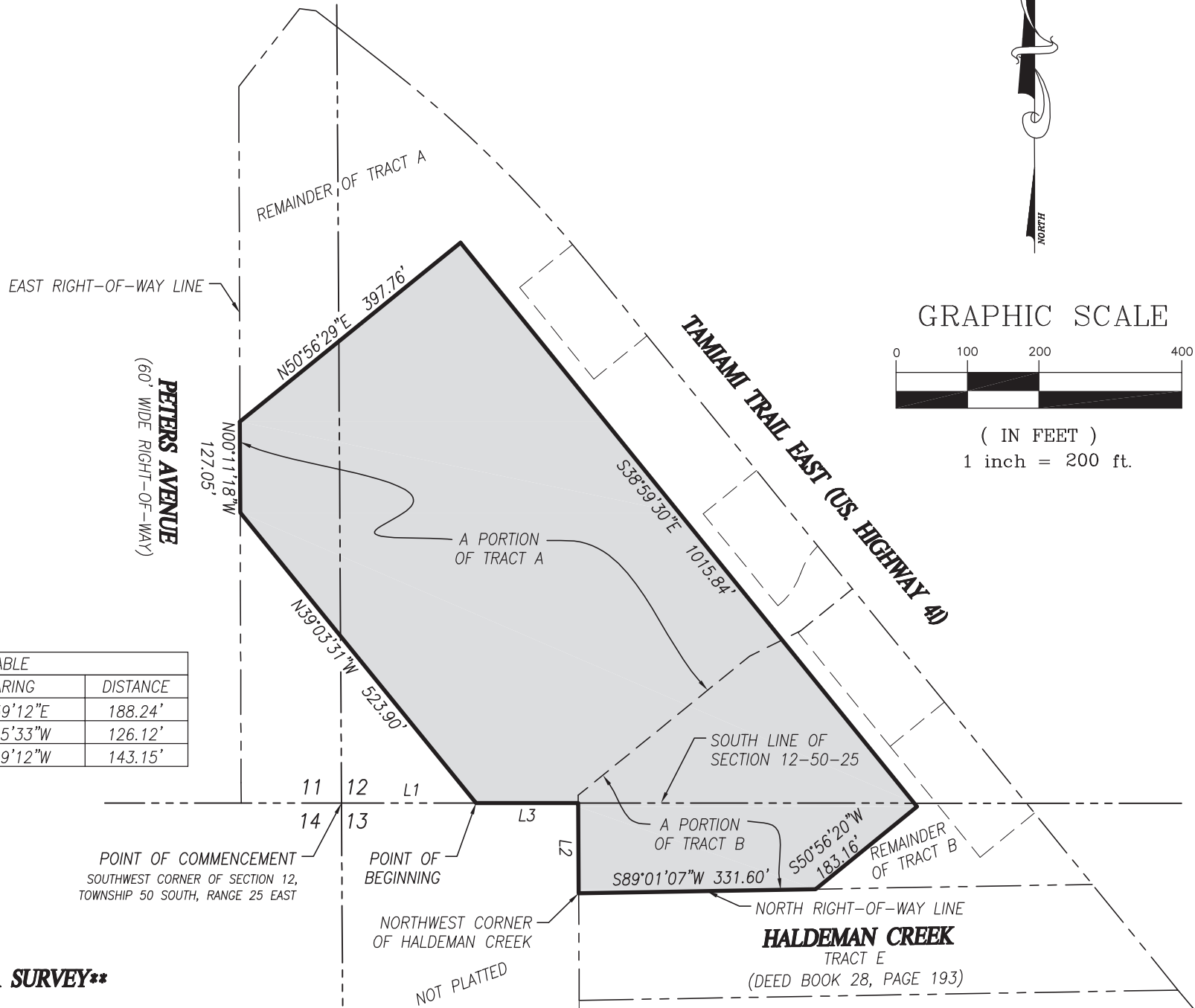
COMMENCING AT THE SOUTHWEST CORNER OF SECTION 12. TOWNSHIP 50 SOUTH, RANGE 25 EAST, COLLIER COUNTY, FLORIDA; THENCE S.89°59'12"E. ALONG THE SOUTH LINE OF SAID SECTION 12, A DISTANCE OF 188.24 FEET TO THE POINT OF BEGINNING; THENCE DEPARTING SAID SECTION LINE, N.89°03'31"W. A DISTANCE OF 523.90 FEET TO THE EAST RIGHT-OF-WAY LINE OF PETERS AVENUE; THENCE N.00°11'18"W, ALONG SAID RIGHT-OF-WAY LINE, A DISTANCE OF 127.05 FEET; THENCE DEPARTING SAID RIGHT-OF-WAY LINE, N.50°56'29"E. A DISTANCE OF 397.76 FEET; THENCE S.38°59'30"E, A DISTANCE OF 1015.84 FEET; THENCE S.50°56'20"W. A DISTANCE OF 183.16 FEET TO THE NORTH RIGHT-OF-WAY LINE OF HALDEMAN CREEK (DEED BOOK 28, PAGE 193); THENCE S.89°01'07"W. ALONG SAID RIGHT-OF-WAY LINE, A DISTANCE OF 331.60 FEET TO THE NORTHWEST CORNER OF SAID HALDEMAN CREEK; THENCE DEPARTING SAID RIGHT-OF-WAY LINE, N.00°15'33"W, A DISTANCE OF 126.12 FEET TO THE SOUTH LINE OF SAID SECTION 12; THENCE N.89°59'12"W. ALONG SAID SECTION LINE, A DISTANCE OF 143.15 FEET TO THE POINT OF BEGINNING.

CONTAINING 10.0 ACRES, MORE OR LESS.

THIS MAP PREPARED BY: CERTIFICATE OF AUTHORIZATION NO. LB 6086 DAVID S. DAGOSTINO ORIGINAL BASED SEAL OF A FLORIDA LICENSED SURVEYOR AND MAPPER	DAVID S. DAGOSTINO, PSM Professional Surveyor & Mapper Fla. License No. 5762	COMPUTER FILE: 18443_SKET0 DATE: 07/20/19	DRAWING SCALE: 1"=200' REVISION BY: REVISION DATE:	DRAWN BY: TMM CHECKED BY: N/A FIELD BOOK: N/A	CERTIFIED TO: FOR NO. 18-443 SHEET NO. 1 OF 2
-------------------------------------------------------------------------------------------------------------------------------------------------------------	---------------------------------------------------------------------------------	----------------------------------------------------	-------------------------------------------------------------	--------------------------------------------------------------	-----------------------------------------------------


DAGOSTINO & WOOD, INC.
 Professional Surveying & Mapping
 5415 Jaeger Road Suite A Naples, FL 34109
 Phone: (239) 352-6085 Website: www.dwsurveys.com

**SKETCH OF DESCRIPTION OF
PORTIONS OF TRACTS A AND B, COURTHOUSE SHADOWS,
& PORTIONS LYING IN SECTIONS 11, 12 & 13, TOWNSHIP 50 SOUTH, RANGE
25 EAST, COLLIER COUNTY, FLORIDA**



LINE TABLE		
LINE	BEARING	DISTANCE
L1	S89°59'12"E	188.24'
L2	N00°15'33"W	126.12'
L3	N89°59'12"W	143.15'

****THIS IS NOT A SURVEY****

DRAWN BY: TM CHECKED BY: N/A FIELD BOOK: N/A	CERTIFIED TO:
DRAWING SCALE: 1"=200' REVISION BY: REVISION DATE:	PROJECT NO.: 18-443 SHEET NO.: 2 OF 2
COUNTY FILE: 18443 SKETCH SURVEY DATE: DRAWING DATE: 07/20/19	THIS MAP PREPARED BY: CERTIFICATE OF AUTHORIZATION NO. LB 1688 ORIGINAL BASED SEAL OF A FLORIDA LICENSED SURVEYOR AND MAPPER
DAVID S. DAGOSTINO, PSM Professional Surveyor & Mapper License No. 5762	D&W DAGOSTINO & WOOD, INC. Professional Surveying & Mapping 5415 Jaeger Road Suite A Naples, FL 34109 Phone: (239) 352-6085 Website: www.dwsurveys.com