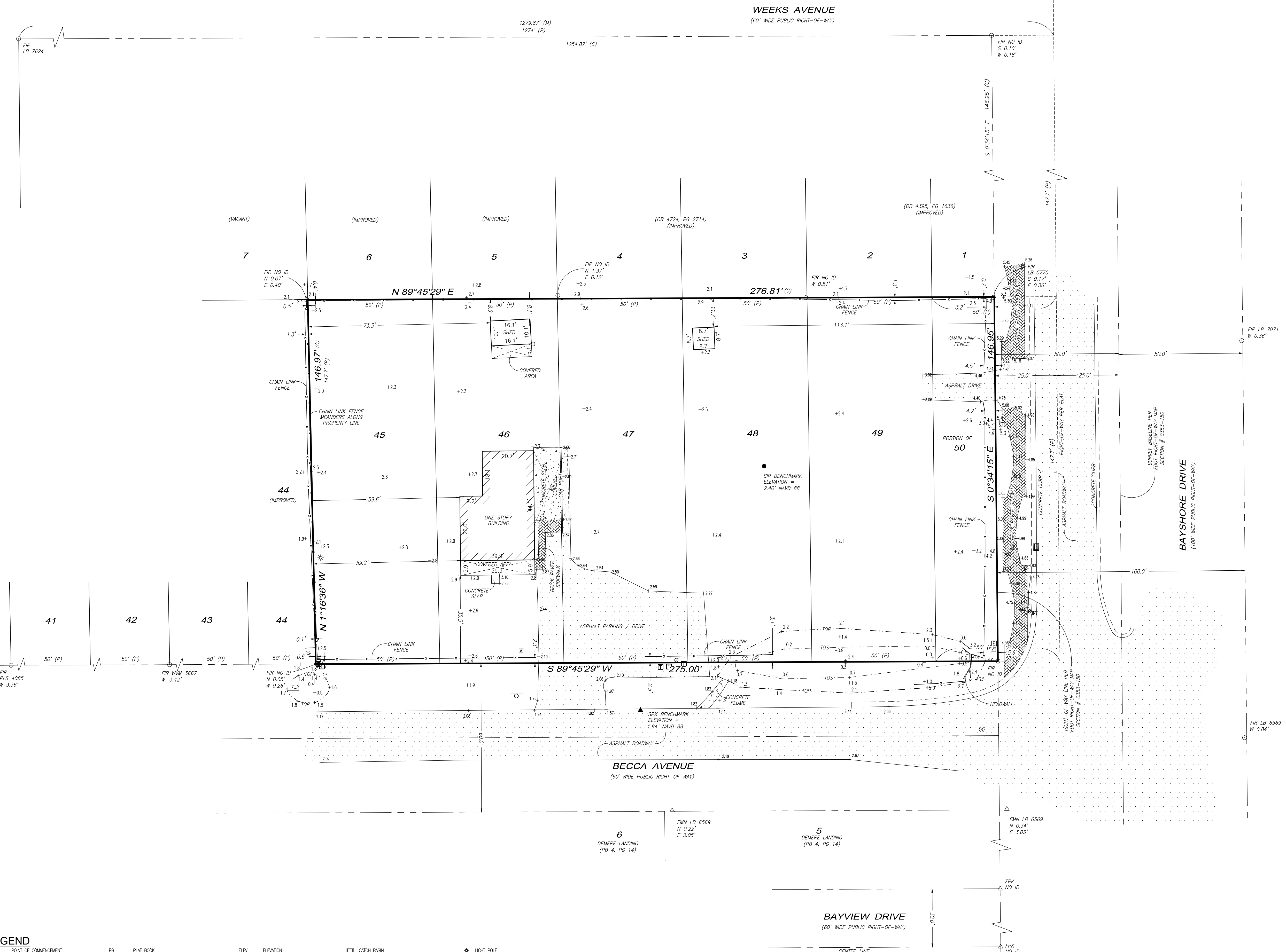


0 10' 20' 40'
 SCALE: 1" = 20'
 THIS PLAN MAY HAVE BEEN ENLARGED OR
 REDUCED FROM INTENDED DISPLAY SCALE
 FOR REPRODUCTION REASONS



PROPERTY DESCRIPTION
 (PER OFFICIAL RECORDS BOOK 5437, PAGE 305)
 LOTS 45, 46, 47, 48, 49, AND 50, REBECCA WEEKS SUBDIVISION, ACCORDING TO
 THE MAP OR PLAT THEREOF AS RECORDED IN PLAT BOOK 2, PAGE 81, PUBLIC
 RECORDS OF COLLIER COUNTY, FLORIDA.
 CONTAINING 0.93 ACRES, MORE OR LESS.

- NOTES:**
1. BEARINGS SHOWN HEREON ARE BASED ON THE STATE PLANE COORDINATE SYSTEM ESTABLISHED BY THE NATIONAL GEODETIC SURVEY FOR FLORIDA EAST ZONE, 1983 DATUM WITH 1990 ADJUSTMENT OBTAINED UTILIZING RTK GPS OBSERVATIONS ON THE FOOT NETWORK AND REFER TO THE SOUTH LINE OF REBECCA WEEKS SUBDIVISION, PLAT BOOK 2, PAGE 81, PUBLIC RECORDS OF COLLIER COUNTY, FLORIDA AS BEING S 89°45'29" W.
 2. THIS SURVEY WAS PREPARED WITHOUT THE BENEFIT OF ABSTRACT OF TITLE AND MAY BE SUBJECT TO EASEMENTS, RESERVATIONS AND/OR RESTRICTIONS OF RECORD. ALL MATTERS OF TITLE SHOULD BE REFERRED TO AN ATTORNEY AT LAW.
 3. VERTICAL DATUM IS NAVD 1988; SOURCE BENCHMARK IS COLLIER COUNTY BENCHMARK TP 9 ELEVATION 5.65'.
 4. THIS PROPERTY IS LOCATED WITHIN FLOOD ZONE AE, HAVING A BASE FLOOD ELEVATION OF 7.0' (NAVD 88) PER THE FEDERAL EMERGENCY MANAGEMENT AGENCY FLOOD INSURANCE RATE MAP # 12021C 0394 H, DATED 5/16/2012.
 5. CERTAIN FEATURES REPRESENTED BY SYMBOLS MAY NOT BE SHOWN AT THEIR TRUE LOCATION AND/OR SCALE IN ORDER TO BE ABLE TO DEPICT THEM ON THIS MAP.
 6. DIMENSIONS SHOWN HEREON ARE IN U.S. SURVEY FEET AND DECIMALS THEREOF.
 7. THIS SURVEY DOES NOT ADDRESS ANY ENVIRONMENTAL CONCERNS, ENDANGERED WILDLIFE OR JURISDICTIONAL WETLANDS, IF ANY, EXCEPT AS SHOWN ON THIS SURVEY.
 8. THIS CERTIFICATION IS ONLY FOR THE LANDS DESCRIBED HEREON. IT IS NOT A CERTIFICATION OF TITLE, ZONING, SETBACKS, OR FREEDOM OF ENCUMBRANCES.
 9. THIS SURVEY IS NOT VALID WITHOUT THE DIGITAL SIGNATURE AND DIGITAL SEAL OF A LICENSED FLORIDA SURVEYOR AND MAPPER. NO ADDITIONS OR DELETIONS TO THIS SURVEY MAP ARE PERMITTED WITHOUT THE EXPRESSED WRITTEN CONSENT OF THE SIGNING PARTY.
 10. UNLESS OTHERWISE NOTED, BELOW GROUND UTILITIES AND FOUNDATIONS WERE NOT LOCATED FOR THE PURPOSES OF THIS SURVEY.
 11. BY SIGNING BELOW I CERTIFY THAT THIS SURVEY WAS MADE UNDER MY DIRECTION AND THAT IT MEETS THE STANDARDS OF PRACTICE SET FORTH BY THE BOARD OF PROFESSIONAL LAND SURVEYORS IN CHAPTER 5J-17.051, F.A.C., PURSUANT TO CHAPTER 472.027, FLORIDA STATUTES.
 12. THE PROPERTY BOUNDARY SHOWN HEREON WAS ESTABLISHED FROM A MIXTURE OF PLATTED DISTANCES AND BEST FIT LINES PER FIELD RECOVERED MONUMENTATION. AS SHOWN HEREON THE MONUMENTATION FOUND THROUGHOUT THE BLOCK DIFFERS GREATLY FROM THE PLATTED DIMENSIONS.
 13. DATE OF LAST FIELD WORK: 22_JUNE_2018.

LEGEND

PCB POINT OF COMMENCEMENT	PB PLAT BOOK	ELEV ELEVATION	☐ CATCH BASIN	☉ LIGHT POLE
POB POINT OF BEGINNING	PR OFFICIAL RECORDS BOOK	INV INVERT ELEVATION	☉ DRAINAGE MANHOLE	☉ TELEPHONE MANHOLE
FP FOUND IRON PIPE	FR FRAGS	RM RM ELEVATION	☉ METERED END	☉ TELEPHONE RESERVOIR
FR FOUND 5/8" IRON ROD	PS PROFESSIONAL SURVEYOR AND MAPPER	A/C AIR CONDITIONING UNIT/PAD	☉ WATER VALVE	☉ CABLE TELEVISION RISER/BOX
SR SET 5/8" IRON ROD w/CAP, L.B. #5151	LB LICENSED BUSINESS	CONC CONCRETE	☉ WATER METER	☉ ELECTRIC MANHOLE
FCM FOUND CONCRETE MONUMENT	SFC STATE PLANE COORDINATES	CM CORRUGATED METAL PIPE	☉ CORRUGATED PLASTIC PIPE	☉ ELECTRIC RISER/BOX/METER
SCM SET CONC. MONUMENT w/ALUMINUM DISK	ROW RIGHT-OF-WAY	CP CORRUGATED METAL PIPE	☉ RINFORCED CONCRETE PIPE	☉ ELECTRIC TRANSFORMER
FKK L.B. #5151	PUE PUBLIC UTILITY EASEMENT	CP CORRUGATED METAL PIPE	☉ CONCRETE HEADWALL	☉ TRAFFIC LIGHT
△ FOUND PARKER KALON NAIL	CUE COUNTY UTILITY EASEMENT	CP CORRUGATED METAL PIPE	☉ CONCRETE HEADWALL	☉ UNDERGROUND UTILITY MARKER
▲ SET PARKER KALON NAIL w/ALUMINUM DISK, L.B. #5151	UE UTILITY EASEMENT	CP CORRUGATED METAL PIPE	☉ CONCRETE HEADWALL	☉ SIGN ON POLE
○ FOUND DRILL HOLE	AE ACCESS EASEMENT	CP CORRUGATED METAL PIPE	☉ CONCRETE HEADWALL	☉ OAK TREE
● SET DRILL HOLE	DE DRAINAGE EASEMENT	CP CORRUGATED METAL PIPE	☉ CONCRETE HEADWALL	☉ PALM TREE
△ FOUND MAG NAIL	LME LAKE MAINTENANCE EASEMENT	CP CORRUGATED METAL PIPE	☉ CONCRETE HEADWALL	☉ PINE TREE
○ FOUND MAG NAIL	LSE LANDSCAPE BUFFER EASEMENT	CP CORRUGATED METAL PIPE	☉ CONCRETE HEADWALL	☉ 2" POLY TUBE STUB OUT
○ FOUND MAG NAIL	IRE IRRIGATION EASEMENT	CP CORRUGATED METAL PIPE	☉ CONCRETE HEADWALL	
(P) PLAT	FLR FLORIDA POWER AND LIGHT	CP CORRUGATED METAL PIPE	☉ CONCRETE HEADWALL	
(M) MEASURED	BSU BOXER SPRINGS UTILITY EASEMENT	CP CORRUGATED METAL PIPE	☉ CONCRETE HEADWALL	
(C) CALCULATED	NAV NORTH AMERICAN VERTICAL DATUM OF 1988	CP CORRUGATED METAL PIPE	☉ CONCRETE HEADWALL	
(D) DEED	NDVD NATIONAL GEODETIC VERTICAL DATUM OF 1929	CP CORRUGATED METAL PIPE	☉ CONCRETE HEADWALL	
		CP CORRUGATED METAL PIPE	☉ CONCRETE HEADWALL	

GradyMinor
 O. Grady Minor and Associates, P.A.
 3800 Via Del Rey
 Bonita Springs, Florida 34134

Civil Engineers • Land Surveyors • Planners • Landscape Architects
 Cert. of Auth. EB 0005151 Cert. of Auth. LB 0005151 Business LC 26000266
 Bonita Springs: 239.947.1144 www.GradyMinor.com Fort Myers: 239.690.4380

DRAWN BY: KJG	BOUNDARY SURVEY		DATE SIGNED
CHECKED BY: DLS			
JOB CODE: BSPARKLT	A PORTION OF LOTS 45 THROUGH 50 REBECCA WEEKS SUBDIVISION PLAT BOOK 2, PAGE 81		
SCALE: 1" = 20'	LYING IN SECTION 11, TOWNSHIP 50 SOUTH, RANGE 25 EAST COLLIER COUNTY, FLORIDA		
DATE: 6 SEPTEMBER 2018			
FILE: 18-86-BST-1.DWG			
SHEET: 1 of 1			

G:\SURVEY\PROJECT SURVEY 2018\18-86-BST-1.DWG