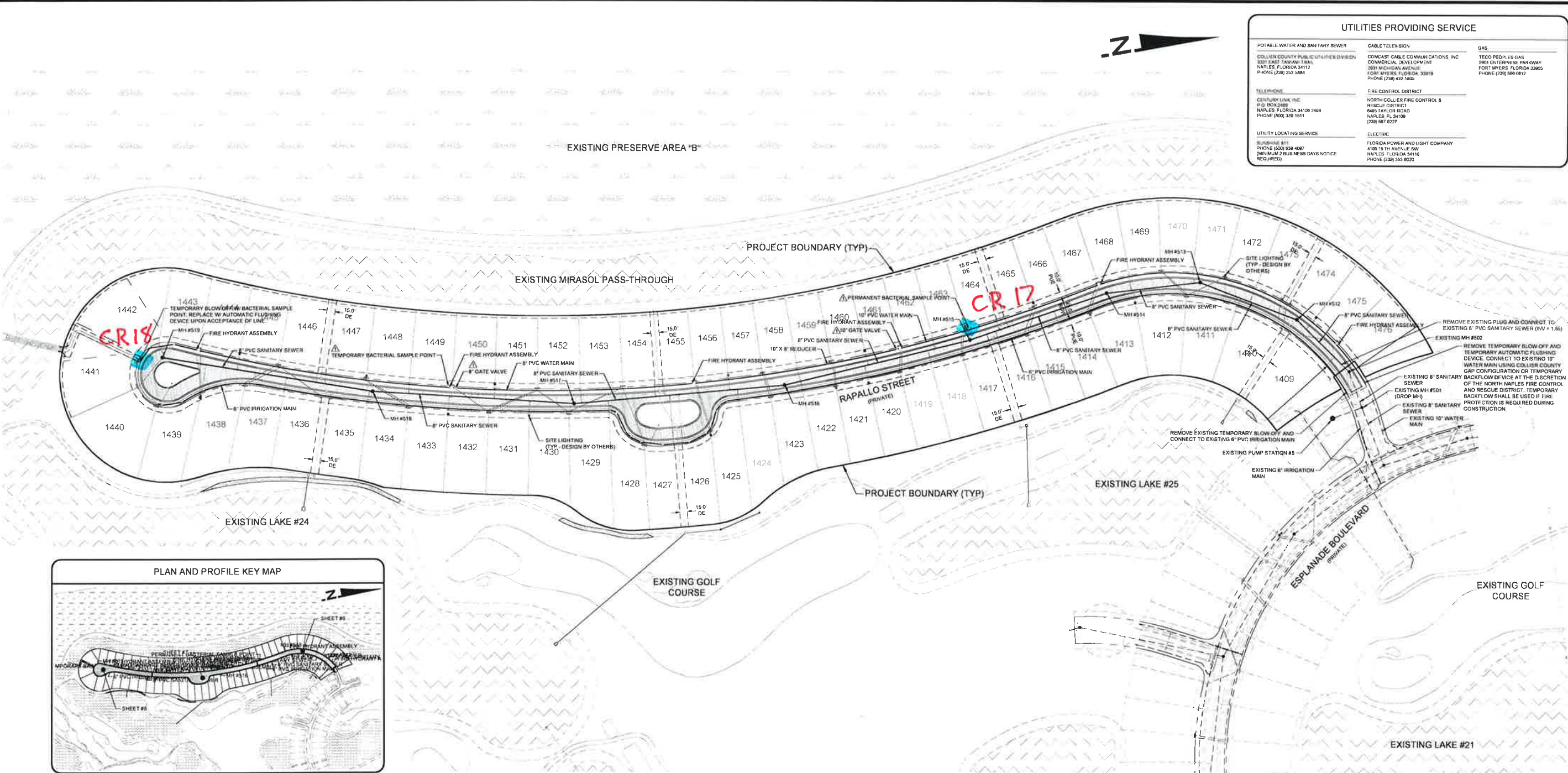


B:\p\m\27636 (Esplanade Naples) Phase 4\Drawings\Exhibit\27636-01 PP\Current Plans\276360104.dwg
1/24/2018 2:29:47 AM



PLAN AND PROFILE KEY MAP

WATER, IRRIGATION & SEWER NOTES

- CONTRACTOR TO VERIFY SIZE AND LOCATION OF EXISTING UTILITIES PRIOR TO COMMENCING CONSTRUCTION
- WATER AND SEWER UTILITIES SHALL BE CONSTRUCTED IN ACCORDANCE WITH THE COLLIER COUNTY UTILITY ORDINANCE 2004-31, AS AMENDED AND THE COLLIER COUNTY WATER-SEWER DISTRICT UTILITIES STANDARDS MANUAL AS AMENDED
- FITTINGS SHALL BE USED TO MAINTAIN PLAN ALIGNMENT OF ALL MAINS. DEVIATION FROM PLAN ALIGNMENT SHALL NOT BE MORE THAN 12" FROM PLAN CENTERLINE OF MAIN
- MINIMUM COVER FOR ALL UTILITIES SHALL BE MEASURED FROM FINISHED GRADES. IT IS THE RESPONSIBILITY OF THE CONTRACTOR TO INSURE MINIMUM COVER, REGARDLESS OF GRADE
- ALL POTABLE WATER MAINS SHALL BE SEPARATED FROM SANITARY SEWER AND STORM SEWER BY A MINIMUM HORIZONTAL DISTANCE OF TEN FEET (10') MEASURED EDGE TO EDGE AND A VERTICAL DISTANCE OF EIGHTEEN INCHES (18") MEASURED BETWEEN THE BOTTOM OF THE UPPER PIPE AND THE TOP OF THE LOWER PIPE. WHERE MINIMUM SEPARATION CANNOT BE MAINTAINED, SEE PIPE SEPARATION AND PIPE CONFLICT DETAIL REQUIREMENTS IN THE STANDARD DETAIL SHEETS
- ALL IRRIGATION MAINS SHALL BE SEPARATED FROM POTABLE WATER MAINS, WASTE WATER AND STORM WATER MANAGEMENT PIPES BY A MINIMUM HORIZONTAL DISTANCE OF FIVE FEET (5') MEASURED OUTSIDE OF PIPE TO OUTSIDE OF PIPE AND A MINIMUM VERTICAL DISTANCE OF EIGHTEEN INCHES (18") BETWEEN THE BOTTOM OF THE UPPER PIPE AND THE TOP OF THE LOWER PIPE. WHERE MINIMUM SEPARATION CANNOT BE MAINTAINED, SEE PIPE SEPARATION AND PIPE CONFLICT DETAIL REQUIREMENTS IN THE STANDARD DETAIL SHEETS
- ALL POTABLE WATER MAINS SHALL BE OWNED AND MAINTAINED BY COLLIER COUNTY UTILITIES
- ALL SANITARY SEWER LINES, LATERALS AND MANHOLES SHALL BE OWNED AND MAINTAINED BY COLLIER COUNTY UTILITIES
- CONTRACTOR SHALL CONSTRUCT ALL WATER AND SEWER APPURTENANCES INCLUDING SERVICE LEADS, METER BOXES, BLOW-OFFS, VALVE BOXES, AIR RELEASE VALVES, FIRE HYDRANTS, ETC. TO FINISHED GRADE. CONTRACTOR SHALL COORDINATE DURING THE CONSTRUCTION STAKEOUT AND PRIOR TO CONSTRUCTION OF SAID APPURTENANCES WITH OWNER AND ENGINEER REGARDING FINISHED GRADE. IT IS THE RESPONSIBILITY OF THE CONTRACTOR TO INSURE CONSTRUCTION OF SAID APPURTENANCES TO FINISHED GRADE
- ALL WATER & IRRIGATION SERVICES SHALL BE CONSTRUCTED WITH A CASING THAT EXTENDS 5 FEET BEYOND THE BACK OF CURB. MAGNETIC MARKERS ARE REQUIRED AT EACH END OF THE CASING. CASING SHALL BE 4" MINIMUM
- ALL PRESSURE MAINS SHALL BE AWWA C900, CLASS 150 PVC, UNLESS NOTED OTHERWISE. ALL WATER AND IRRIGATION MAINS UNDER PAVEMENT AND AT CONFLICT CROSSINGS SHALL BE AWWA C900, CLASS 200 PVC PIPE
- IRRIGATION DISTRIBUTION SYSTEM SHALL BE OWNED & MAINTAINED BY THE PROPERTY OWNER
- THE WATER METER SHALL BE SIZED BY THE ENGINEER OF RECORD APPROVED BY COLLIER COUNTY PUBLIC UTILITIES. WATER METERS 2" AND SMALLER SHALL BE INSTALLED BY PUBLIC UTILITIES. WATER METERS 3" AND LARGER SHALL BE INSTALLED BY THE CONTRACTOR
- SANITARY SEWER MAINS AND LATERALS SHALL BE ASTM D 3034 SDR 26. PRESSURE MAINS SHALL BE AWWA C900, CLASS 150 PVC, UNLESS NOTED OTHERWISE. ALL FORCE MAINS UNDER PAVEMENT

- AND AT CONFLICT CROSSINGS SHALL BE AWWA C900, CLASS 200 PVC PIPE
- WATER PIPING THREE INCHES OR SMALLER SHALL MEET THE REQUIREMENTS OF AWWA C901 PE TUBING
- ALL COLD WATER METERS-DISPLACEMENT TYPE, BRONZE MAIN CASE, SIZE 1/2 INCH THROUGHOUT 2 INCH SHALL MEET THE REQUIREMENTS OF AWWA C700
- THE CONTRACTOR SHALL PROVIDE 72 HOURS WRITTEN NOTICE TO THE ENGINEER AND COLLIER COUNTY PRIOR TO THE FOLLOWING (AS APPLICABLE)
 - HOT TAPS TO POTABLE WATER LINES AND WASTEWATER SYSTEMS
 - MASTER METER AND BYPASS PIPING
 - JACK AND BORE CASINGS
 - PRESSURE TESTS
 - INFILTRATION / EXFILTRATION TESTS
 - LIFT STATION INSTALLATION, PRIOR TO COVER UP AND START-UP
 - LIFT STATION START-UP
 - LAMPING OF SEWER LINES
- PIPING AND FLUSHING OF WASTEWATER LINES, FORCE MAINS, POTABLE WATER MAINS AND NON-POTABLE IRRIGATION LINES (NOTE: FULL BORE FLUSHING AND PIGGING OF POTABLE WATER LINES NEED ONLY WATER DEPARTMENT INSPECTION)
- TELEVISION VIDEO TAPING OF WASTEWATER LINES AT END OF CONSTRUCTION AND THE WARRANTY PERIOD (ON OFFICE REVIEW)
- CONFLICT CONSTRUCTION
- CONNECTIONS TO EXISTING POTABLE WATER, NON-POTABLE IRRIGATION WATER AND WASTEWATER SYSTEMS
- CASING INSTALLATIONS ON 8" DIAMETER OR LARGER
- OTHER SPECIAL REQUIREMENTS AS SPECIFIED BY THE COUNTY STAFF AT THE TIME OF CONSTRUCTION DOCUMENT APPROVAL
- CHLORINATION OF WATER LINES AND REFRESHING OF LINE AFTER CHLORINATION (NEEDS ONLY WATER DEPARTMENT INSPECTION ONLY)
- INSTALLATION OF TEMPORARY METERS/BLOW-OFFS
- BACTERIOLOGICAL SAMPLING (NEEDS WATER DEPARTMENT INSPECTION ONLY)
- HOT TAPS TO ANY WATER CONCRETE MAINS, PRESSURE TESTS ON LINES 20" AND GREATER, AND CONNECTIONS TO EXISTING POTABLE SYSTEMS GREATER THAN 12" NEED TO BE INSPECTED BY THE WATER DEPARTMENT AND GMD ENGINEERING SERVICES
- FIRE FLOW TESTING

*AN INSPECTOR ON BEHALF OF THE COUNTY OR OTHER QUALIFIED EMPLOYEE OF THE COUNTY MUST BE PRESENT DURING INSPECTIONS MARKED WITH AN ASTERISK

GENERAL NOTES

- ELEVATIONS ARE BASED ON NORTH AMERICAN VERTICAL DATUM (NAVD 88). CONVERSION FROM NGVD 29 TO NAVD 88 = -1.234 FT.
- THE LOCATION OF EXISTING UTILITIES/INFRASTRUCTURE HAVE BEEN PREPARED FROM RECORD DRAWING AND FIELD INFORMATION. THE CONTRACTOR IS RESPONSIBLE FOR DETERMINING THE EXACT LOCATIONS PRIOR TO THE COMMENCEMENT OF CONSTRUCTION. ANY DISCREPANCIES SHALL BE REPORTED TO THE ENGINEER IMMEDIATELY
- COLLIER COUNTY, FLORIDA POWER AND LIGHT, TELEPHONE, AND CATV MAY HAVE EXISTING UTILITIES ADJACENT TO THE PROPOSED IMPROVEMENTS. CONTRACTOR SHALL CONTACT THE RESPECTIVE UTILITIES TO LOCATE THEIR FACILITIES PRIOR TO COMMENCEMENT OF CONSTRUCTION
- CONTRACTOR SHALL VERIFY ALL DIMENSIONS AND ELEVATIONS PRIOR TO COMMENCEMENT OF CONSTRUCTION. ANY DEVIATION IN PLAN INFORMATION SHALL BE REPORTED TO ENGINEER IMMEDIATELY
- ALL OFF-SITE DRAINAGE IMPROVEMENTS ASSOCIATED WITH THE CURRENT PHASE OF DEVELOPMENT, INCLUDING PERMEABLE BERMS, SWALES, STORMWATER OUTFALL SYSTEMS AND ON-SITE PERIMETER SWALES SHALL BE COMPLETED AND OPERATIONAL PRIOR TO COMMENCEMENT OF CONSTRUCTION OF ON-SITE IMPROVEMENTS
- CONTRACTOR IS RESPONSIBLE FOR IMPLEMENTING AND ADHERING TO A NATIONAL POLLUTANT DISCHARGE ELIMINATION SYSTEM (NPDES) GENERAL PERMIT FROM THE FLORIDA DEPARTMENT OF ENVIRONMENTAL PROTECTION (FDEP). CONTRACTOR SHALL CREATE, IMPLEMENT, AND MAINTAIN A STORM WATER POLLUTION PREVENTION PLAN AS REQUIRED BY THE NPDES GENERAL PERMIT
- UNDERGROUND CONTRACTOR SHALL MINIMIZE THE WORK AREA AND WIDTH OF TRENCHES TO AVOID DISTURBING NATURAL VEGETATION. MATERIAL REMOVED FROM THE TRENCHES SHALL BE PLACED ONLY ON PREVIOUSLY CLEARED AREAS OR AS DIRECTED BY THE OWNER
- ALL MATERIALS AND CONSTRUCTION METHODS USED FOR WATER, SEWER, AND DRAINAGE FACILITIES SHALL CONFORM TO THE APPROVED TECHNICAL SPECIFICATIONS
- THE REVIEW AND APPROVAL OF THESE CONSTRUCTION PLANS DOES NOT AUTHORIZE THE CONSTRUCTION OF REQUIRED IMPROVEMENTS, WHICH ARE INCONSISTENT WITH EXISTING EASEMENTS OF RECORD
- THE CONTRACTOR SHALL PREPARE AN AS-BUILT PLAN SET PER COLLIER COUNTY STANDARDS, INDICATING ANY DIFFERENCES FROM THE ACTUAL CONSTRUCTED IMPROVEMENTS AND THE ORIGINAL CONSTRUCTION PLANS. THE AS-BUILT PLAN SHALL BE SURVEY CERTIFIED FOR ALL IMPROVEMENTS BY A FLORIDA REGISTERED PROFESSIONAL LAND SURVEYOR
- ALL CONSTRUCTION TO BE IN ACCORDANCE WITH THE PROJECT'S TECHNICAL SPECIFICATIONS, FOOT STANDARD SPECIFICATIONS FOR ROAD AND BRIDGE CONSTRUCTION, LATEST EDITION, AND THE COLLIER COUNTY STANDARDS. CONTRACTOR IS REQUIRED TO OBTAIN FROM THE ENGINEER WRITTEN APPROVAL FOR ANY DEVIATIONS FROM THE PLANS AND/OR SPECIFICATIONS
- THE PROPERTY OWNER IS RESPONSIBLE FOR REPLACEMENT OF ALL DEAD LANDSCAPE MATERIAL AND FOR THE MAINTENANCE OF THE REQUIRED IRRIGATION SYSTEM
- THE PROPERTY OWNER IS RESPONSIBLE FOR THE PERPETUAL MAINTENANCE OF ALL FEATURES OF THE SURFACE WATER MANAGEMENT SYSTEM AS OUTLINED BY THE DESIGN ENGINEER ON THESE DRAWINGS
- ALL UNDER GROUND UTILITIES LOCATED BENEATH THE STABILIZED PORTION OF THE ROAD BED SHALL BE INSTALLED PRIOR TO COMPACTION OF THE SUBGRADE
- THE CONTRACTOR SHALL RETAIN ON THE WORK SITE AT ALL TIMES COPIES OF ALL PERMITS NECESSARY FOR CONSTRUCTION
- IF DEWATERING ACTIVITIES ARE REQUIRED FOR PROPER UTILITY INSTALLATION THEN THE CONTRACTOR IS RESPONSIBLE TO OBTAIN NECESSARY PERMITS, AND SHALL DEWATER IN ACCORDANCE WITH LOCAL, STATE AND FEDERAL PERMITS
- CONTRACTOR SHALL BE RESPONSIBLE FOR MAINTAINING TRAFFIC AND USAGE OF THE EXISTING STREETS ADJACENT TO THE PROJECT. ALL TRAFFIC MAINTENANCE CONTROL SHALL BE IN ACCORDANCE WITH SECTION 102 OF THE FDOT STANDARD SPECIFICATIONS AND WITH THE MANUAL ON UNIFORM TRAFFIC CONTROL DEVICES (MUTCD), PART 8. FOR WORK WITHIN A PUBLIC RIGHT-OF-WAY, CONTRACTOR TO FURNISH A COLLIER COUNTY APPROVED MAINTENANCE OF TRAFFIC PLAN
- SOLID WASTE DISPOSAL AND RECYCLING TO BE PROVIDED VIA CURB SIDE PICK-UP
- PRIOR TO THE ACCUMULATION OF COMBUSTIBLE BUILDING MATERIALS ON SITE, PROPOSED FIRE HYDRANTS MUST BE OPERABLE AND BE ABLE TO PROVIDE THE MINIMUM REQUIRED FIRE FLOW, AND IMPROVED STABILIZED EMERGENCY APPARATUS ACCESS WAYS (MIN. 20 FEET WIDE) MUST BE AVAILABLE TO WITHIN 100 FEET OF STRUCTURES
- OPTIONAL BRICK PAVERS MAY BE INSTALLED IN LIEU OF ASPHALT PAVEMENT AT THE DISCRETION OF THE OWNER. SEE TYPICAL SECTIONS AND DETAILS FOR PAVEMENT SECTIONS
- THE APPROVAL OF THESE CONSTRUCTION PLANS DOES NOT AUTHORIZE CONSTRUCTION OF REQUIRED IMPROVEMENTS WHICH ARE INCONSISTENT WITH EASEMENTS OF RECORD
- A COUNTY PERMIT TO PERFORM WORK AND / OR MAINTENANCE IN THE PUBLIC RIGHT-OF-WAY IS REQUIRED FOR WORK WITHIN THE PUBLIC RIGHT-OF-WAY ON RATTLESNAKE HAMMOCK ROAD
- THE LENGTH OF STORM DRAIN PIPES SHOWN ON PLANS ARE APPROXIMATE AND HAVE BEEN MEASURED FROM THE INSIDE FACE OF STRUCTURE
- LOCATIONS OF DRAINAGE STRUCTURES MAY BE FIELD ADJUSTED TO PRESERVE EXISTING VEGETATION AS APPROVED BY THE ENGINEER
- THE CONTRACTOR IS REQUIRED TO ADJUST ALL EXISTING AND PROPOSED VALVE BOXES, MANHOLE RIMS, GRATES, ETC. AS REQUIRED TO MATCH PROPOSED GRADES
- EXISTING OFF-SITE DRAINAGE PATTERNS SHALL BE MAINTAINED DURING CONSTRUCTION
- SWALE PROFILES SHOWN ARE TO TOP OF SOG. CONTRACTOR TO ADJUST SWALE GRADING ACCORDINGLY
- CONTRACTOR SHALL BOD A 12" MINIMUM STRIP BEHIND ALL CONCRETE CURB, VALLEY GUTTER AND AT EDGE OF PAVEMENT
- THE CONTRACTOR SHALL REMOVE ALL UNSUITABLE MATERIAL ENCOUNTERED FROM FILL AREAS. PRIOR TO PLACEMENT OF FILL, ALL UNSUITABLE MATERIAL EXCAVATED SHALL BE STOCKPILED OR REMOVED AS DIRECTED BY OWNER
- DURING CONSTRUCTION, DRAINAGE STRUCTURE OPENINGS, WHERE APPROPRIATE, SHALL BE COVERED WITH FILTER FABRIC (MIRAF 140N OR APPROVED EQUAL) TO PREVENT DEBRIS AND FILL FROM FALLING INTO THE INLET

UTILITIES PROVIDING SERVICE

POTABLE WATER AND SANITARY SEWER	CABLE TELEVISION	GAS
COLLIER COUNTY PUBLIC UTILITIES DIVISION 3031 EAST TAMIAM TRAIL NAPLES, FLORIDA 34112 PHONE (239) 252-5888	COMCAST CABLE COMMUNICATIONS, INC. COMMERCIAL DEVELOPMENT 3901 WICHAMAR AVENUE FORT MYERS, FLORIDA 33919 PHONE (239) 432-1805	TECO PEOPLES GAS 5901 ENTERPRISE PARKWAY FORT MYERS, FLORIDA 33905 PHONE (239) 806-0812
TELEPHONE	FIRE CONTROL DISTRICT	ELECTRIC
CENTURY LINK INC. P.O. BOX 988 NAPLES, FLORIDA 34106-2468 PHONE (800) 339-1511	NORTH COLLIER FIRE CONTROL & RESCUE DISTRICT 6405 TAYLOR ROAD NAPLES, FL 34109 (239) 587-6227	FLORIDA POWER AND LIGHT COMPANY 4105 15 TH AVENUE SW NAPLES, FLORIDA 34116 PHONE (239) 353-8005
UTILITY LOCATING SERVICE		
BUSHING #11 PHONE (800) 838-4087 MINIMUM 7 BUSINESS DAYS NOTICE (REQUIRED)		

**WALDROP
ENGINEERING**



PLANS AND PLAT
ESPLANADE
GOLF AND COUNTRY CLUB OF NAPLES - PHASE 4
CLIENT: TAYLOR MORRISON OF FLORIDA, INC.

MASTER UTILITY PLAN

CIVIL ENGINEERING &
LAND DEVELOPMENT CONSULTANTS
28100 BONITA GRANDE DRIVE - SUITE 305 BONITA SPRINGS, FL 34135
P: 239-405-7777 F: 239-405-7899 EMAIL: info@waldropengineering.com

PLAN REVISIONS

REVISIONS
A
B
C
D
E
F
G
H
I
J
K
L
M
N
O
P
Q
R
S
T
U
V
W
X
Y
Z
AA
AB
AC
AD
AE
AF
AG
AH
AI
AJ
AK
AL
AM
AN
AO
AP
AQ
AR
AS
AT
AU
AV
AW
AX
AY
AZ
BA
BB
BC
BD
BE
BF
BG
BH
BI
BJ
BK
BL
BM
BN
BO
BP
BQ
BR
BS
BT
BU
BV
BW
BX
BY
BZ
CA
CB
CC
CD
CE
CF
CG
CH
CI
CJ
CK
CL
CM
CN
CO
CP
CQ
CR
CS
CT
CU
CV
CW
CX
CY
CZ
DA
DB
DC
DD
DE
DF
DG
DH
DI
DJ
DK
DL
DM
DN
DO
DP
DQ
DR
DS
DT
DU
DV
DW
DX
DY
DZ
EA
EB
EC
ED
EE
EF
EG
EH
EI
EJ
EK
EL
EM
EN
EO
EP
EQ
ER
ES
ET
EU
EV
EW
EX
EY
EZ
FA
FB
FC
FD
FE
FF
FG
FH
FI
FJ
FK
FL
FM
FN
FO
FP
FQ
FR
FS
FT
FU
FV
FW
FX
FY
FZ
GA
GB
GC
GD
GE
GF
GG
GH
GI
GJ
GK
GL
GM
GN
GO
GP
GQ
GR
GS
GT
GU
GV
GW
GX
GY
GZ
HA
HB
HC
HD
HE
HF
HG
HH
HI
HJ
HK
HL
HM
HN
HO
HP
HQ
HR
HS
HT
HU
HV
HW
HX
HY
HZ
IA
IB
IC
ID
IE
IF
IG
IH
II
IJ
IK
IL
IM
IN
IO
IP
IQ
IR
IS
IT
IU
IV
IW
IX
IY
IZ
JA
JB
JC
JD
JE
JF
JG
JH
JI
JJ
JK
JL
JM
JN
JO
JP
JQ
JR
JS
JT
JU
JV
JW
JX
JY
JZ
KA
KB
KC
KD
KE
KF
KG
KH
KI
KJ
KK
KL
KM
KN
KO
KP
KQ
KR
KS
KT
KU
KV
KW
KX
KY
KZ
LA
LB
LC
LD
LE
LF
LG
LH
LI
LJ
LK
LM
LN
LO
LP
LQ
LR
LS
LT
LU
LV
LW
LX
LY
LZ
MA
MB
MC
MD
ME
MF
MG
MH
MI
MJ
MK
ML
MN
MO
MP
MQ
MR
MS
MT
MU
MV
MW
MX
MY
MZ
NA
NB
NC
ND
NE
NF
NG
NH
NI
NJ
NK
NL
NM
NO
NP
NQ
NR
NS
NT
NU
NV
NW
NX
NY
NZ
OA
OB
OC
OD
OE
OF
OG
OH
OI
OJ
OK
OL
OM
ON
OO
OP
OQ
OR
OS
OT
OU
OV
OW
OX
OY
OZ
PA
PB
PC
PD
PE
PF
PG
PH
PI
PJ
PK
PL
PM
PN
PO
PP
PQ
PR
PS
PT
PU
PV
PW
PX
PY
PZ
QA
QB
QC
QD
QE
QF
QG
QH
QI
QJ
QK
QL
QM
QN
QO
QP
QQ
QR
QS
QT
QU
QV
QW
QX
QY
QZ
RA
RB
RC
RD
RE
RF
RG
RH
RI
RJ
RK
RL
RM
RN
RO
RP
RQ
RR
RS
RT
RU
RV
RW
RX
RY
RZ
SA
SB
SC
SD
SE
SF
SG
SH
SI
SJ
SK
SL
SM
SN
SO
SP
SQ
SR
SS
ST
SU
SV
SW
SX
SY
SZ
TA
TB
TC
TD
TE
TF
TG
TH
TI
TJ
TK
TL
TM
TN
TO
TP
TQ
TR
TS
TT
TU
TV
TW
TX
TY
TZ
UA
UB
UC
UD
UE
UF
UG
UH
UI
UJ
UK
UL
UM
UN
UO
UP
UQ
UR
US
UT
UU
UV
UW
UX
UY
UZ
VA
VB
VC
VD
VE
VF
VG
VH
VI
VJ
VK
VL
VM
VN
VO
VP
VQ
VR
VS
VT
VU
VV
VW
VX
VY
VZ
WA
WB
WC
WD
WE
WF
WG
WH
WI
WJ
WK
WL
WM
WN
WO
WP
WQ
WR
WS
WT
WU
WV
WW
WX
WY
WZ
XA
XB
XC
XD
XE
XF
XG
XH
XI
XJ
XK
XL
XM
XN
XO
XP
XQ
XR
XS
XT
XU
XV
XW
XX
XY
XZ
YA
YB
YC
YD
YE
YF
YG
YH
YI
YJ
YK
YL
YM
YN
YO
YP
YQ
YR
YS
YT
YU
YV
YW
YX
YY
YZ
ZA
ZB
ZC
ZD
ZE
ZF
ZG
ZH
ZI
ZJ
ZK
ZL
ZM
ZN
ZO
ZP
ZQ
ZR
ZS
ZT
ZU
ZV
ZW
ZX
ZY
ZZ

FLORIDA CERTIFICATE OF AUTHORIZATION #636

JEREMY H. ARNO, D.P.E.
FL LICENSE NO. 66621

SET NUMBER: 278-36-01

SHEET: 4

ELEVATIONS ARE BASED ON: NAVD - 88