



PROTECTED SPECIES SURVEY

CITY GATE STORAGE

NAPLES, FLORIDA

APPROXIMATELY 4.33 ACRES

PREPARED FOR:



**COLLIER COUNTY ENGINEERING &
NATURAL RESOURCES DEPARTMENT
2800 NORTH HORSESHOE DRIVE
NAPLES, FL 34104**



**SOUTH FLORIDA WATER MANAGEMENT DISTRICT (SFWMD)
Lower West Coast Service Center
2301 McGregor Boulevard
Fort Myers, FL 33901**

January 25, 2016



INTRODUCTION

The purpose of this report is to provide a search for listed species on the subject property prior to development. The City Gate Storage property is part of the first phase of the City Gate development, which was fully permitted in 2009 by the South Florida Water Management District (SFWMD) and the US Fish & Wildlife Service (USFWS). This updated survey was necessary because the property has sat vacant since it was originally permitted.

LOCATION

The City Gate Storage parcel is made up of 3 individual platted lots and is located east of Collier Boulevard, just north of Interstate 75. Specifically, the property within Phase I of City Gate Commerce Park in Section 35, Township 49 South, Range 26 East, Naples, Florida. See (Figure 1) for a location map. According to the Collier County property appraiser, the property totals approximately 4.33 acres.

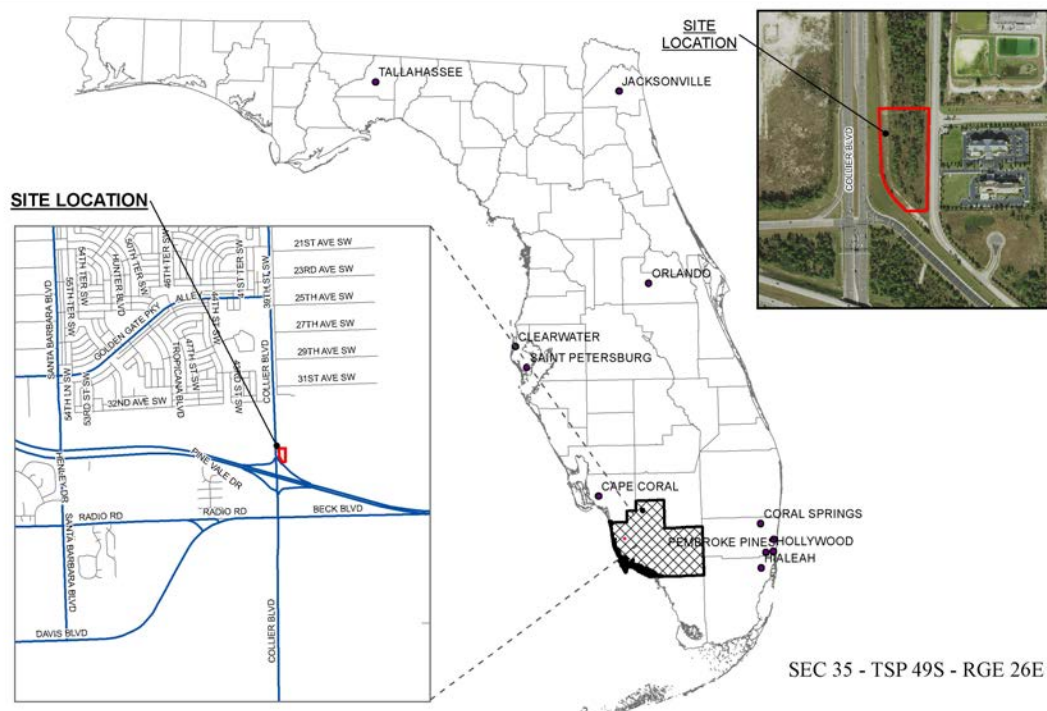


Figure 1. Property Location.

SPECIES SURVEY MATERIALS & METHODS

The species survey was conducted using a methodology similar to that discussed in the Florida Fish & Wildlife Conservation Commission (FWC) publication "Ecology and Habitat Protection Needs of Gopher Tortoise (*Gopherus polyphemus*) Populations Found on Lands Slated for Large-scale Development in Florida." This methodology is as follows: Existing vegetation communities or land-uses on the subject site are delineated on a recent aerial photograph (Collier County 2015) using the Florida Land Use, Cover and Forms Classification System (FLUCCS). FLUCCS mapping for this property is detailed below in (Figures 2 & 3). The resulting FLUCCS codes are cross-referenced with a list of protected plant and animal species. The lists were obtained from two agency publications:

- ❖ A list of animals and birds was obtained from the FWC publication "Florida's Endangered Species, Threatened Species & Species of Special Concern-Official Lists", Publication Date: January 2013.

- ❖ A list of protected plant species was obtained from the publication "Notes on Florida's Endangered and Threatened Plants", Florida Department of Agriculture and Consumer Services, Division of Plant Industry, Bureau of Entomology, Nematology & Plant Pathology-Botany Section, Contribution 38, 5th Edition (2010).

The result is a composite table that contains the names of the protected species which have the highest probability of occurring in each particular FLUCCS community. See table 1 of this report for the species list that applies to this property.

In the field, each FLUCCS community is searched for listed species or signs of listed species. This is accomplished using a series of transects throughout each vegetation community. If necessary, transect integrity is maintained using a handheld GPS in track mode.

Signs or sightings of all listed and non-listed species are then recorded. Listed species locations are typically flagged and marked by GPS.

Based on the habitat types found on this parcel of land, particular attention was paid to the presence or absence of gopher tortoise, fox squirrels, bonneted bats, and listed plants.

EXISTING SITE CONDITIONS

Temperatures during the fieldwork for this survey were in the low to mid 60's. Cloud cover was absent. Approximately two (2) man-hours were logged on the property during this species survey. Table 3 details dates and times spent in the field.

The Subject Property has the following surrounding land uses:

West	Collier Boulevard
North	Vacant Land (Previously Permitted for Industrial Lots)
South	Exit Ramp for I-75
East	White Lake Boulevard \ Commercial Development (Hotels)

Listed below are the FLUCCS communities identified on the site. The following community descriptions correspond to the mappings on the FLUCCS map below. See Florida Land Use, Cover and Forms Classification System (Department of Transportation, Surveying & Mapping Geographic Mapping Section, 1999) for definitions.

FLUCCS 411-EI, Pine Flatwoods (0 to 25% Exotics), 2.33 Acres

This community is dominated by widely scattered slash pine in the canopy. Mid-story is generally absent. Other vegetation present includes ear leaf acacia, grapevine, dog fennel, broom sedge, porterweed, Spanish needles, wiregrass, and Mexican clover.

FLUCCS 740, Disturbed Lands, 0.89 Acres

This portion of this mapping is located along the entire east side of the parcel. It was historically cleared and contains no canopy vegetation. Groundcover vegetation present includes grapevine, wiregrass, Spanish needles, Mexican clover, bahia, and ragweed.

FLUCCS 814, Abandoned Road Right-of-Way, 1.11 Acres

This portion of the property, found along the entire east side of the parcel was previously the old right-of-way (ROW) for White Lake Boulevard. White Lake Boulevard was relocated from this area to its current location along the eastern side of the property. The old road bed is predominately hard packed fill material. Canopy and mid-story vegetation is absent. Groundcover vegetation includes, grapevine, porterweed, Spanish needles, bahia, and Mexican clover.

The following table is summary of FLUCCS communities and corresponding acreages:

CODE	DESCRIPTION	ACREAGE
411	Pine Flatwoods	2.33 acres
740	Disturbed Lands	0.89 acres
814	Abandoned Road ROW	1.11 acres
Site Total:		4.33 acres



Figure 2. Aerial with FLUCCS Mapping.

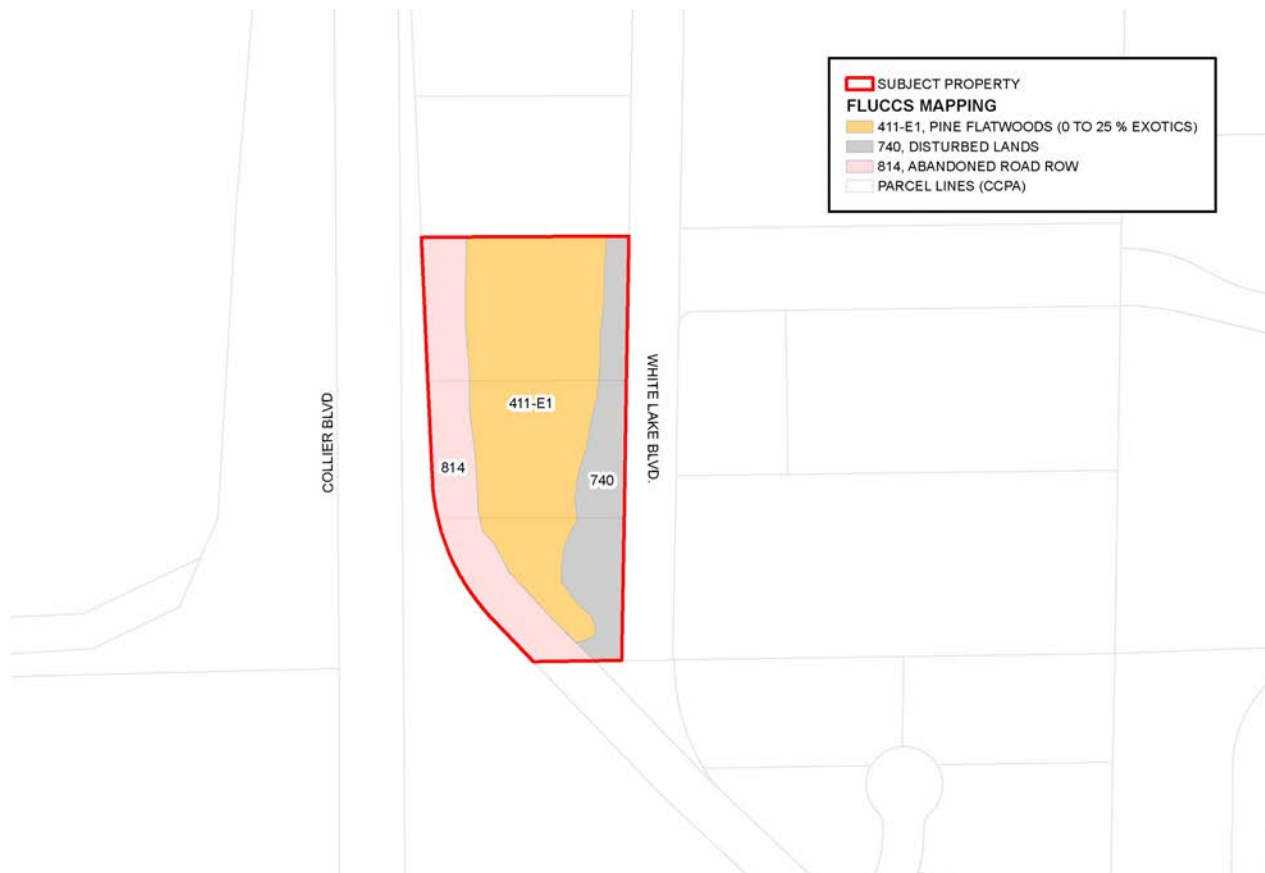


Figure 3. FLUCCS Mapping.

RESULTS\ DISCUSSION

The various protected species which may occur in the corresponding FLUCCS communities are shown in Table 1.

All animal species observed on the subject parcel are detailed in Table 2. Within Table 2, any protected species observed are specifically noted.

See (Figure 4) below for results and field observations.

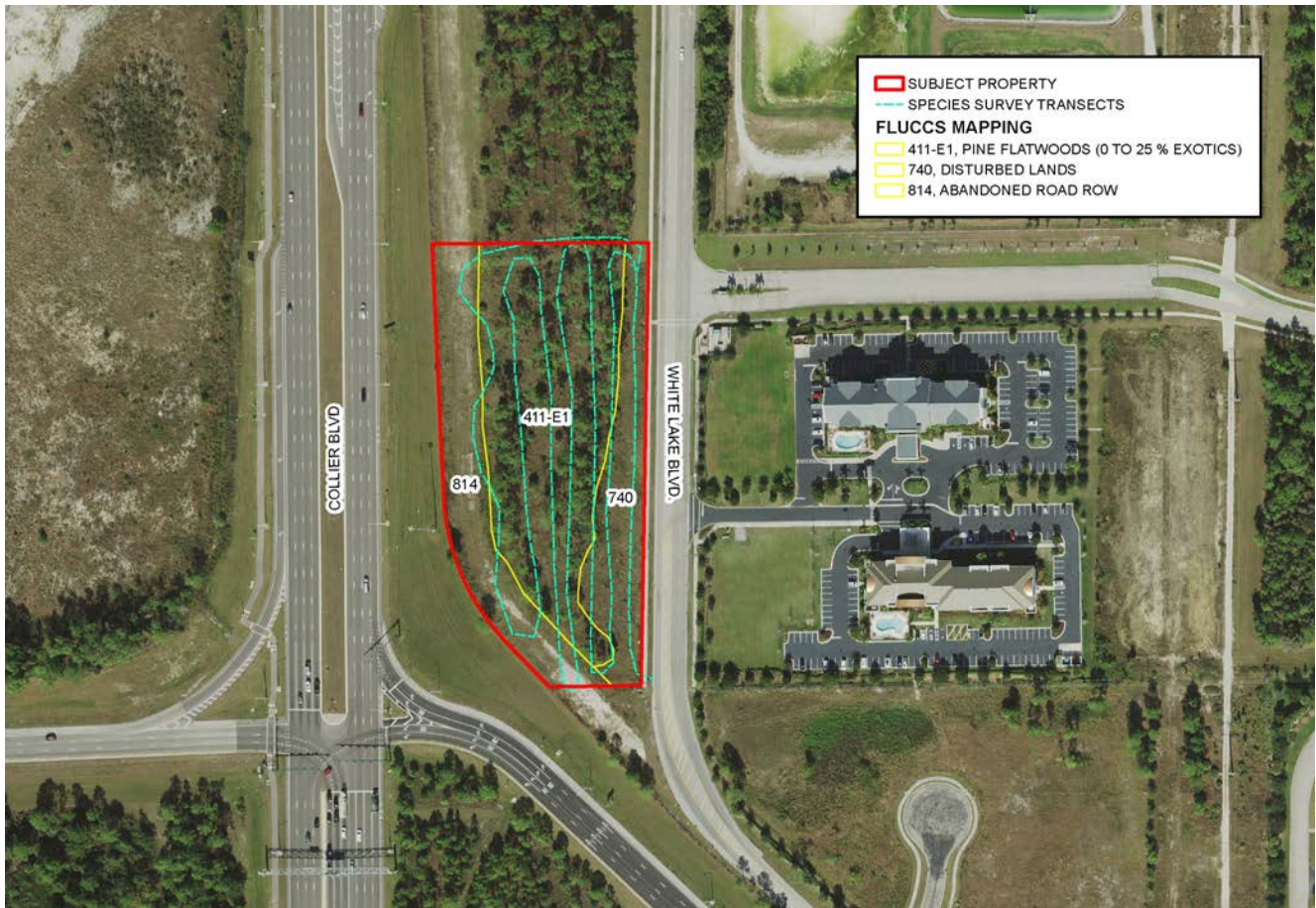


Figure 4. Protected Species Survey Transect Map & Field Results.

Below are discussions of each listed species observed on the property:

No listed species or signs of listed species were observed on the subject property.

Table 1. Protected species list according to FLUCCS category.

FLUCCS	Potential Listed Species	Scientific Name	Designated Status	
			FWC or FDA	FWS
411	Beautiful Pawpaw	Deeringothamnus pulchellus	E	E
	Big Cypress Fox Squirrel	Sciurus niger avicennia	T	-
	Eastern Indigo Snake	Drymarchon corais couperi	T	T
	Fakahatchee Burmannia	Burmannia flava	E	-
	Florida Black Bear	Ursus americanus floridanus	T	-
	Florida Coontie	Zamia floridana	C	-
	Florida Panther	Felis concolor coryi	E	E
	Gopher Frog	Rana capito	SSC	-
	Gopher Tortoise	Gopherus polyphemus	SSC	-
	Red-Cockaded Woodpecker	Picoides borealis	T	E
	Satinleaf	Chrysophyllum oliviforme	E	-
	Southeastern American Kestrel	Falco sparverius paulus	T	-
	Twisted Air Plant	Tillandsia flexouosa	E	-
	Burrowing Owl	Speotyto cunicularia	SSC	-
740	Gopher Tortoise	Gopherus polyphemus	SSC	-
	NONE	-	-	-

Abbreviations:**Agencies**

FWC=Florida Fish and Wildlife Conservation Commission

FDA=Florida Department of Agriculture and Consumer Services

FWS=United States Fish and Wildlife Service

Status

E=Endangered

T=Threatened

T(S/A)=Threatened/Similarity of Appearance

SSC=Species of Special Concern

C=Commercially Exploited

Table 2. Birds, Mammals, Amphibians, Reptiles, & Plants Observed on the Subject Property.**Birds**

Common Name	Scientific Name	Observation Type	Listed? (Y/N)	Status
Black Vulture	Coragyps atratus	DV	N	-
Mockingbird	Cyanocitta cristata	DV	N	-

Mammals

Common Name	Scientific Name	Observation Type	Listed? (Y/N)	Status
NONE	-	-	-	-

Reptiles

Common Name	Scientific Name	Observation Type	Listed? (Y/N)	Status
NONE	-	-	-	-

Amphibians

Common Name	Scientific Name	Observation Type	Listed? (Y/N)	Status
NONE	-	-	-	-

Plants

Common Name	Scientific Name	Observation Type	Listed? (Y/N)	Status
NONE	-	-	-	-

 =Protected Species

Abbreviations:Agencies

FWC=Florida Fish and Wildlife Conservation Commission

FDA=Florida Department of Agriculture and Consumer Services

FWS=United States Fish and Wildlife Service

Status

E=Endangered

T=Threatened

T(S/A)=Threatened/Similarity of Appearance

SSC=Species of Special Concern

CE=Commercially Exploited

Observations

DV=Direct Visual

HV=Heard Vocalization

OT=Observed Tracks

OH=Observed Hole\Burrow

MT=Marked Tree

C=Cavity

DB=Day Bed

N=Nest

Table 3. Field time spent on the subject property.

Date	Start Time	End Time	Man Hours	Task
January 25, 2016	8:30 am	10:30 am	2.0	Species Survey
	Total		2.0	