

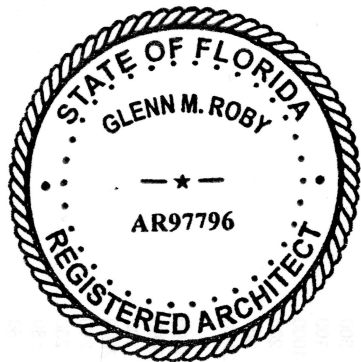
GENERAL NOTES	
1.	COORDINATE TRASH COMPACTOR EQUIPMENT INSTALLATION AND ELECTRICAL CONNECTIONS WITH OWNER AND VENDOR.
2.	CONTRACTOR TO PROVIDE ELECTRICAL STUB OUT FOR COMPACTOR CONTROLS ASSEMBLY. PROVIDE CONDUIT FROM ADJACENT HOUSE PANEL AT GARAGE OR APARTMENT BUILDING. DOOR LOCATION TO BE ADJUSTED PER MANUFACTURERS SPECIFICATIONS. ALIGN WALL ENCLOSURE DOOR W/ COMPACTOR DOOR.
3.	SAW CUT CONTROL JOINTS IN CONCRETE APRON AND CONCRETE SLAB WITHIN 24 HOURS. COORDINATE SPACING IN FIELD
4.	PROVIDE STEEL DRAIN GRATE OVER TRENCH DRAIN. VERIFY WITH CIVIL
5.	REFER TO SHEET AS1.2 FOR BOLLARD DETAILS
EXTERIOR FINISH COLORS	
ALUMINUM GATE/FENCE	PRE-FINISHED - BLACK
BOLLARD	SW #7006 "EXTRA WHITE"
COLUMN WRAP	SW #7006 "EXTRA WHITE"
ENTRY DOORS	SW #6222 "RIVERWAY" AT CLUBHOUSE SW #7067 "CITYSCAPE"
EXTERIOR CEILING	PRE-FINISHED - COLONIAL WHITE
FASCIA	SW #7006 "EXTRA WHITE"
GARAGE DOOR	SW #7006 "GRAY MATTERS"
GUTTERS / DOWNSPOUTS	PRE-FINISHED - WHITE
MORTAR	MATCH STONE COLOR (ANTIQUE BUFF)
SHINGLES	CONCRETE ROOFING TILE: SEE OWNERS FINISH SCHEDULE
SIDING COLOR A	SW #7098 "GRAY MATTERS"
SIDING COLOR B	SW #9183 "TIN LIZZIE"
SIDING COLOR C	SW #7085 "ARGOS"
SIDING COLOR D	SW #7067 "CITYSCAPE"
SOFFIT	PRE-FINISHED - COLONIAL WHITE
STONE 1	CORONADO STONE, CARIBBEAN CORAL S411
STONE SILL/CAP	NATURAL
TRIM	SW #7006 "EXTRA WHITE"
WOODEN GATE	SW #7006 "EXTRA WHITE"

KEYED NOTES	
T.1	CONCRETE APRON - REFER TO CIVIL DRAWINGS FOR SIZE AND GEOMETRY
T.2	PROVIDE CONTROL JOINT AT LOCATION INDICATED
T.3	1/2" EXPANSION JOINT FILLER, TYP.
T.5	PIPE LINED CANE BOLT SLEEVE LOCATIONS
T.6	TRENCH DRAIN - COORDINATE WITH CIVIL
T.7	TRASH COMPACTOR - PROVIDE 2'-0" MINIMUM CLEARANCE AROUND COMPACTOR. COORDINATE ENCLOSURE SIZE WITH COMPACTOR DIMENSIONS.
T.8	COORDINATE LOCATION OF CONTROL ASSEMBLY WITH COMPACTOR MANUFACTURER
T.9	CONTRACTOR SHALL PROVIDE ELECTRICAL STUB-OUT FOR COMPACTOR CONTROLS ASSEMBLY. PROVIDE CONDUIT FROM ADJACENT ELECTRICAL HOUSE PANEL AT CLUBHOUSE, GARAGE OR APARTMENT BUILDING. REFER TO ELECTRICAL DRAWINGS.
T.10	DUMPSTER - 5'-6" DEEP x 6'-0" WIDE VERIFY IN FIELD
T.11	PAINT INTERIOR WALLS OF TRASH COMPACTOR ENCLOSURE AND RECYCLING ENCLOSURE TO MATCH EXTERIOR SIDING

MATERIALS & COMPONENTS	
FOUNDATION 1	POST TENSION SLAB AND FOUNDATION SYSTEM w/10 MILL VAPOR BARRIER AND 2" MIN COMPACTED STONE BASE. PROVIDE ARCHITECTURAL RUBBED CONCRETE FINISH FOR EXPOSED FOUNDATIONS 8" MIN. ABOVE GRADE/LANDSCAPING. SEAL OR STAIN FINISH AS SELECTED BY OWNER - REFER TO STRUCTURAL DRAWINGS FOR ADDITIONAL INFORMATION.
SIDING 2	HARDIE PANEL CEDARMILL FIBER CEMENT VERTICAL SIDING W/ HARDIE TRIM 1x3 BATTEN BOARDS AT 16" OC VERTICAL. INSTALLED PER MANUFACTURER'S RECOMMENDATIONS. COLOR - REFER TO COLOR SCHEMES.

**Kahler Slater**  
experience design

**CONTINENTAL** PROPERTIES  
CONTINENTAL 422 FUND LLC  
W134 N8675 EXECUTIVE PARKWAY  
MENOMONEE FALLS, WI 53051  
262.502.5500 \* FAX 262.502.5522



Revisions
CONSTRUCTION DOCUMENTS

BID / PERMIT SET

Drawing Date  
JANUARY 31, 2018

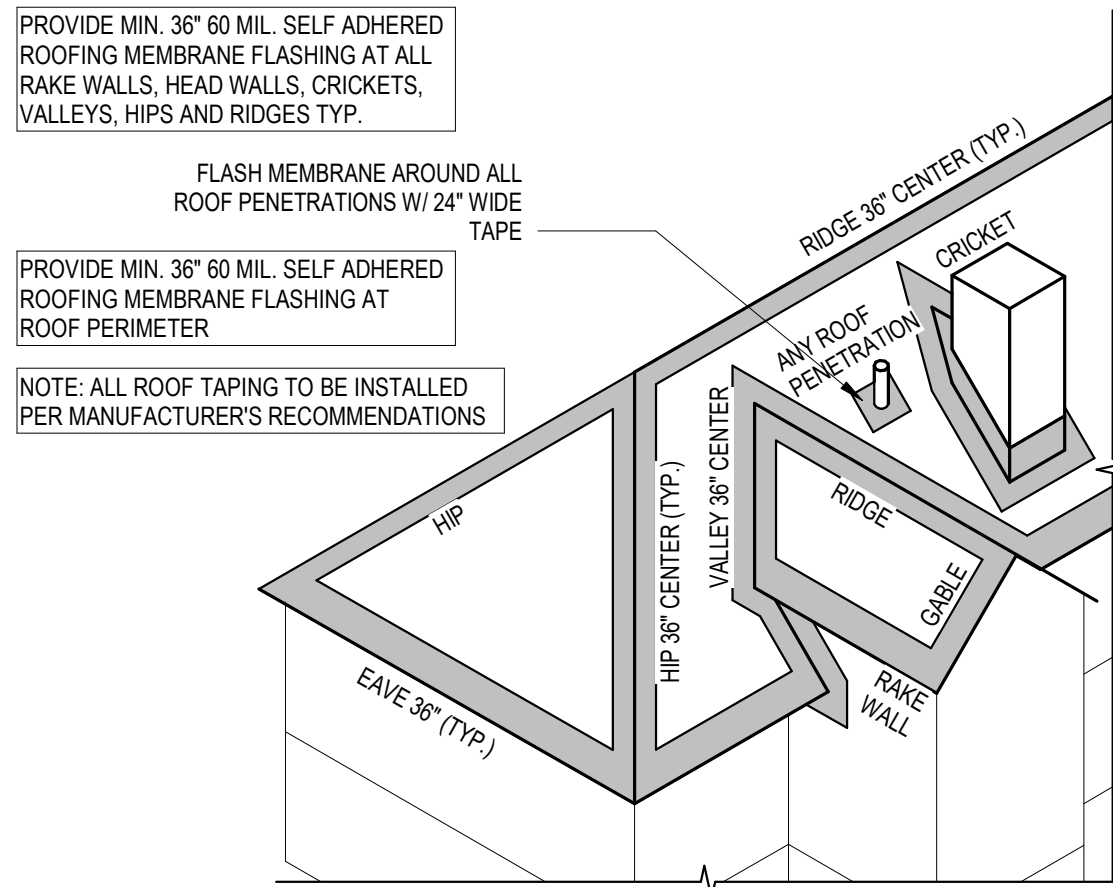
TRASH ENCLOSURE

SPRINGS AT HAMMOCK COVE  
THOMASSON DR. & CARDINAL WAY  
NAPLES, FL 34112

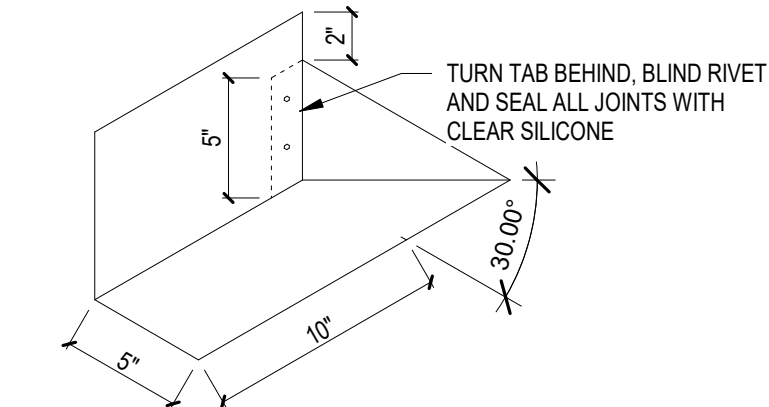
Project No.  
216026.04

Sheet Title  
TRASH ENCLOSURE  
PLANS, ELEVATIONS  
AND DETAILS

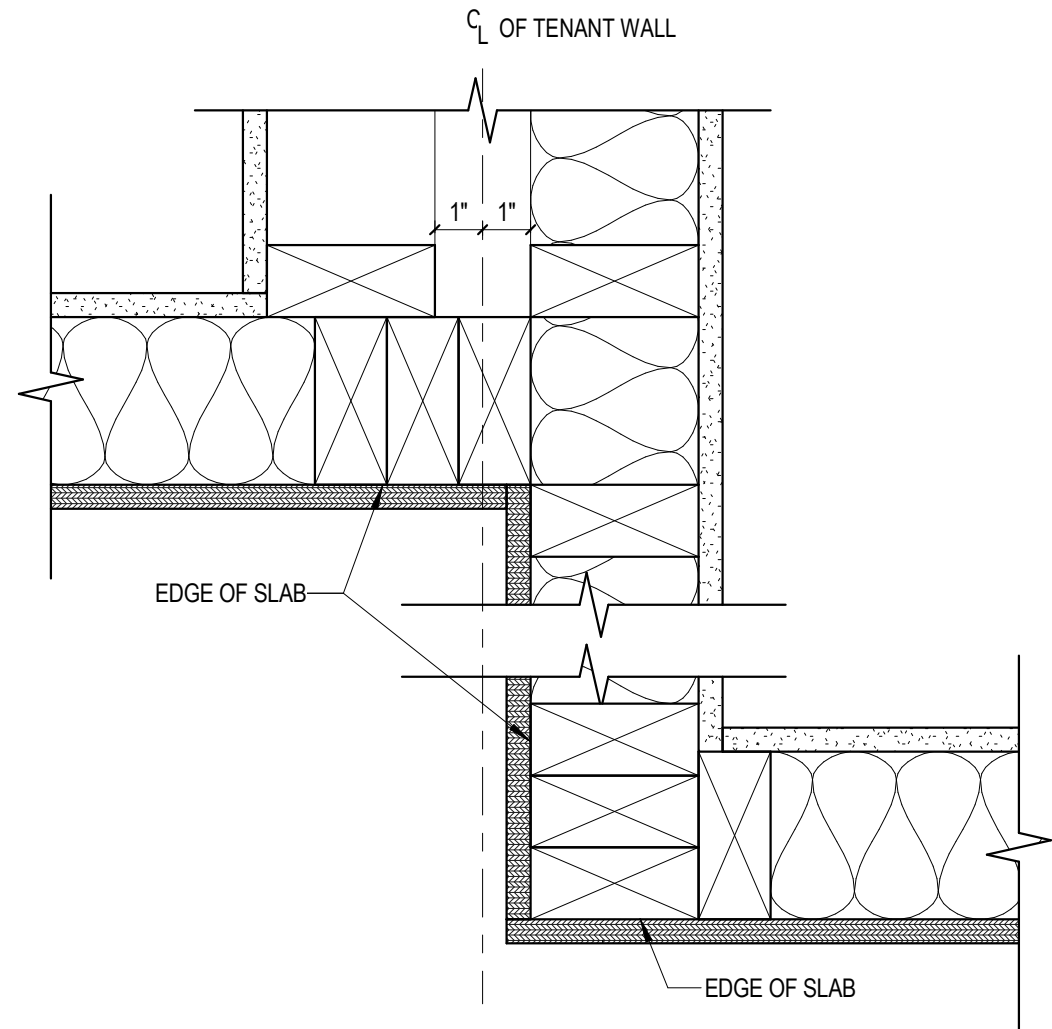
Copyright © 2018 Kahler Slater, Inc. All rights reserved.  
111 West Wisconsin Avenue, Milwaukee, Wisconsin 53203  
Telephone 414.272.2000 Fax 414.272.2001  
44 East Mifflin Street, Suite 700, Madison, Wisconsin 53703  
Telephone 608.283.6300 Fax 608.283.6317  
Sheet No.  
A1.T.11



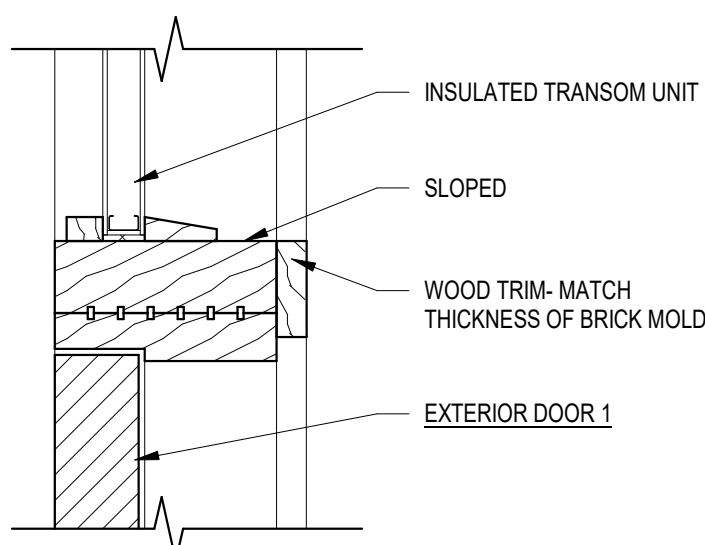
28 ROOF TAPING DETAIL  
3" = 1'-0"



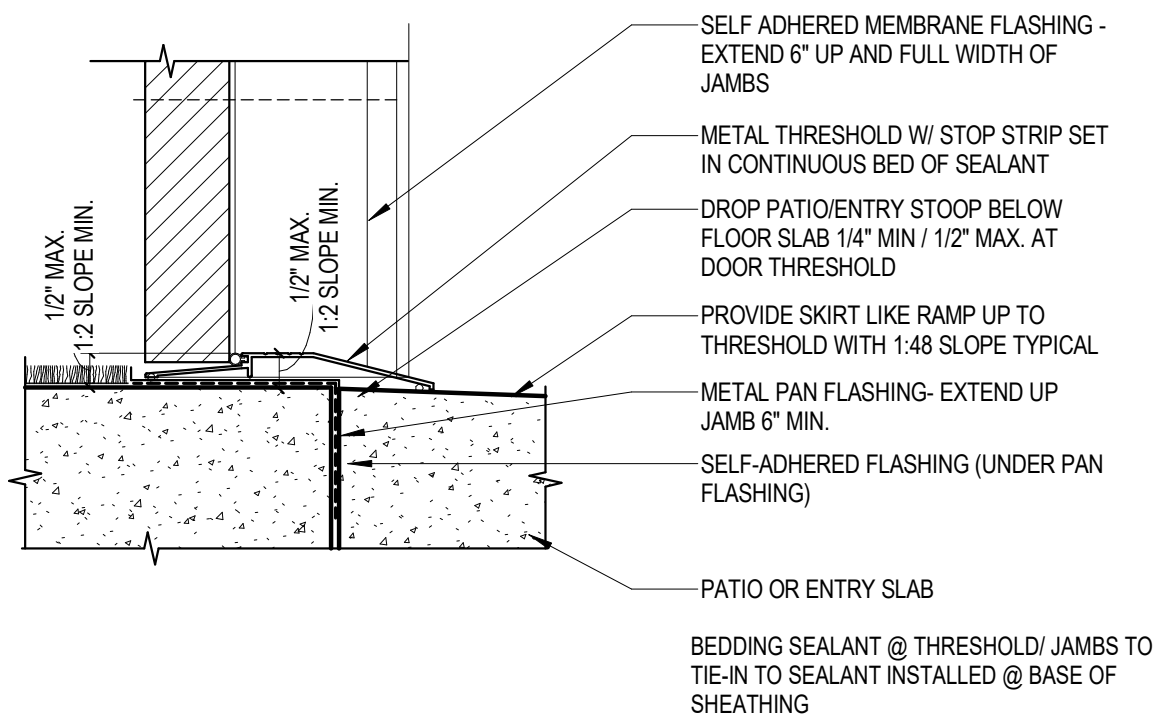
17 DIVERTER DETAIL  
1 1/2" = 1'-0"



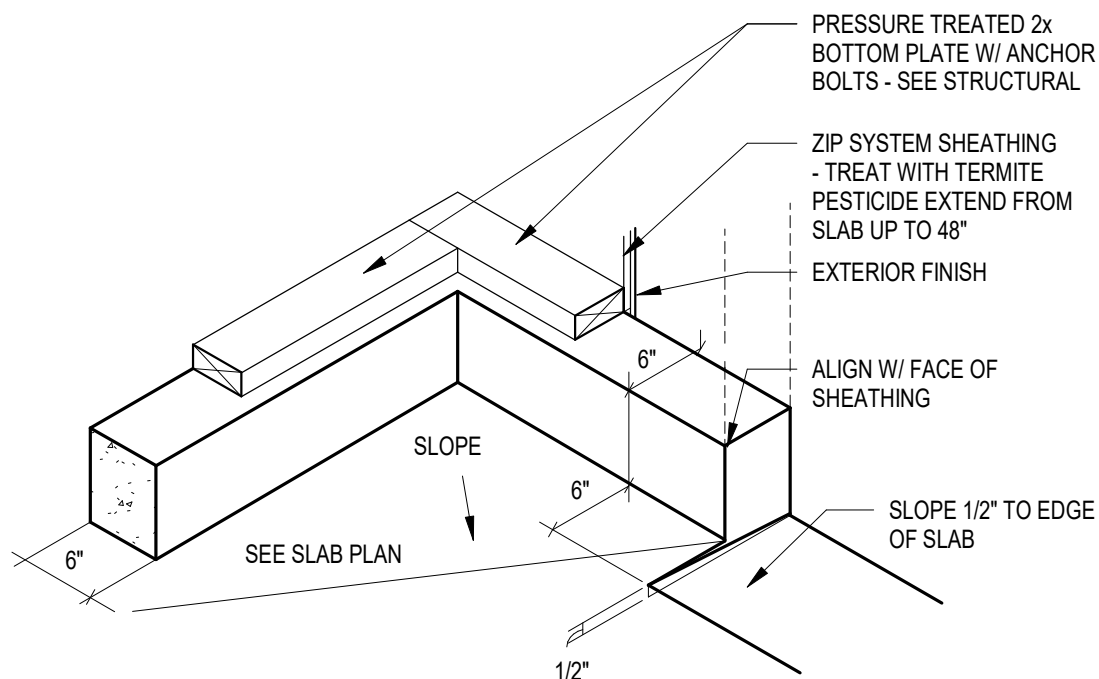
15 EDGE OF SLAB DETAIL  
3" = 1'-0"



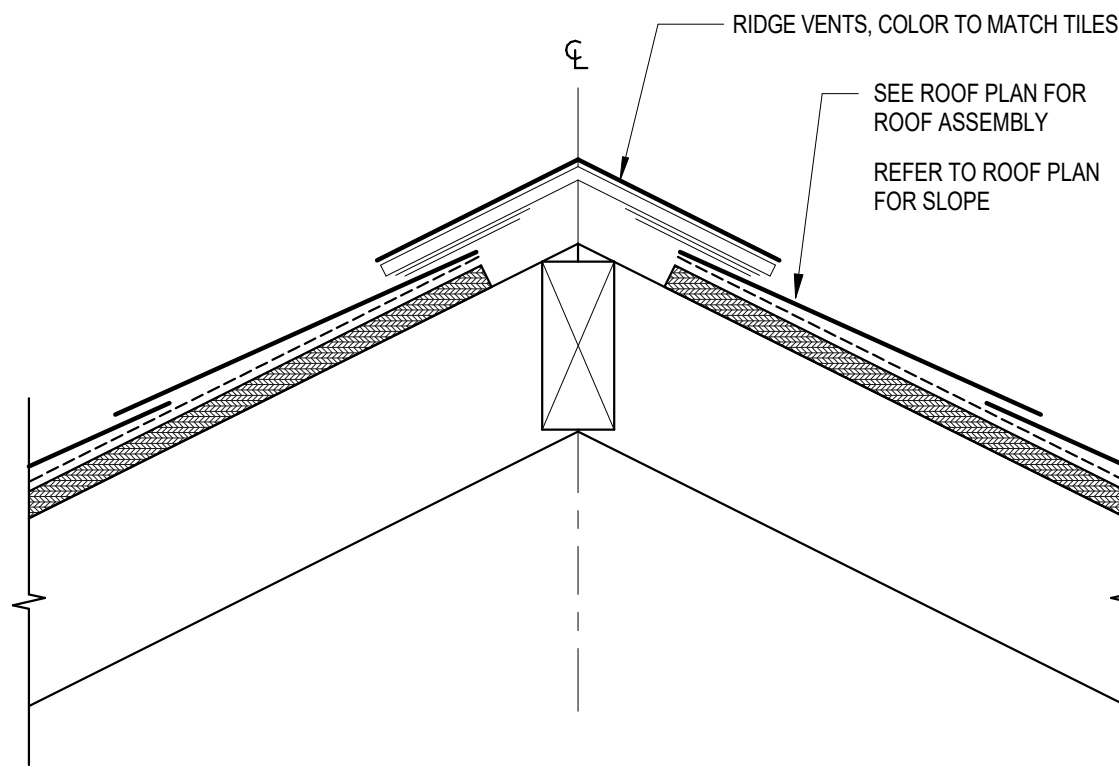
27 DOOR DETAIL - HEAD AT TRANSOM  
3" = 1'-0"



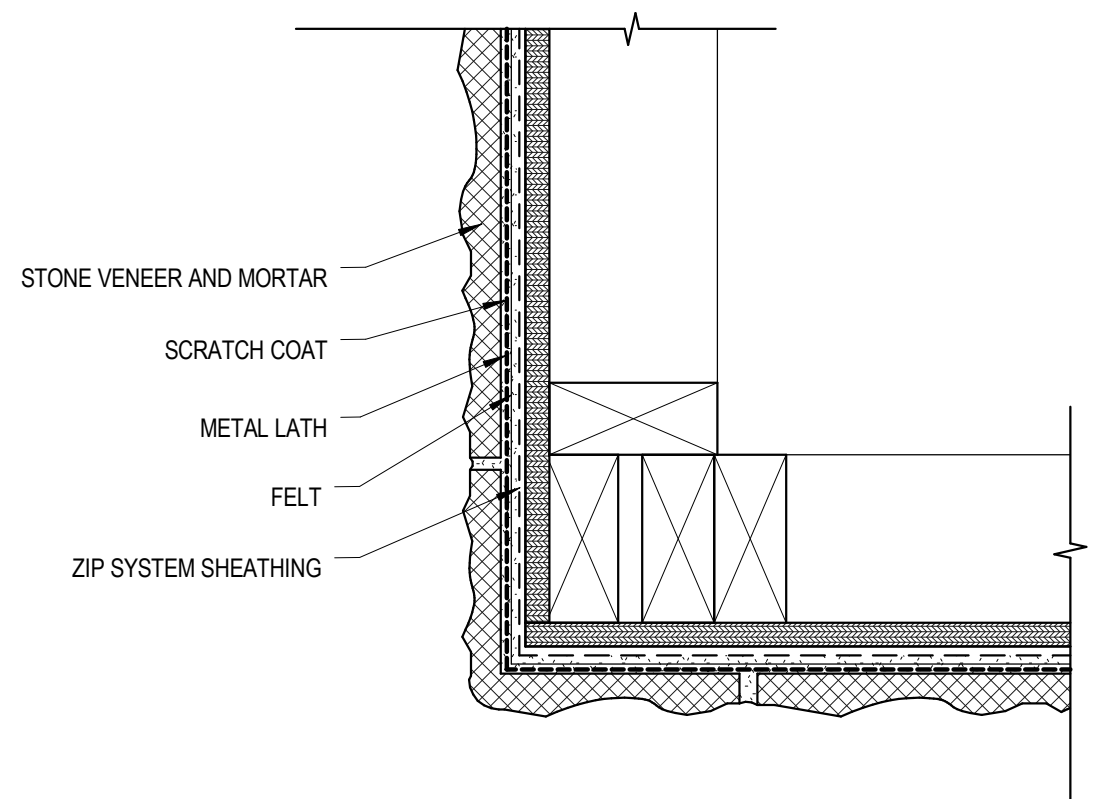
26 TYPICAL DOOR THRESHOLD SILL DETAIL  
3" = 1'-0"



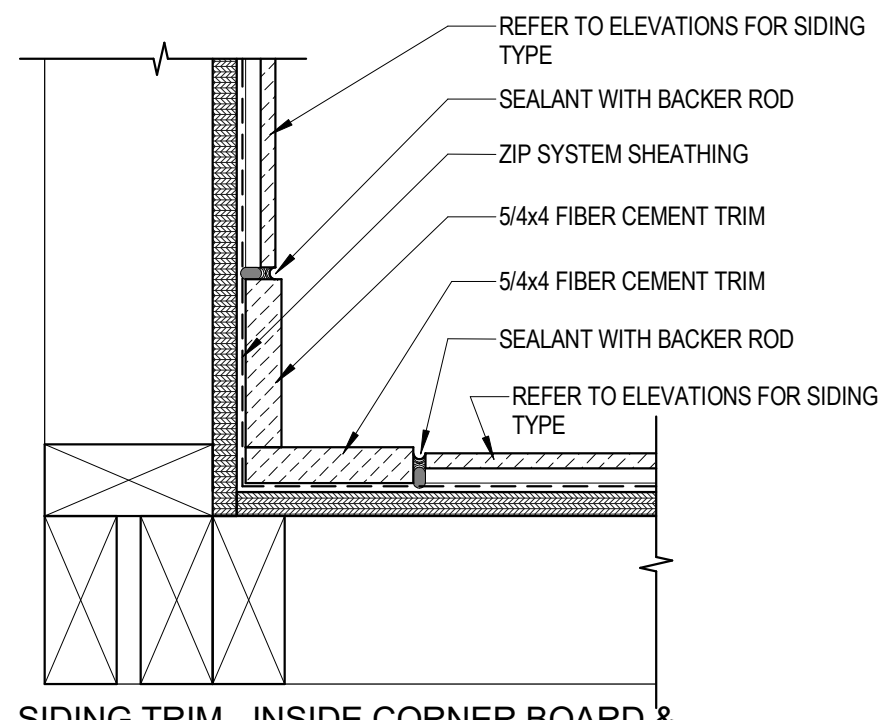
25 CURB AT GARAGE  
3" = 1'-0"



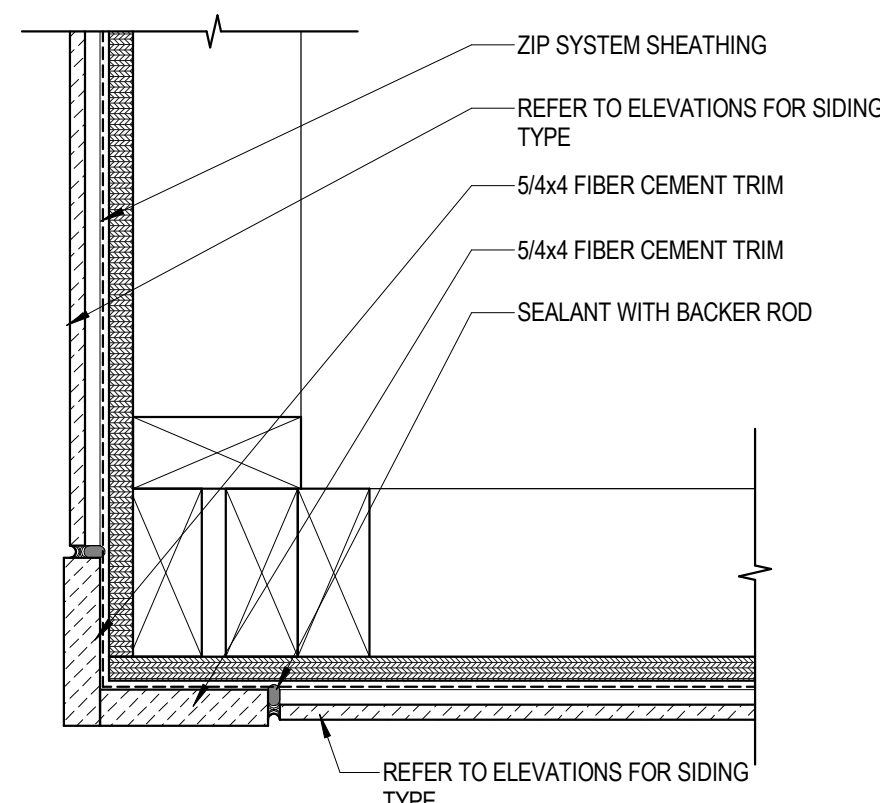
10 RIDGE VENT DETAIL  
3" = 1'-0"



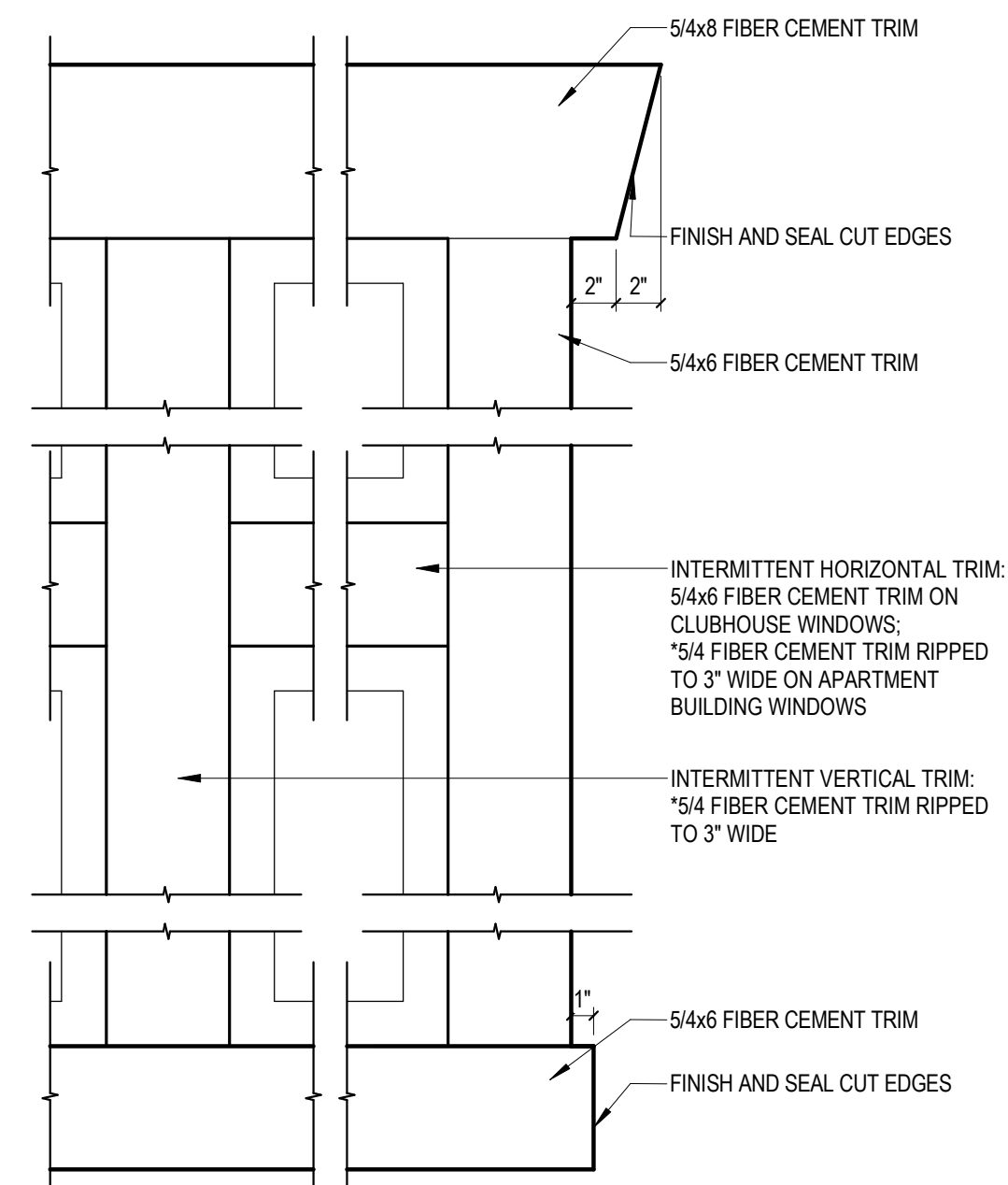
9 STONE AT OUTSIDE CORNER  
3" = 1'-0"



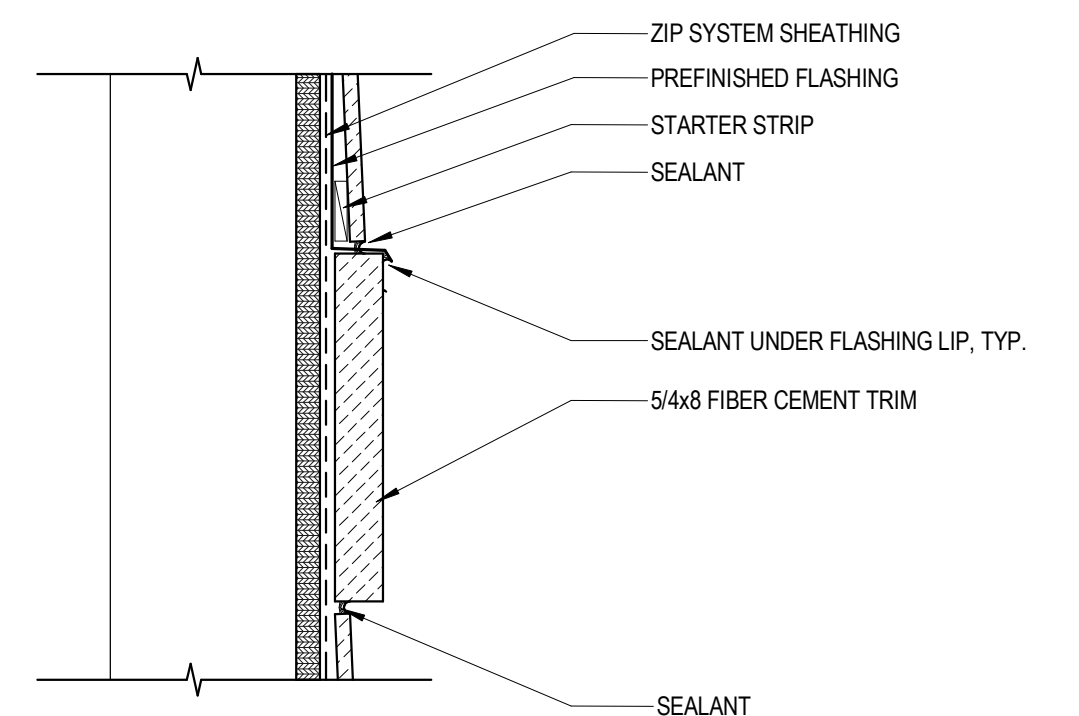
8 SIDING TRIM - INSIDE CORNER BOARD & BATTEN / LAP  
3" = 1'-0"



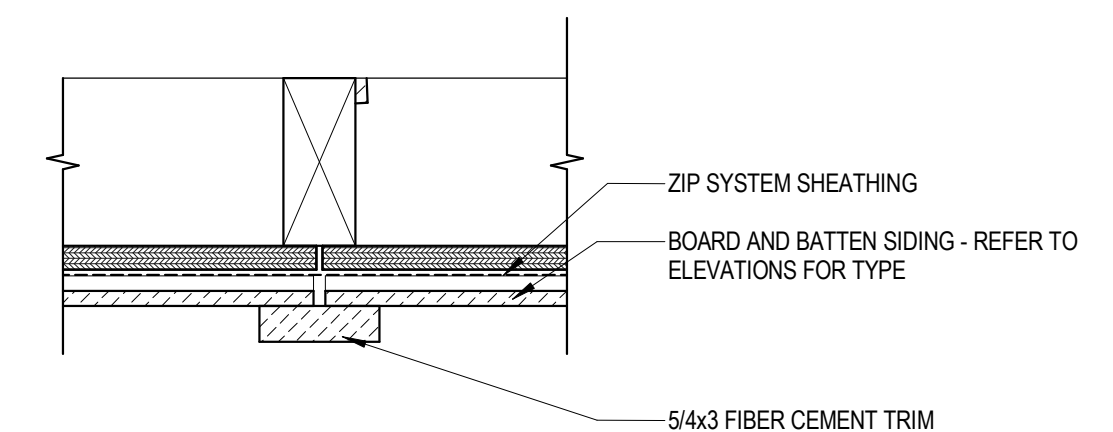
7 SIDING TRIM AT OUTSIDE CORNER  
3" = 1'-0"



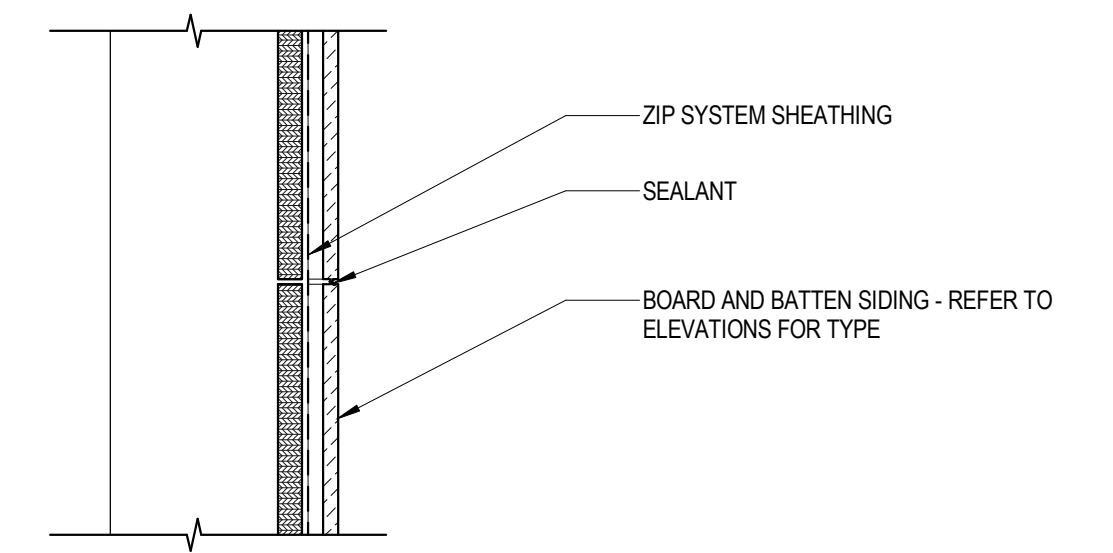
2 FIBER CEMENT WINDOW/DOOR TRIM ELEVATION DETAIL  
1 1/2" = 1'-0"



AT HORIZONTAL FIBER CEMENT TRIM



AT BOARD AND BATTEN VERTICAL SEAM



AT BOARD AND BATTEN/STUCCO PANEL HORIZONTAL SEAM

1 TYPICAL FIBER CEMENT JOINT DETAILS  
3" = 1'-0"

Revisions

BID / PERMIT SET

Drawing Date  
JANUARY 31, 2018

ALL BUILDINGS

SPRINGS AT HAMMOCK COVE  
THOMASSON DR. & CARDINAL WAY  
NAPLES, FL 34112

Project No.  
216026.04

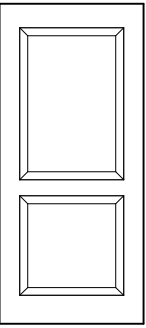
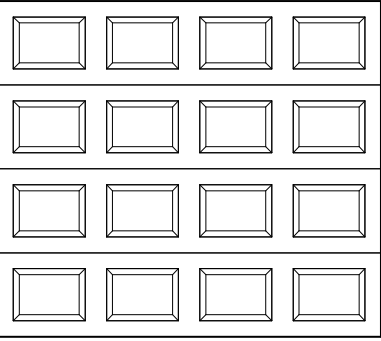
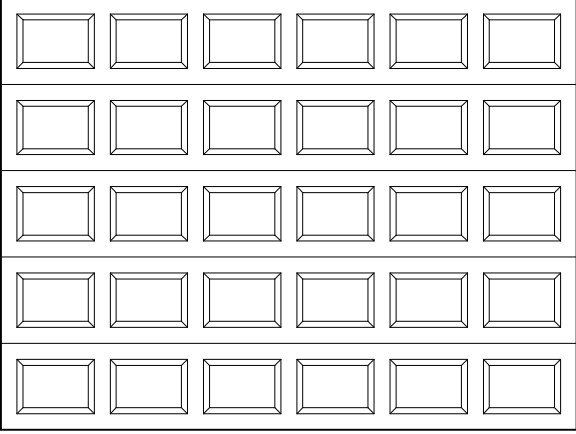
Sheet Title  
**EXTERIOR DETAILS -  
TYPICAL AND TRIM &  
JOINT DETAILS**

Copyright © 2018 Kahler Slater, Inc. All rights reserved.  
111 West Wisconsin Avenue, Milwaukee, Wisconsin 53203  
Telephone 414.272.2000 Fax 414.272.2001

44 East Mifflin Street, Suite 700, Madison, Wisconsin 53703  
Telephone 608.283.6300 Fax 608.283.6317

Sheet No.

**A5.01**

DOOR ELEVATIONS - ACCESSORY BUILDINGS		
DOORS	OVERHEAD DOORS	
		
TYPE 'A' 2 PANEL	TYPE 'G' GARAGE DOOR (INSULATED METAL)	TYPE 'H' GARAGE DOOR (INSULATED METAL)

ACCESSORY BUILDING DOOR SCHEDULE									
DOOR TAG	DOORS			DOOR MATERIAL	DOOR HARDWARE SET	DETAILS			REMARKS
	WIDTH	HEIGHT	TYPE			HEAD	JAMB	SILL	
G01	8'-0"	7'-0"	G	INSUL. METAL	HW SET 6	SEE SHEET A5.31			1, 3
M01	3'-0"	7'-0"	A	INSUL. METAL	HW SET 1	SEE SHEET A5.31			2
M02	3'-0"	7'-0"	A	WOOD	HW SET 2	SEE SHEET A5.31			
M03	8'-0"	7'-0"	G	INSUL. METAL	HW SET 5	SEE SHEET A5.31			1
M04	12'-0"	9'-0"	H	INSUL. METAL		SEE SHEET A5.31			1
M05	6'-0"	7'-0"	A	INSUL. METAL	HW SET 1	SEE SHEET A5.31			2
T01	12'-2"	8'-6"	SEE ELEV.	WOOD GATE	HW SET 3	SEE SHEET A1.T.11			COLOR: PPG #ATC-23 SOLEIL
T02	12'-4"	8'-6"	SEE ELEV.	WOOD GATE	HW SET 3	SEE SHEET A1.T.11			COLOR: PPG #ATC-23 SOLEIL
T03	4'-0"	8'-6"	SEE ELEV.	WOOD GATE	HW SET 4	SEE SHEET A1.T.11			COLOR: PPG #ATC-23 SOLEIL
REMARKS: 1. PROVIDE WEATHER STRIPPING 2. SEALED FRAME AND THRESHOLD AT EXTERIOR DOORS 3. ALL GARAGE DOOR CONTROLS TO BE MOUNTED 48" A.F.F. MAX. GARAGE DOOR CONTROLS TO BE LOCATED ON LEFT SIDE OF DOOR. COORDINATE WITH OWNER/ARCHITECT.									

GENERAL HARDWARE NOTES:
A. GENERAL CONTRACTOR SHALL FIELD VERIFY SIZES OF NEW DOORS AND OR SIDELITES PRIOR TO RELEASE OF ORDER
B. INSTALL DOOR, FRAMES AND HARDWARE IN ACCORDANCE WITH MANUFACTURER'S RECOMMENDATIONS AND INSTALLATION INSTRUCTIONS.
C. GENERAL CONTRACTOR TO REVIEW AND COORDINATE ALL HARDWARE REQUIREMENTS INCLUDING LOOKING, KEYING, AND OTHER SECURITY REQUIREMENTS WITH OWNER.
D. GENERAL CONTRACTOR TO COORDINATE AND INSTALL ALL HARDWARE INCLUDING BUT NOT LIMITED TO LOCKSETS, LATCHSETS, CLOSERS, HINGES, STOPS, ETC. STYLE: AS SELECTED BY OWNER. COLOR/FINISH: BRUSHED NICKEL. INSTALL LEVER TYPE HANDLES AT ALL CLUBHOUSE INTERIOR AND EXTERIOR DOORS. ALL APARTMENT AND STAIR EXTERIOR DOORS, MAINTENANCE BUILDING, AND INSIDE ALL ACCESSIBLE APARTMENT UNITS. INSTALL KNOB TYPE HANDLES IN ALL OTHER APARTMENT UNITS.
E. INSTALL FULL PERIMETER WEATHERSTRIPPING AND THRESHOLDS AT ALL EXTERIOR DOORS, ENTRY, PATIO, STAIRS, AND GARAGE.
F. CAULK AND SEAL AROUND FRAMES.
G. PROVIDE DOOR BELLS AT ADA APARTMENT ENTRY DOORS.
H. PROVIDE FIRE RATED DOOR AND FRAME ASSEMBLIES WHERE REQUIRED BY CODE.
I. ALL INTERIOR DOORS TO BE PREFINISHED, COLOR: WHITE.
J. ALL ACCESS CONTROL DOORS SHALL COMPLY WITH IFC 1008.1.9.8

HARDWARE SETS: ACCESSORY BUILDINGS
HW SET 1 (MAINTENANCE BUILDING) A. 3.0 BUTT HINGES B. 1.0 ENTRY LOCKSET w/ LEVER HANDLES C. 1.0 SET OF WEATHERSTRIPPING AND DOOR BOTTOM GASKET SEAL D. 1.0 THRESHOLD
HW SET 2 (BATHROOM DOOR) A. 3.0 HINGES (BY PRE-HUNG SUPPLIER) B. 1.0 PRIVACY LOCKSET w/ LEVER HANDLES C. 1.0 DOOR STOP OR HINGE PIN STOP
HW SET 3 (GATE HARDWARE- DOUBLE) A. 2.0 CONTINUOUS NON-CORROSIVE HINGES B. 2.0 CARRIAGE STYLE DECORATIVE HARDWARE (PULLS MOUNTED NO HIGHER THAN 48" ABOVE SLAB) C. 2.0 1/2" Ø CANE BOLT(S) (TOP OF OPERATION SHALL BE 48" MAX.) IN PIPED SLEEVES IN CONCRETE
HW SET 4 (GATE HARDWARE - SINGLE) A. 1.0 CONTINUOUS NON-CORROSIVE HINGES OR HEVAY DUTY STYLE HINGES B. 1.0 CARRIAGE STYLE DECORATIVE HARDWARE (PULLS MOUNTED NO HIGHER THAN 48" ABOVE SLAB) C. 1.0 1/2" Ø CANE BOLT(S) (TOP OF OPERATION SHALL BE 48" MAX.) IN PIPED SLEEVES IN CONCRETE
HW SET 5 (MAINTENANCE GARAGE) A. LIFTMASTER CONTRACTOR SERIES 8165 1/2HP CHAIN DRIVE w/ STANDBY POWER B. 882LM CONTROL PANEL C. THREE (3) REMOTES D. WEATHERPROOF EXTERIOR KEYPAD E. SEE OVERHEAD DOOR ASSEMBLIES BELOW F. BATTERY BACKUP POWER
HW SET 6 (DETACHED GARAGE DOORS) A. GARAGE DOOR OPENER (LIFTMASTER MODEL No. 8365-267 w/ 1/2 HP AC OR EQUIVALENT B. KEYPAD (LIFTMASTER 877LM) INSTALL KEYPAD ON FACE OF LEFT GARAGE JAMB. TOP OF KEYPAD TO BE INSTALLED 48" A.F.F. MAX. - COORDINATE WITH OWNER & ARCHITECT
OVERHEAD DOOR ASSEMBLIES:
1. OVERHEAD DOORS SHALL BE RAYNOR, TRADITIONS MASTERPIECE, COLONIAL STYLE.
2. DOOR SPECS • 2" THICK 24 GAUGE MIN. STEEL BOTH SIDES • FOAM IN-PLACE PLURETHANE INSULATION • PERIMETER WEATHER STRIPPING AND DOOR BOTTOM SEALS • ALL HARDWARE, TRACK, AND SPRINGS • ELECTRIC DOOR OPENER AND CONTROLS • TWO (2) REMOTES • EMERGENCY KEYED ACCESS CONTROL • PAINT COLOR AS INDICATED BY EXTERIOR FINISH SCHEDULE

EXTERIOR FINISH COLORS	
ALUMINUM GATE FENCE	PRE-FINISHED - BLACK
BOLLARD	SW #7006 "EXTRA WHITE"
COLUMN WRAP	SW #7006 "EXTRA WHITE"
ENTRY DOORS	SW #6222 "RIVERWAY" AT CLUBHOUSE SW #7067 "CITYSCAPE"
EXTERIOR CEILING	PRE-FINISHED - COLONIAL WHITE
FASCIA	SW #7006 "EXTRA WHITE"
GARAGE DOOR	SW #7066 "GRAY MATTERS"
GUTTERS / DOWNSPOUTS	PRE-FINISHED - WHITE
MORTAR	MATCH STONE COLOR (ANTIQUE BUFF)
SHINGLES	CONCRETE ROOFING TILE- SEE OWNERS FINISH SCHEDULE
SIDING COLOR A	SW #7066 "GRAY MATTERS"
SIDING COLOR B	SW #9163 "TIN LIZZIE"
SIDING COLOR C	SW #7065 "TARGOS"
SIDING COLOR D	SW #7067 "CITYSCAPE"
SOFFIT	PRE-FINISHED - COLONIAL WHITE
STONE 1	CORONADO STONE, CARIBBEAN CORAL S411
STONE SILLCAP	NATURAL
TRIM	SW #7006 "EXTRA WHITE"
WOODEN GATE	SW #7006 "EXTRA WHITE"



Revisions

BID / PERMIT SET

Drawing Date  
JANUARY 31, 2018

ACCESSORY BUILDINGS

SPRINGS AT HAMMOCK COVE  
THOMASSON DR. & CARDINAL WAY  
NAPLES, FL 34112

Project No.  
216026.04

Sheet Title

DOOR TYPES AND SCHEDULES - ACCESSORY BUILDINGS

Copyright © 2018 Kahler Slater, Inc. All rights reserved.

111 West Wisconsin Avenue, Milwaukee, Wisconsin 53203  
Telephone 414.272.2000 Fax 414.272.2001

44 East Mifflin Street, Suite 700, Madison, Wisconsin 53703  
Telephone 608.283.6300 Fax 608.283.6317

Sheet No.

A6.03