

LEGEND	
FCP	FIRE ALARM PANEL SK 5808
PS1	POWER SUPPLY
③	SK SMOKE DETECTOR SINGLE GANG / OCTAGON
④	HEAT DETECTOR SINGLE GANG / OCTAGON
F	PULL STATION @ 46"
R	SK RELAY 4 SQUARE DEEP BOX
MD	MONITOR MODULE DUAL 4 SQUARE DEEP BOX
FL	FLOW SWITCH *BY OTHERS*
T	TAMPER SWITCH *BY OTHERS*
⊗	HORN STROBE SYSTEM SENSOR SRK @ 86"
⊖	STROBE SYSTEM SENSOR SRK @ 86"
⊕	MINI HORN LOW FREQUENCY 90° LOW FREQUENCY
WP	WEATHERPROOF
E	ELEVATOR

LEGEND	
FCP	FIRE ALARM PANEL SK 5808
PS1	POWER SUPPLY
③	SK SMOKE DETECTOR SINGLE GANG / OCTAGON
④	HEAT DETECTOR SINGLE GANG / OCTAGON
F	PULL STATION @ 46"
R	SK RELAY 4 SQUARE DEEP BOX
MD	MONITOR MODULE DUAL 4 SQUARE DEEP BOX
FL	FLOW SWITCH *BY OTHERS*
T	TAMPER SWITCH *BY OTHERS*
⊗	HORN STROBE SYSTEM SENSOR SRK @ 86"
⊖	STROBE SYSTEM SENSOR SRK @ 86"
⊕	MINI HORN LOW FREQUENCY 90° LOW FREQUENCY
WP	WEATHERPROOF
E	ELEVATOR

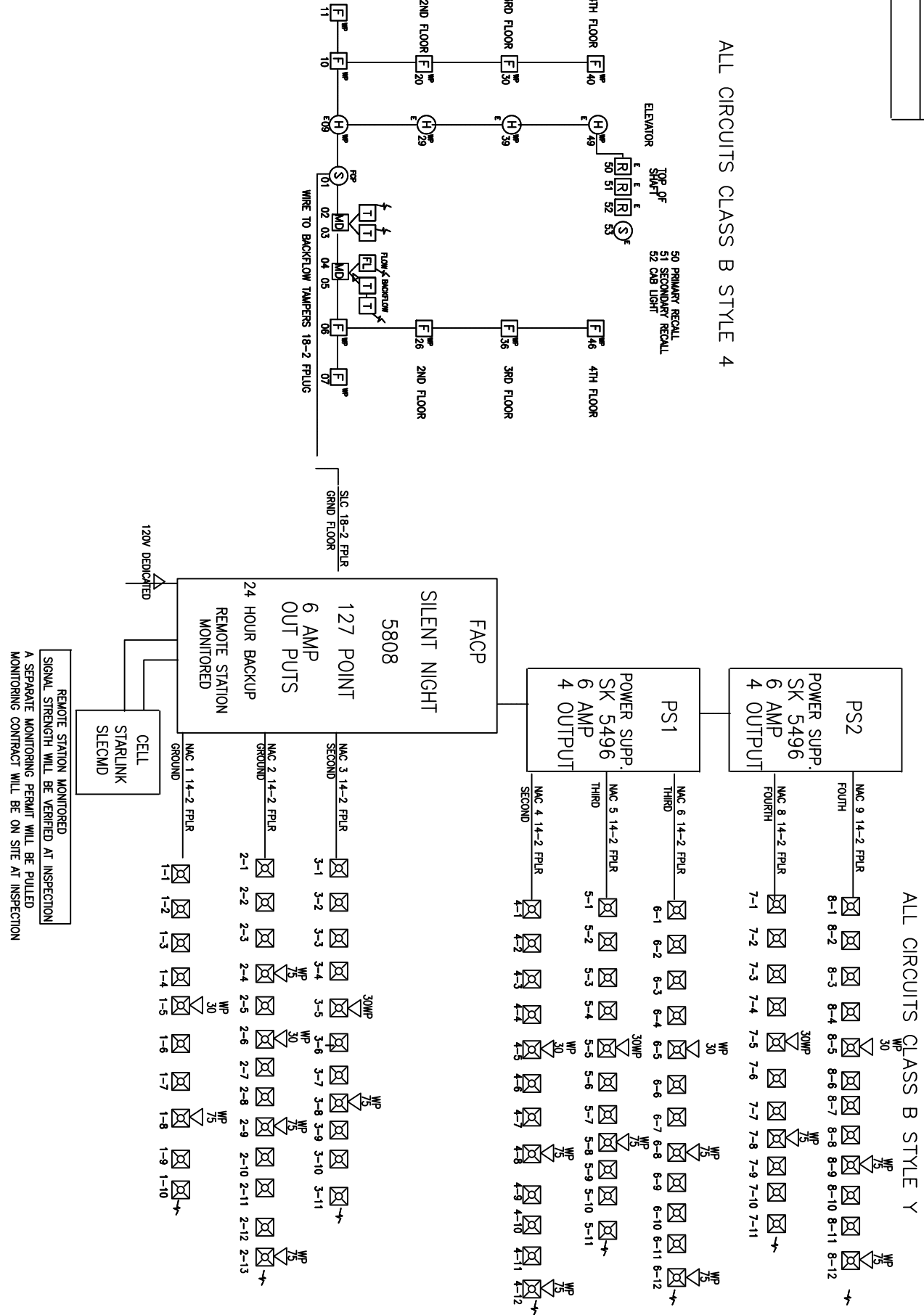
**SCOPE**

THE STRUCTURE IS A SPRINKLED FOUR STORY 32 UNIT MULTIFAMILY. A FULL FIRE ALARM WILL BE INSTALLED. THE FIRE ALARM PANEL WILL BE A SILENT NIGHT 5808 ADDRESSABLE. IT HAS A 127 POINT MONITORING DEVICES WITH 6 AMPS OF POWER AND FOUR OUTPUTS WILL BE INSTALLED NEXT TO IT. HORN'S STROBES, STROBES, LOW FREQUENCY HORN HORN, PULL STATIONS, SMOKE DETECTORS AND HEAT DETECTORS FOR ELEVATOR RECALL WILL BE INSTALLED. LOW AND TAMPER SWITCHES WILL BE USED AND MORE WILL BE 18-2 PULL, 1-2 PULL AND 18-2 TAMPER. TAMPER SWITCHES WILL BE USED AT EACH DEVICE. BATTERY BACKUP WILL BE 24 HOUR STANDBY WITH 5 MINUTES OF RECHARGE TO BE PULSED BY THE FIRE ALARM CONTROLLER. THE SYSTEM WILL BE REMOTE STATION MONITORED DESIGNED PER THE 2010 FLORIDA BUILDING CODE. THE 5TH EDITION EDITION OF THE FLORIDA FIRE PREVENTION CODE, NFPA 72, AND LIFE SAFETY 701. THE SELECTED FIRE ALARM CONTROLLER WILL BE REQUIRED TO TEST THE STATION, OPERATING MANUALS AND A SYSTEM AS BUILT DESIGN MUST BE LEFT AT THE TFP UPON COMPLETION. THE OWNER WILL BE REQUIRED TO CONTRACT WITH A LICENSED / ASSURED MONITORING COMPANY AND WILL HAVE TO CONTRACT WITH A FIRE ALARM CONTROLLER TO PERSONAL MANAGE THE ALARM INSPECTIONS ON THE FIRE SYSTEM.

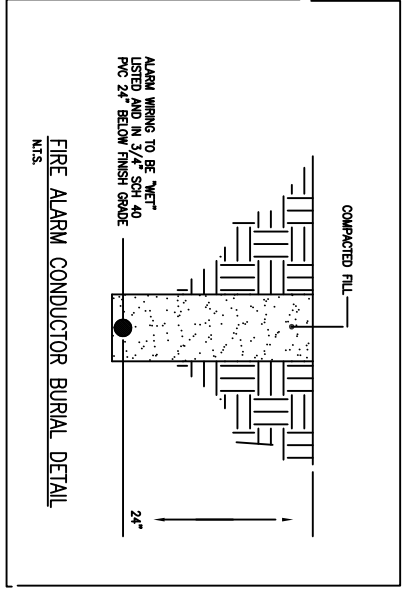
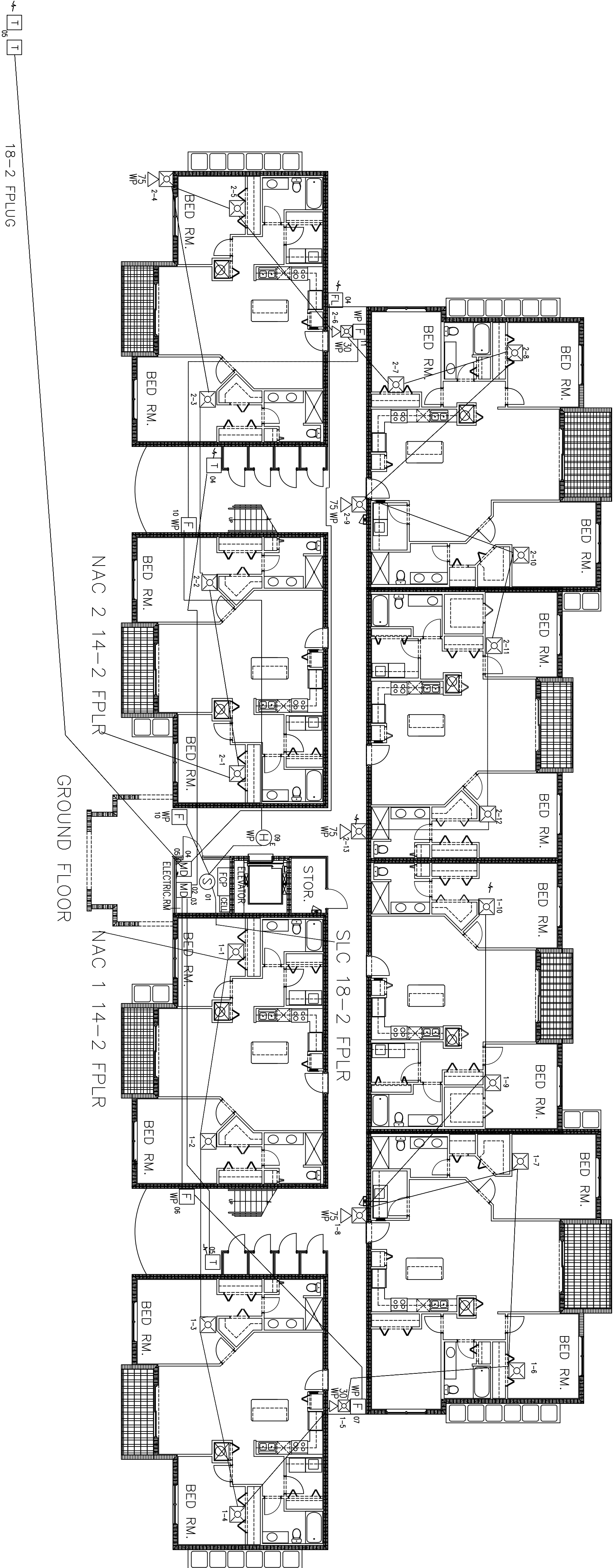
**SEQUENCE OF OPERATION**

THE FOLLOWING SEQUENCE OF OPERATION SHALL INITIATING DEVICE SHALL AUTOMATICALLY INITIATE THE FOLLOWING SEQUENCE OF OPERATION:

1. ACTIVATION OF AN ELEVATOR, HEAT, FLOW OR SMOKE DETECTOR.
2. SHALL INITIATE THE FOLLOWING SEQUENCE OF OPERATION:
- A. CALLS AN AUDIBLE SIGNAL AT THE CONTROL PANEL.
- B. CALLS AN AUDIBLE SIGNAL AT THE CONTROL PANEL.
- C. THE TRANSMITTER WILL NOTIFY THE MONITORING STATION. THE MONITORING STATION WILL NOTIFY THE APPROPRIATE FIRE DEPARTMENT.
3. ACTIVATION OF TAMPER SWITCH WILL INITIATE THE FOLLOWING:
- A. INDICATE A TAMPED CONDITION AT THE FACP.
- B. THE TRANSMITTER WILL NOTIFY THE MONITORING STATION. THE MONITORING STATION WILL NOTIFY THE CUSTOMER AND RESPONDING TECH.
4. INDICATE A TAMPED CONDITION AT THE FACP.
5. THE TRANSMITTER WILL NOTIFY THE MONITORING STATION. THE MONITORING STATION WILL NOTIFY THE CUSTOMER AND RESPONDING TECH.



Approval subject to field  
inspector verification.  
Additional corrections may  
be required for compliance  
with prevailing codes.



MONITORING PERMIT