

FLORIDA DEPARTMENT OF
Business & Professional Regulation



DBPR HOME ABOUT DBPR DBPR DIVISIONS CONTACT DBPR

BCIS Home | Log In | User Registration | Hot Topics | Submit Surcharge | Stats & Facts | Publications | FBC Staff | BCIS Site Map | Links | Search |



Product Approval
USER: Public User

[Product Approval Menu](#) > [Product or Application Search](#) > [Application List](#) > **Application Detail**

OFFICE OF THE
SECRETARY

FL #	FL8786-R8												
Application Type	Revision												
Code Version	2014												
Application Status	Approved												
Comments													
Archived	<input type="checkbox"/>												
Product Manufacturer	Kawneer Company, Inc.												
Address/Phone/Email	555 Guthridge Court Norcross, GA 30092 (770) 840-6426 tanya.dolby@alcoa.com												
Authorized Signature	Tanya Dolby tanya.dolby@alcoa.com												
Technical Representative	Tanya A. Dolby												
Address/Phone/Email	555 Guthridge Court Norcross, GA 30092 (770) 840-6426 tanya.dolby@alcoa.com												
Quality Assurance Representative	Mr. Scott Near												
Address/Phone/Email	500 East 12th Street Bloomsburg, PA 17815 (570) 784-8000 scott.near@alcoa.com												
Category	Exterior Doors												
Subcategory	Swinging Exterior Door Assemblies												
Compliance Method	Evaluation Report from a Florida Registered Architect or a Licensed Florida Professional Engineer <input checked="" type="checkbox"/> Evaluation Report - Hardcopy Received												
Florida Engineer or Architect Name who developed the Evaluation Report	W.W. Schaefer												
Florida License	PE-44135												
Quality Assurance Entity	Architectural Testing, Inc.												
Quality Assurance Contract Expiration Date	12/31/2018												
Validated By	Terrence E. Lunn, PE <input checked="" type="checkbox"/> Validation Checklist - Hardcopy Received												
Certificate of Independence	FL8786_R8_COI_certification_of_independence.pdf												
Referenced Standard and Year (of Standard)	<table border="0"> <thead> <tr> <th>Standard</th> <th>Year</th> </tr> </thead> <tbody> <tr> <td>ASTM E1886</td> <td>2005</td> </tr> <tr> <td>ASTM E1996</td> <td>2005</td> </tr> <tr> <td>ASTM E1996</td> <td>2006</td> </tr> <tr> <td>ASTM E330</td> <td>2002</td> </tr> <tr> <td>TAS 201/202/203</td> <td>1994</td> </tr> </tbody> </table>	Standard	Year	ASTM E1886	2005	ASTM E1996	2005	ASTM E1996	2006	ASTM E330	2002	TAS 201/202/203	1994
Standard	Year												
ASTM E1886	2005												
ASTM E1996	2005												
ASTM E1996	2006												
ASTM E330	2002												
TAS 201/202/203	1994												
Equivalence of Product Standards Certified By													

Sections from the Code

Product Approval Method

Method 1 Option D

Date Submitted 07/13/2016
Date Validated 07/18/2016
Date Pending FBC Approval 07/24/2016
Date Approved 10/13/2016
Date Revised 09/30/2017

Summary of Products

FL #	Model, Number or Name	Description
8786.1	350 IR 9 ft. Tall Out-Swing Doors	Out-Swing Doors (Large Missile Impact)
Limits of Use Approved for use in HVHZ: Yes Approved for use outside HVHZ: Yes Impact Resistant: Yes Design Pressure: +65/-65 Other: Door size, pressure, assembly and installation requirements are to be as specified in the attached drawing No. 1569. Job required design wind pressure shall be calculated in accordance with the Florida Building Code Chapter 16 and ASCE 7 Minimum Design Loads for Buildings and Other Structures. This door system is rated as a wind zone 4 missile level "D" large missile impact product. All glass meets the requirements of the current ASTM E1300 standard.		Installation Instructions FL8786_R8_II_Drawing 1569.pdf Verified By: W. W. Schaefer, P.E. 44135 Created by Independent Third Party: Yes Evaluation Reports FL8786_R8_AE_Evaluation report WWS-312.pdf Created by Independent Third Party: Yes
8786.2	350/500 IR 8 ft. Tall Out-Swing Dry Glazed Doors	Out-Swing Doors (Large Missile Impact)
Limits of Use Approved for use in HVHZ: Yes Approved for use outside HVHZ: Yes Impact Resistant: Yes Design Pressure: N/A Other: Door size, assembly and installation requirements are to be as specified in the attached drawing No. 1695. Job required design wind pressure shall be calculated in accordance with the Florida Building Code Chapter 16 and ASCE 7 Minimum Design Loads for Buildings and Other Structures. This door system is rated as a wind zone 4 missile level "D" large missile impact product. All glass meets the requirements of the current ASTM E1300 standard.		Installation Instructions FL8786_R8_II_Drawing 1695.pdf Verified By: W. W. Schaefer, P.E. 44135 Created by Independent Third Party: Yes Evaluation Reports FL8786_R8_AE_Evaluation report WWS-311.pdf Created by Independent Third Party: Yes
8786.3	350/500 IR 8 ft. Tall Out-Swing Wet Glazed Doors	Out-Swing Doors (Large Missile Impact)
Limits of Use Approved for use in HVHZ: Yes Approved for use outside HVHZ: Yes Impact Resistant: Yes Design Pressure: N/A Other: Door size, pressure, assembly and installation requirements are to be as specified in the attached drawing No. 1460. Job required design wind pressure shall be calculated in accordance with the Florida Building Code Chapter 16 and ASCE 7 Minimum Design Loads for Buildings and Other Structures. This door system is rated as a wind zone 4 missile level "D" large missile impact product. All glass meets the requirements of the current ASTM E1300 standard.		Installation Instructions FL8786_R8_II_Drawing 1460.pdf Verified By: W.W. Schaefer, P.E. 44135 Created by Independent Third Party: Yes Evaluation Reports FL8786_R8_AE_Evaluation report WWS-310.pdf Created by Independent Third Party: Yes

[Back](#) [Next](#)

[Contact Us](#) :: 2601 Blair Stone Road, Tallahassee FL 32399 Phone: 850-487-1824

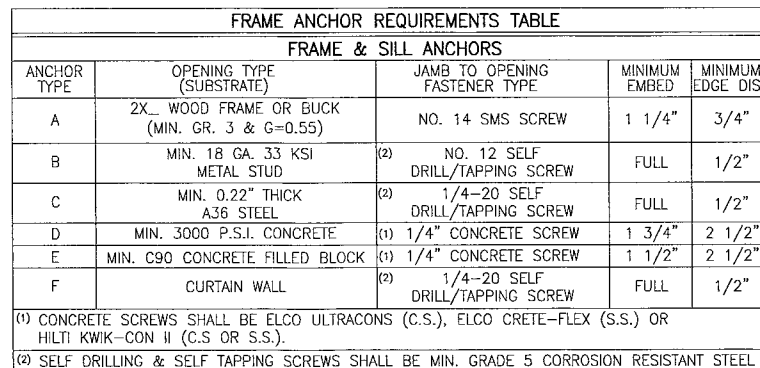
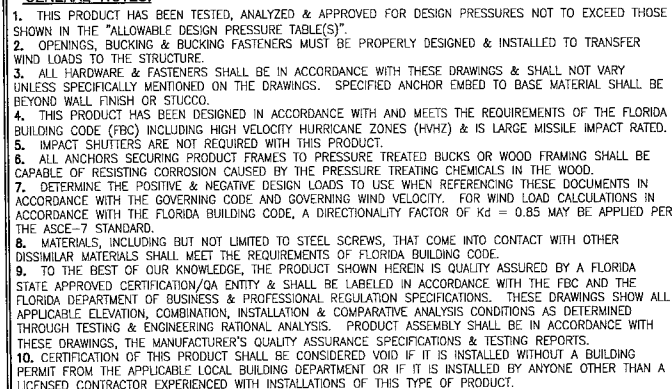
The State of Florida is an AA/EEO employer. [Copyright 2007-2013 State of Florida](#) :: [Privacy Statement](#) :: [Accessibility Statement](#) :: [Refund Statement](#)

Under Florida law, email addresses are public records. If you do not want your e-mail address released in response to a public-records request, do not send electronic mail to this entity. Instead, contact the office by phone or by traditional mail. If you have any questions, please contact 850.487.1395. *Pursuant to

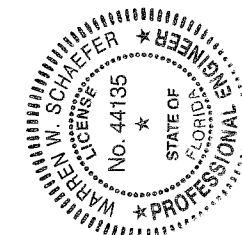
Section 455.275(1), Florida Statutes, effective October 1, 2012, licensees licensed under Chapter 455, F.S. must provide the Department with an email address if they have one. The emails provided may be used for official communication with the licensee. However email addresses are public record. If you do not wish to supply a personal address, please provide the Department with an email address which can be made available to the public. To determine if you are a licensee under Chapter 455, F.S., please click [here](#).

Product Approval Accepts:




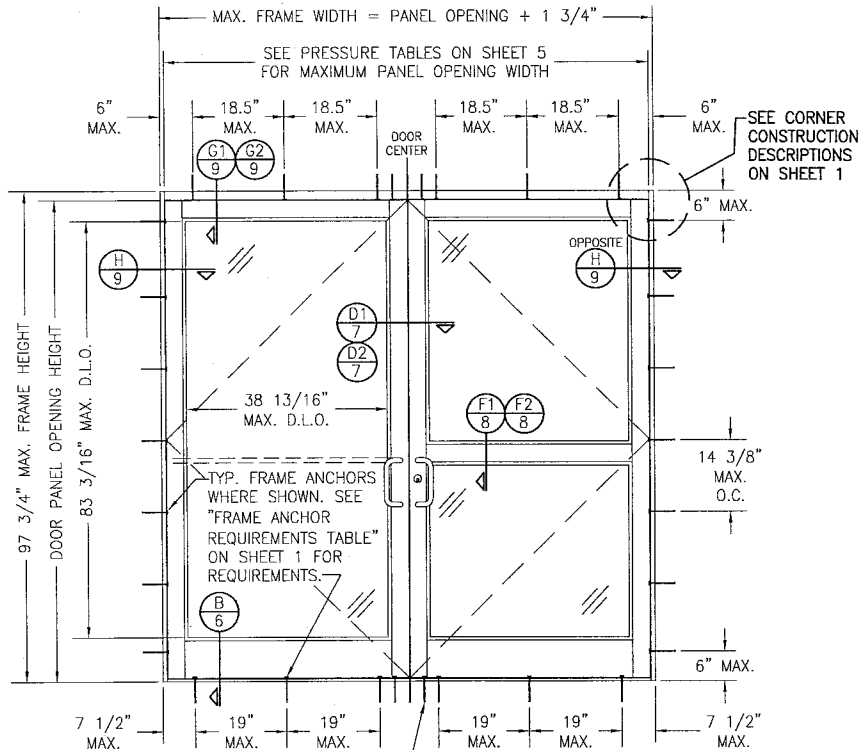


EVALUATION OF THIS PRODUCT IS BASED ON APPLICABLE STANDARDS AND/OR INFORMATION & RESULTS FROM APPLICABLE TEST REPORTS. THE BUILDING CODE VERSION CONSIDERED WITH THIS EVALUATION WAS THAT IN FORCE AT THE TIME OF THE EVALUATION. IN THE EVENT OF CODE VERSION CHANGES/UPDATES OR IN THE EVENT THAT NEW OR ADDITIONAL TESTING IS COMPLETED ON THIS PRODUCT, PRIOR TO STATING CODE COMPLIANCE WITH THE STATE, THE MANUFACTURER SHALL CONFIRM WITH THE EVALUATION ENGINEER OF RECORD THAT EVERYTHING SPECIFIED HERE-IN IS CURRENT WITH ALL CURRENT TESTING, CODES AND APPLICABLE STANDARDS.



THESE DRAWINGS ARE APPLICABLE ONLY TO THE PRODUCT SPECIFIED. THEY MAY NOT BE USED FOR THE ASSEMBLY AND/OR INSTALLATION OF ANY OTHER PRODUCT NOR MAY THEY BE USED FOR RATIONAL AND/OR LOCAL APPROVAL OF ANY PRODUCT NOT PRODUCED BY THE MANUFACTURER STATED ON THESE DRAWINGS.

DRAWING NO. 1695	REV. B	SHEET NO. 13	CERTIFICATION  JUN 28 2016 WARREN P. SCHAEFER, P.E. P.E. NO. 44135	DRAWING TITLE 350/500IR OUTSWING ALUMINUM STOREFRONT DOORS - LMI DRY GLAZED	CONSULTANTS W. W. SCHAEFER ENGINEERING & CONSULTING, P.A. (CA 6809) 7480 150TH COURT NORTH PALM BEACH GARDENS, FL 33418 PHONE: 561-744-3424	MANUFACTURER KAWNEER COMPANY, INC. 555 GUTHRIEDGE COURT NORCROSS, GA 30092 770-449-5555	NO. REVISION DESCRIPTION A1 UPDATE PER NEW TESTING B1 CHANGE TO STATE ONLY APPROVAL	BY WWS WWS	DATE 02/11/14 06/23/16	PLOT: 1=24	DRAWN BY: W.R.M.	CHECKED BY: W.W.S.	DATE: 02/11/11
----------------------------	------------------	------------------------	--	---	--	--	--	------------------	------------------------------	---------------	---------------------	-----------------------	-------------------



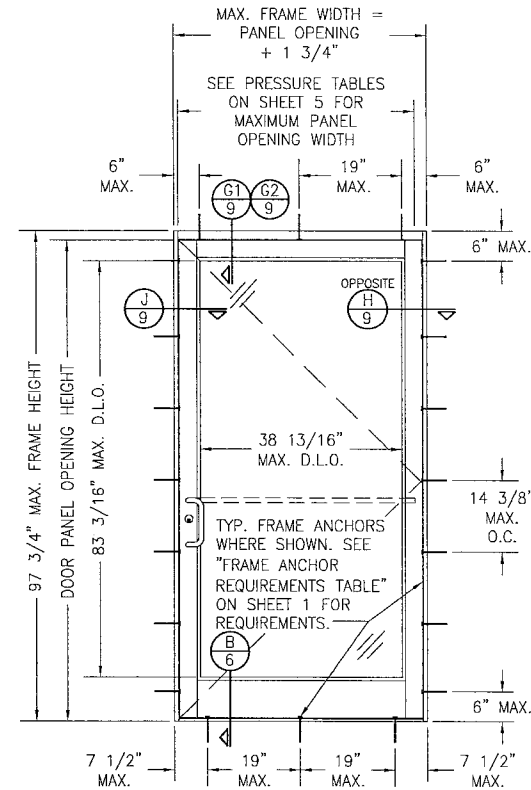
**EXTERIOR ELEVATION:
DOUBLE DOOR WITH TRIFAB 450/451
FRAMING & STANDARD INSTALLATION**

SCALE: 1/2" = 1'-0"

(APPLICABLE WITH ALL HINGE TYPES)

AT HEAD & SILL, CLUSTER ANCHORS AS SHOWN AT MEETING STILE ENDS SPACED 3" APART. CLUSTER 6 ANCHORS WITH ANCHOR TYPE A; CLUSTER 5 ANCHORS WITH ANCHOR TYPES B, C, D & F (ANCHOR "E" IS NOT APPLICABLE AT HEAD & SILL).

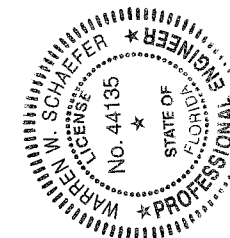
ALLOWABLE DESIGN PRESSURE
SEE SHEET 5



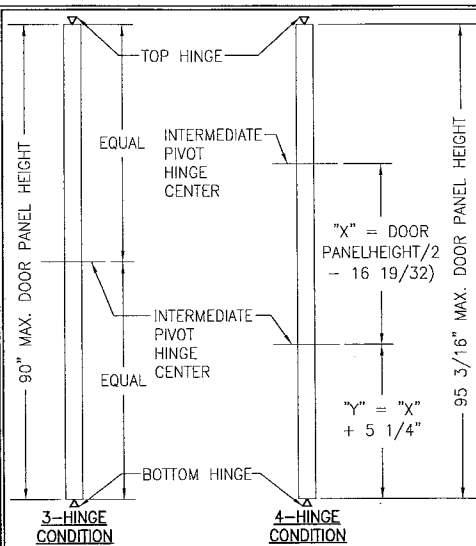
**EXTERIOR ELEVATION:
SINGLE DOOR WITH TRIFAB 450/451
FRAMING & STANDARD INSTALLATION**

SCALE: 1/2" = 1'-0"

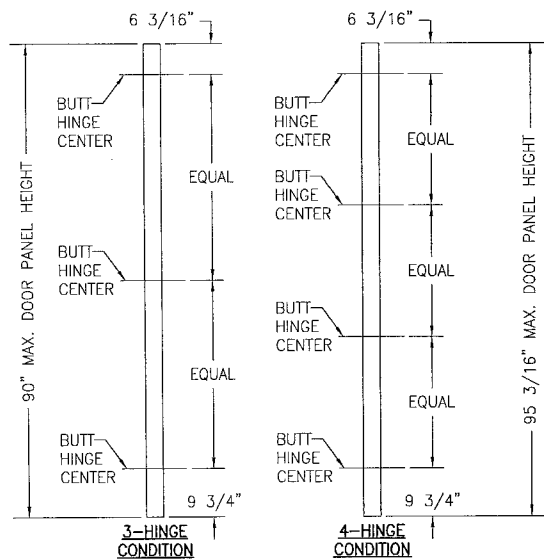
(APPLICABLE WITH ALL HINGE TYPES)



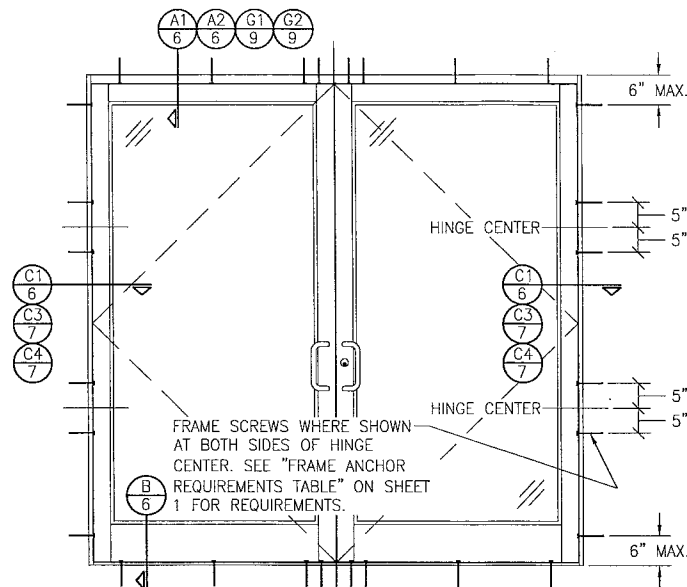
DRAWN BY:	W.R.M.	CHECKED BY:	W.W.S.
PLT:	1-24	DATE:	02/11/11
NO.		REVISION	
DATE		BY	
DESCRIPTION			
<p>DRAWING TITLE: 350/500R OUTSWING ALUMINUM STOREFRONT DOORS - LMI DRY GLAZED</p> <p>CONSULTANTS: W. W. SCHAEFER ENGINEERING & CONSULTING, P.A. (CA 6809)</p> <p>MANUFACTURER: KAWNEER COMPANY, INC. 555 GUTHRIE COURT NORCROSS, GA 30092 770-449-5555</p> <p>7480 150TH COURT NORTH PALM BEACH GARDENS, FL 33418 PHONE 361-744-3424</p>			
CERTIFICATION	<p>JUN 28 2016</p> <p>WARREN W. SCHAEFER, P.E. P.E. NO. 44135</p>		
DRAWING NO.	1695	REV.	B
SHEET NO.	2	OF	13



**PIVOT HINGE
LOCATION DIAGRAMS**
(APPLICABLE TO ALL DOORS)

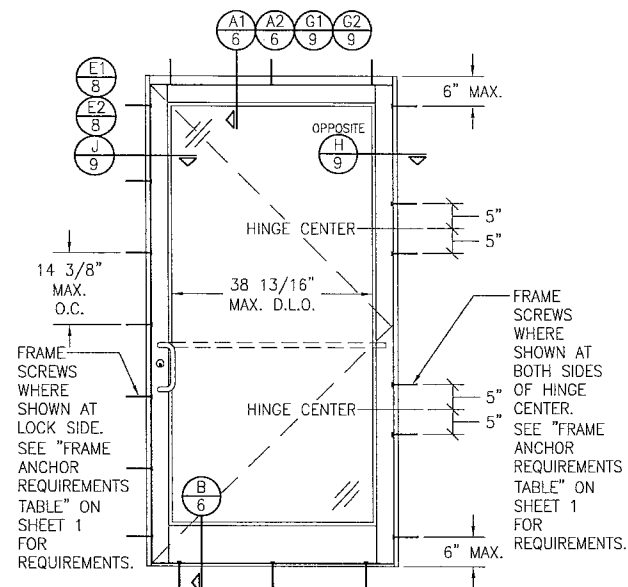


**BUTT HINGE
LOCATION DIAGRAMS**
(APPLICABLE TO ALL DOORS)



**EXTERIOR ELEVATION:
DOUBLE DOOR WITH ALTERNATE
INSTALLATION CONDITION**

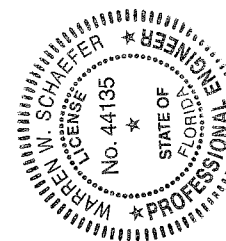
SCALE: 1/2" = 1'-0"
(APPLICABLE WITH BUTT & PIVOT HINGE DOORS ONLY
WHEN 4 HINGES EXIST PER PANEL)
(FOR DOOR DETAIL & HARDWARE NOT SHOWN, SEE
ELEVATIONS ON SHEETS 1 & 2)
(ELEVATION SHOWN WITH STANDARD FRAMING.
STOREFRONT FRAMING ALSO APPLIES)



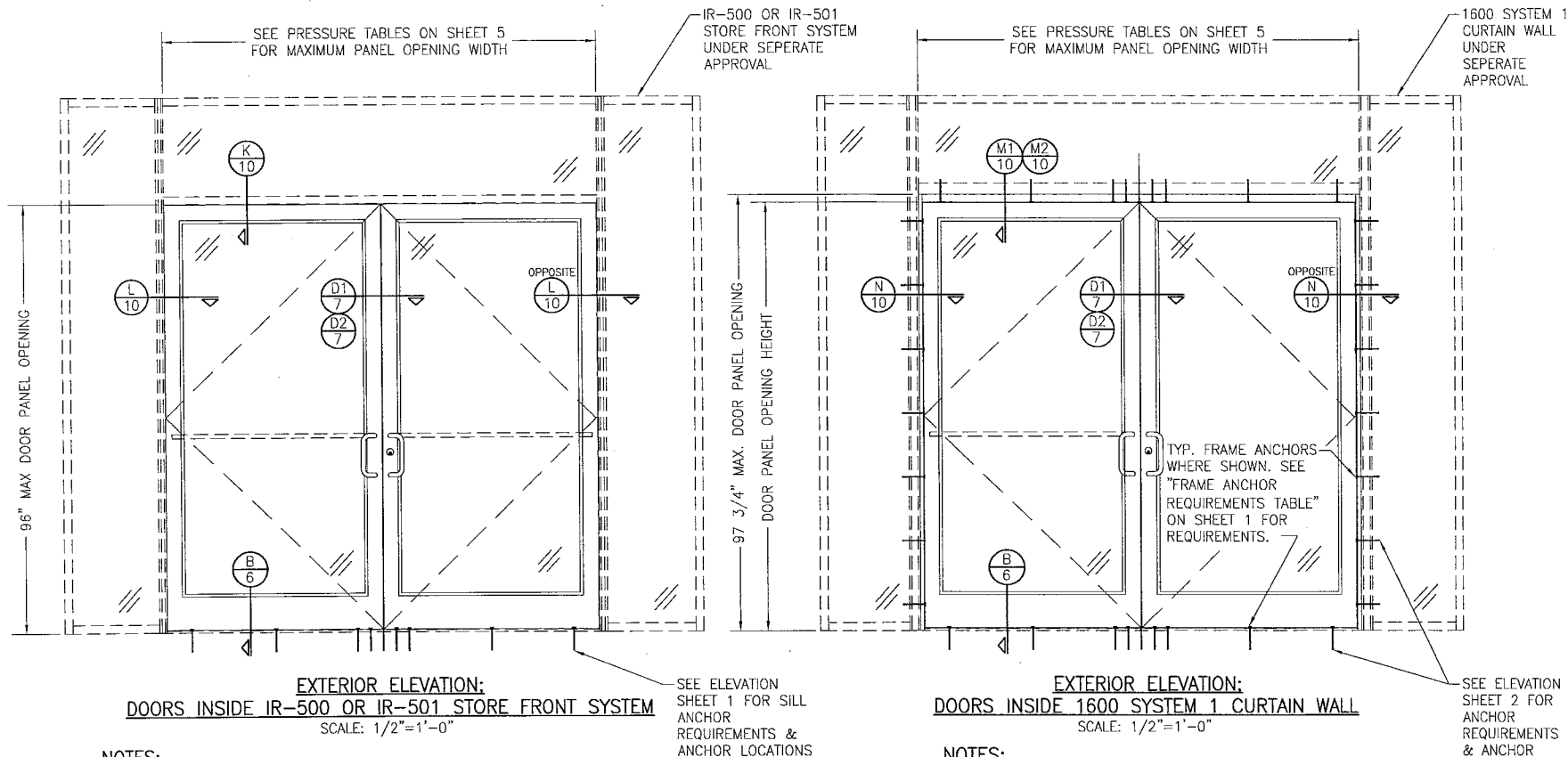
**EXTERIOR ELEVATION:
SINGLE DOOR WITH ALTERNATE
INSTALLATION CONDITION**

SCALE: 1/2" = 1'-0"
(APPLICABLE WITH BUTT & PIVOT HINGE DOORS ONLY
WHEN 4 HINGES EXIST PER PANEL)
(FOR DOOR DETAIL & HARDWARE NOT SHOWN, SEE
ELEVATIONS ON SHEETS 1 & 2)
(ELEVATION SHOWN WITH STANDARD FRAMING.
STOREFRONT FRAMING ALSO APPLIES)

ALLOWABLE DESIGN PRESSURE
SEE SHEET 5



DRAWN BY: W.R.M.	CHECKED BY: W.W.S.
PLT: 1-24	DATE: 02/11/11
DATE	BY
REVISION DESCRIPTION	
NO.	
DRAWING TITLE 350/500R OUTSWING ALUMINUM STOREFRONT DOORS - LMI DRY GLAZED	MANUFACTURER KAWNEER COMPANY, INC. 555 GUTHRIE COURT NORCROSS, GA 30092 770-449-5555
CONSULTANTS W. W. SCHAEFER ENGINEERING & CONSULTING, P.A. (CA 6809) 7480 150TH COURT NORTH PALM BEACH GARDENS, FL 33418 PHONE 561-744-3424	
CERTIFICATION JUN 20 2016 WARREN W. SCHAEFER, P.E. P.E. NO. 44135	
DRAWING NO. 1695	REV. B
SHEET NO. 3	OF 13



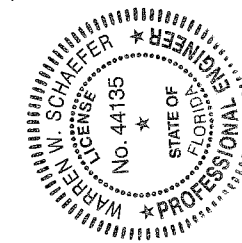
NOTES:

1. FOR DETAILS NOT SHOWN, SEE ELEVATIONS ON SHEETS 1 & 3.
2. DOUBLE DOOR SHOWN; SINGLE DOOR CONDITION ALSO APPLIES.
3. FOR STORE FRONT FRAMING REQUIREMENTS & INSTALLATION, SEE RESPECTIVE STORE FRONT APPROVAL.
4. LESSER ALLOWABLE PRESSURE RATING OF THE DOORS & STOREFRONT SHALL CONTROL FOR THE OVERALL ASSEMBLY.

ALLOWABLE DESIGN PRESSURE
SEE SHEET 5

NOTES:

1. FOR DETAILS NOT SHOWN, SEE ELEVATIONS ON SHEETS 2 & 3.
2. DOUBLE DOOR SHOWN; SINGLE DOOR CONDITION ALSO APPLIES.
3. FOR STORE FRONT FRAMING REQUIREMENTS & INSTALLATION, SEE RESPECTIVE STORE FRONT APPROVAL.
4. LESSER ALLOWABLE PRESSURE RATING OF THE DOORS & STOREFRONT SHALL CONTROL FOR THE OVERALL ASSEMBLY.



DRAWN BY: W.R.M.	CHECKED BY: W.W.S.
PLT: 1=24	DATE: 02/11/11
DATE	BY
REVISION	DESCRIPTION
NO.	
DRAWING TITLE 350/500R OUTSWING ALUMINUM STOREFRONT DOORS - LMI DRY GLAZED	
CONSULTANTS W. W. SCHAEFER ENGINEERING & CONSULTING, P.A. (CA 6809) 7480 150TH COURT NORTH, 33418 PALM BEACH GARDENS, FL 33418 PHONE 561-744-3624	
MANUFACTURER KAWNEER COMPANY, INC. 555 GUTHRIE COURT NORCROSS, GA 30092 770-449-5555	
CERTIFICATION WARREN W. SCHAEFER LICENSE No. 44135 STATE OF FLORIDA PROFESSIONAL ENGINEER	
JUN 28 2016 WARREN W. SCHAEFER, P.E. P.E. NO. 44135	
DRAWING NO. 1695	REV. B
SHEET NO. 4 OF 13	

ALLOWABLE DESIGN PRESSURE (AS RESTRICTED BY PANIC DEVICE LOCK CONDITIONS)

MAXIMUM DOOR PANEL OPENING WIDTH (IN.)		PANIC DEVICE	ALLOWABLE PRESSURE (+/-PSF)
DOUBLE DOOR	SINGLE DOOR		
96	48	SARGENT ADB400	70
		ADAMS RITE G86	
		CALIBRE 9100	
		JACKSON 2086	
		KAWNEER 1686	
		PANELINE CR-90	
96	48	SARGENT 8400	65
72	36	FALCON HH1690	65
96	48	CORBIN RUSSWIN ED5200S(A)	50
96	48	VON DUPRIN HH9947	65

ALLOWABLE DESIGN PRESSURE (AS RESTRICTED BY MULTI-POINT LOCK CONDITIONS)

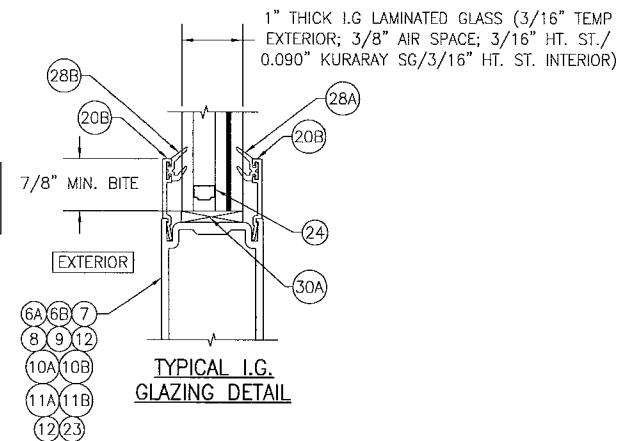
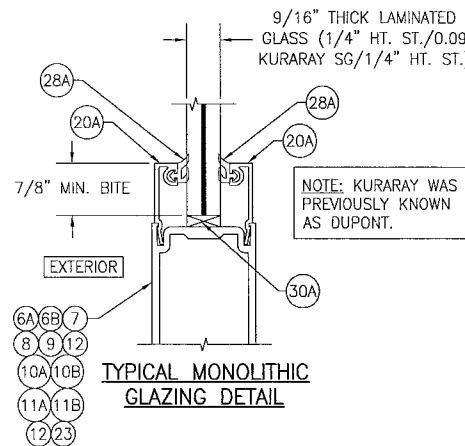
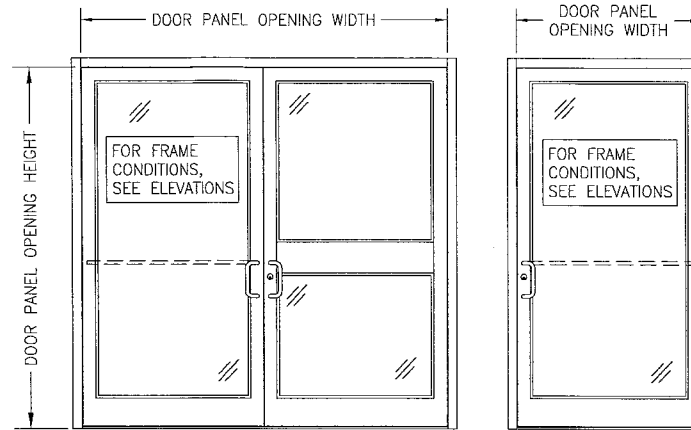
MAXIMUM DOOR PANEL OPENING WIDTH (IN.)		LOCK CONDITION	ALLOWABLE PRESSURE (+/-PSF)
DOUBLE DOOR	SINGLE DOOR		
96	48	1 & 2	70

LOCK CONDITION 1:
ACTIVE DOOR: SEE ITEM #39 ON SHEET 13 FOR LOCK REQUIREMENTS
INACTIVE DOOR: SEE ITEM #40 ON SHEET 13 FOR LOCK REQUIREMENTS

LOCK CONDITION 2:
ACTIVE DOOR: SEE ITEM #41 ON SHEET 13 FOR LOCK REQUIREMENTS
INACTIVE DOOR: SEE ITEM #42 ON SHEET 13 FOR LOCK REQUIREMENTS

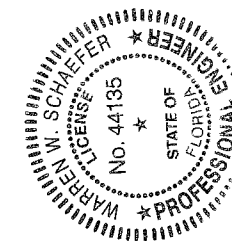
PRESSURE TABLE NOTES (ALL TABLES)

1. CONDITIONS IN THESE TABLES ARE APPLICABLE FOR ALL DOORS TO THEIR MAXIMUM PANEL HEIGHT OF 96".
2. SEE ELEVATIONS ON THIS SHEET FOR VIEW OF DOOR PANEL OPENING HEIGHT & WIDTH.
3. THE LESSER PRESSURE IN ANY ONE TABLE SHALL CONTROL AS THE ALLOWABLE PRESSURE ON THE DOOR ASSEMBLY.

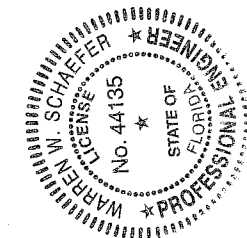
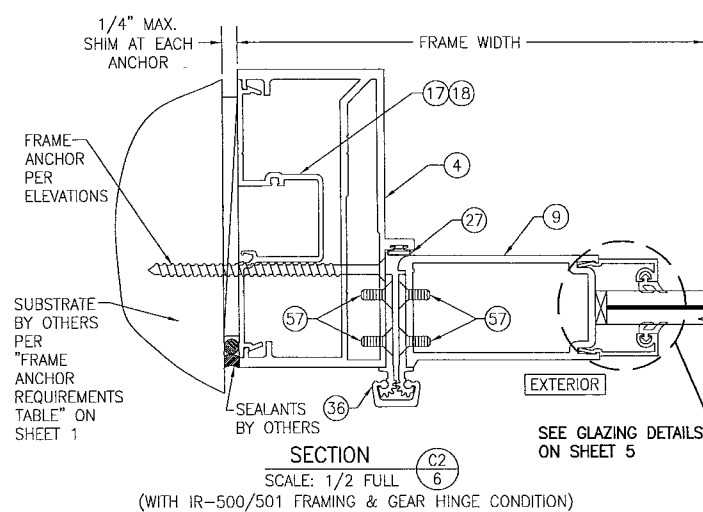
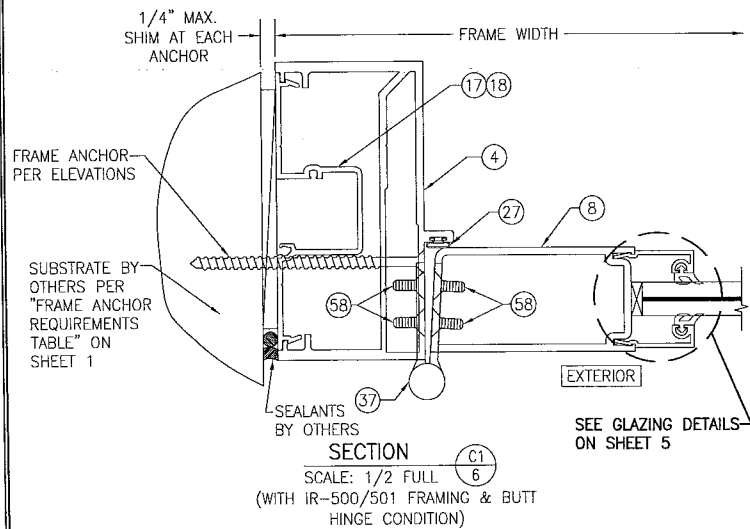
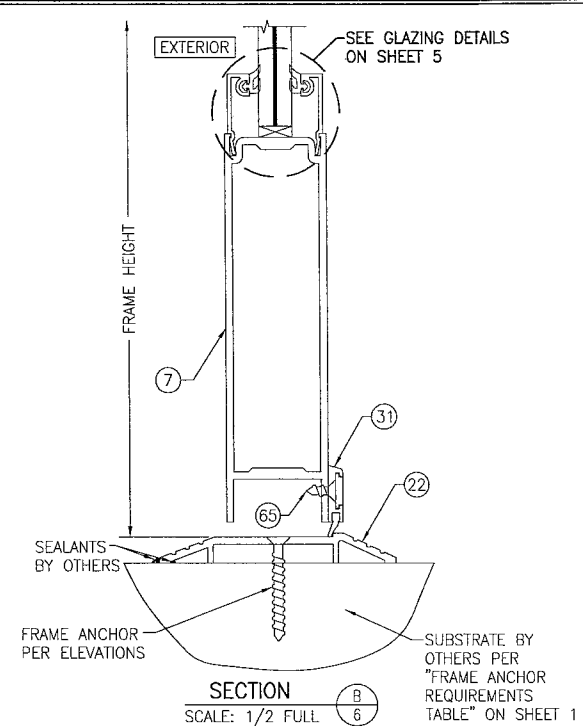
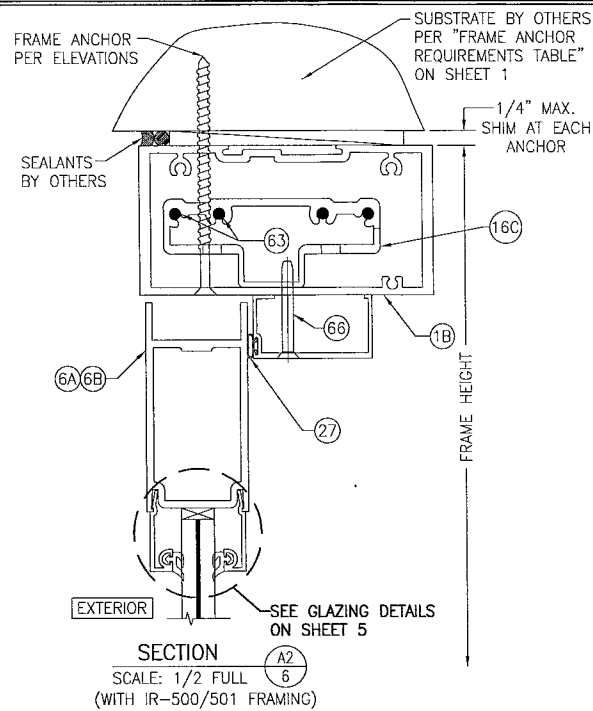
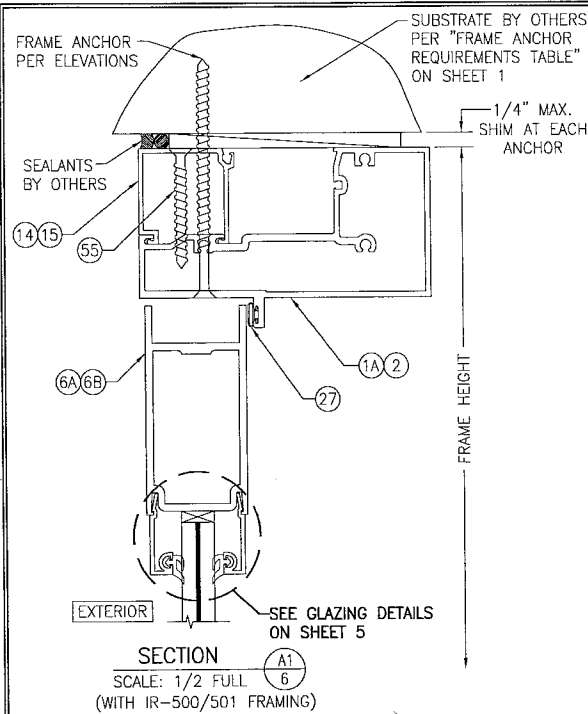


DRAWN BY:	CHECKED BY:
W.R.M.	W.W.S.
PLT:	DATE:
1-24	02/11/11
DATE	BY
NO.	REVISION DESCRIPTION

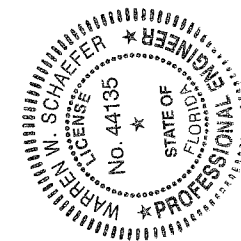
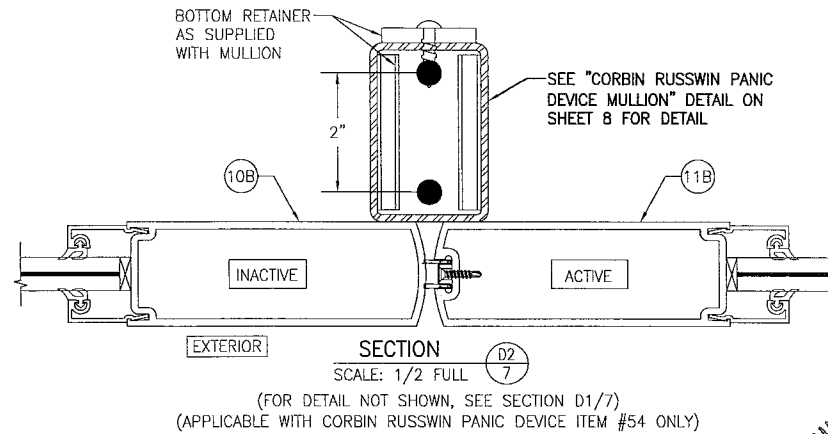
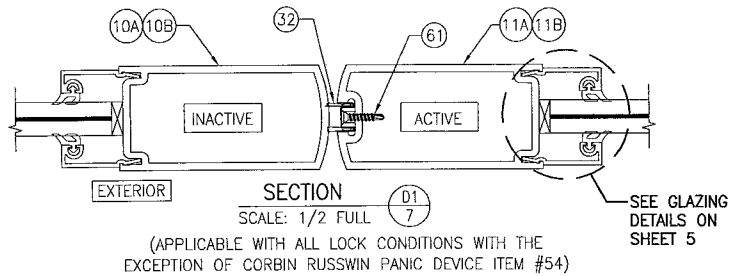
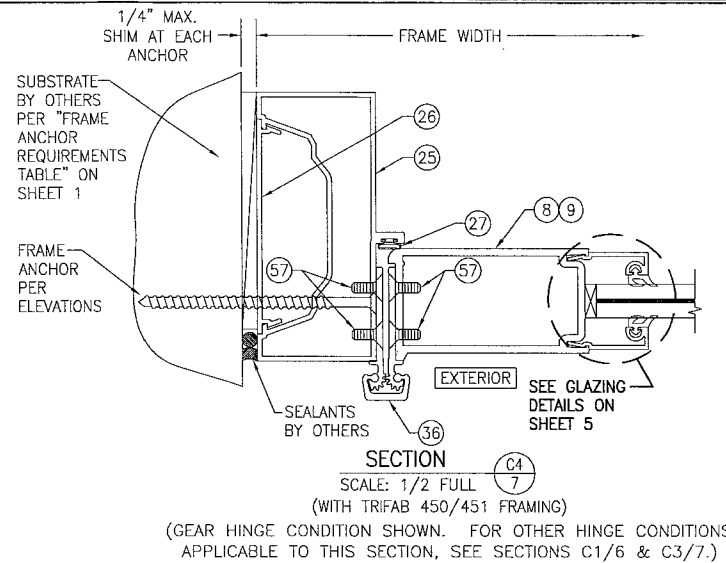
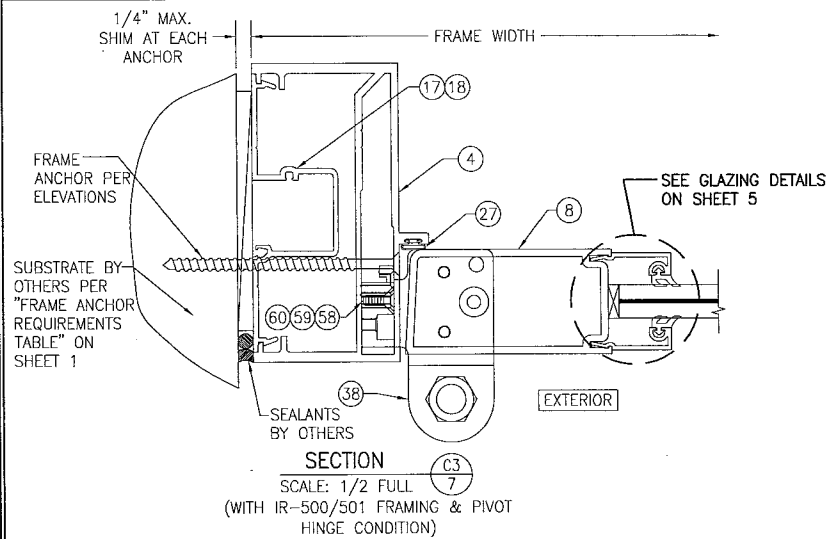
DRAWING TITLE	350/500R OUTSWING ALUMINUM STOREFRONT DOORS
CONSULTANTS	W. W. SCHAEFER ENGINEERING & CONSULTING, P.A. (CA 6809)
MANUFACTURER	KAWNEER COMPANY, INC. 555 GUTHRIE COURT NORCROSS, GA 30092 770-449-5555
7480 SOUTH COUNTRY NORTH PALM BLVD. SUITE 350 NORCROSS, GA 30092 PHONE: 561-744-3424	



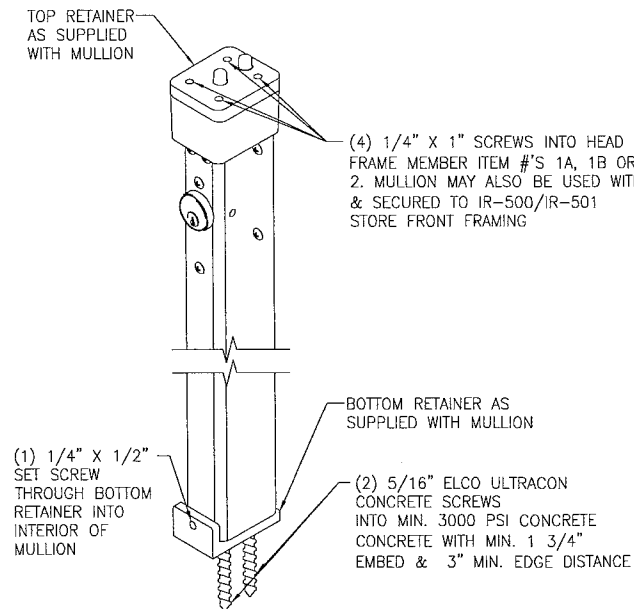
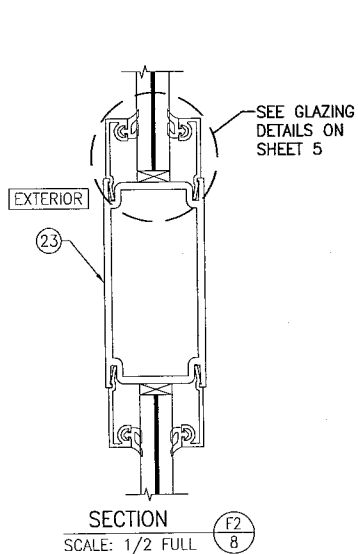
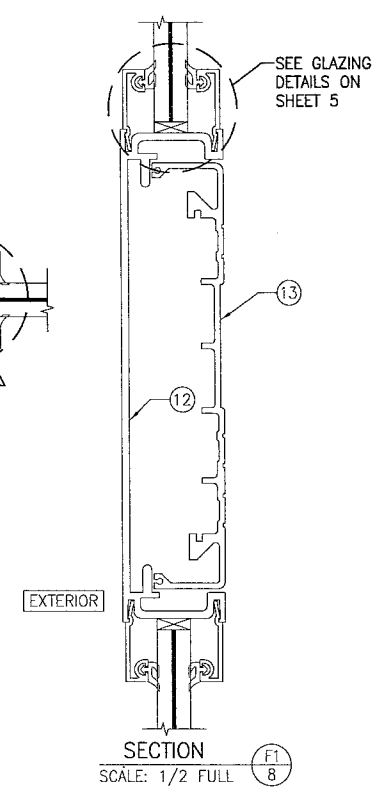
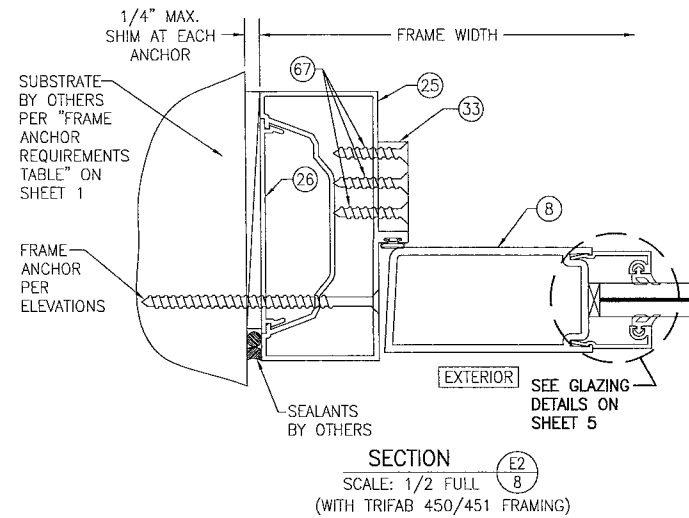
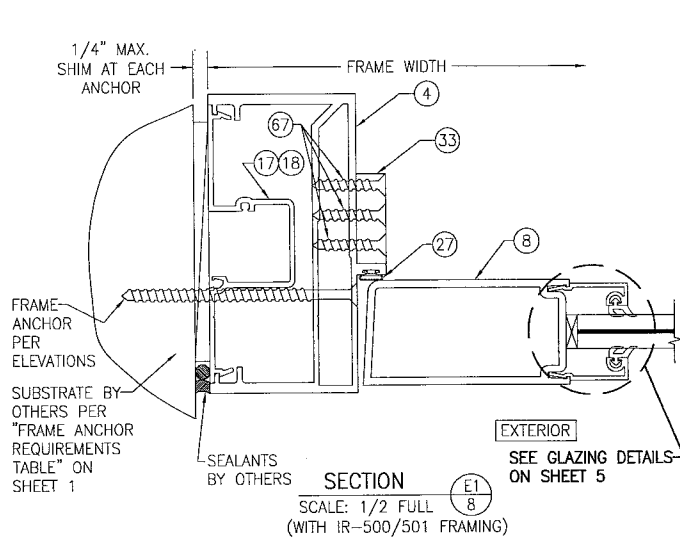
CERTIFICATION	JUN 28 2016
WARR. W. SCHAEFER, P.E.	WARR. W. SCHAEFER, P.E.
NO. 44135	NO. 44135
DRAWING NO.	REV.
1695	B
SHEET NO.	5 OF 13



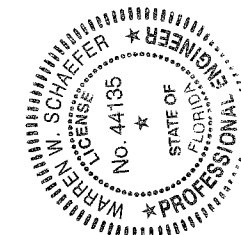
DRAWN BY: W.R.M.	CHECKED BY: W.W.S.
PLT: 1-2	DATE: 02/11/11
DATE	BY
NO.	REVISION DESCRIPTION
DRAWING TITLE: 350/500IR OUTSWING ALUMINUM STOREFRONT DOORS - LMI DRY GLAZED	
CONSULTANTS: KANNEER COMPANY, INC. 555 GUTHRIE COURT NORCROSS, GA 30092 770-449-5555	
W. W. SCHAEFER ENGINEERING & CONSULTING, P.A. (CA 6809) 7480 150TH COURT NORTH PALM BEACH GARDENS, FL 33418 PHONE: 561-744-3424	
CERTIFICATION: JUN 28 2016 WARREN W. SCHAEFER, P.E. P.E. NO. 44135	
DRAWING NO. 1695	REV. B
SHEET NO. 6 OF 13	



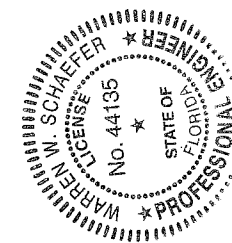
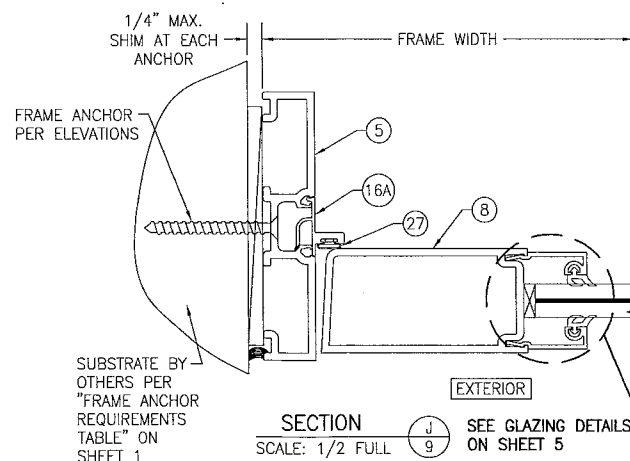
DRAWN BY: W.R.M.	CHECKED BY: W.W.S.
PLT: 1-2	DATE: 02/11/11
DATE	
BY	
REVISION DESCRIPTION	
NO.	
DRAWING TITLE: 350/500IR OUTSWING ALUMINUM STOREFRONT DOORS - LMI DRY GLAZED	
CONSULTANTS: KAWNEER COMPANY, INC. 555 GUTHRIE COURT NORCROSS, GA 30092 770-449-5555	
W. W. SCHAEFER ENGINEERING & CONSULTING, P.A. (CA 6809) 7480 130TH COURT NORTH PALM BEACH, FL 33418 PHONE 561-744-3424	
CERTIFICATION	JUN 28 2016
DRAWING NO. 1695	REV. B
SHEET NO. 7	OF 13



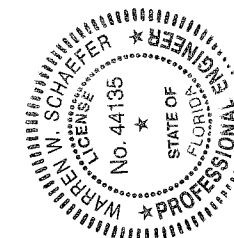
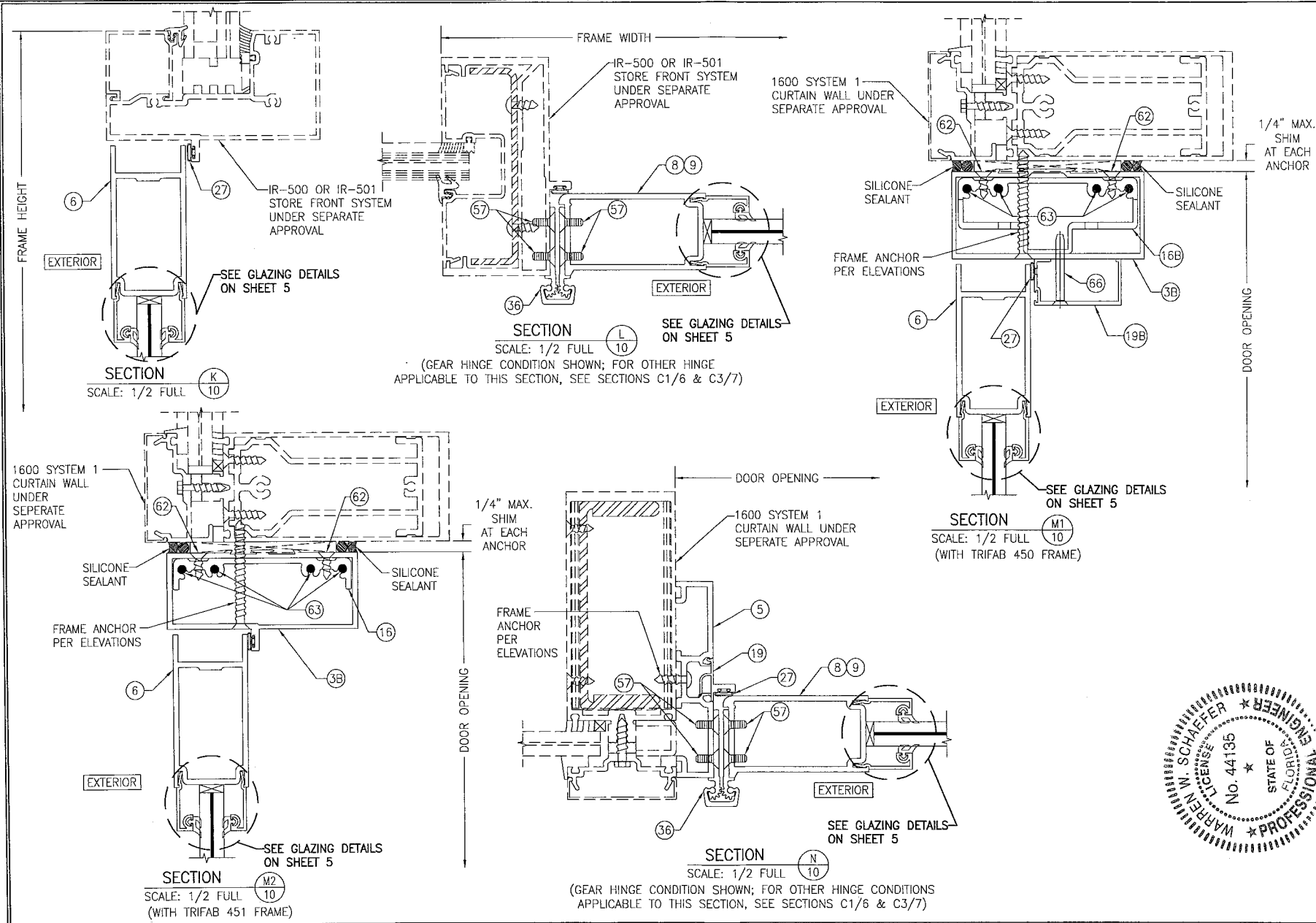
CORBIN RUSSWIN WS70BAKM KEYED INTERIOR MULLION
(KEYED LOCK SHOWN IS AT INTERIOR)
(APPLICABLE WITH CORBIN RUSSWIN ITEM #54 ONLY)



DRAWN BY: W.R.M.	CHECKED BY: W.W.S.
PLOT: 1-2	DATE: 02/11/11
DATE	
BY	
REVISION DESCRIPTION	
NO.	
DRAWING TITLE: 350/500R OUTSWING ALUMINUM STOREFRONT DOORS - LMI DRY GLAZED	
CONSULTANTS: KAWNEER COMPANY, INC. 535 GUTHRIE COURT NORCROSS, GA 30092 770-449-5555	
MANUFACTURER: W. W. SCHAEFER ENGINEERING & CONSULTING, P.A. (CA 6809) 7480 130TH COURT NORTH PALM BEACH GARDENS, FL 33418 PHONE: 561-744-3624	
CERTIFICATION	JUN 28 2016
WARREN W. SCHAEFER, P.E. P.E. NO. 44135	
DRAWING NO. 1695	REV. B
SHEET NO. 8	OF 13



DRAWING NO. 1695		REV. B	
SHEET NO. 9		OF 13	
<div style="display: flex; justify-content: space-between;"> <div> <p>CERTIFICATION</p> <p>JUN 28 2016</p> <p>WARREN W. SCHAEFER, P.E. P. E. NO. 44135</p> </div> <div> <p>W. W. SCHAEFER ENGINEERING & CONSULTING, P.A. (CA 6809) 7480 150TH COURT NORTH PALM BEACH GARDENS, FL 33418 PHONE: 561-744-3424</p> </div> </div>			
DRAWING TITLE 350/500IR OUTSURING ALUMINUM STOREFRONT DOORS -			
LMI DRY GLAZED		MANUFACTURER	
CONSULTANTS		KAWNEER COMPANY, INC. 555 GUTHRIE COURT NORCROSS, GA 30092 770-449-5555	
NO.	REVISION	DESCRIPTION	BY
DATE			
PLOT:		DRAWN BY: W.W.S.	
1=2		CHECKED BY: W.W.S.	
		DATE: 02/11/11	



DRAWN BY: W.R.M.		CHECKED BY: W.W.S.	
PLOT: 1-2		DATE: 02/11/11	
NO.	REVISION	DATE	DESCRIPTION
1			
2			
3			
4			
5			
6			
7			
8			
9			
10			
11			
12			
13			
14			
15			
16			
17			
18			
19			
20			
21			
22			
23			
24			
25			
26			
27			
28			
29			
30			
31			
32			
33			
34			
35			
36			
37			
38			
39			
40			
41			
42			
43			
44			
45			
46			
47			
48			
49			
50			
51			
52			
53			
54			
55			
56			
57			
58			
59			
60			
61			
62			
63			
64			
65			
66			
67			
68			
69			
70			
71			
72			
73			
74			
75			
76			
77			
78			
79			
80			
81			
82			
83			
84			
85			
86			
87			
88			
89			
90			
91			
92			
93			
94			
95			
96			
97			
98			
99			
100			

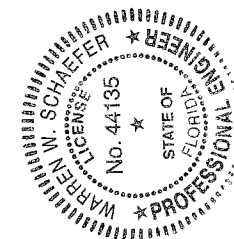
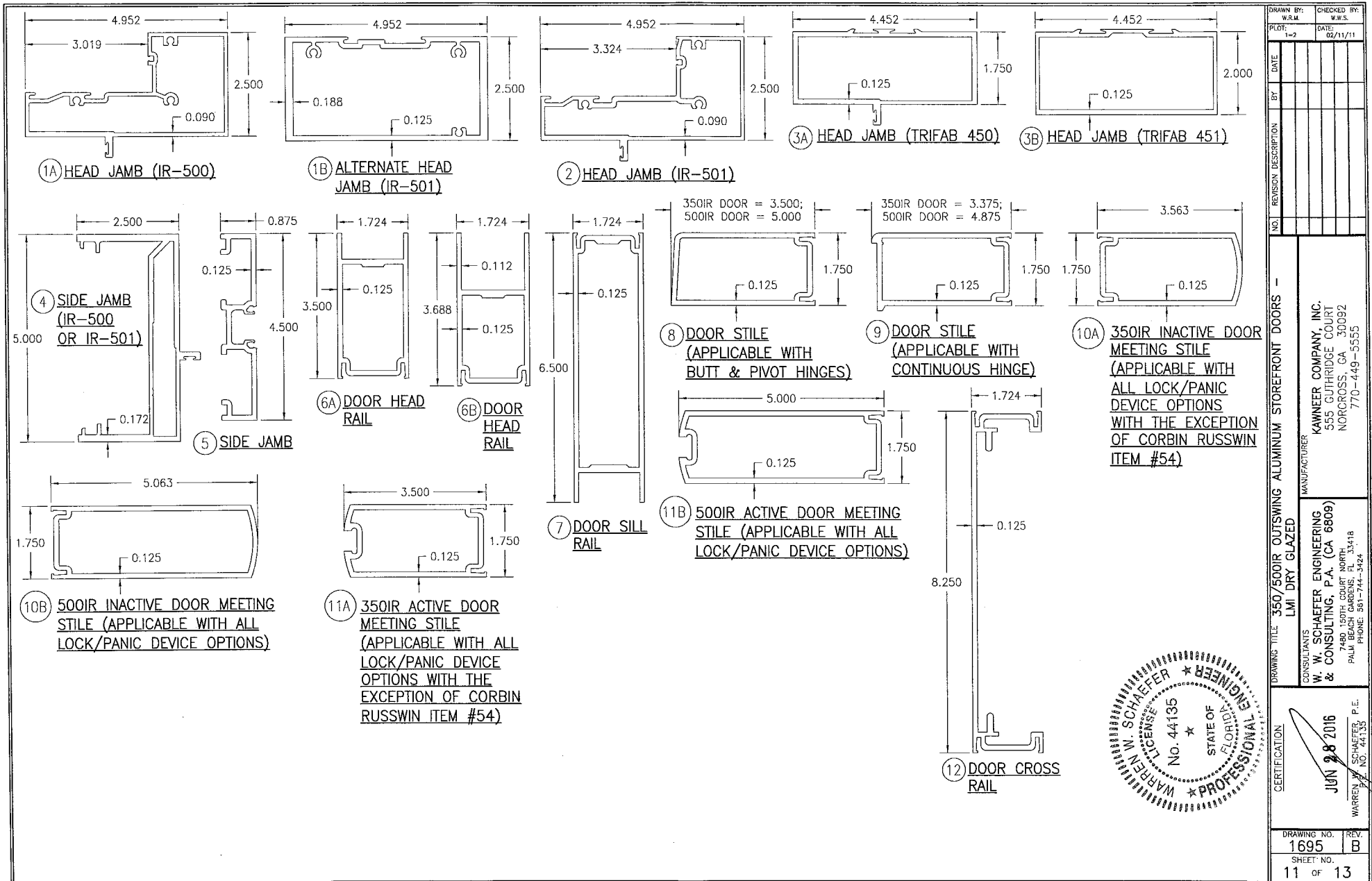
DRAWING TITLE: 350/500R OUTSWING ALUMINUM STOREFRONT DOORS - LMI DRY GLAZED

MANUFACTURER: KAWNEER COMPANY, INC.
555 GUTHRIE COURT
NORCROSS, GA 30092
770-449-5555

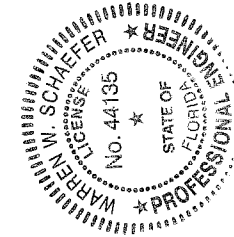
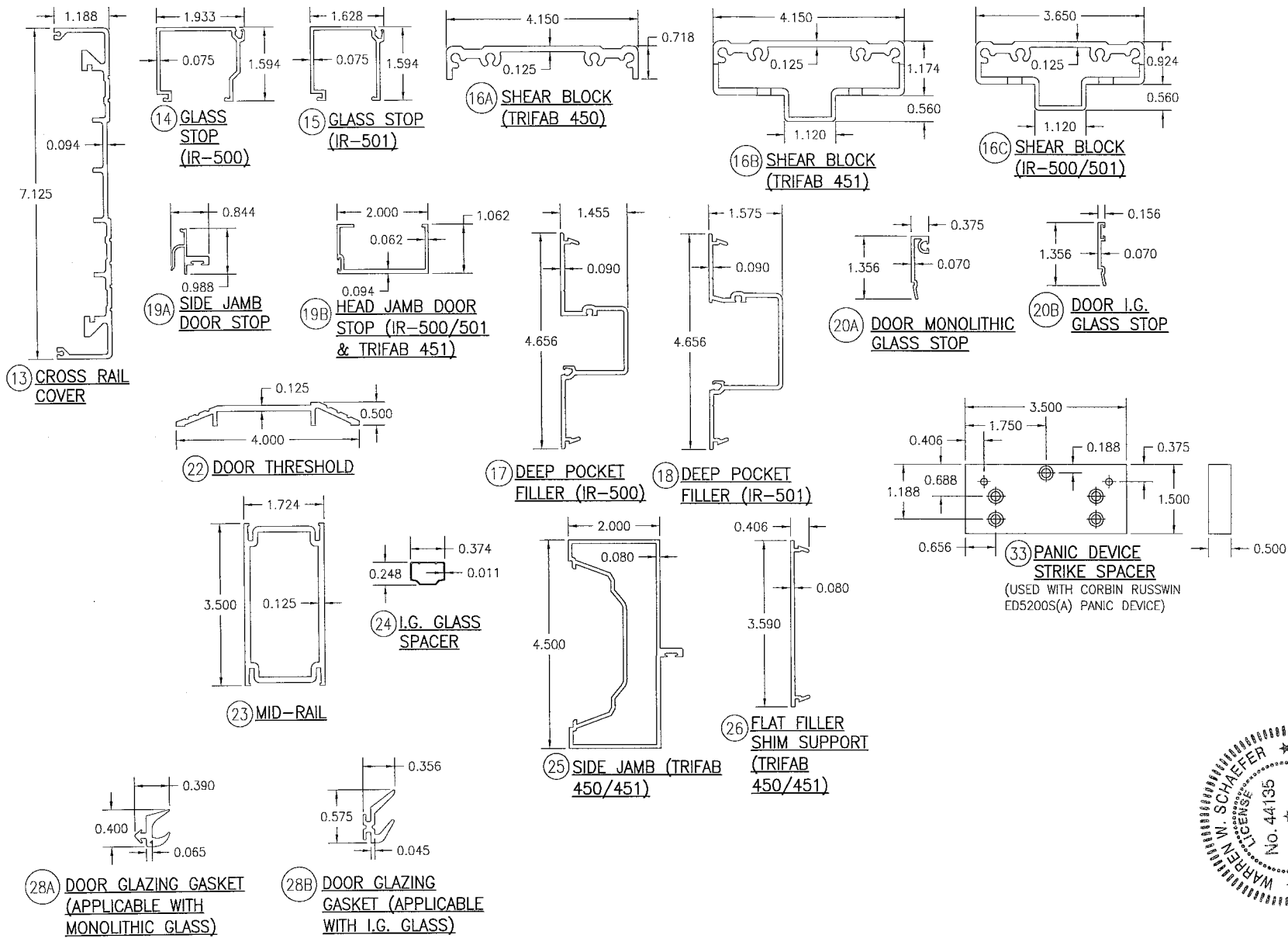
CONSULTANTS: W. W. SCHAEFER ENGINEERING & CONSULTING, P.A. (CA 6809)
7480 150TH COURT NORTH
PALM BEACH GARDENS, FL 33418
PHONE: 561-744-3424

CERTIFICATION: WARREN N. SCHAEFER, P.E.
No. 44136
STATE OF FLORIDA
JUN 28 2016

DRAWING NO. 1695
SHEET NO. 10 OF 13
REV. B



DRAWN BY: W.R.M.	CHECKED BY: W.W.S.
PLOT: 1-2	DATE: 02/11/11
DATE	BY
NO.	REVISION DESCRIPTION
DRAWING TITLE: 350/500IR OUTSWING ALUMINUM STOREFRONT DOORS - LMI DRY GLAZED	
CONSULTANTS	MANUFACTURER
W. W. SCHAEFER ENGINEERING & CONSULTING, P.A. (CA 6809) 7480 150TH COURT NORTH, SUITE 118 PALM BEACH GARDENS, FL 33418 PHONE: 561-744-5424	KAWNEER COMPANY, INC. 535 GUTHRIE COURT NORCROSS, GA 30092 770-449-5555
CERTIFICATION	DATE
WARREN M. SCHAEFER, P.E. LICENSE NO. 44135	JUN 28 2016
DRAWING NO. 1695	REV. B
SHEET NO. 11	OF 13



DRAWN BY: W.R.M.	CHECKED BY: W.R.S.
PLT: 1=2	DATE: 02/11/11
NO.	REVISION DESCRIPTION
DATE	BY
DRAWING TITLE 350/500R OUTSWING ALUMINUM STOREFRONT DOORS - LMI DRY GLAZED	
CONSULTANTS W. W. SCHAEFER ENGINEERING & CONSULTING, P.A. (CA 6809) 7480 150TH COURT NORTH PALM BEACH GARDENS, FL 33418 PHONE 561-744-3424	MANUFACTURER KAWNEER COMPANY, INC. 555 GUTHRIE COURT NORCROSS, GA. 30092 770-449-5555
CERTIFICATION JUN 28 2016 JUN 28 2016	WARREN W. SCHAEFER, P.E. P.E. NO. 44135
DRAWING NO. 1695	REV. B
SHEET NO. 12	OF 13

DRAWING NO. 1695	REV. B	SHEET NO. 13 OF 13	CERTIFICATION JUN 28 2016 WARREN W. SCHAEFER, P.E. P.E. NO. 44135	DRAWING TITLE 350/500IR OUTSWING ALUMINUM STOREFRONT DOORS LMI DRY GLAZED	CONSULTANTS W. W. SCHAEFER ENGINEERING & CONSULTING, P.A. (CA 6809) 7480 150TH COURT NORTH PALM BEACH GARDENS, FL 33418 PHONE: 561-744-3424	MANUFACTURER KAWNEER COMPANY, INC. 555 GUTHRIE COURT NORCROSS, GA 30092 770-449-5555	NO.	REVISION	DESCRIPTION	BY	DATE	PILOT: 1-2	DRAWN BY: W.R.M.	CHECKED BY: W.W.S.
												DATE: 02/11/11		

W. W. Schaefer Engineering & Consulting, P.A. (CA #6809)

7480 150th Court North
Palm Beach Gardens, FL 33418
Phone (561)744-3424

ENGINEER'S EVALUATION REPORT #WWS-311

Prepared for:

Kawneer Company, Inc.
555 Guthridge Court
Norcross, GA 30092
Phone: 770-449-5555

Prepared by:

Warren W. Schaefer, P.E.
Florida Professional Engineer #44135

Manufacturer: Kawneer Company, Inc.

Product Category: Swing Doors

Evaluation Method: 1-D (Engineer's evaluation)

Product model & name: 350/500 IR 8 ft. Tall Dry Glazed Out-Swing Aluminum Storefront LMI Doors

Documents that must accompany this report:

1. W. W. Schaefer Engineering & Consulting drawing No. 1695

Door size restrictions and assembly requirements:

See drawing No. 1695

Maximum allowable design pressure:

See drawing No. 1695

Installation requirements:

See drawing No. 1695

Code compliance:

Code section(s) considered with this evaluation:

FBC Chapters 17 & 24

Glass:

All glass meets the current ASTM E1300 standard.

Test Standards applicable to the testing of this door system:

TAS-201, 202 & 203, ASTM E330, ASTM E1886, ASTM E1996 & AAMA 1304

Test Laboratory: Intertek Architectural Testing, Inc. (Previously named Hurricane Test Laboratory, Inc.)

Test report numbers:

D3741.01-550-18, D3741.02-550-18, D3741.03-550-18, D3741.04-550-18, D3741.05-550-18, D3741.08-550-18, D3741.09-550-18, G049-0805-10, G049-0804-10, G049-0201-09, G049-0310-08, G049-1005-06, G049-1201-05, G049-0111-06

Note: All HVHZ test reports have been signed & sealed by a Florida PE.

General report notes & system limitations:

1. All size & installation conditions shown in this report and the referenced drawing No. 1695 are based off the referenced test reports and/or engineering analysis in accordance with the Florida Building Code.
2. Doors shall be constructed in accordance with the descriptions in this report, and the manufacturer's state approved quality assurance entity specifications.
3. This product is approved for use in & outside of the High Velocity Hurricane Zones (HVHZ).
4. Job required design wind pressure shall be calculated in accordance with the Florida Building Code Chapter 16 and ASCE 7 Minimum Design Loads for Buildings and Other Structures (0.85 directionality factor may apply per the current ASCE 7 standard).
5. These doors are large missile impact rated for use in wind zone 4 & missile level "D" locations and need not be shuttered.
6. Dry glazing gaskets are in accordance with ASTM C864 or ASTM C509 per FBC chapter 24.
7. These door units are not approved for use where water infiltration resistance is required by the door. Unless units are installed in non-habitable areas where the unit & the area are designed to accept water infiltration, units shall be installed only at locations protected by a canopy or overhang where-by the overhang(oh) ratio is equal to or more than 1.0 per FBC.

Quality Assurance Entity: Architectural Testing, Inc.

JUN 28 2016

Warren W. Schaefer, P.E.
Florida P.E. #44135

