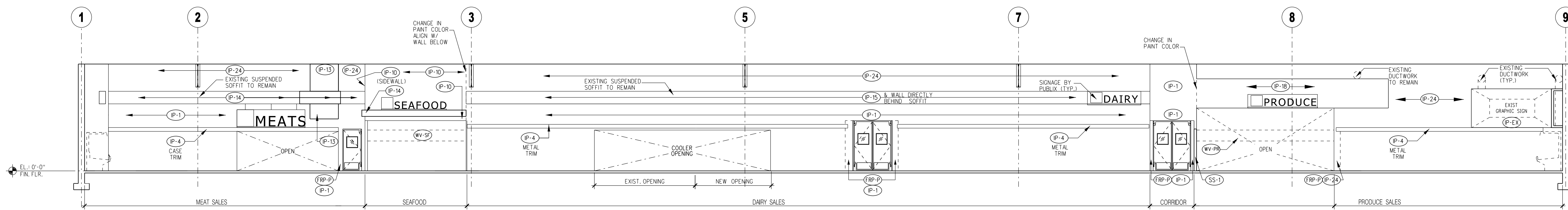
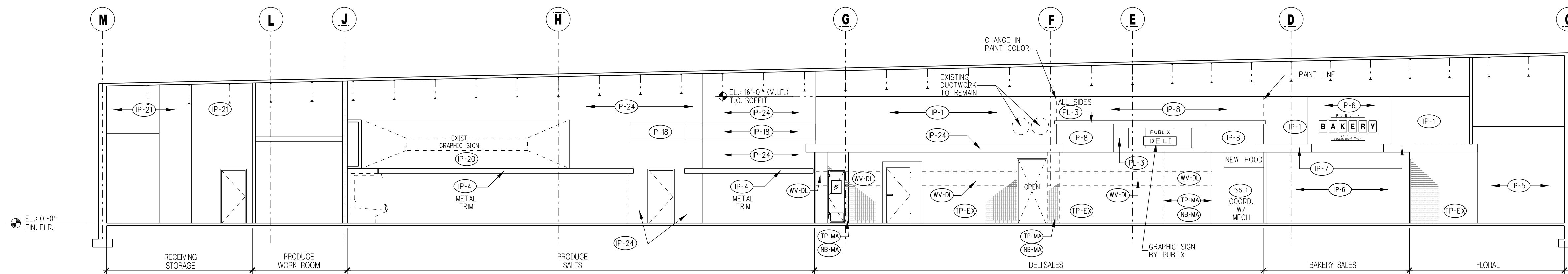


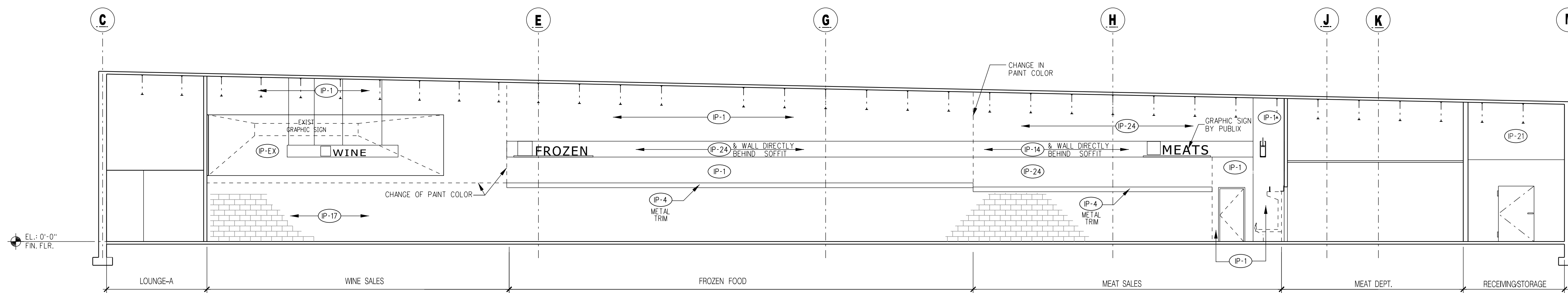
A INTERIOR ELEVATION/SECTION  
A02.04 SCALE 1/8" = 1'-0"



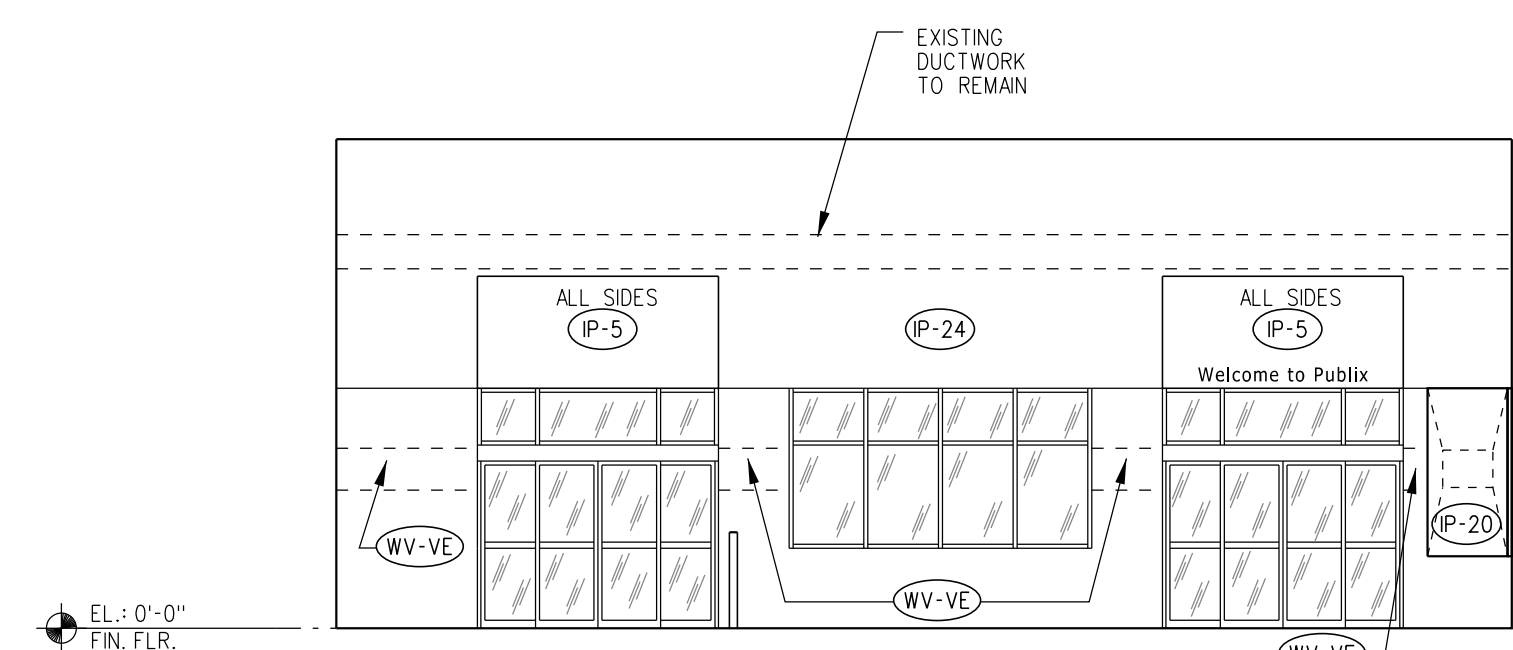
B INTERIOR ELEVATION / SECTION  
A02.04 SCALE 1/8" = 1'-0"



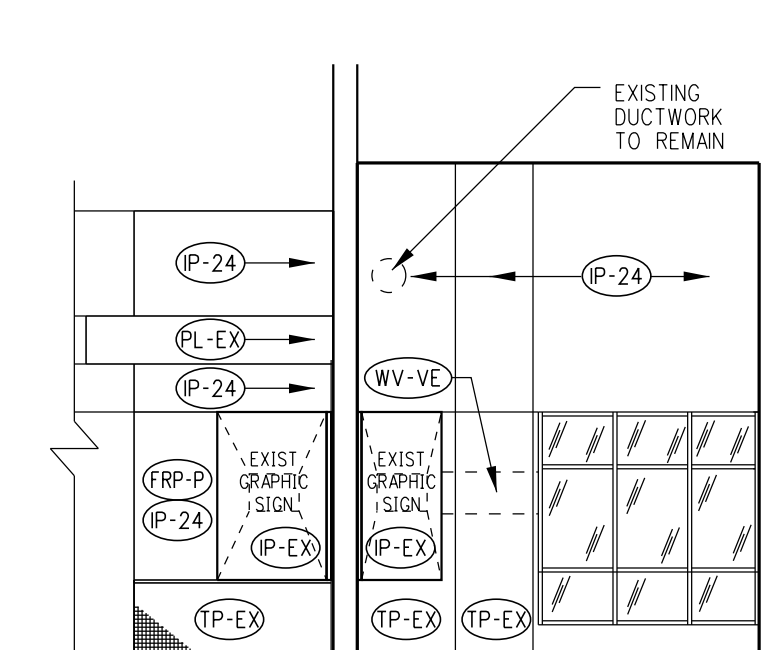
C INTERIOR ELEVATION / SECTION  
A02.04 SCALE 1/8" = 1'-0"



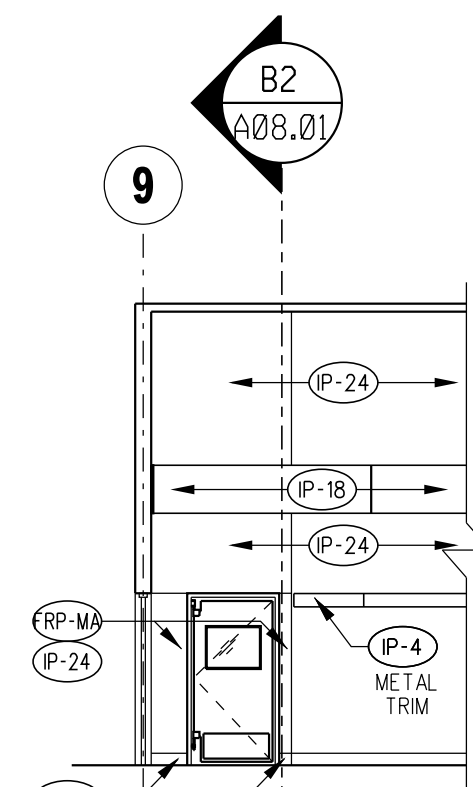
D INTERIOR ELEVATION / SECTION  
A02.04 SCALE 1/8" = 1'-0"



E VESTIBULE ELEVATION-NORTH  
A02.04 SCALE 1/8" = 1'-0"



F PHARMACY / VESTIBULE ELEVATION  
A02.04 SCALE 1/8" = 1'-0"



G PRODUCE SALES AREA  
A02.04 SCALE 1/8" = 1'-0"

## GENERAL NOTES

- GENERAL CONTRACTOR SHALL COORDINATE THE INFORMATION OF ALL INTERIOR WALL AND CEILING FINISHES ON SHEETS A03.01, A02.03 & A02.04. IF CONFLICT EXISTS, CONTRACTOR SHALL CONTACT THE ARCHITECT OF RECORD FOR CLARIFICATION.
- GENERAL CONTRACTOR SHALL REMOVE EXISTING WALL PAPER FROM ALL WALLS AND/OR SOFFITS. CONTRACTOR SHALL PREPARE THE SURFACES TO RECEIVE NEW FINISH. IF REMOVAL OF WALLCOVERING RESULTS IN EXTENSIVE DAMAGE TO THE EXISTING GYPSUM BOARD, A LAYER OF 1/4" GYPSUM BOARD SHALL BE INSTALLED PRIOR TO THE APPLICATION OF THE NEW WALL FINISH.
- GENERAL CONTRACTOR IS RESPONSIBLE FOR CONDUCTING A VISUAL INSPECTION OF ALL FINISHES. IF ANY WALL, CEILING OR FLOOR FINISH NOTED TO REMAIN IS FOUND DAMAGED, THE CONTRACTOR SHALL CLEAN, PATCH AND/OR REPLACE AS REQUIRED TO MATCH EXISTING. CONTRACTOR SHALL COORDINATE WITH THE ARCHITECT OF RECORD AND PUBLIC REPRESENTATIVE.
- ALL WALLS AND COLUMN FINISHES SHALL BE CLASS 'B' OR BETTER.
- PANT ALL COLUMNS IN GROCERY SALES AREA ABOVE STAINLESS STEEL FINISH P-4: SW 619 'ANTIQUE WHITE', U.O.N.
- PANT ALL GYPSUM BOARD CEILINGS, INCLUDING UNDERSIDE AND REAR OF SOFFITS P-22: SW 7006 'EXTRA WHITE', U.O.N.
- ALL SURFACES BEHIND CAGES SHALL RECEIVE PRIMER OR BLOCK FILLER ONLY.
- EXTEND WALL FINISH AND WALL BASE 2'-0" HORIZONTALLY BEHIND CAGES AND SHELVING IN SALES AREA.
- WHERE EXISTING FRP, CERAMIC TILE OR WALL PAPER FINISH IS BEING REMOVED, THE CONTRACTOR SHALL CAREFULLY REMOVE, SAVE AND REUSE EXISTING METAL CORNER GUARDS AND/OR METAL CAPS FOR REUSE (WHERE APPLICABLE).
- CLEAN AND POLISH ALL EXISTING METAL CORNER GUARDS AND CORNER GUARDS AT SALES AREA. VERIFY QUANTITY WITH PUBLIC REPRESENTATIVE.
- APPLY BLOCK FILLER AS REQUIRED TO ALL MASONRY SCHEDULED TO RECEIVE PAINT.
- WHERE MISSING IN BACK STORAGE AREAS, PROVIDE 2" WIDE CONTINUOUS RED STRIPE P-19: SW 6688B 'SAFETY RED', P-19: BELOW FINISHED CEILING TO ODORITE HEIGHT OF STACKING LIMIT. WHERE CEILING IS EXPOSED, PROVIDE 1/4" BELOW LOWEST CEILING MOUNTED EQUIPMENT. WHERE APPLICABLE, REMOVE PANELS, PAINT AND PAINTED WOOD PANEL IN ALL CONDITIONS, MAXIMUM HEIGHT OF STRIPING SHALL NOT EXCEED 10' AT ANY POINT.
- CLEAN ALL COLUMNS, JOISTS, JOIST GIRDERS, METAL DECK AND DUCTWORK, U.O.N.
- CLEAN ALL EXISTING COOLER/FREEZER EXTERIOR WALLS.
- CLEAN ALL VINYL AND CERAMIC TILE WALL BASE.
- ALL NEW OR EXISTING CERAMIC WALL TILE TO BE RE-GROUTED SHALL RECEIVE NON-SANDED LATEX PORTLAND CEMENT GROUT COLOR MEDIUM COOL GRAY COLOR TO SUMMIT VELLE 3700943 'SILVER GRAY' OR LATICRETE #542 'PLATINUM', U.O.N.
- ALL 'EQUAL' DIMENSIONS SHOWN APPLY ONLY TO THE SPECIFIC ELEVATION OR PORTION THEREOF.
- ALL GRAPHICS, SIGNAGE, AND FREE STANDING LETTERS ARE TO BE PROVIDED BY PUBLIC, U.O.N. SEE SEPARATE PUBLIC PACKAGE BY PUBLIX.
- ALL COLORS OR FINISHES MAY NOT APPLY TO THIS PROJECT.
- ALL GYPSUM BOARD AND PLYWOOD FINISH WALLS IN BACK AREAS SUCH AS CORRIDORS, PASSAGES, STORAGE ROOMS, CLOSETS, ELECTRICAL ROOMS, JANITOR ROOMS, RECEIVING AREAS, AND SUPPLY ROOMS SHALL BE PAINTED P-31: SW 6524 'LAZY GRAY'.
- ALL OFFICES AND SUPPORT ROOMS WITH GYPSUM BOARD FINISH SUCH AS MANAGERS' OFFICE, DEPARTMENT OFFICES, CASH ROOM, GENERAL OFFICES, TRAINING ROOM AND EMPLOYEE LOUNGES TO BE PAINTED TO MATCH EXISTING COLOR (V.I.F.) EITHER P-21: SHERWIN WILLIAMS SW 6524 'LAZY GRAY' OR P-4: SW 619 'ANTIQUE WHITE'.
- GENERAL CONTRACTOR SHALL REMOVE EXISTING BASE AS REQUIRED TO ACCOMMODATE INSTALLATION OF NEW WALL FINISH AND INSTALL NEW BASE AFTER PAINTING.
- PAINING CONTRACTOR SHALL CONTACT PUBLIC CONSTRUCTION REPRESENTATIVE TO OBTAIN PAINTING SCOPE FOR DUCT WORK AND DRIP PANS VISIBLE FROM GROCERY SALES AREA.
- ALL SUPPLY/FURNITURE COILS ARE TO BE PAINTED TO MATCH ADJACENT WALL COLOR.
- FINISH SPECIFIED FOR THE FACE OF THE BUILD-OUTS/BANDS SHALL EXTEND TO SIDES AND UNDERSIDES.
- ALL PAINT AT AND BELOW ELEVATION OF 8'-0" AFF. SHALL BE SEMI-GLOSS; ALL PAINT ABOVE 8'-0" AFF. SHALL BE FLAT. (SEE PROJECT MANUAL, SECTION 09 FOR ADDITIONAL INFORMATION ON PAINT SPECIFICATIONS)
- ALL FERROUS AND NON-FERROUS METALS INCLUDING ANODIZED ALUMINUM, SHALL BE PREPARED AND PRIMED WITH DTM BONDING PRIMER AND THEN PAINTED WITH APPLICABLE ADJACENT COLOR.
- AREAS TO RECEIVE GRAPHIC SIGN SHALL HAVE LEVEL 5 FINISH FOR DRYWALL.
- WALL VINYL BAND BY PUBLIX - CC SHALL COORDINATE THE REMOVAL AND RE-INSTALLATION OF ALL DEVICES, EQUIPMENT, DISPENSERS ETC THAT ARE IN THE AREAS TO RECEIVE WALL VINYL BANDS. CC SHALL TAKE CARE TO AVOID DAMAGE OF WALL BANDS DURING THE WALL VINYL BAND INSTALLATION AND THROUGHOUT THE REMAINDER OF CONSTRUCTION.
- ALL GAS PIPING TO BE PAINTED SAFETY YELLOW.

## LEGEND

- INTERIOR PAINT
- (P-1) SHERWIN WILLIAMS SW 6402 PORTABELLO
  - (P-2) SHERWIN WILLIAMS SW 6042 RUSKIN ROOM GREEN
  - (P-3) (NOT USED)
  - (P-4) SHERWIN WILLIAMS SW 619 'ANTIQUE WHITE'
  - (P-5) SHERWIN WILLIAMS SW 6674 JONQUIL
  - (P-6) SHERWIN WILLIAMS SW 6516 DOWN POUR
  - (P-7) SHERWIN WILLIAMS SW 6360 FOLKSY GOLD
  - (P-8) SHERWIN WILLIAMS SW 6431 LEAF COLOR
  - (P-9) (NOT USED)
  - (P-10) SHERWIN WILLIAMS SW 6776 DANCING GREEN
  - (P-11) SHERWIN WILLIAMS SW 6228 REFUGE
  - (P-12) SHERWIN WILLIAMS SW 6206 OYSTER BAY
  - (P-13) SHERWIN WILLIAMS SW 6321 RED BAY
  - (P-14) SHERWIN WILLIAMS SW 7069 IRON ORE
  - (P-15) SHERWIN WILLIAMS SW 6196 TATAM TAN
  - (P-16) (NOT USED)
  - (P-17) SHERWIN WILLIAMS SW 6307 FINE WINE
  - (P-18) SHERWIN WILLIAMS SW 6340 BAKED CLAY
  - (P-19) SHERWIN WILLIAMS SW 6688B SAFETY RED
  - (P-20) SHERWIN WILLIAMS ALKYL PRIMER
  - (P-21) SHERWIN WILLIAMS SW 6254 LAZY GRAY
  - (P-22) SHERWIN WILLIAMS SW 7006 EXTRA WHITE
  - (P-23) (NOT USED)
  - (P-24) SHERWIN WILLIAMS SW 001 CREWEL TAN
  - (P-25) (NOT USED)
  - (P-26) (NOT USED)
  - (P-27) SHERWIN WILLIAMS SW 6515 LEISURE BLUE
  - (P-28) SHERWIN WILLIAMS SW 6527 BLISSFUL BLUE
  - (P-29) MATCH EXISTING ADJACENT COLOR
  - (P-30) EXISTING PAINT COLOR TO REMAIN
- PLASTIC LAMINATE
- (L-1) (NOT USED)
  - (L-2) (NOT USED)
  - (L-3) WILSONART ALUMASTEEL 6277 TYPE 418
  - (L-4) WILSONART \*709K-18 'BLOND ECHO'
  - (L-5) WILSONART \*709K-18 'ASIAN SUN'
  - (L-6) (NOT USED)
  - (L-7) WILSONART \*7209K-78 'NETA TEAK'
  - (L-8) WILSONART \*4673-60 'SAFFRON TONES'
  - (L-9) WILSONART \*4912-38 'GOLDEN MESH'
  - (L-10) WILSONART \*4588-07 'KALAHARI TOPAZ'
  - (L-11) WILSONART \*7962K-18 'ALICE'
  - (L-12) CAMPLAST \*K00859 'BRUSHED ALUMINUM' E.B.
  - (L-13) WILSONART \*794K-18 'TAN ECHO'
  - (L-14) NEW PLASTIC LAMINATE TO MATCH EXISTING
  - (L-15) EXISTING PLASTIC LAMINATE TO REMAIN
- FIBERGLASS REINFORCED PLASTIC
- (FRP-1) FIBERGLASS 'STRUCTOCOLAS FRP' - 'ALUMINO' MARLITE 'STANDARD FRP' - 'IVORY' GLASTEEL 'GLASLINER FRP' - 'IVORY'
  - (FRP-2) FIBERGLASS 'STRUCTOCOLAS FRP' - 'WHITE' MARLITE 'STANDARD FRP' - 'WHITE' GLASTEEL 'GLASLINER FRP' - 'WHITE'
  - (FRP-3) FIBERGLASS 'STRUCTOCOLAS FRP' - 'IVORY' MARLITE 'STANDARD FRP' - 'LIGHT GRAY' GLASTEEL 'GLASLINER FRP' - 'LIGHT GRAY'
  - (FRP-4) FIBERGLASS 'STRUCTOCOLAS FRP' - 'PEARL GRAY'
  - (FRP-5) EXISTING FRP PANELS TO REMAIN
  - (FRP-6) NEW FRP PANELS TO MATCH EXISTING
  - (FRP-7) NEW FRP PANELS TO BE PAINTED
- COOLER WALL/FREEZER PANEL FINISH
- (CW-4) COOLER WALL/FREEZER PANEL - EMBOSSED ALUMINUM FINISH
  - (CW-5) COOLER WALL/FREEZER PANEL - STAINLESS STEEL FINISH
  - (CW-6) COOLER WALL/FREEZER PANEL - WHITE FINISH
  - (CW-7) COOLER WALL/FREEZER PANEL - EXISTING TO REMAIN
- METAL FINISHES
- (SS-1) STAINLESS STEEL
  - (SS-2) EXISTING STAINLESS STEEL FINISH TO REMAIN
  - (SS-3) GALVANIZED STEEL
- CERAMIC TILE
- (TP-1) CERAMIC & FLOOR TILE PATTERN - SEE CORRESPONDING DETAIL IN PUBLIX TILE PATTERN MANUAL AT <http://corporate.publix.com/business/design-and-construction>
  - (TP-2) NEW CERAMIC TILE PATTERN (MMA)
  - (TP-3) NEW CERAMIC TILE PATTERN (VEST.)
  - (TP-4) NEW CERAMIC TILE PATTERN (MMA VEST.)
  - (TP-5) NEW CERAMIC TILE PATTERN
  - (TP-6) NEW CERAMIC TILE PATTERN REFER TO DETAILS ON RELATED SHEET
  - (TP-7) NEW CERAMIC TILE TO MATCH EXISTING
  - (TP-8) EXISTING CERAMIC TILE TO REMAIN
  - (TP-9) NEW CERAMIC TILE TO MATCH EXISTING
- WALL BASE
- (WB-1) NEW QUARRY TILE BASE MATCH ADJACENT BASE UNLESS NOTED OTHERWISE ON PLAN OR DETAIL
  - (WB-2) VINYL BASE - 6" COVERED 'JOHNSONITE #49 BEIGE' OR EQUAL
  - (WB-3) VINYL BASE - 4" COVERED MEDIUM GREY
  - (WB-4) VINYL BASE - 6" COVERED MEDIUM GREY
  - (WB-5) WOOD BASE - 4" MEDIUM GREY
  - (WB-6) NEW 6" MMA BASE
  - (WB-7) EXISTING MMA BASE TO BE RESURFACED (MATCH EXISTING)
  - (WB-8) STAINLESS STEEL BASE - 6" COVERED
  - (WB-9) NEW BASE TO MATCH EXISTING ADJACENT
- MISCELLANEOUS
- (LTP-1) ALL TOILET PARTITIONS TO BE SCRANTON 'PARCMENT' OR 'CLONIA' 'CREAM' OR 'MILKMAKERS' 'LINDY' OR 'MILKMAKERS' 'TONIQUE' AND GROOVE PLANKING - 1/2" THICK BY 4" WIDE, V-JOINT LINGULIN SOUTHERN PINE, S4S FINISH - MINWAX WOOD FINISH 'GOLDEN PECAN 240'
  - (LTP-2) (NOT USED)
  - (LTP-3) EXISTING WALL COVERING TO REMAIN
  - (LTP-4) QUARTZ RESIN SOLID SURFACE - CAMBRIA DESERT COLLECTION, 'DEWITT' OR 'SOW THICK' WITH MEDIUM EDGE
  - (LTP-5) ACCENT MATERIAL PROVIDED BY PUBLIC; SEE PUBLIC REPRESENTATIVE FOR MORE INFORMATION
  - (LTP-6) FROSTED GLASS DECORATIVE FILM - 3M FASARA GLASS FINISHES - 'CELLO'
  - (LTP-7) PAINTED PLYWOOD - SHERWIN WILLIAMS SW 6254 LAZY GRAY
  - (LTP-8) STAINLESS STEEL WALL VINYL ADJACENT BAND 10' HIGH - SEE PUBLIC REPRESENTATIVE FOR MORE INFORMATION
  - (LTP-9) VINYL
  - (LTP-10) VINYL
  - (LTP-11) VINYL
  - (LTP-12) VINYL
  - (LTP-13) VINYL
  - (LTP-14) VINYL
  - (LTP-15) VINYL
  - (LTP-16) VINYL
  - (LTP-17) VINYL
  - (LTP-18) VINYL
  - (LTP-19) VINYL
  - (LTP-20) VINYL
  - (LTP-21) VINYL
  - (LTP-22) VINYL
  - (LTP-23) VINYL
  - (LTP-24) VINYL
  - (LTP-25) VINYL
  - (LTP-26) VINYL
  - (LTP-27) VINYL
  - (LTP-28) VINYL
  - (LTP-29) VINYL
  - (LTP-30) VINYL
  - (LTP-31) VINYL
  - (LTP-32) VINYL
  - (LTP-33) VINYL
  - (LTP-34) VINYL
  - (LTP-35) VINYL
  - (LTP-36) VINYL
  - (LTP-37) VINYL
  - (LTP-38) VINYL
  - (LTP-39) VINYL
  - (LTP-40) VINYL
  - (LTP-41) VINYL
  - (LTP-42) VINYL
  - (LTP-43) VINYL
  - (LTP-44) VINYL
  - (LTP-45) VINYL
  - (LTP-46) VINYL
  - (LTP-47) VINYL
  - (LTP-48) VINYL
  - (LTP-49) VINYL
  - (LTP-50) VINYL
  - (LTP-51) VINYL
  - (LTP-52) VINYL
  - (LTP-53) VINYL
  - (LTP-54) VINYL
  - (LTP-55) VINYL
  - (LTP-56) VINYL
  - (LTP-57) VINYL
  - (LTP-58) VINYL
  - (LTP-59) VINYL
  - (LTP-60) VINYL
  - (LTP-61) VINYL
  - (LTP-62) VINYL
  - (LTP-63) VINYL
  - (LTP-64) VINYL
  - (LTP-65) VINYL
  - (LTP-66) VINYL
  - (LTP-67) VINYL
  - (LTP-68) VINYL
  - (LTP-69) VINYL
  - (LTP-70) VINYL
  - (LTP-71) VINYL
  - (LTP-72) VINYL
  - (LTP-73) VINYL
  - (LTP-74) VINYL
  - (LTP-75) VINYL
  - (LTP-76) VINYL
  - (LTP-77) VINYL
  - (LTP-78) VINYL
  - (LTP-79) VINYL
  - (LTP-80) VINYL
  - (LTP-81) VINYL
  - (LTP-82) VINYL
  - (LTP-83) VINYL
  - (LTP-84) VINYL
  - (LTP-85) VINYL
  - (LTP-86) VINYL
  - (LTP-87) VINYL
  - (LTP-88) VINYL
  - (LTP-89) VINYL
  - (LTP-90) VINYL
  - (LTP-91) VINYL
  - (LTP-92) VINYL
  - (LTP-93) VINYL
  - (LTP-94) VINYL
  - (LTP-95) VINYL
  - (LTP-96) VINYL
  - (LTP-97) VINYL
  - (LTP-98) VINYL
  - (LTP-99) VINYL
  - (LTP-100) VINYL

STORE No. 0032 (INTERIOR REMODEL)  
SHOPPES AT HAMMOCK COVE  
4370 THOMAS DR  
NAPLES, FL 34112-6725

PROJECT NAME:

publix super markets, inc.  
CORPORATE OFFICES ARCHITECTURE DEPT.  
BOX 407 LAKELAND, FL 33802  
TELEPHONE 813/666-1166

CLIENT:

REVISIONS:

PROFESSIONAL SEAL:

A/E OF RECORD:  
ALEXANDRO ECHEVERRY  
LIC. # AH-0009554

NOT VALID FOR CONSTRUCTION  
UNLESS SIGNED IN THIS BOX

SHEET INFORMATION:

JOB NO.: 100056077

DESIGNED/DRAWN BY: E.M./J.P.

CHECKED BY: A.E.

DATE: 10/20/17

SHEET TITLE:

FINISHES AND COLORS  
INTERIOR ELEVATIONS

SHEET NUMBER:

A02.04

SHEET 5 OF 10