


FAN UNIT NO.	TAG	DOAS/RTU MODEL #	BLOWER	RETURN AIR CFM	MAX OUTSIDE AIR CFM	TOTAL CFM	ESP.	RPM	H.P.	B.H.P.	Ø	VOLT	MCA	MCOP	WEIGHT (LBS.)	SONES	BURNER EFFICIENCY(%)
1		CASRTU3-E-152-18-13T-DOAS	18P-3	0	1500	1500	1.250	1118	5.000	0.9520	3	208	94.74	100A	2426	10.3	

FAN UNIT NO.	TAG	COMPRESSOR			OUTDOOR FAN				ENTERING DB TEMP.	ENTERING WB TEMP.	LEAVING DB TEMP.	LEAVING WB TEMP.	TOTAL CAPACITY	SENSIBLE CAPACITY	LATENT CAPACITY	REHEAT LEAVING DB TEMP.	REHEAT LEAVING WB TEMP.	DESIGNS REHEAT CAPACITY	MAX REHEAT CAPACITY	REHEAT LEAVING RELATIVE HUMIDITY	KEER
		TONNAGE	VOLTAGE	#	MOTOR VOLTAGE	MOTOR #	MOTOR FREQUENCY	MOTOR CITY													
1		13	200-240	3	200-240	3	60	2	93.07	78.07	44.87	40.27	173.4 MBH	78.0 MBH	95.4 MBH	75.07	60.07	48.9 MBH	129.8 MBH	41	18.8

FAN UNIT NO.	TAG	DSGN. KW'S	MAX. KW'S	VOLTS	AMPERAGE	TEMP. RISE	OUTPUT BTU's
1		15	15	208	36.1	33 deg F	51195

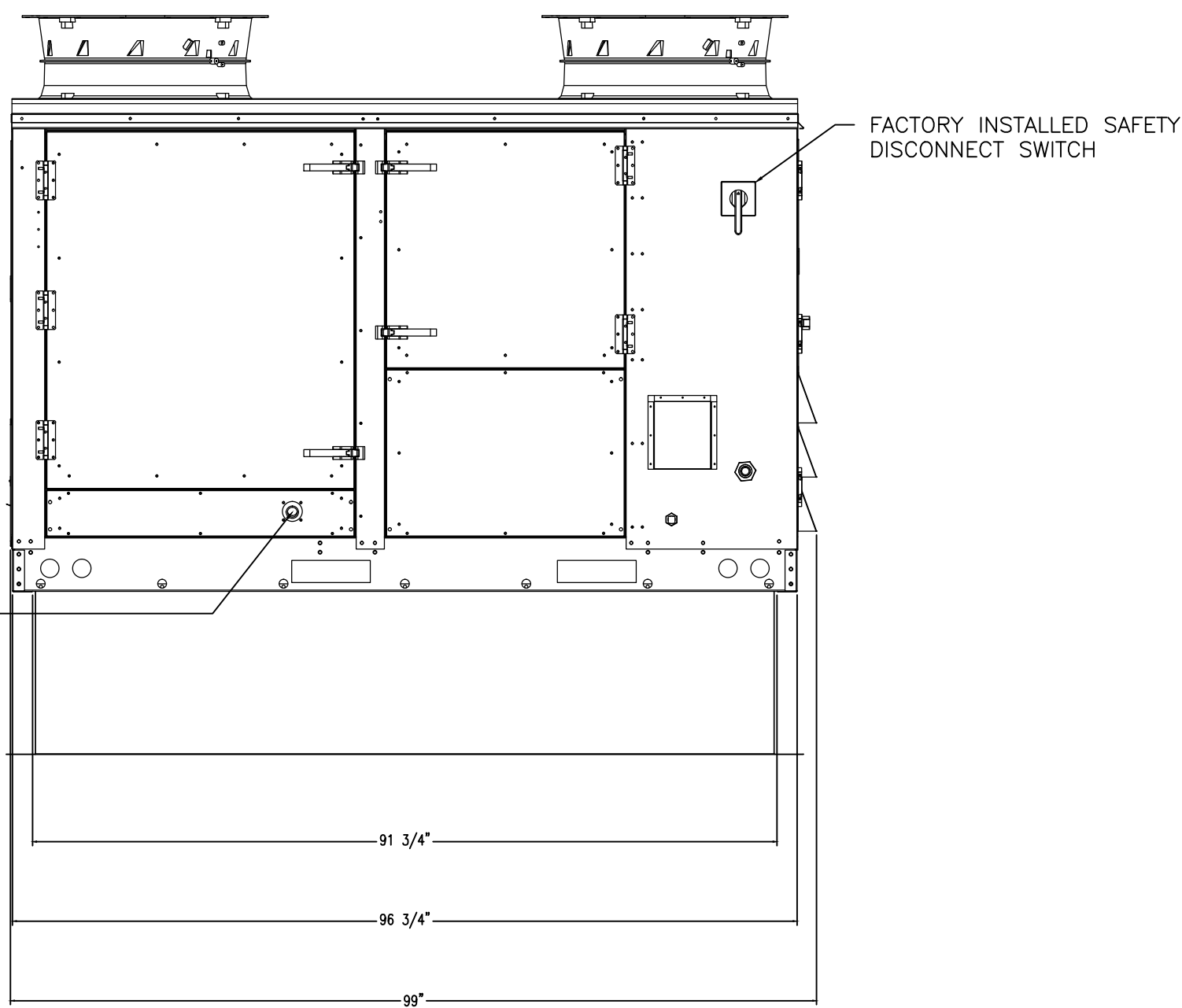
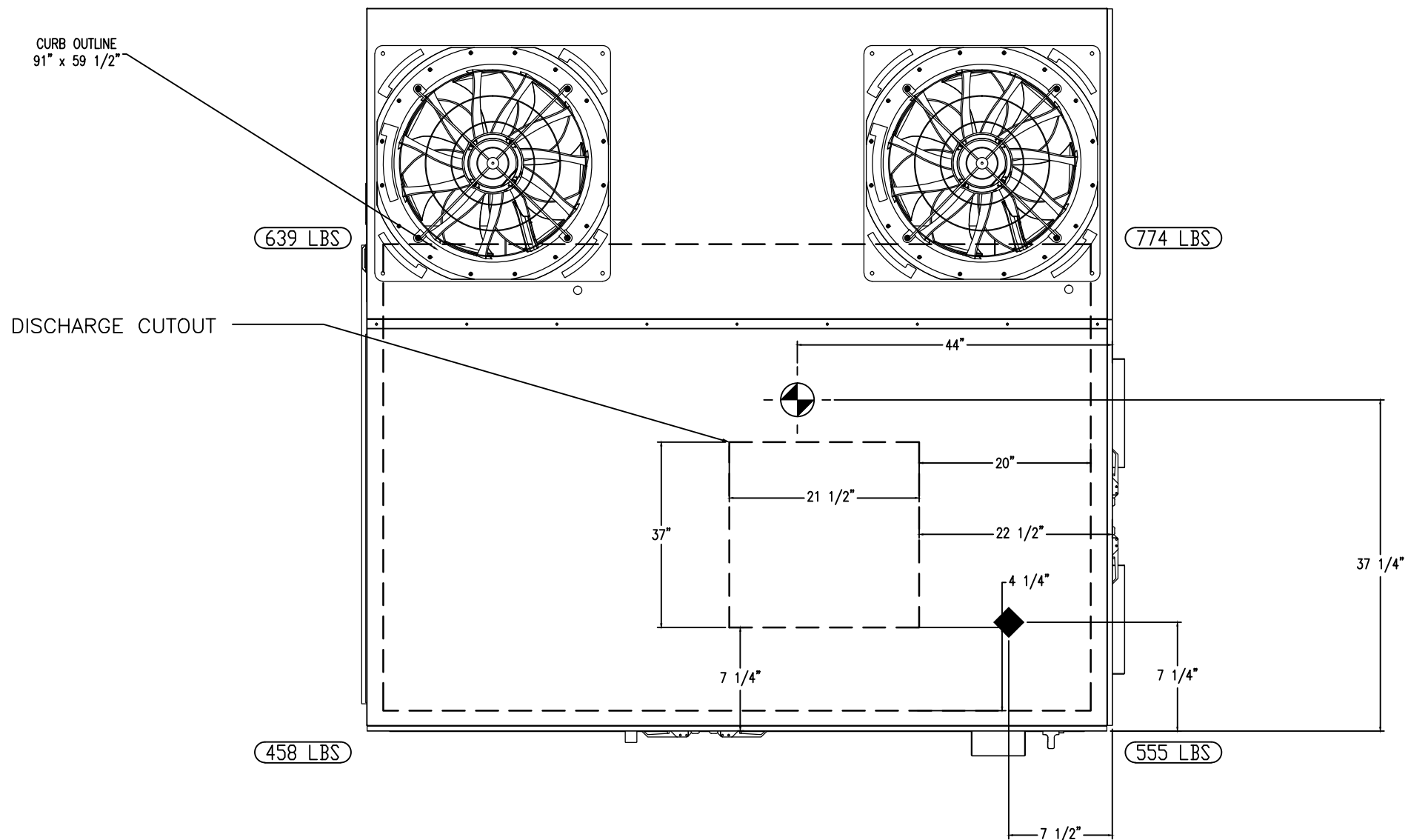
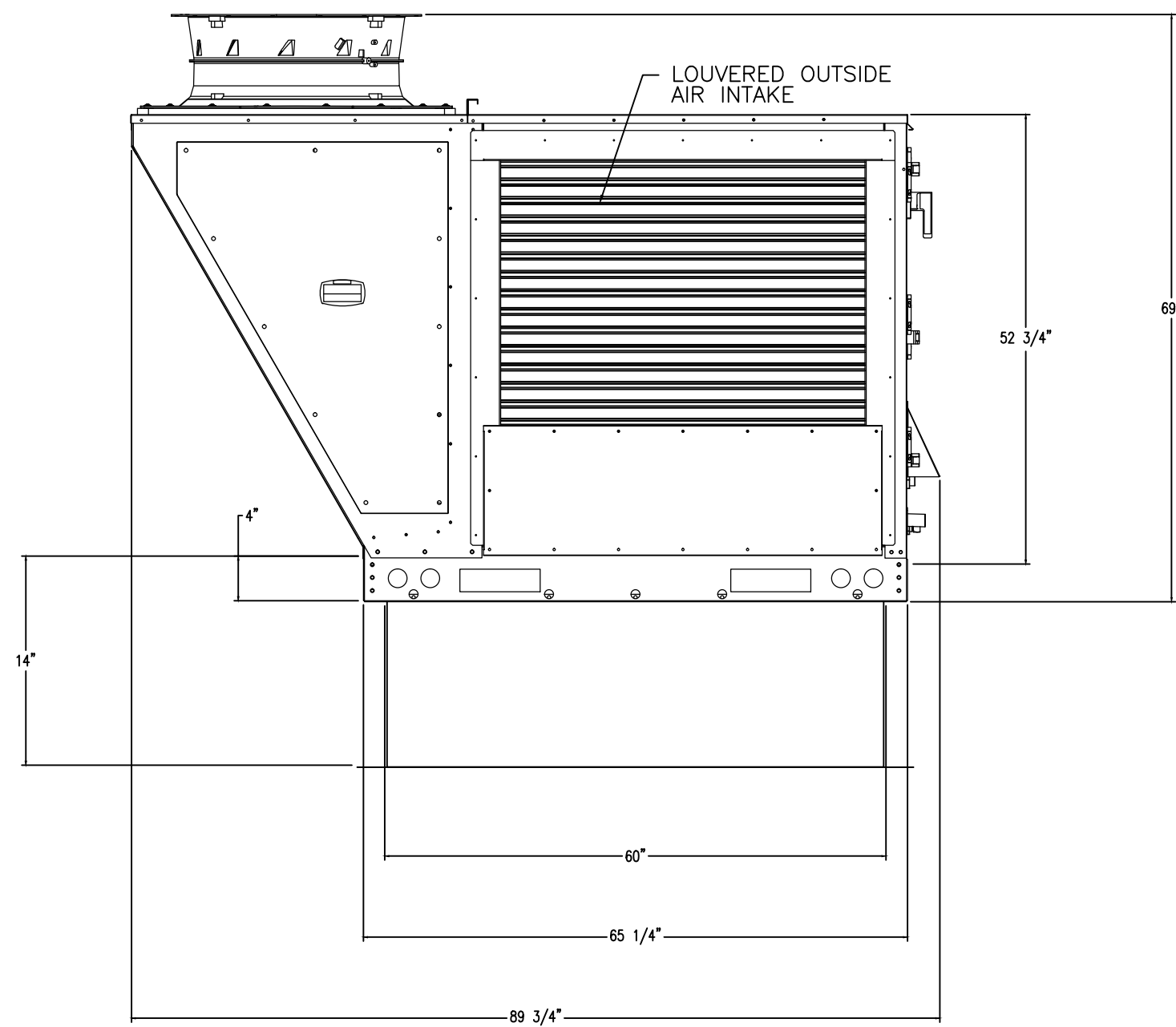
NO.	ON FAN	WEIGHT	ITEM	SIZE
1	# 1	105 LBS	Curb	59.500"W x 91.000"L x 14.000"H Insulated 16 Gauge

NOTES:

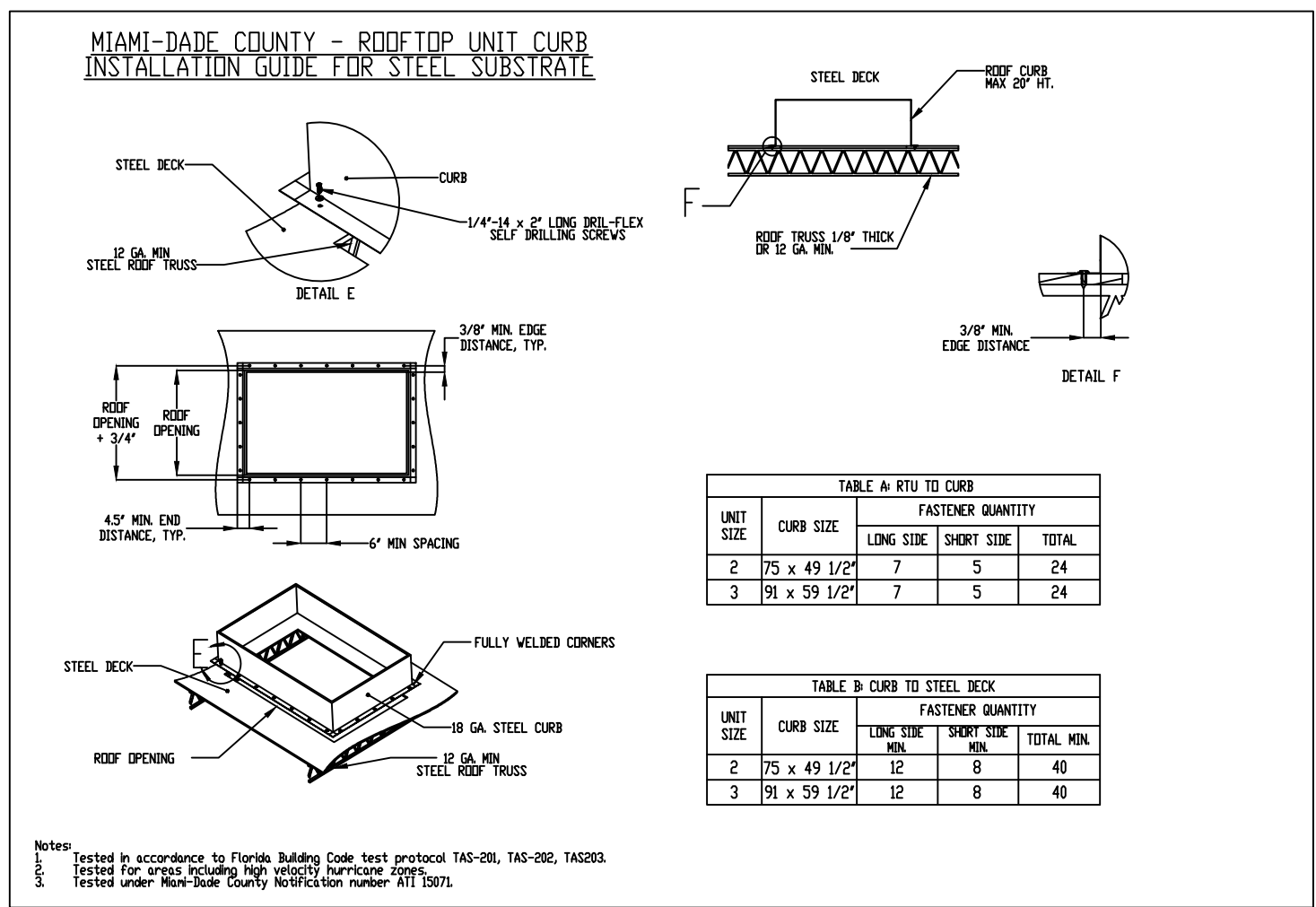
1. DO NOT OBSTRUCT OUTSIDE AIR INLET, OUTSIDE AIR COIL OR OUTSIDE AIR FAN.
2.  DENOTES CORNER WEIGHT.
3. ROOF OPENING MUST BE 2" SMALLER THAN CURB DIMENSIONS IN BOTH DIRECTIONS.

FIN PART NO.	TAG	OPTION (Qty. = Desc.)
		<ul style="list-style-type: none"> 1 – RTU Size 3 Down Discharge 1 – 2" MERV 13 Filters for Size 3 RTU, Qty. 4. 1 – 2" MERV 8 Filters for Size 3 RTU, Qty. 4. 1 – RTU Compressor or Saver, Factory Installed 1 – WD Insulator mounted and wired to commercial control unit without for RTU 1 – 13.1 Ton Modulating Cooling, Outdoor, 240/240, 94/104 Refrigerant, Variable Speed Compressor, ECM Condensing Fan(s). 1 – RTU fixed 100% Air Inlet Control 1 – RTU Size 3 No Return 1 – Size 3 RTU Curb Deck Hanger 1 – Coasting for Size 3 RTU 13T Condenser Coil. 1 – Coasting for Size 3 RTU 13T Evap. Coil. 1 – Miami Dade Certification RTU Size 3
		<ul style="list-style-type: none"> 1 – Single Point Connection – Electric Heater RTU, Blower & Heater Model: 1000 Watts & Phase: 0971 (240V/1000W) to be factory installed. If a Non-24V Power source, this unit, the #228, #47, "M", or "L" Option Power must be selected. Do not provide supply starter in power. 1 – CAC/CA Building Inventory System – Internet or Cellular Connection Required 1 – Occupied Scheduling 1 – Occupied Filter Switch with notification on IMA 1 – Size 3 RTU Convenience Outlet (CVO), 16 amp – Require Sequence 1200 Connection. Includes remote(s), cover and 1/2 in. pipe. 1 – 13.1 Ton Modulating Heating, Outdoor, Active Modest on Source Relative Humidity. 1 – Wd Wapack w/ Manual Control (RTU WD Included) 1 – Coasting for Size 3 RTU 13T Return Coil. 1 – Commercial Smoke Detector/Alarm (Interlock Included by Other)

1. RTU SIZE 3 DOWN DISCHARGE
2. 2" MERV 13 FILTERS FOR SIZE 3 RTU. QTY 4.
3. 2" MERV 8 FILTERS FOR SIZE 3 RTU. QTY 4.
4. RTU COMPRESSOR OIL SENSOR. FACTORY INSTALLED
5. VFD FACTORY MOUNTED AND WIRED IN COMMERCIAL CONTROL VESTIBULE FOR RTU
6. 13 TON MODULATING COOLING OPTION, 208/230V. R410A REFRIGERANT, VARIABLE SPEED COMPRESSOR, ECM CONDENSING FAN(S).
7. RTU FIXED 100% OA INTAKE CONTROL
8. RTU SIZE 3 NO RETURN
9. SIZE 3 RTU CURB DUCT HANGER
10. ECOATING FOR SIZE 3 RTU 13T CONDENSER COIL.
11. ECOATING FOR SIZE 3 RTU 13T EVAP COIL.
12. MIAMI DADE CERTIFICATION RTU SIZE 3
13. SINGLE POINT CONNECTION – ELECTRIC HEATER RTU. BLOWER & HEATER MUST BE THE SAME VOLTAGE & PHASE. QNTY 1 750VA TRANSFORMER USED. IF A NON-DCV PREWIRE CONTROLS THIS UNIT, THE #28, #47, "MA", OR "E2" OPTION PREWIRE MUST BE SELECTED. DO NOT PROVIDE SUPPLY STARTER IN PREWIRE
14. CASLINK BUILDING MONITORING SYSTEM – INTERNET OR CELLULAR CONNECTION REQUIRED
15. OCCUPIED SCHEDULING
16. CLOGGED FILTER SWITCH WITH NOTIFICATION ON HMI
17. SIZE 3 RTU CONVENIENCE OUTLET (GFCI), 15 AMP – REQUIRES SEPARATE 120V CONNECTION. INCLUDES RECEPTACLE, COVER AND J BOX.
18. 13 TON MODULATING REHEAT OPTION. ACTIVATE BASED ON SPACE RELATIVE HUMIDITY.
19. VAV PACKAGE W/ MANUAL CONTROL (571 VFD INCLUDED)
20. ECOATING FOR SIZE 3 RTU 13T REHEAT COIL.
21. COMMERCIAL SMOKE DETECTOR/ALARM INTERLOCK (SUPPLIED BY OTHERS)



<p>Miami-Dade NOA6</p> <p>General Notes:</p> <ol style="list-style-type: none"> 1. This approval is for the structural capacity and impact rating of the exterior housing only; it does not include any interior mechanism or electrical port. 2. These fans have not been wind tested for Wind Dirvers Rain Test per Florida Building Code, IMC300 (A)-99. 3. Tested in accordance to Florida Building Code test protocol IMC301, IMC302, IMC303. 4. Tested for areas including high velocity hurricane zones. 5. Tested under Miami-Dade County Notification number AH 15071. 	
<p align="center">DESIGN PRESSURE: +150.0 / -150.0 PSF LARGE MISSILE IMPACT RESISTANT</p>	



UNIT SIZE	CURB SIZE	FASTENER QUANTITY		
		LONG SIDE	SHORT SIDE	TOTAL
2	75 x 49 1/2"	7	5	24
3	91 x 59 1/2"	7	5	24

UNIT SIZE	CURB SIZE	FASTENER QUANTITY		
		LONG SIDE MIN.	SHORT SIDE MIN.	TOTAL MIN.
2	75 x 49 1/2"	12	8	40
3	91 x 59 1/2"	12	8	40

REVISIONS		
	DESCRIPTION	DATE:
△		
△		
△		
△		

CAPTIVE

Southwest Florida Office

2501 90 Bernwood Drive, Unit 11, Bonita Springs, FL 34135 PHONE: (813) 445-7884 FAX: (919) 227-5920 EMAIL: reg@captiveware.com
www.captiveware.com

Cirella's - DOAS
NAPLES, FL, 34112

DATE: 4/24/2017

DWG.#:
2996392

DRAWN BY: SM-68

SCALE:
1/2" = 1'-0"

MASTER DRAWING

SHEET NO.
1

Spelman Engineering, Inc.
1923 SE 10TH PLACE CAPE CORAL, FLORIDA 33990
PHONE (239/770-2930) FAX (239/458-9854)
email: cspelman@spelmanengineering.com
FLORIDA CA #26955

PUBLICATION OR REUSE OF THESE PLANS AND SPECIFICATIONS EXPRESSLY LIMITED TO THIS PROJECT ONLY. REUSE, REPRODUCTION, OR PUBLICATION IN WHOLE OR PART IS PROHIBITED WITHOUT WRITTEN CONSENT OF THE ENGINEER. TITLE TO THE DESIGNS REMAINS WITH THE ENGINEER.

CHARLES P. SPELMAN, PE FLORIDA LICENSE #34925

No:	REVISIONS
1	
2	
3	

Proposed New Cirella's Restaurant
Vanderbilt Commons Building #1
 Unit # 1, Vanderbilt Beach Road
 Naples, Florida

LOTUS
ARCHITECTURE

2950 Tamiami Trail N.
Suite 16
Naples, Florida 34103
PH: (239) 304-3041

8200 College Parkway
Suite 101
Ft. Myers, Florida 33901
PH: (239) 482-2121

www.LOTUSarchitecture.com

AA26001786

Reviewed for Code
Compliance
PRBD20170518692

4769

DATE: 03.21.17

AD REF:

SHEET
M-4

CHARLES P. SPELMAN, PE
FLA REG #34925

CHARLES P. SPELMAN, PE FLORIDA LICENSE #34925

HOOD INFORMATION - Job#2996357

HOOD NO.	TAG	MODEL	LENGTH	MAX. COOKING TEMP.	TOTAL EXH. CFM	EXHAUST PLENUM RISER(S)						TOTAL SUPPLY CFM	HOOD CONSTRUCTION	HOOD CONFIG.	
						WIDTH	LENG.	HEIGHT	DIA.	CFM	VEL.			END TO END	ROW
1		5430 ND-2-PSP-F	13' 3.00"	450 Deg.	3644			4"	14"	1822	-0.875"	2915	430 SS 100%	ALONE	ALONE
2		4224 VHB-G-PSP-F	4' 0.00"	700 Deg.	600			4"	10"	600	-0.090"	425	430 SS 100%	ALONE	ALONE

HOOD INFORMATION

HOOD NO.	TAG	FILTER(S)					LIGHT(S)					UTILITY CABINET(S)				FIRE SYSTEM PIPING	HOOD HANGING WGT
		TYPE	QTY.	HEIGHT	LENGTH	EFFICIENCY @ 7 MICRONS	QTY.	TYPE	WIRE GUARD	LOCATION	SIZE	TYPE	SIZE	MODEL #	QUANTITY		
1		Captrate Solo Filter	10	20"	16"	85% See Filter Spec.	4	L55 Series E26	NO	Left	12"x54"x30"	Anslu R102	3.0/3.0	DCV-1111	1 Light 1 Fan	YES	988 LBS
2							0									NO	163 LBS

HOOD OPTIONS

HOOD NO.	TAG	OPTION
1		FIELD WRAPPER 18.00" High Front, Left, Right BACKSPLASH 80.00" High X 171.00" Long 430 SS Vertical STRUCTURAL FRONT PANEL

PERFORATED SUPPLY PLENUM(S)

HOOD NO.	TAG	POS.	LENGTH	WIDTH	HEIGHT	TYPE	RISER(S)				
							WIDTH	LENG.	DIA.	CFM	S.P.
1		Front	171"	16"	6"	MUA	12"	28"		728	0.199"
						MUA	12"	28"		728	0.199"
						MUA	12"	28"		728	0.199"
						MUA	12"	28"		728	0.199"
2		Front	48"	12"	6"	MUA	10"	20"		425	0.122"

PATENT NUMBERS

AC-PSP (United States) - US Patent 7963830 B2
AC-PSP Wall (Canada) - CA Patent 2820509
AC-PSP Island (Canada) - CA Patent 2520330

AIR BALANCE NOTE:

TOTAL EXHAUST = HOOD EXHAUST - HOOD SUPPLY
TOTAL EXHAUST = 4,244 CFM - 3,340 CFM
TOTAL EXHAUST = 904 CFM NEEDED FROM HVAC

FOR QUESTIONS, CONTACT THE
TAMPA MECHANICAL OFFICE
REG68@CAPTIVEAIRE.COM
PHONE: (813) 448-7884; FAX: (919) 227-5920

SPECIFICATION: CAPTRATE GREASE-STOP SOLO FILTER

THE CAPTRATE GREASE-STOP SOLO FILTER IS A SINGLE-STAGE FILTER FEATURING A UNIQUE S-BAFFLE DESIGN IN CONJUNCTION WITH A SLOTTED REAR BAFFLE DESIGN, TO DELIVER EXCEPTIONAL FILTRATION EFFICIENCY.

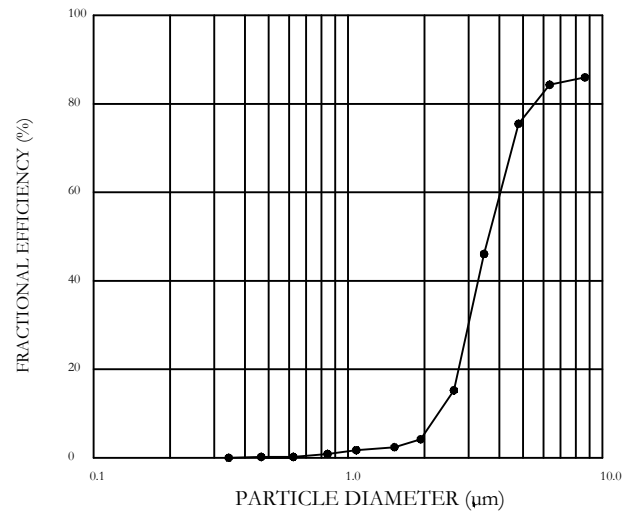
FILTER IS STAINLESS STEEL CONSTRUCTION, AND SIZED TO FIT INTO STANDARD 2-INCH DEEP HOOD CHANNEL(S).

UNITS SHALL INCLUDE STAINLESS STEEL HANDLES AND A FASTENING DEVICE TO SECURE THE TWO COMPONENTS WHEN ASSEMBLED.

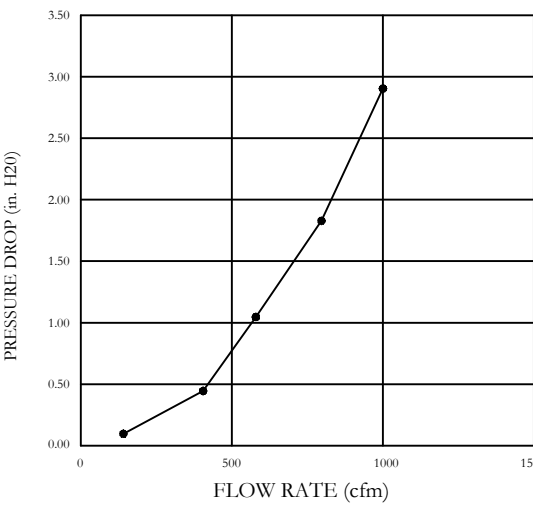
GREASE EXTRACTION EFFICIENCY PERFORMANCE SHALL REMOVE AT LEAST 75% OF GREASE PARTICLES FIVE MICRONS IN SIZE, AND 85% GREASE PARTICLES SEVEN MICRONS IN SIZE AND LARGER, WITH A CORRESPONDING PRESSURE DROP NOT TO EXCEED 1.0 INCHES OF WATER GAUGE.

THE CAPTRATE GREASE-STOP SOLO WAS TESTED TO ASTM STANDARD ASTM F2519-05.

EFFICIENCY VS. PARTICLE DIAMETER



PRESSURE DROP VS. FLOW RATE



CAPTIVE FILTERS ARE BUILT IN COMPLIANCE WITH:

NFPA #96
NSF STANDARD #2
UL STANDARD #1046
INT. MECH. CODE (IMC)
ULC-S649



REVISIONS

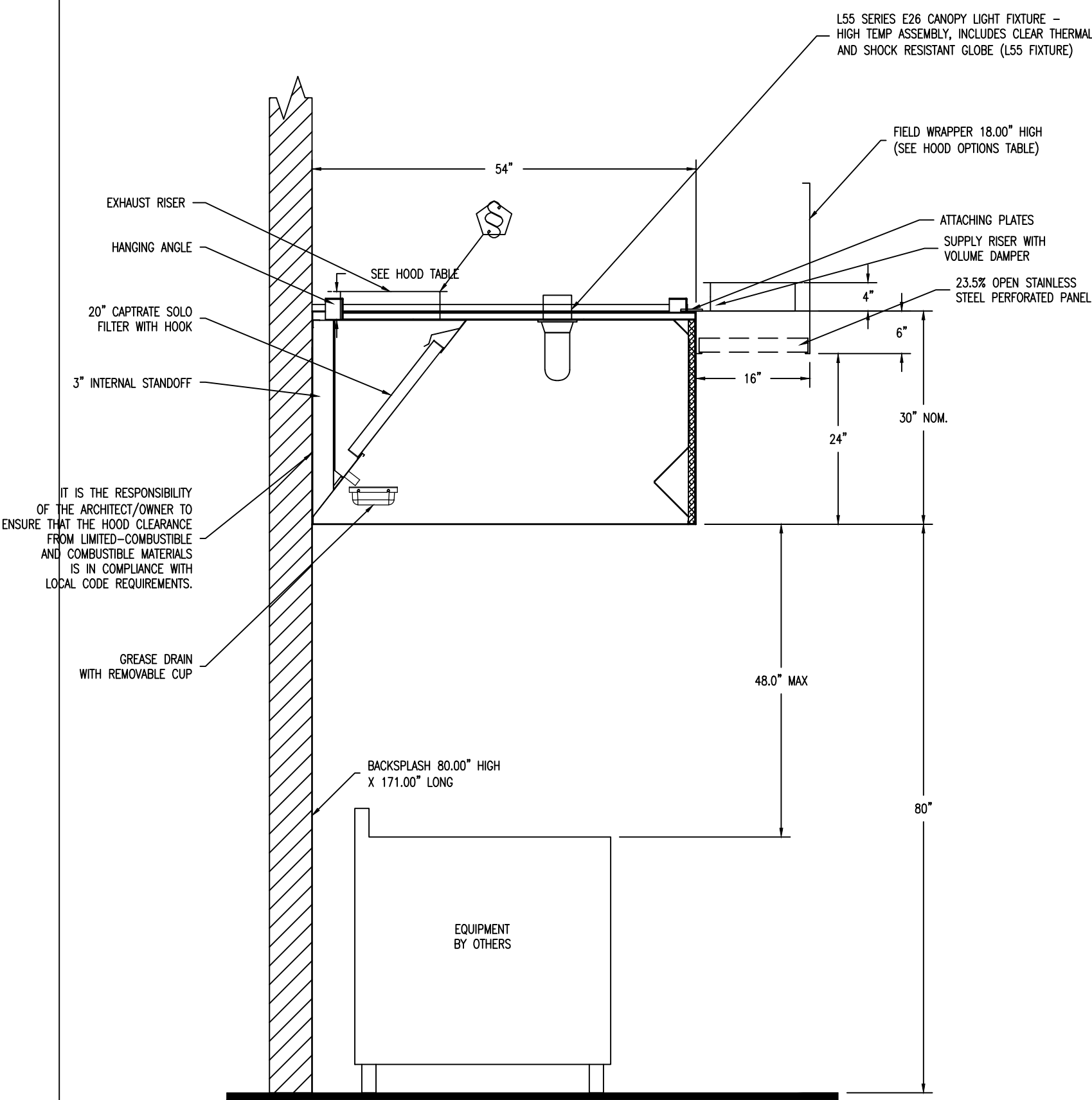
DESCRIPTION	DATE
1	
2	
3	

Southwest Florida Office
25150 Bernwood Drive, Unit 11, Bonita Springs, FL 34135 PHONE: (813) 448-7884 FAX: (919) 227-5920 EMAIL: reg68@captivaire.com

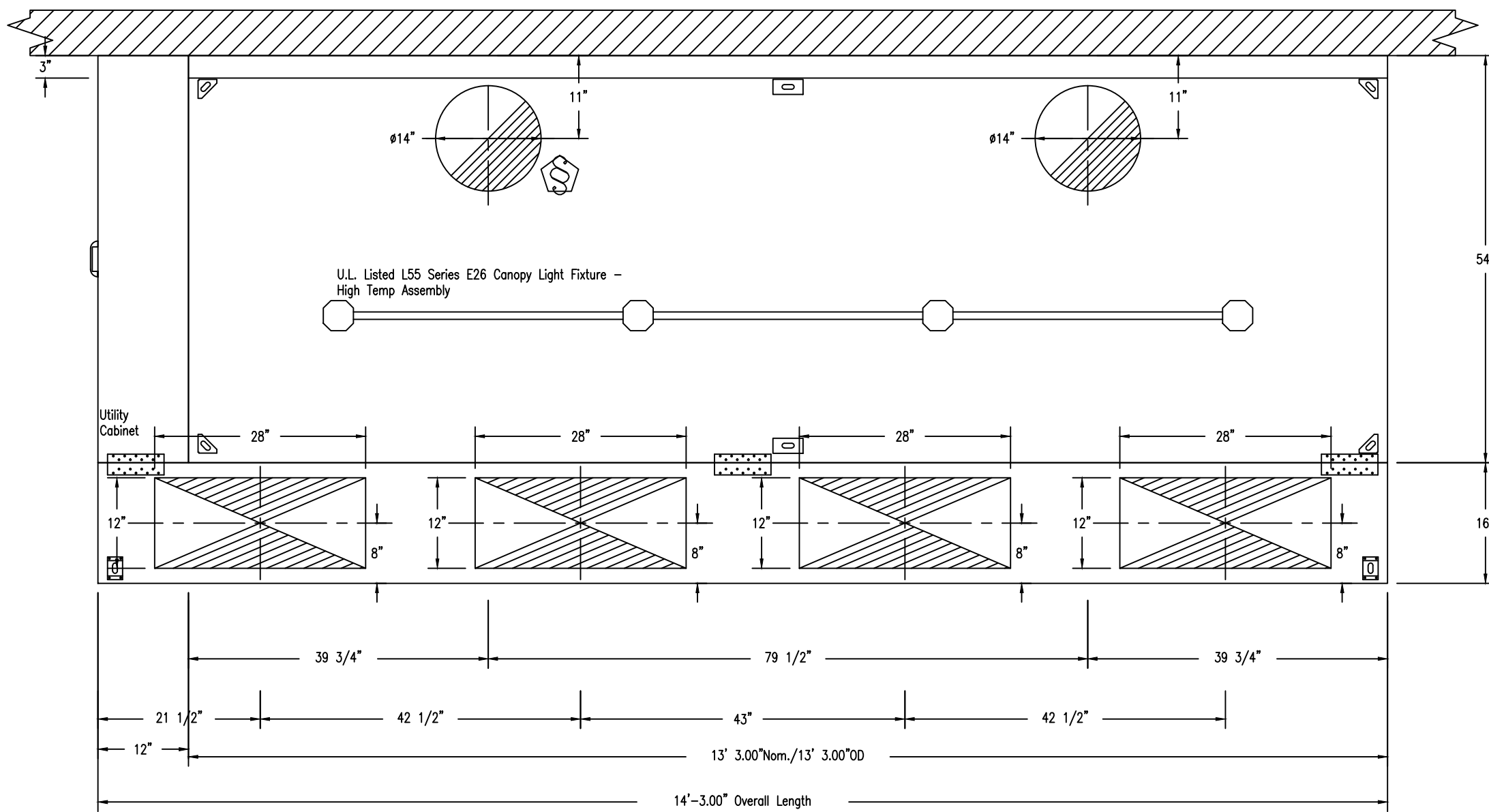
Cirella's_R2
NAPLES, FL, 34112

DATE: 4/24/2017
DWG.#: 2996357
DRAWN BY: SM-68
SCALE: 3/4" = 1'-0"
MASTER DRAWING

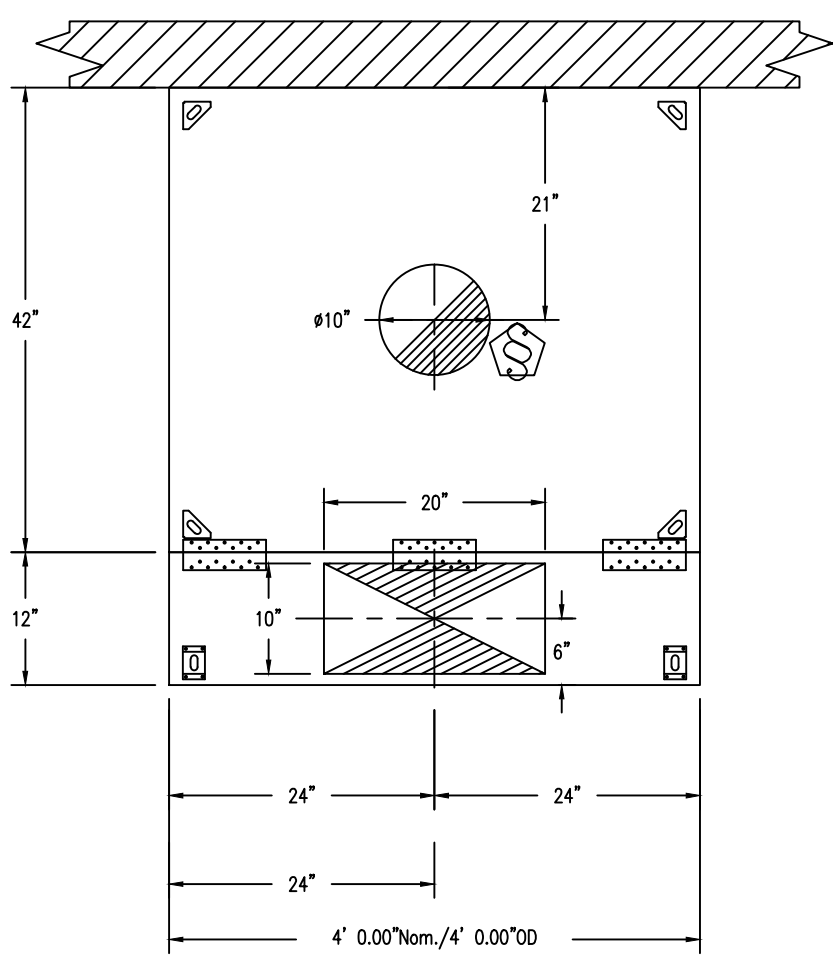
SHEET NO. 1



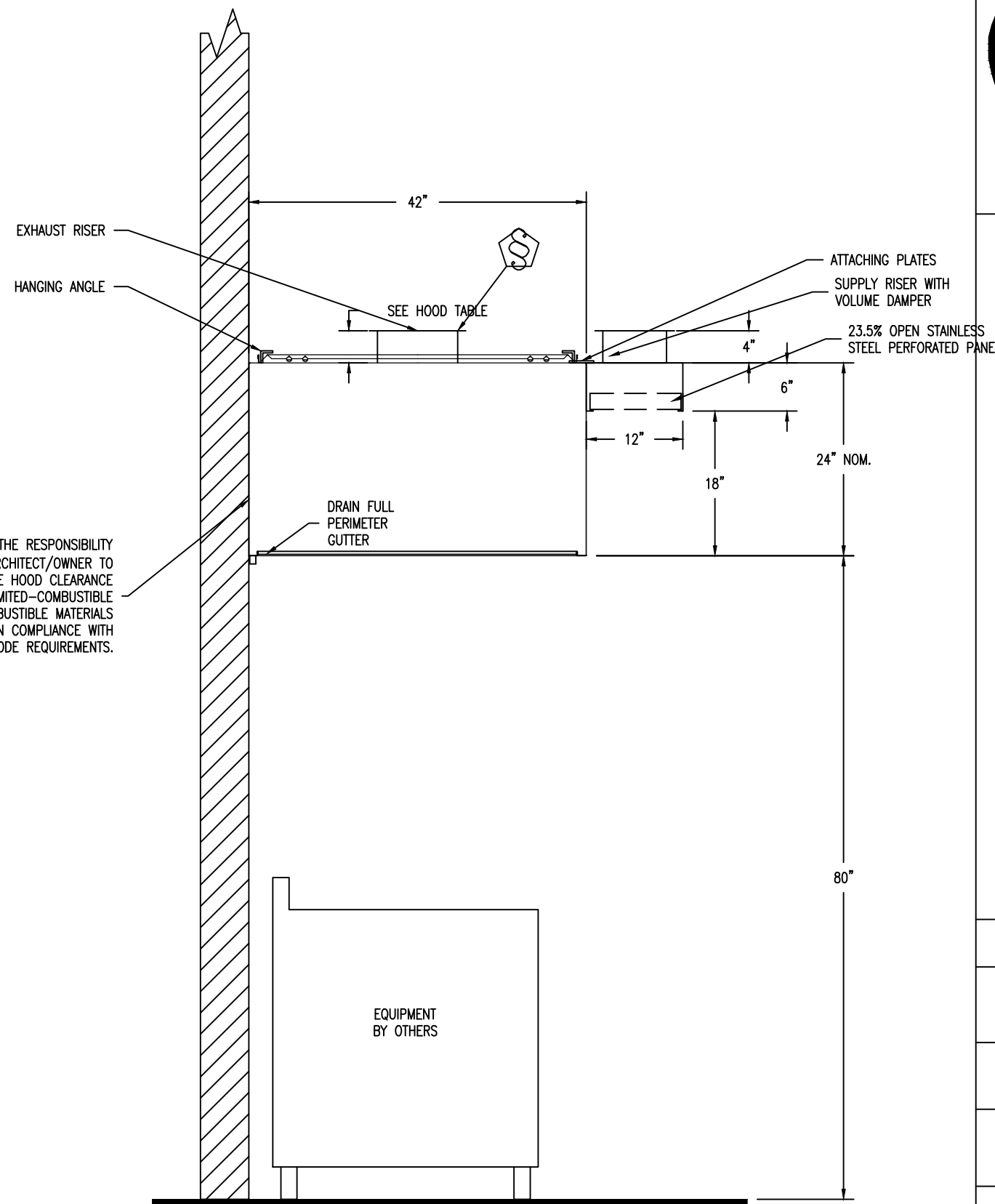
SECTION VIEW - MODEL 5430ND-2-PSP-F
HOOD - #1



PLAN VIEW - Hood #1
13' 3.00\"/>

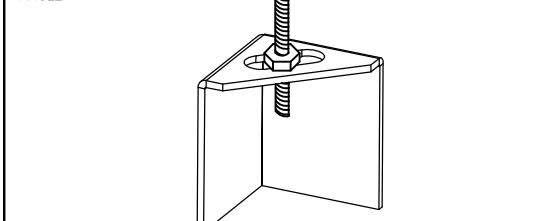


PLAN VIEW - Hood #2
4' 0.00\"/>



SECTION VIEW - MODEL 4224VHB-G-PSP-F
HOOD - #2

1/2\"/>



*HOOD AND NUTS TO BE SUPPLIED BY INSTALLING CONTRACTOR
HANGING ANGLE IS PRE-FINISHED AT FACTORY
ND-2 HANGING ANGLE DETAIL

CAPTIVE-AIRE HOODS ARE BUILT IN COMPLIANCE WITH



No. REVISIONS

1	
2	
3	

Proposed New Cirella's Restaurant
Vanderbilt Commons Building #1
Unit # 1, Vanderbilt Beach Road
Naples, Florida

8200 College Parkway
Suite 101
Ft. Myers, Florida 33901
PH: (239) 482-2121

2950 Tamiami Trail N.
Suite 16
Naples, Florida 34103
PH: (239) 304-3041

www.LOTUSarchitecture.com AA26001786

Reviewed for Code Compliance
PRBD20170518692

JOB: 4769
DATE: 03.21.17
CAD REF:

SHEET
H-1

Spelman Engineering, Inc.
1923 SE 10TH PLACE CAPE CORAL, FLORIDA 33990
PHONE (239/770-2930) FAX (239/458-9854)
email: cspelman@spelmanengineering.com
FLORIDA CA #26955

CHARLES P. SPELMAN, PE
FLA REG# 60825

PUBLICATION OR REUSE OF THESE PLANS AND SPECIFICATIONS EXPRESSLY LIMITED TO THIS PROJECT ONLY. REUSE, REPRODUCTION, OR PUBLICATION IN WHOLE OR PART IS PROHIBITED WITHOUT WRITTEN CONSENT OF THE ENGINEER. TITLE TO THE DESIGNS REMAINS WITH THE ENGINEER.

CHARLES P. SPELMAN, PE FLORIDA LICENSE #34925

EXHAUST FAN INFORMATION - Job#2996357

FAN UNIT NO.	TAG	FAN UNIT MODEL #	CFM	ESP.	RPM	H.P.	B.H.P.	Ø	VOLT	FLA	WEIGHT (LBS.)	SONES
1		DU180HFA	3644	1.600	1465	3.000	1.6890	3	208	9.5	181	23
2		DU30HFA	600	0.500	1186	0.250	0.0870	1	115	3.8	65	7.4

FAN OPTIONS

FAN UNIT NO.	TAG	OPTION (Qty. - Descr.)
1		1 - Grease Box 1 - Miami Dade Certification.
2		1 - Miami Dade Certification.
3		1 - Miami Dade Certification. 1 - 7.5 Ton 2 Circuit (2.5/5) Modular Packaged Cooling Option for Size 2 MUA (2,700 to 4,500 cfm), 208V/230V, 3 phase. Cooling Thermostat or Programmable Stat Required for Proper Operation. 1 - Full Crating For Untempered Fans 1 - Insulated Blower Section Size 1-2 Commercial 1 - Mod Package Unit AC Controls for Untempered Fans 1 - Condenser Support for Size 2 Mod Package Unit 1 - Separate 120V Wiring Package (Required and used only for DCV or Prewire with VFD) - Three Phase Only

CURB ASSEMBLIES

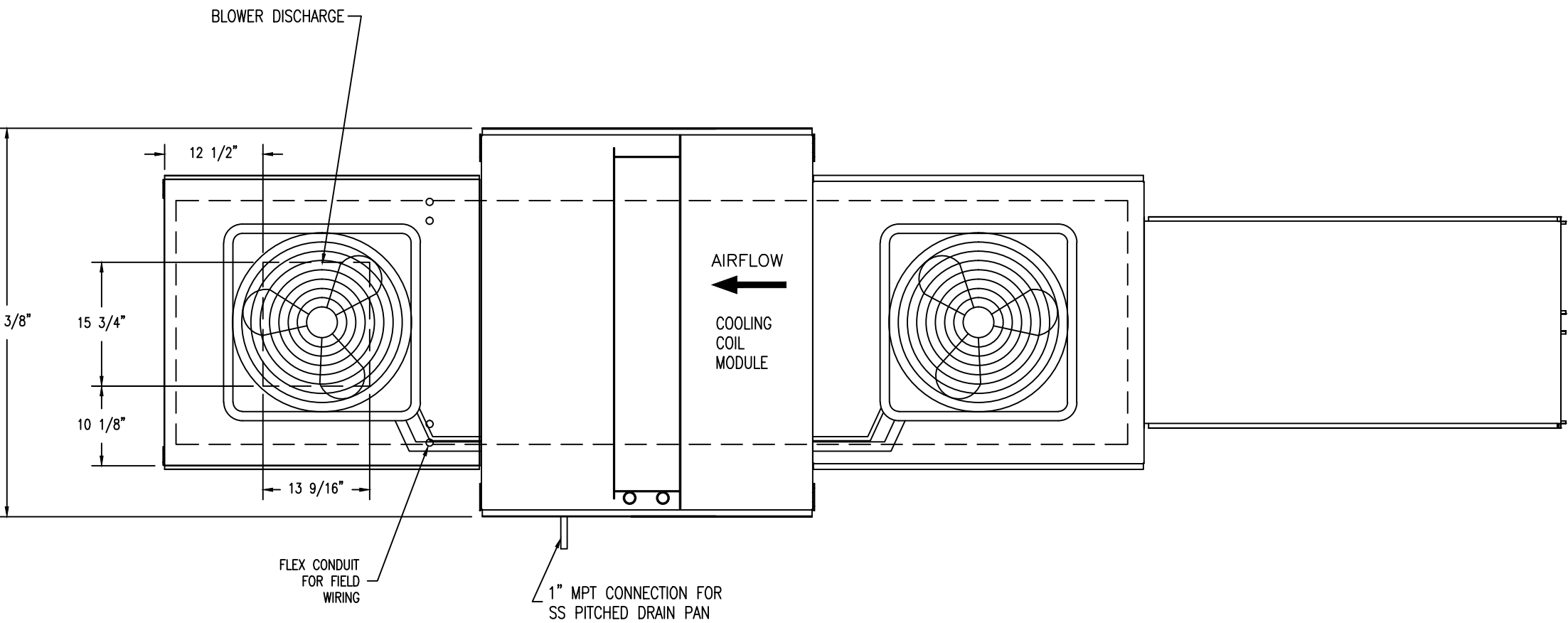
NO.	ON FAN	WEIGHT	ITEM	SIZE
1	# 1	53 LBS	Curb	26.500"W x 26.500"L x 26.000"H Vented Hinged 16 Gauge
2	# 2	27 LBS	Curb	19.500"W x 19.500"L x 20.000"H
3	# 3	133 LBS	Curb	31.000"W x 121.000"L x 20.000"H Insulated 16 Gauge MPU Curb Clips

CONDENSER DETAILS

FAN UNIT NO.	TAG	FAN UNIT MODEL #	CONDENSER NO.	TONNAGE	VOLTAGE	PHASE	FREQUENCY	MCA	RLA	MAX. FUSE SIZE	MIN. WIRE SIZE	SEER
3		A2-G12-MPU	1	5	208-230	3 PHASE	60 Hz	21.4 Amps	17.4 Amps	30 Amps	12 AWG	14
			2	2.5	208-230	3 PHASE	60 Hz	11.2 Amps	9.07 Amps	20 Amps	14 AWG	14

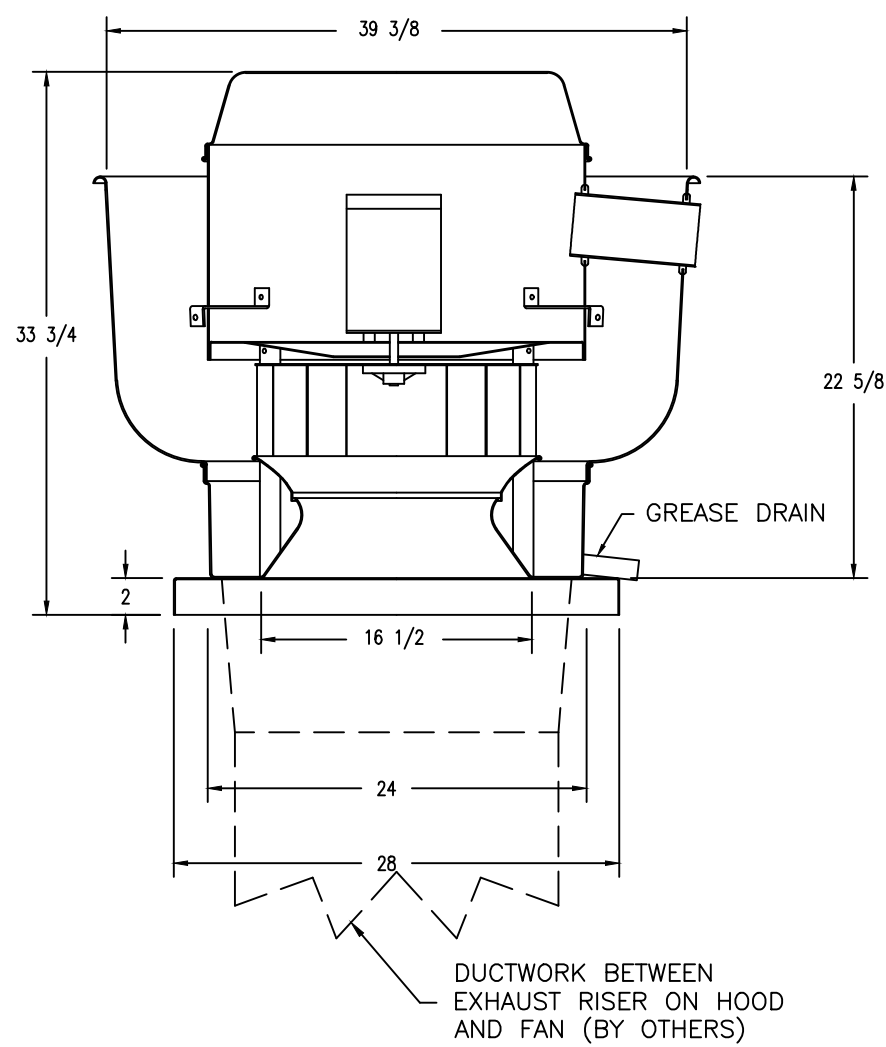
MUA FAN INFORMATION - Job#2996357

FAN UNIT NO.	TAG	FAN UNIT MODEL #	BLOWER	HOUSING	DESIGN CFM	ESP.	RPM	H.P.	B.H.P.	Ø	VOLT	FLA	COOLING COIL ENTERING DB TEMP.	COOLING COIL ENTERING WB TEMP.	COOLING COIL LEAVING DB TEMP.	COOLING COIL LEAVING WB TEMP.	COOLING COIL TOTAL CAPACITY	COOLING COIL SENSIBLE CAPACITY	COOLING COIL LATENT CAPACITY	WEIGHT (LBS.)	SONES
3		A2-G12-MPU	G12	A2	3340	0.750	881	2,000	1,2010	3	208	5.9	93.0°F	78.0°F	78.1°F	71.9°F	86.5 MBH	53.7 MBH	32.8 MBH	1334	26



FAN #3 A2-G12-MPU - SUPPLY FAN
1. SUPPLY UNIT WITH 12" BLOWER IN SIZE #2 HOUSING
2. INTAKE HOOD WITH EZ FILTERS
3. DOWN DISCHARGE - AIR FLOW RIGHT -> LEFT
4. MIAMI DADE IMPACT AND WIND LOAD CERTIFICATION - MIAMI DADE COUNTY PRODUCT CONTROL APPROVED. FLORIDA BUILDING CODE APPROVAL. EXHAUST CURBS UP TO 20" HIGH MUST BE 20 GAUGE ALUMINIZED. EXHAUST CURBS ABOVE 20" HIGH UP TO 42" HIGH MUST BE 16 GAUGE ALUMINIZED. EXHAUST RAILS LIMITED TO 10" HIGH.
5. 7.5 TON, DUAL CIRCUIT (2.5/5) MODULAR PACKAGED COOLING OPTION FOR SIZE 2 MODULAR PACKAGED UNIT. INCLUDES CONDENSER, DX COIL, FILTER/DRIER KIT, THERMAL EXPANSION VALVE, R410A REFRIGERANT, AND REFRIGERANT PIPING. (2,700 to 4,500 CFM) NOT BUILT WITH OPPOSITE SIDE CONTROLS OR OPPOSITE AIRFLOW DIRECTION. CONDENSERS REQUIRE SEPARATE 208V, 3 PHASE POWER SUPPLY. COIL = 3E21101C
6. FULL CRATING FOR UNTEMPERED FANS FOR SHIPPING.
7. INSULATED BLOWER HOUSING SIZES 1-2 COMMERCIAL MODULAR
8. CONTROL PACKAGE FOR MOD PACKAGE UNIT COOLING ONLY UNIT. INCLUDES AIRFLOW PROVING SWITCH, RTU/LINK-ACHP BOARD AND TERMINAL BLOCKS.
9. SUPPORT SHELL FOR SIZE 2 MODULAR PACKAGE UNIT. INCLUDES CONTROL VESTIBULE. INCLUDES CONDENSER SUPPORTS. DOES NOT INCLUDE RETURN AIR OR INLET AIR DAMPER.
10. SEPARATE 120VAC WIRING PACKAGE FOR MAKE-UP AIR UNITS. OPTION MUST BE SELECTED WHEN MOUNTING VFD IN PREMISE PANEL OR WITH DCV PACKAGE. PROVIDES SEPARATE 120VAC INPUT TO SUPPLY FAN. THIS 120V SIGNAL MUST BE RUN BY ELECTRON FROM DCV TO MUA SWITCH.

FAN #1 DU180HFA - EXHAUST FAN



FEATURES:

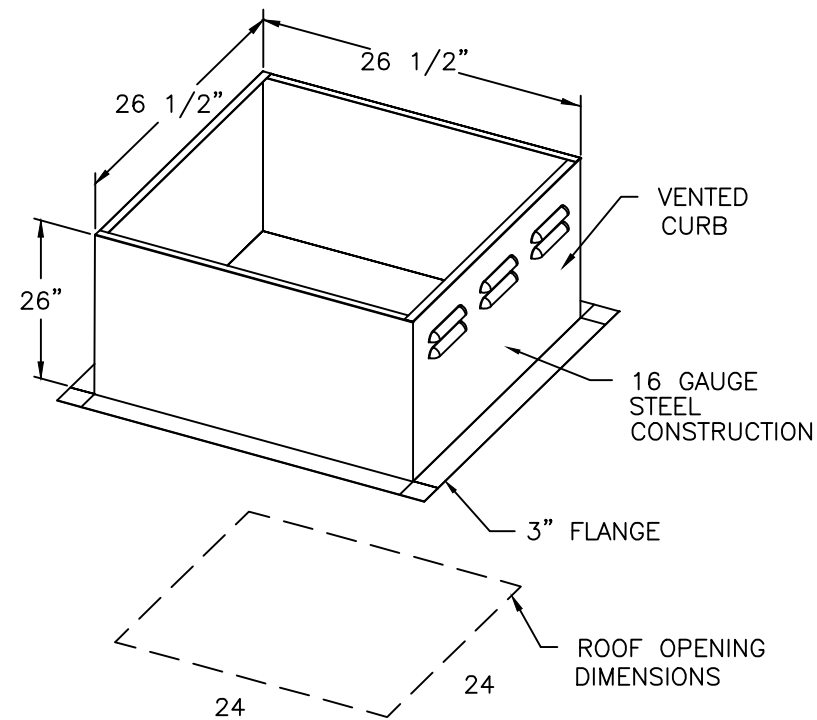
- DIRECT DRIVE CONSTRUCTION (NO BELTS/PULLEYS)
- ROOF MOUNTED FANS
- RESTAURANT MODEL
- UL705 AND UL762
- VARIABLE SPEED CONTROL
- INTERNAL WIRING
- WEATHERPROOF DISCONNECT
- THERMAL OVERLOAD PROTECTION (SINGLE PHASE)
- HIGH HEAT OPERATION 300°F (149°C)
- GREASE CLASSIFICATION TESTING

NORMAL TEMPERATURE TEST
EXHAUST FAN MUST OPERATE CONTINUOUSLY WHILE EXHAUSTING AIR AT 300°F (149°C) UNTIL ALL FAN PARTS HAVE REACHED THERMAL EQUILIBRIUM, AND WITHOUT ANY DETERIORATING EFFECTS TO THE FAN WHICH WOULD CAUSE UNSAFE OPERATION.

ABNORMAL FLARE-UP TEST
EXHAUST FAN MUST OPERATE CONTINUOUSLY WHILE EXHAUSTING BURNING GREASE VAPORS AT 600°F (316°C) FOR A PERIOD OF 15 MINUTES WITHOUT THE FAN BECOMING DAMAGED TO ANY EXTENT THAT COULD CAUSE AN UNSAFE CONDITION.

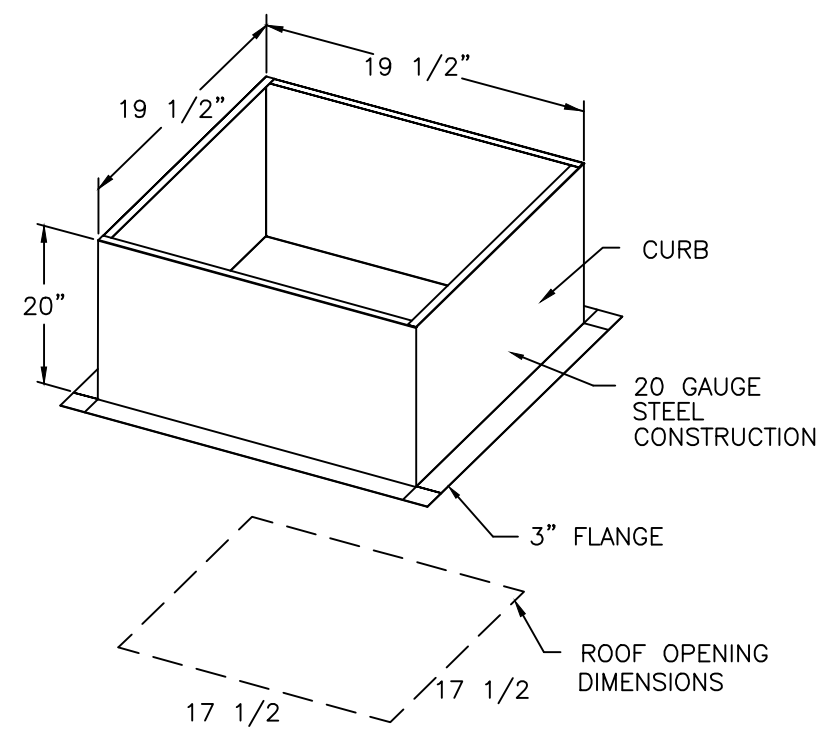
OPTIONS

GREASE BOX
MIAMI DADE CERTIFICATION.



PITCHED CURBS ARE AVAILABLE FOR PITCHED ROOFS.

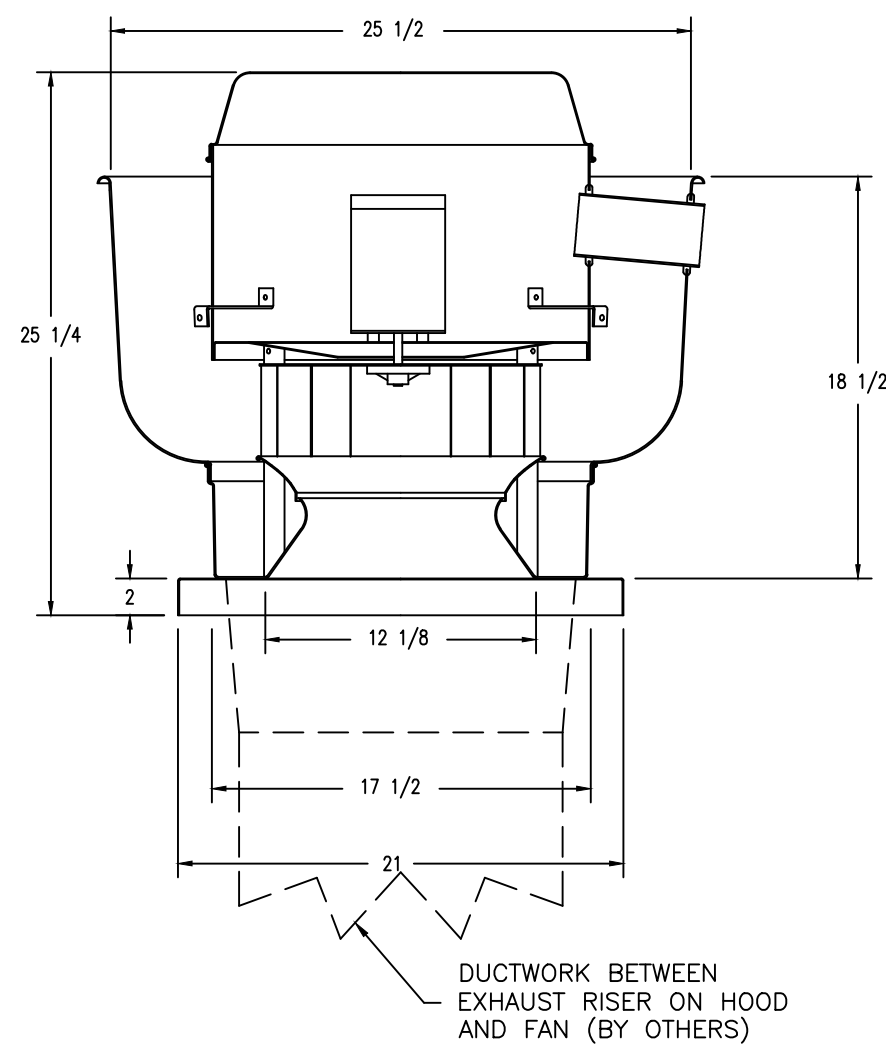
SPECIFY PITCH:
EXAMPLE: 7/12 PITCH = 30° SLOPE



PITCHED CURBS ARE AVAILABLE FOR PITCHED ROOFS.

SPECIFY PITCH:
EXAMPLE: 7/12 PITCH = 30° SLOPE

FAN #2 DU30HFA - EXHAUST FAN



FEATURES:

- DIRECT DRIVE CONSTRUCTION (NO BELTS/PULLEYS)
- ROOF MOUNTED FANS
- RESTAURANT MODEL
- UL705
- VARIABLE SPEED CONTROL
- INTERNAL WIRING
- WEATHERPROOF DISCONNECT
- THERMAL OVERLOAD PROTECTION (SINGLE PHASE)
- HIGH HEAT OPERATION 300°F (149°C)

NORMAL TEMPERATURE TEST
EXHAUST FAN MUST OPERATE CONTINUOUSLY WHILE EXHAUSTING AIR AT 300°F (149°C) UNTIL ALL FAN PARTS HAVE REACHED THERMAL EQUILIBRIUM, AND WITHOUT ANY DETERIORATING EFFECTS TO THE FAN WHICH WOULD CAUSE UNSAFE OPERATION.

OPTIONS

MIAMI DADE CERTIFICATION.

REVISIONS

NO.	DESCRIPTION	DATE:
1		
2		
3		

Southwest Florida Office
25150 Barnwood Drive, Unit 11, Bonita Springs, FL 34135 PHONE: (813) 448-7884 FAX: (813) 448-7884 EMAIL: reg86@captiveair.com

Cirella's_R2
NAPLES, FL, 34112

DATE: 4/24/2017
DWG.#: 2996357
DRAWN BY: SM-68
SCALE: 3/4" = 1'-0"
MASTER DRAWING
SHEET NO. 4

No.	REVISIONS
1	
2	
3	

Proposed New Cirella's Restaurant
Vanderbilt Commons Building #1
Unit # 1, Vanderbilt Beach Road
Naples, Florida

2950 Tamiami Trail N.
Suite 16
Naples, Florida 34103
PH: (239) 304-3041

8200 College Parkway
Suite 101
Ft. Myers, Florida 33901
PH: (239) 482-2121

www.LOTUSarchitecture.com
AA26001786

Reviewed for Code Compliance
PRBD20170518692

JOB: 4769
DATE: 03.21.17
CAD REF:

SHEET
H-2

CHARLES P. SPELMAN, PE
FLA REG #6802

Spelman Engineering, Inc.
1923 SE 10TH PLACE CAPE CORAL, FLORIDA 33990
PHONE (239/770-2930) FAX (239/458-9854)
email: cspelman@spelmanengineering.com
FLORIDA CA #26955

PUBLICATION OR REUSE OF THESE PLANS AND SPECIFICATIONS EXPRESSLY LIMITED TO THIS PROJECT ONLY. REUSE, REPRODUCTION, OR PUBLICATION IN WHOLE OR PART IS PROHIBITED WITHOUT WRITTEN CONSENT OF THE ENGINEER. TITLE TO THE DESIGNS REMAINS WITH THE ENGINEER.

CHARLES P. SPELMAN, PE FLORIDA LICENSE #34925

LOTUS Architecture Incorporated hereby reserves its common law copyright and other proprietary rights in these plans, designs, arrangements and ideas. These plans, designs and ideas are not to be reproduced, changed or copied in any form or manner whatsoever, nor are they to be assigned to any third party without first obtaining the express written permission from LOTUS Architecture Incorporated. Within dimensions on these drawings have precedence over notes and dimensions. All dimensions are given in feet and inches unless otherwise noted. All dimensions are given in feet and inches unless otherwise noted. All dimensions are given in feet and inches unless otherwise noted.