

MARK	FIXTURE TYPE	MAKE - MODEL
L-1	LAVATORY/UNDERMOUNT	AMERICAN STANDARD "OVALYN" 9
L-2	LAVATORY/A.D.A.	AMERICAN STANDARD "DECLYN" 9
WC-1	WATER CLOSET - FLUSH VALVE/ WALL MOUNTED	AMERICAN STANDARD "AFWALL" 3
WC-2	WATER CLOSET - FLUSH VALVE, A.D.A./WALL MOUNTED	AMERICAN STANDARD "AFWALL" 3
UR	URINAL	AMERICAN STANDARD - "LYNBROOK"
EWC	ELECTRIC WATER COOLER	ELKAY LZSTL08LC WALL MOUNT BARE COOLER
FD	FLOOR DRAIN	ZURN #ZN-415 TYPE S STRAINER, 7"x7"
HB	HOSE BIBB	WOODFORD MODEL 24 ANTI-SIPHON H
MS	MOP SINK	FIAT TERRAZO MOP BASIN TSBOR11 STAINLESS STEEL CAP ON THRES
RD	ROOF DRAIN	ZURN Z-100 15" DOME
FS	FLOOR SINK (SQUARE)	ZURN #ZN-1900

1	WHITE FIXTURE COLOR.
2	1.0 G.P.F.
3	1.6 G.P.F.
4	0.5 GAL/ MIN.
5	MOUNT @ HANDICAP HT.
6	PROVIDE W/ WALL CARRIER SYSTEM BY ZURN SUITABLE FOR WALL TYPE AND MATCH
7	PROVIDE W/ CEILING ACCESS PANEL FOR SERVICE ACCESS TO HAMMER ARRESTOR
8	PROVIDE W/ A.D.A. COMPLIANT FIXTURE ASSEMBLY.
9	PROVIDE W/ U/C TRAP GUARD & HOT & COLD WATER SUPPLY LINE GUARDS.
10	CONTRACTOR RESPONSIBLE FOR COORDINATION OF URINAL HEIGHT PER APPLICABLE
11	UNLIMITED & ACCESSIBLE HEIGHT. COORDINATE A.D.A. WITH ARCHITECT

GAS WATER H			
MARK	MANUFACTURER	MODEL	INPUT (MBTUH)
QWH-1	A.O. SMITH	BTH-199	199
R			
1	NATURAL GAS FIRED WATER HEATER.		
2	PROVIDE WITH 5 GALLON THERMAL EXPANSION TANK.		
3	PROVIDE WITH CIRCULATING PUMP CP-1 EQUAL TO BELL & GOSSETT "BRONZE FOX"		

PLUMBING FIXTURE SCHEDULE		
	MATERIAL	ACCESSORIES
482.000	VITREOUS CHINA	AMERICAN STANDARD METERING FAUCET 134Q 227 WATTS LFUS-8 UNDER COUNTER MIXING VALVE TO TEMPERATURE TO 105°
321.075	VITREOUS CHINA	AMERICAN STANDARD METERING FAUCET 134Q 227 WATTS LFUS-8 UNDER COUNTER MIXING VALVE TO TEMPERATURE TO 105°
351.101	VITREOUS CHINA	PROVIDE WITH OPEN FRONT SEAT WITH STAINLESS S HINGES, SLOAN ROYAL 110 MANUAL FLUSH V
351.101	VITREOUS CHINA	PROVIDE WITH OPEN FRONT SEAT WITH STAINLESS S HINGES, SLOAN ROYAL 110 MANUAL FLUSH V
6601.012	VITREOUS CHINA	PROVIDE WITH SLOAN ROYAL 186 MANUAL FLUSH V WALL CARRIER
RIER FREE	STAINLESS STEEL	PROVIDE ELKAY EKAPPEZL CANT APRON
STRAINER	CI BODY, NB TOP	PROVIDE TRAP PRIMER FROM LAVATORY SINK TAI BATHROOMS ONLY
NOSE BIBB	BRASS VALVE BODY	METAL REMOVABLE T HANDLE KEYS NO PLASTIC HANDLES
00 WITH HOLD	MOLDED STONE	PROVIDE FIAT 830AA MOP SERVICE BASIN FITTING, 8 AND BRACKET, 12398B BUMPERGUARDS, MSG WALL L ZURN 2843M1-RC FAUCET
	CI BODY, NB TOP	
	CI BODY, NB TOP	12"x12" W/HALF GRATE, 6" SUMP, REFER TO PLANS FOR MOUNT FLOOR SINK FLUSH TO FLOOR FOR USE AS PLU

HING FIXTURE SIZE WHERE NEEDED. CARRIER TO BE FLOOR MOUNTED MODEL.

3.

4.

5.

6.

7.

8.

9.

10.

11.

12.

13.

14.

15.

16.

17.

18.

19.

20.

21.

22.

23.

24.

25.

26.

27.

28.

29.

30.

31.

32.

33.

34.

35.

36.

37.

38.

39.

40.

41.

42.

43.

44.

45.

46.

47.

48.

49.

50.

51.

52.

53.

54.

55.

56.

57.

58.

59.

60.

61.

62.

63.

64.

65.

66.

67.

68.

69.

70.

71.

72.

73.

74.

75.

76.

77.

78.

79.

80.

81.

82.

83.

84.

85.

86.

87.

88.

89.

90.

91.

92.

93.

94.

95.

96.

97.

98.

99.

100.

101.

102.

103.

104.

105.

106.

107.

108.

109.

110.

111.

112.

113.

114.

115.

116.

117.

118.

119.

120.

121.

122.

123.

124.

125.

126.

127.

128.

129.

130.

131.

132.

133.

134.

135.

136.

137.

138.

139.

140.

141.

142.

143.

144.

145.

146.

147.

148.

149.

150.

151.

152.

153.

154.

155.

156.

157.

158.

159.

160.

161.

162.

163.

164.

165.

166.

167.

168.

169.

170.

171.

172.

173.

174.

175.

176.

177.

178.

179.

180.

181.

182.

183.

184.

185.

186.

187.

188.

189.

190.

191.

192.

193.

194.

195.

196.

197.

198.

199.

200.

201.

202.

203.

204.

205.

206.

207.

208.

209.

210.

211.

212.

213.

214.

215.

216.

217.

218.

219.

220.

221.

222.

223.

224.

225.

226.

227.

228.

229.

230.

231.

232.

233.

234.

235.

236.

237.

238.

239.

240.

241.

242.

243.

244.

245.

246.

247.

248.

249.

250.

251.

252.

253.

254.

255.

256.

257.

258.

259.

260.

261.

262.

263.

264.

265.

266.

267.

268.

269.

270.

271.

272.

273.

274.

275.

276.

277.

278.

279.

280.

281.

282.

283.

284.

285.

286.

287.

288.

289.

290.

291.

292.

293.

294.

295.

296.

297.

298.

299.

300.

301.

302.

303.

304.

305.

306.

307.

308.

309.

310.

311.

312.

313.

314.

315.

316.

317.

318.

319.

320.

321.

322.

323.

324.

325.

326.

327.

328.

329.

330.

331.

332.

333.

334.

335.

336.

337.

338.

339.

340.

341.

342.

343.

344.

345.

346.

347.

348.

349.

350.

351.

352.

353.

354.

355.

356.

357.

358.

359.

360.

361.

362.

363.

364.

365.

366.

367.

368.

369.

370.

371.

372.

373.

374.

375.

376.

377.

378.

379.

380.

381.

382.

383.

384.

385.

386.

387.

388.

389.

390.

391.

392.

393.

394.

395.

396.

397.

398.

399.

400.

401.

402.

403.

404.

405.

406.

407.

408.

409.

410.

411.

412.

413.

414.

415.

416.

417.

418.

419.

420.

421.

422.

423.

424.

425.

426.

427.

428.

429.

430.

431.

432.

433.

434.

435.

436.

437.

438.

439.

440.

441.

442.

443.

444.

445.

446.

447.

448.

449.

450.

451.

452.

453.

454.

455.

456.

457.

458.

459.

460.

461.

462.

463.

464.

465.

466.

467.

468.

469.

470.

471.

472.

473.

474.

475.

476.

477.

478.

479.

480.

481.

482.

483.

484.

485.

486.

487.

488.

489.

490.

491.

492.

493.

494.

495.

496.

497.

498.

499.

500.

501.

502.

503.

504.

505.

506.

507.

508.

509.

510.

511.

512.

513.

514.

515.

516.

517.

518.

519.

520.

521.

522.

523.

524.

EATER SCHEDULE

RECOVERY @ 80F RISE (GPH)	THERMAL EFFICIENCY (%)	STORAGE TANK (GALLONS)	HEATER VENT	REMARKS
288	94%	100	3" PVC	1,2,3

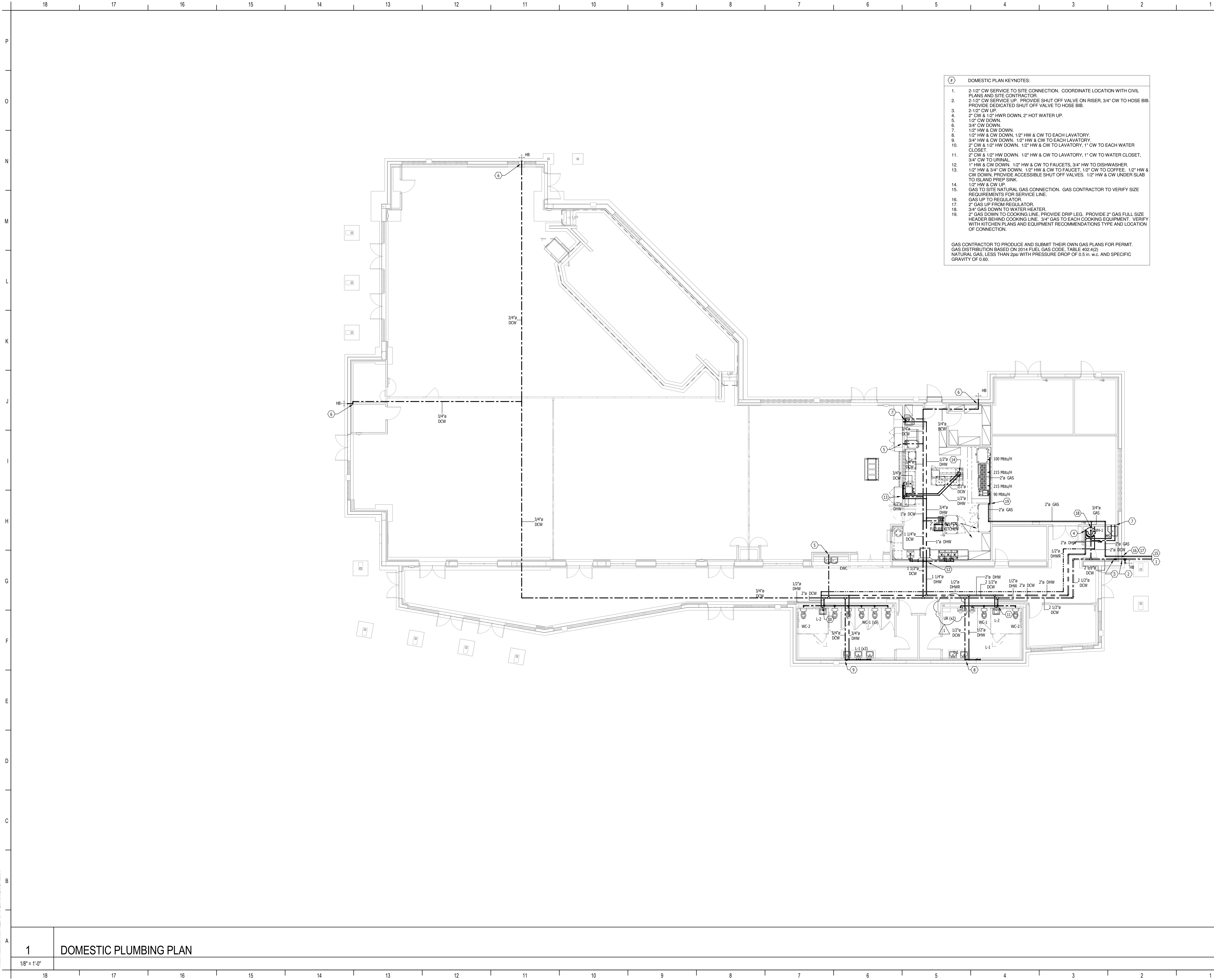
REMARKS

NBF-33, 120-1-60, 125 WATTS, 15 GPM @ 7 FT. HEAD.

	REMARKS	TRAP	COLD	HOT	SANITARY
PROVIDE LIMIT WATER	1,4	1 1/4"	1/2"	1/2"	2"
PROVIDE LIMIT WATER	1,4,5,6,8,9	1 1/4"	1/2"	1/2"	2"
TEEL CHECK ALVE	1,3	INTEGRAL	1"	-	3"
TEEL CHECK ALVE	1,3,5	INTEGRAL	1"	-	3"
ALVE AND	1,2,6,19	INTEGRAL	3/4"	-	2"
I	7,8	1 1/4"	1/2"	-	2"
PIECE IN	-	PVC	-	-	3"
	-	-	3/4"	-	-
32AA HOSE GUARDS AND	-	3"	1/2"	1/2"	3"
	-	-	-	-	LINE SIZE
OR PIPE SIZE, LOOR DRAIN	-	-	-	-	LINE SIZE

ACCESSIBLE HEIGHT. WHERE RESTROOM CONTAINS MULTIPLE URINALS, AT LEAST ONE SHALL BE

<div><div>SCHENKEL SHULTZ</div><div>□ □ □ ARCHITECTURE □ □ □</div></div> <div>1617 Hendry Street Suite 405 Fort Myer, FL 33901 voice 239.206.4976 fax schenkelshultz.com SS Lic. No. -AA-C000937</div> <div>CONFIDENTIAL COPYRIGHT 2014 SCHENKEL & SHULTZ INC. SEE WWW.SCHENKELSHULTZ.COM/COPYRIGHT FOR POLICY AND INFORMATION</div>		
<div><div><div><div>BB</div><div>BURGESS BRANT</div><div>CONSULTING ENGINEERS</div></div><div>12995 S. CLEVELAND AVENUE SUITE 229 FORT MYERS, FL 33907 (239) 274-0020 (239) 274-0021 (FAX) EMAIL: BBCE@BURGESSBRANT.COM CERTIFICATE OF AUTHORIZATION #6032 JOSEPH W BROUGHTON, PE #63949 MARK A BRANT, PE #54692</div></div><div>SEAL</div><div></div></div>		
comm no.:		
drawn Author		
checked: Checker		
Revision Schedule		
No.	Description	Date
<div>ST PETER THE APOSTLE CATHOLIC CHURCH NEW PARISH CENTER</div> <div>5130 RATTLESNAKE HAMMOCK RD NAPLES, FL 34113</div>		
<div>PLUMBING NOTES, SCHEDULES, & DETAILS</div> <div>P001</div>		
Submittal: 100% CONSTRUCTION DOCUMENTS		Issue Date: 12-16-16



18 17 16 15 14 13 12 11 10 9 8 7 6 5 4 3 2 1

1
1/8" = 1'-0"

DOMESTIC PLUMBING PLAN

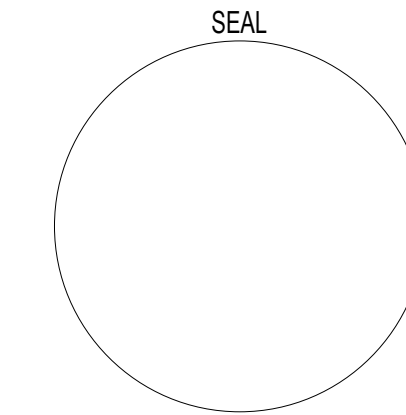
SCHENKELSHULTZ
ARCHITECTURE

1617 Hendry Street
Suite 405
Fort Myer, FL 33901
voice 239.206.4976
fax
schenkelshultz.com
SS Lic. No. -AA-C000937

CONFIDENTIAL COPYRIGHT 2014 SCHENKEL & SHULTZ, INC.
SEE WWW.SCHENKELSHULTZ.COM/COPYRIGHT FOR POLICY AND INFORMATION

BURGESS BRANT
CONSULTING ENGINEERS
12995 S. CLEVELAND AVENUE SUITE 229
FORT MYERS, FL 33907
(239) 274-0020 (239) 274-0021 (FAX)
EMAIL: BBCE@BURGESSBRANT.COM
CERTIFICATE OF AUTHORIZATION #6032
JOSEPH W. BROUGHTON, PE #63949
MARK A. BRANT, PE #54692

comm no.:
drawn Author
checked Checker



Revision Schedule		
No.	Description	Date
1	PLANS REVIEW COMMENTS	02/10/2017

ST PETER THE APOSTLE
CATHOLIC CHURCH
NEW PARISH CENTER

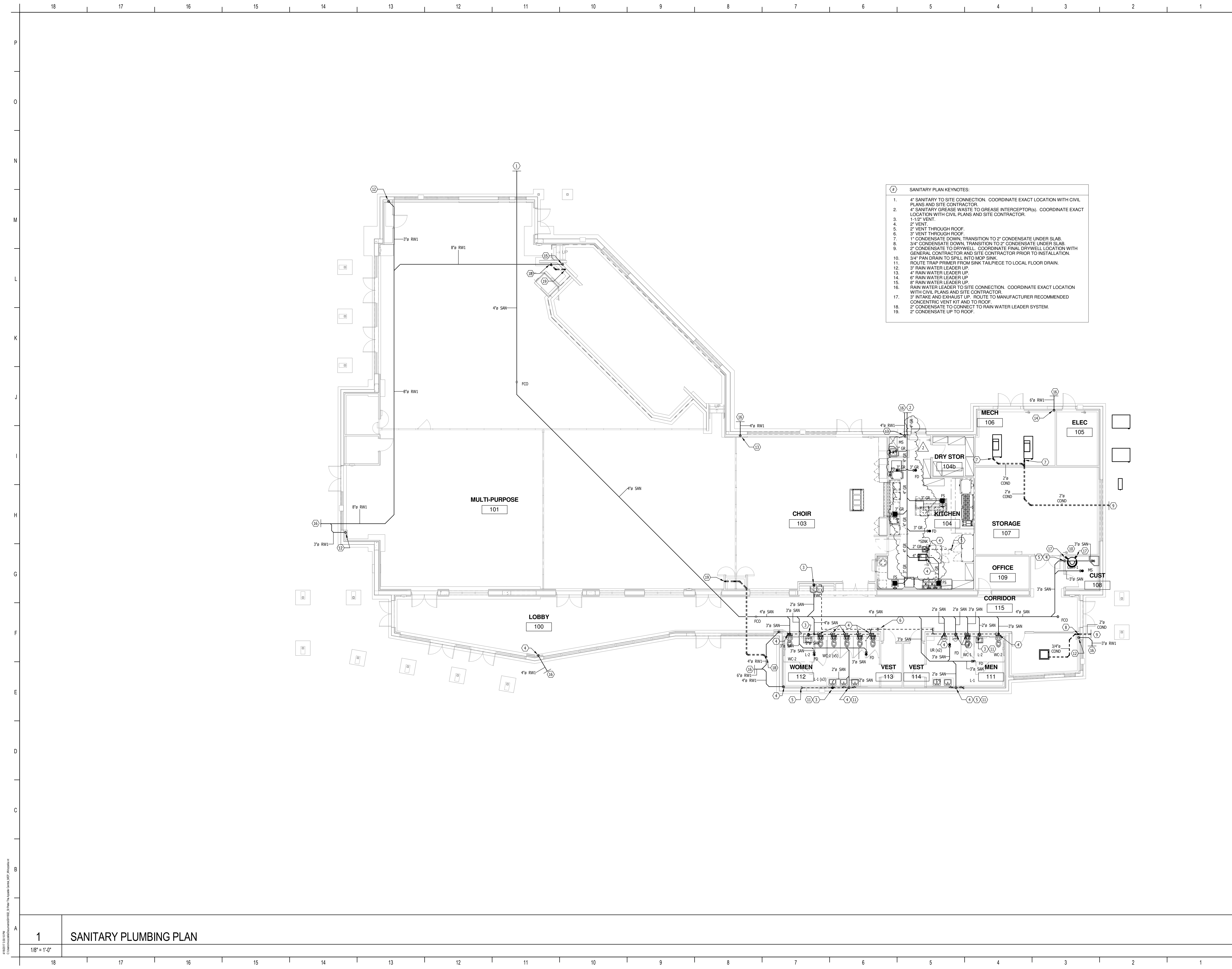
5130 RATTLESNAKE HAMMOCK RD
NAPLES, FL 34113

DOMESTIC WATER PLAN

P201

Submital:
100% CONSTRUCTION DOCUMENTS
Issue Date:
12-16-16

RELEASED FOR CONSTRUCTION



- 4 SANITARY PLAN KEYNOTES:
1. 4" SANITARY TO SITE CONNECTION. COORDINATE EXACT LOCATION WITH CIVIL PLANS AND SITE CONTRACTOR.
 2. 4" SANITARY GREASE WASTE TO GREASE INTERCEPTOR(S). COORDINATE EXACT LOCATION WITH CIVIL PLANS AND SITE CONTRACTOR.
 3. 1-1/2" VENT.
 4. 2" VENT.
 5. 2" VENT THROUGH ROOF.
 6. 3" VENT THROUGH ROOF.
 7. 1" CONDENSATE DOWN, TRANSITION TO 2" CONDENSATE UNDER SLAB.
 8. 3/4" CONDENSATE DOWN, TRANSITION TO 2" CONDENSATE UNDER SLAB.
 9. 2" CONDENSATE TO DRYWELL. COORDINATE FINAL DRYWELL LOCATION WITH GENERAL CONTRACTOR AND SITE CONTRACTOR PRIOR TO INSTALLATION.
 10. 3/4" PAN DRAIN TO SPILL INTO MOP SINK.
 11. ROUTE TRAP PRIMER FROM SINK TAILPIECE TO LOCAL FLOOR DRAIN.
 12. 3" RAIN WATER LEADER UP.
 13. 4" RAIN WATER LEADER UP.
 14. 6" RAIN WATER LEADER UP.
 15. 8" RAIN WATER LEADER UP.
 16. RAIN WATER LEADER TO SITE CONNECTION. COORDINATE EXACT LOCATION WITH CIVIL PLANS AND SITE CONTRACTOR.
 17. 3" INTAKE AND EXHAUST UP. ROUTE TO MANUFACTURER RECOMMENDED CONCENTRIC VENT KIT AND TO ROOF.
 18. 2" CONDENSATE TO CONNECT TO RAIN WATER LEADER SYSTEM.
 19. 2" CONDENSATE UP TO ROOF.

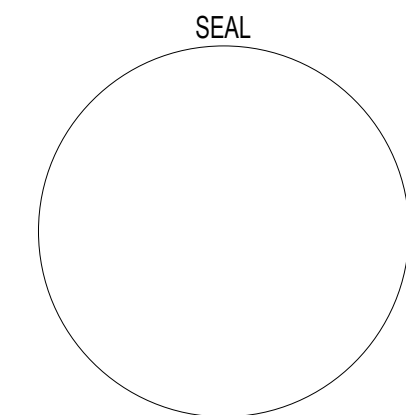
SCHENKELSHULTZ
ARCHITECTURE

1617 Hendry Street
Suite 405
Fort Myer, FL 33901
voice 239.206.4976
fax
schenkelshultz.com
SS Lic. No. -AA-C000937

CONFIDENTIAL COPYRIGHT 2014 SCHENKEL & SHULTZ, INC.
SEE WWW.SCHENKELSHULTZ.COM/COPYRIGHT FOR POLICY AND INFORMATION

BURGESS BRANT
CONSULTING ENGINEERS
12995 S. CLEVELAND AVENUE SUITE 229
FORT MYERS, FL 33907
(239) 274-0020 (239) 274-0021 (FAX)
EMAIL: BBCE@BURGESSBRANT.COM
CERTIFICATE OF AUTHORIZATION #6032
JOSEPH W. BROUGHTON, P.E. #63949
MARK A. BRANT, P.E. #54692

comm no.:
drawn Author
checked Checker



Revision Schedule		
No.	Description	Date
1	PLANS REVIEW COMMENTS	10/19/2017

ST PETER THE APOSTLE
CATHOLIC CHURCH
NEW PARISH CENTER

5130 RATTLESNAKE HAMMOCK RD
NAPLES, FL 34113

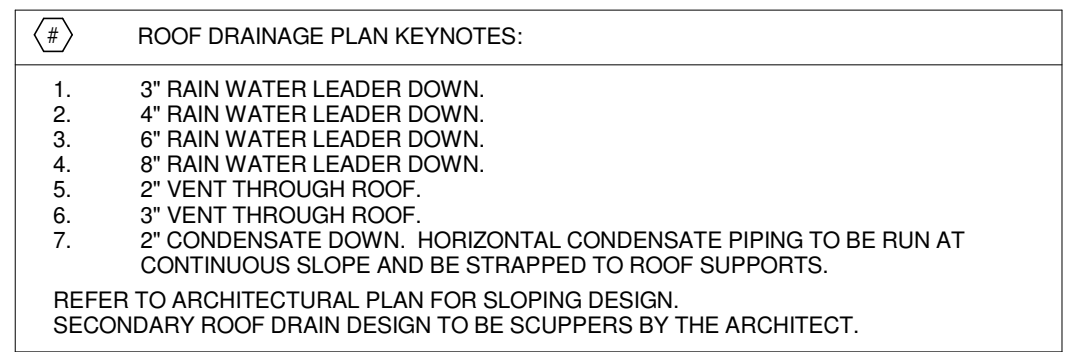
SANITARY DRAINAGE PLAN

P301

Submital:
100% CONSTRUCTION DOCUMENTS
Issue Date:
12-16-16

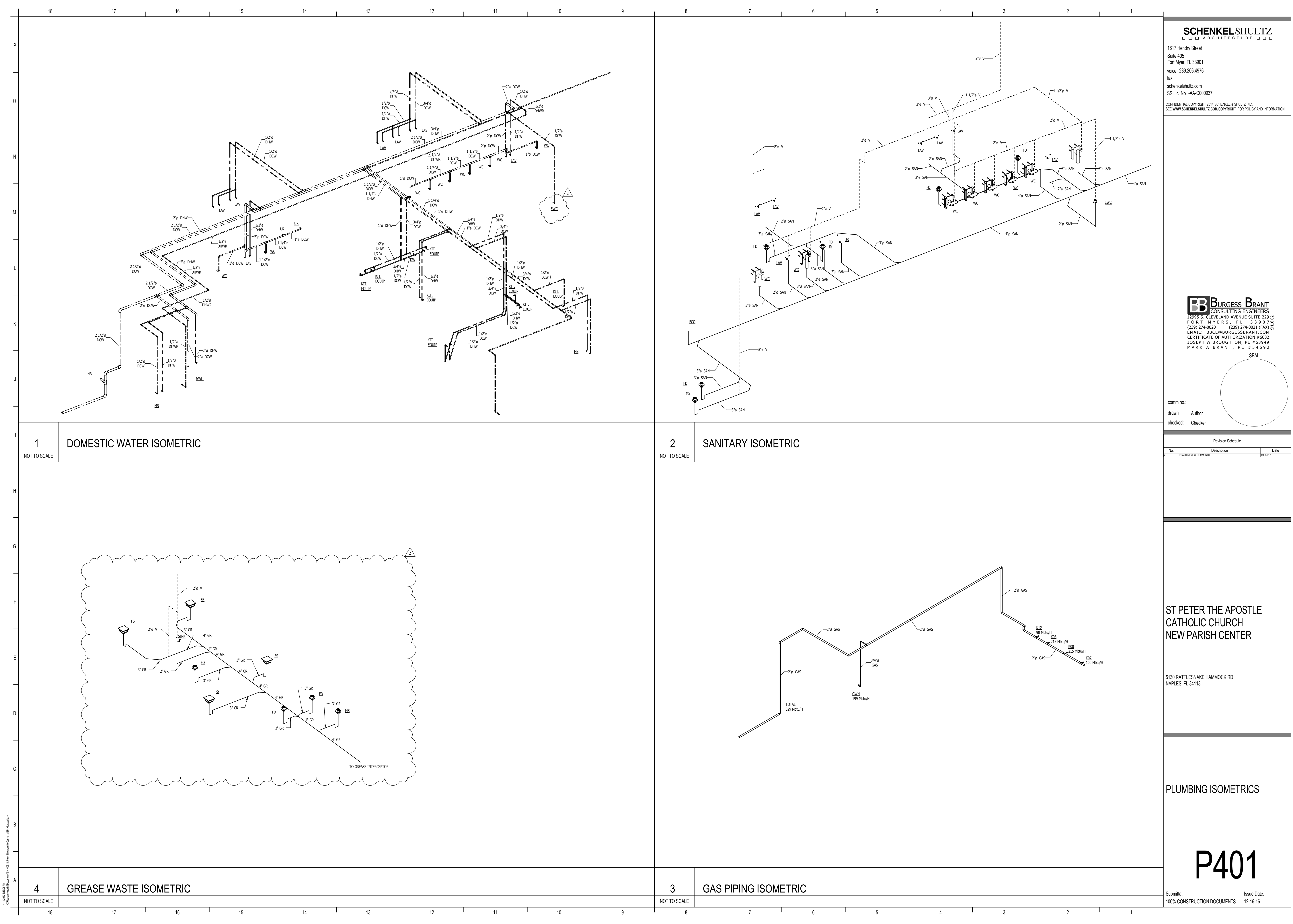
10/19/2017 10:10 AM
C:\Users\jshultz\OneDrive\Documents\St Peter the Apostle\Drawings\Sanitary\Sanitary Plumbing Plan.dwg

RELEASED FOR CONSTRUCTION



Submittal:	Issue Date:
100% CONSTRUCTION DOCUMENTS	12-16-16

RELEASED FOR CONSTRUCTION



SCHENKELSHULTZ
ARCHITECTURE

1617 Hendry Street
Suite 405
Fort Myer, FL 33901
voice 239.206.4976
fax
schenkelshultz.com
SS Lic. No. -AA-C000937

CONFIDENTIAL COPYRIGHT 2014 SCHENKEL & SHULTZ, INC.
SEE WWW.SCHENKELSHULTZ.COM/COPYRIGHT FOR POLICY AND INFORMATION

BURGESS BRANT
CONSULTING ENGINEERS

12995 S. CLEVELAND AVENUE SUITE 229
FORT MYERS, FL 33907
(239) 274-0020 (239) 274-0021 (FAX)
EMAIL: BBCE@BURGESSBRANT.COM
CERTIFICATE OF AUTHORIZATION #6032
JOSEPH W. BROUGHTON, P.E. #63949
MARK A. BRANT, P.E. #54692

comm no.:
drawn: Author
checked: Checker

Revision Schedule		
No.	Description	Date
1	PLANS REVIEW COMMENTS	10/19/2017

ST PETER THE APOSTLE
CATHOLIC CHURCH
NEW PARISH CENTER

5130 RATTLESNAKE HAMMOCK RD
NAPLES, FL 34113

PLUMBING ISOMETRICS

P401

Submital:
100% CONSTRUCTION DOCUMENTS

Issue Date:
12-16-16

RELEASED FOR CONSTRUCTION