



DEPARTMENT OF REGULATORY AND ECONOMIC RESOURCES (RER)
BOARD AND CODE ADMINISTRATION DIVISION

NOTICE OF ACCEPTANCE (NOA)

MIAMI-DADE COUNTY
PRODUCT CONTROL SECTION
11805 SW 26 Street, Room 208
T (786) 315-2590 F (786) 315-2599
www.miamidade.gov/economy

Sunshine Windows Manufacturing, Inc.

1745 W. 33rd Place

Hialeah, FL 33012

SCOPE:

This NOA is being issued under the applicable rules and regulations governing the use of construction materials. The documentation submitted has been reviewed and accepted by Miami-Dade County RER-Product Control Section to be used in Miami-Dade County and other areas where allowed by the Authority Having Jurisdiction (AHJ).

This NOA shall not be valid after the expiration date stated below. The Miami-Dade County Product Control Section (In Miami-Dade County) and/ or the AHJ (in areas other than Miami-Dade County) reserve the right to have this product or material tested for quality assurance purposes. If this product or material fails to perform in the accepted manner, the manufacturer will incur the expense of such testing and the AHJ may immediately revoke, modify, or suspend the use of such product or material within their jurisdiction. RER reserves the right to revoke this acceptance, if it is determined by Miami-Dade County Product Control Section that this product or material fails to meet the requirements of the applicable building code.

This product is approved as described herein, and has been designed to comply with the Florida Building Code, including the High Velocity Hurricane Zone.

DESCRIPTION: Series "2001" 8'-0" Outswing Aluminum French Door - L.M.I.

APPROVAL DOCUMENT: Drawing No. FD01-13, titled "Series 2001 Aluminum French Door - Impact Resistant Glass, sheets 01 through 08 of 08, dated 04/02/08, with the latest revision "1" dated 01/20/15, prepared by manufacturer, signed and sealed by Francisco Hernandez, P. E., bearing the Miami-Dade County Product Control Section Revision stamp with the Notice of Acceptance number and Expiration date by the Miami-Dade County Product Control Section.

MISSILE IMPACT RATING: Large and Small Missile Impact Resistant

LABELING: Each unit shall bear a permanent label with the manufacturer's name or logo, city, state, series, and following statement: "Miami-Dade County Product Control Approved", unless otherwise noted herein.

RENEWAL of this NOA shall be considered after a renewal application has been filed and there has been no change in the applicable building code negatively affecting the performance of this product.

TERMINATION of this NOA will occur after the expiration date or if there has been a revision or change in the materials, use, and/ or manufacture of the product or process. Misuse of this NOA as an endorsement of any product, for sales, advertising or any other purposes shall automatically terminate this NOA. Failure to comply with any section of this NOA shall be cause for termination and removal of NOA.

ADVERTISEMENT: The NOA number preceded by the words Miami-Dade County, Florida, and followed by the expiration date may be displayed in advertising literature. If any portion of the NOA is displayed, then it shall be done in its entirety.

INSPECTION: A copy of this entire NOA shall be provided to the user by the manufacturer or its distributors and shall be available for inspection at the job site at the request of the Building Official.

This NOA revises NOA No. 14-0109.06 and consists of this page 1 and evidence pages E-1 and E-2, and Green Sustainable Attributes (GSA) page G-1 as well as approval document mentioned above.

The submitted documentation was reviewed by **Jaime D. Gascon, P. E.**



J. Gascon
4/15/15

NOA No. 15-0204.05
Expiration Date: May 08, 2018
Approval Date: April 23, 2015
Page 1

NOTICE OF ACCEPTANCE: EVIDENCE SUBMITTED

A. DRAWINGS

1. Manufacturer's die drawings and sections.
(Submitted under previous NOA's No. 's 14-0109.06 and 02-1104.03)
2. Drawing No. **FD01-13**, titled "Series 2001 Aluminum French Door - Impact Resistant Glass, sheets 01 through 08 of 08, dated 04/02/08, with the latest revision "1" dated 01/20/15, prepared by manufacturer, signed and sealed by Francisco Hernandez, P. E.

B. TESTS

1. Test report on:
 - 1) Air Infiltration Test, per FBC, TAS 202-94
 - 2) Uniform Static Air Pressure Test, Loading per FBC TAS 202-94
 - 3) Water Resistance Test, per FBC, TAS 202-94
 - 4) Large Missile Impact Test per FBC, TAS 201-94
 - 5) Cyclic Wind Pressure Loading per FBC, TAS 203-94
 - 6) Forced Entry Test, Side-Hinged Door Systems, per FBC, chapter 2411 3.2.1, TAS 202-94 and per AAMA 1304-02along with marked-up drawings and installation diagram of an Aluminum swinging Glass Door, prepared by Fenestration Testing Laboratory, Inc., Test Report No. **FTL-7262**, dated 05/15/13, signed and sealed by Marlin D. Brinson, P. E.
(Submitted under previous NOA No. 14-0109.06)
2. Test report on:
 - 1) Air Infiltration Test, per FBC, TAS 202-94
 - 2) Uniform Static Air Pressure Test, Loading per FBC TAS 202-94
 - 3) Water Resistance Test, per FBC, TAS 202-94
 - 4) Large Missile Impact Test per FBC, TAS 201-94
 - 5) Cyclic Wind Pressure Loading per FBC, TAS 203-94
 - 6) Forced Entry Test, Side-Hinged Door Systems, per FBC, chapter 2411 3.2.1, TAS 202-94 and per AAMA 1304-02along with marked-up drawings and installation diagram of an Aluminum swinging Glass Door, prepared by Fenestration Testing Laboratory, Inc., Test Report No. **FTL-3399**, dated 08/16/02, signed and sealed by Joseph C. Chan, P. E.
(Submitted under previous NOA No. 02-1104.03)

C. CALCULATIONS

1. Anchor verification calculations and structural analysis, complying with the **Florida Building Code 5th Edition (2014)**, prepared, dated 01/20/15, signed and sealed by Francisco Hernandez, P. E.
2. **Glazing complies with ASTM E1300-04/ 09**

D. QUALITY ASSURANCE

1. Miami-Dade Department of Regulatory and Economic Resources (RER).



Jaime D. Gascon, P. E.
Product Control Section Supervisor
NOA No. 15-0204.05
Expiration Date: May 08, 2018
Approval Date: April 23, 2015

NOTICE OF ACCEPTANCE: EVIDENCE SUBMITTED

E. MATERIAL CERTIFICATIONS


1. Notice of Acceptance No. 14-0916.10 issued to **Kuraray America, Inc.** for their "Kuraray PVB Glass Interlayer" expiring on 12/11/16.

F. STATEMENTS

1. Statement letter of conformance and complying with **FBC 5th Edition (2014)** and with **AAMA/ WDMA/ CSA 101/ I.S. 2/ A440**, issued, dated 01/28/15, signed and sealed by Francisco Hernandez, P. E.
2. Department of State Certification of **SUNSHINE WINDOWS MANUFACTURING CORPORATION, INC.** as a for profit corporation, active and organized under the laws of the State of Florida, dated 11/24/14 and e-filed by the Secretary of State.
3. Statement letter of conformance and complying with **FBC-2010** and with **AAMA/ WDMA/ CSA 101/ I.S. 2/ A440**, issued, dated 12/05/13, signed and sealed by Francisco Hernandez, P. E.
(Submitted under previous NOA No. 14-0109.06)
4. Statement letter of no financial interest and independence, issued, dated 12/05/13, signed and sealed by Francisco Hernandez, P. E.
(Submitted under previous NOA No. 14-0109.06)
5. Laboratory compliance letter prepared by Fenestration Testing Laboratory, Inc., for Test Report **FTL-7262**, dated 05/15/13, signed & sealed by Marlin D. Brinson, P. E.
(Submitted under previous NOA No. 14-0109.06)
6. Laboratory addendum letter prepared by Fenestration Testing Laboratory, Inc., for Test Report No. **FTL-3399**, dated 04/24/03, signed and sealed Joseph C. Chan, P. E.
(Submitted under previous NOA No. 02-1104.03)
7. Laboratory compliance letter prepared by Fenestration Testing Laboratory, Inc., for Test Report No. **FTL-3399**, dated 08/16/02, signed and sealed Joseph C. Chan, P. E.
(Submitted under previous NOA No. 02-1104.03)

G. OTHERS

1. Notice of Acceptance No. 14-0109.06, issued to Sunshine Windows Manufacturing, Inc. for their Series "2001 French 8-Ft. Outswing Aluminum Glazed Door - L.M.I.", approved on 05/08/14 and expiring on 05/08/18.
2. NFRC U-Factor, SHGC, VT & Condensation Resistance Computer Simulation Report on: **DDFR** "Test Procedure for Measuring the Steady State Thermal Transmittance of Fenestration Systems" of the series 2001 Aluminum glazed outswing French door at all members, along with attached Description Table Abbreviations in Appendix, submittal Form and Drawings, marked-up by Fenestration Testing Laboratory, Inc., Simulation Report No. **FTL-7625**, pages 01 to 05 of 05, including Miami-Dade County NOA No. 14-0109.06 approval drawings, sheets 01 to 08 of 08, dated 12/03/13 and signed by Jose Sanchez, NFRC Certified Simulator-In-Responsible-Charge (CSIRC).
(Submitted under previous NOA No. 14-0109.06)


Jaime D. Gascon, P. E.
Product Control Section Supervisor
NOA No. 15-0204.05
Expiration Date: May 08, 2018
Approval Date: April 23, 2015

NOTICE OF ACCEPTANCE: EVIDENCE SUBMITTED

I. GREEN SUSTAINABLE ATTRIBUTES (GSA)

SCOPE: This document is solely for the purpose of verification of Sustainable Attributes of construction materials. The documentation submitted has been reviewed by Miami-Dade County, Department of Regulatory and Economic Resources (RER), Product Control Section (PCS).

(Submitted under previous NOA No. 14-0109.06)

G.8 – U-FACTOR (THERMAL TRANSMITTANCE) BTU/HR-FT²-°F					
G.9 – SHGC-FACTOR (SOLAR HEAT GAIN COEFFICIENT) BTU/HR-FT²					
ID No.	Simulation Report No.:	Product Description	Glazing Components:	G.8: U-Value	G.9: SHGC
01-00	FTL-7625	DDFR	3/16 Clear	1.07	0.57
01-01			3/16 Solar Bronze	1.07	0.46
01-02			3/16 Solar Gray	1.07	0.43
01-03			3/16 Solex	1.07	0.45
01-04			1/4 Clear	1.07	0.56
01-05			1/4 Solar Bronze	1.07	0.44
01-06			1/4 Solar Gray	1.07	0.41
01-07			1/4 Solex	1.07	0.43
03-00			1/8-SB60/ 0.090 PVB 1/8 clr.	1.03	0.32
04-00			1/8 Solar gray/ 0.090 PVB 1/8-SB60	1.03	0.31
05-00			1/8 Solar gray/ 0.090 PVB 1/8-SB70XL	1.03	0.27

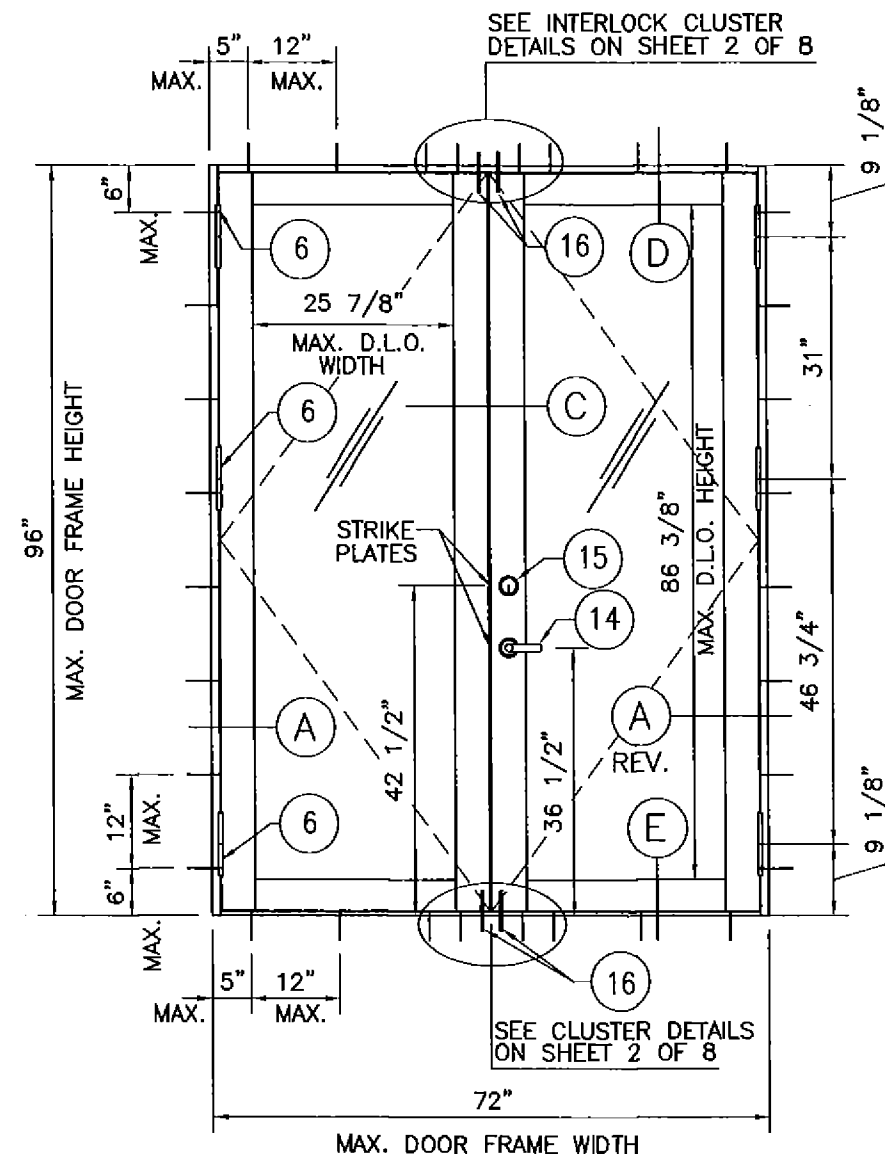
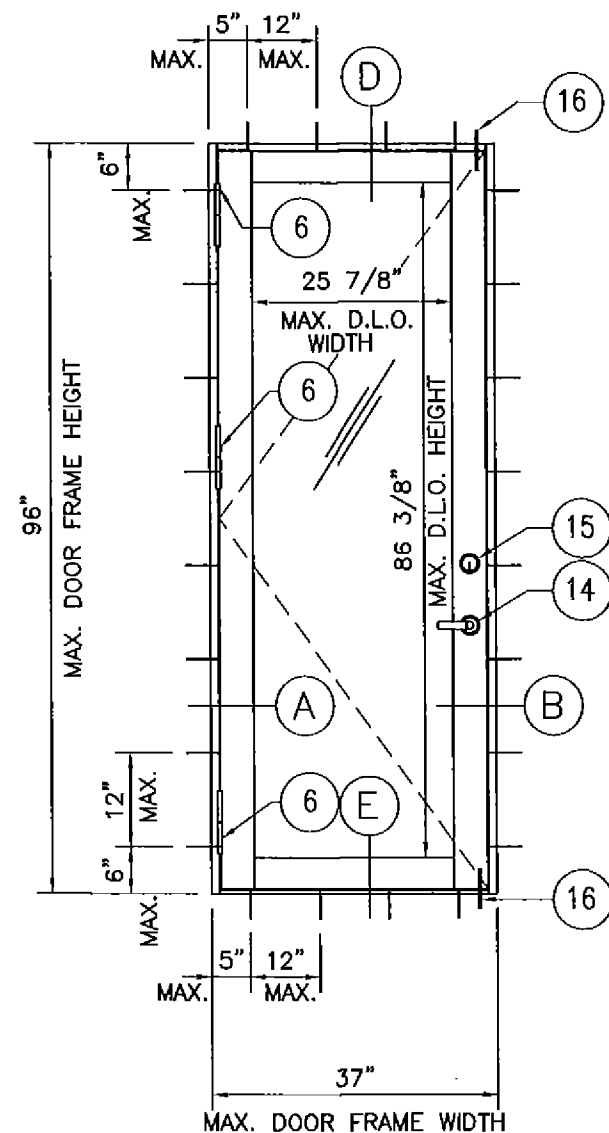
(Submitted under previous NOA No. 14-0109.06)

Legend	
Abbreviations:	Description:
PVB	Poly Vinyl Interlayer
clr.	Clear Glass
SB60	PPG Solarban 60 or 70 @ #2 Surface Typical
SB70XL	PPG Solarban 60 or 70 @ #2 Surface Typical

(Submitted under previous NOA No. 14-0109.06)



Jaime D. Gascon, P. E.
Product Control Section Supervisor
NOA No. 15-0204.05
Expiration Date: May 08, 2018
Approval Date: April 23, 2015



ELEVATIONS

INDEX OF DRAWINGS

- 1 OF 8 : DOOR ELEVATIONS, DESIGN PRESSURES CHART, GENERAL NOTES AND INDEX OF DRAWINGS.
- 2 OF 8 : INTERLOCK CLUSTERS DETAILS
- 3 OF 8 : TYPICAL HEAD SECTIONS.
- 4 OF 8 : TYPICAL JAMB SECTIONS.
- 5 OF 8 : TYPICAL SILL SECTIONS.
- 6 OF 8 : HORIZONTAL SECTIONS & INSTALLATION NOTES.
- 7 OF 8 : VERTICAL SECTIONS & MATERIAL LIST.
- 8 OF 8 : CORNER DETAILS.

DESIGN PRESSURES			
MAX. DOOR FRAME HEIGHT	DOOR LEAF WIDTH (NOMINAL)	DESIGN PRESSURE (PSF)	
		EXT. (+)	INT. (-)
8'-0"	3'-0"	77.13	77.13
	2'-6" *	80.00	89.13
6'-8"	3'-0"	80.00	90.00
	2'-6" *	80.00	90.00

* - FOR DOOR LEAF UNDER 3'-0 SEE NOTE 11.

FLUSH BOLTS:

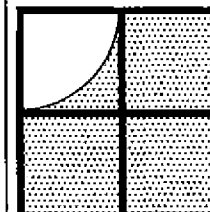
- 1.- TOTAL OF 4 (2 AT ACTIVE LEAF AND 2 AT INACTIVE LEAF AT HEAD AND AT SILL OF EACH).
- 2.- ALL DOOR FLUSH BOLTS SHALL BE ENGAGED IN ORDER TO ACHIEVE THE DESIGN PRESSURES SHOWN ON CHART.

GENERAL NOTES:

- 1.- THIS PRODUCT MEETS THE REQUIREMENTS OF FBC 5TH EDITION (2014).
- 2.- SHUTTERS ARE NOT REQUIRED.
- 3.- REFERENCE TEST REPORT FTL - 7262 DATED ON 4/15/2013.
- 4.- FOR INSTALLATION REFER TO INSTALLATION NOTES ON SHEET 6 OF 8. SEE CLUSTERS DETAILS ON SHEET 2 OF 8 AND ALSO TYPICAL DETAILS ON SHEETS 3, 4 AND 5 OF 8.
- 5.- 1X OR 2X WOOD BUCKS NOT INCLUDED IN THE SCOPE OF THIS PRODUCT APPROVAL SHALL BE PROPERLY ATTACHED TO SUSTAIN AND TRANSFER THE LOADS IMPOSED BY THE GLAZING SYSTEM TO THE STRUCTURE AND SHALL BE APPROVED BY THE BUILDING OFFICIAL PRIOR TO DOOR INSTALLATION.
- 6.- WOOD HOST STRUCTURE SHALL BE SOUTHERN YELLOW PINE G = 0.55 OF GREATER DENSITY.
- 7.- CONCRETE / MASONRY STRUCTURE FOR UNIT ATTACHMENT SHALL COMPLY WITH THE FOLLOWING REQUIREMENTS:
 - CONCRETE STRENGTH $F_c'28 = 3000$ PSI MIN.
 - CMU AS PER ASTM C90. CMU MUST BE 8-INCH THICK, NORMAL WEIGHT BLOCKS WITH A MINIMUM COMPRESSIVE STRENGTH OF 1.9 KSI.
 - FILLED CMU $F_m' = 2000$ PSI MIN.
- 8.- THE THICKNESS OF THE ALUMINUM HOST STRUCTURE SHALL NOT BE LESS THAN 1/8". ALUMINUM SHALL BE 6063-T6.
- 9.- ALUMINUM IN CONTACT WITH DISSIMILAR MATERIALS SHALL BE PROTECTED (BY OTHERS) AS SPECIFIED IN FBC 5TH EDITION (2014).
- 10.- STEEL HOST STRUCTURE SHALL NOT BE LESS THAN 18 GAUGE. STEEL SHALL BE $F_y = 36$ KSI MIN.
- 11.- DOORS REQUIRING FULL USER PASSAGE SHALL COMPLY WITH EGRESS REQUIREMENTS OF FBC 5TH EDITION (2014).
- 12.- COLONIAL MUNTINS CAN BE APPLIED.
- 13.- SEE FRAME CORNERS AND PANEL CORNERS DETAILS ON SHEET 8 OF 8.
- 14.- USE NON-SHRINK, NON-METALIC HYDRAULIC CEMENT GROUT PER ASTM C1107/C1107M STANDARD SPECIFICATION FOR PACKAGED DRY.

PRODUCT REVISED
is complying with the Florida
Building Code
Acceptance No. 15-0204-05
Expiration Date 03/08/2018
By: Francisco Hernandez
Miami Dade Product Control

FRANCISCO HERNANDEZ
FLORIDA PE # 51393

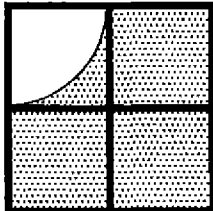


Sunshine Windows
Manufacturing, Inc.
1745 W. 33rd Place
Hialeah, Florida 33012
Ph: (305)364-9952
Fax: (305)828-5118

SERIES 2001 ALUMINUM
OUTSWING FRENCH DOOR
LARGE MISSILE IMPACT RESISTANT

No	DATE	REVISION	UPDATED FOR 2014 FBC
1	01-20-15		

DRAWING No.
FD01-13
DATE: 05/16/13
SCALE: N.T.S.
SHEET 1 OF 8



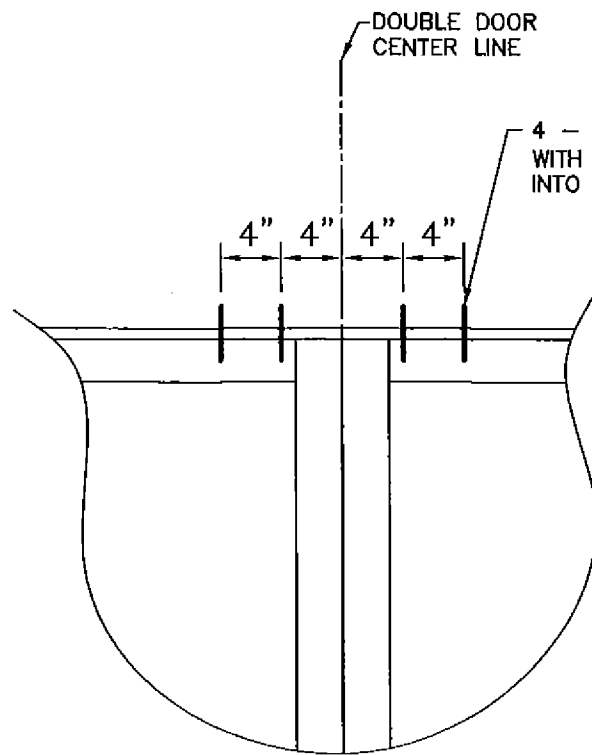
Sunshine Windows
Manufacturing, Inc.

1745 W. 33rd Place
Hialeah, Florida 33012
Ph: (305)364-9952
Fax: (305)828-5118

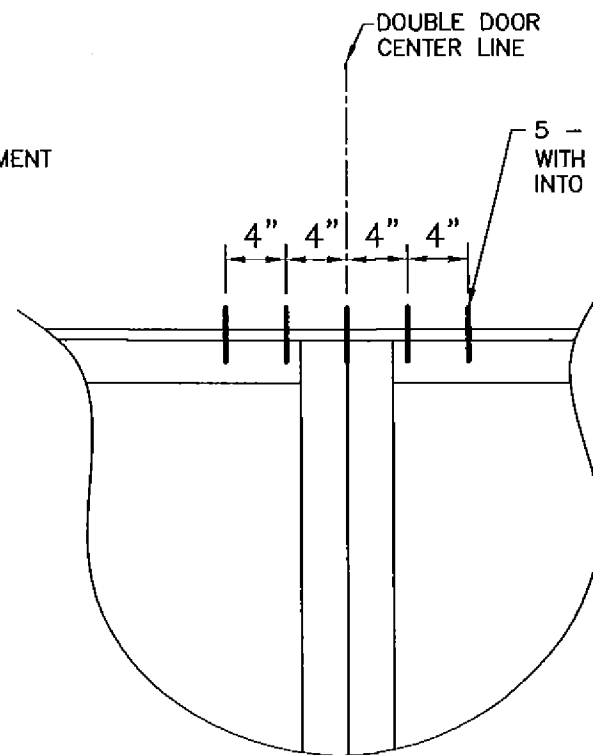
**SERIES 2001 ALUMINUM
OUTSWING FRENCH DOOR
LARGE MISSILE IMPACT RESISTANT**

No	DATE	REVISION
1	01-20-15	UPDATED FOR 2014 FBC

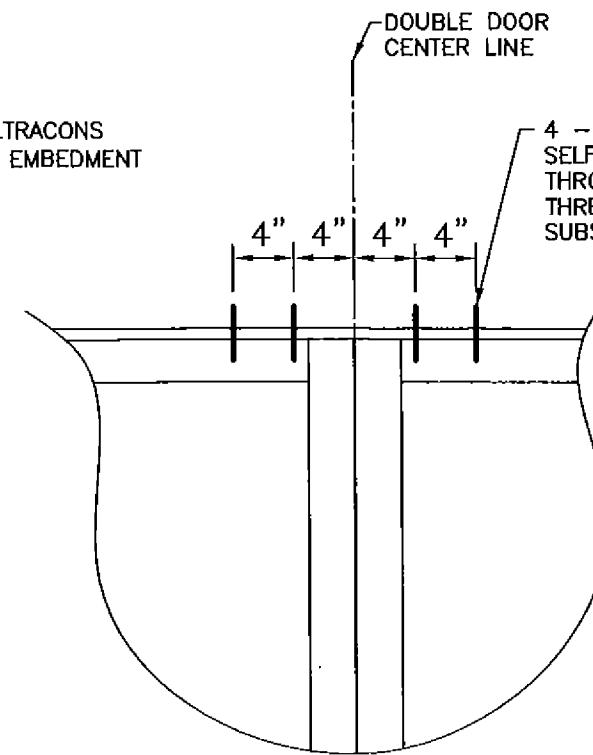
DRAWING No.
FD01-13
DATE: 05/16/13
SCALE: N.T.S.
SHEET 2 OF 8



**CLUSTER DETAIL
FOR ATTACHMENT TO CONCRETE
WITH OR W/O WOOD BUCKS
AT FRAME HEAD AND FRAME SILL**



**CLUSTER DETAIL
FOR ATTACHMENT TO WOOD
AT FRAME HEAD AND FRAME SILL**

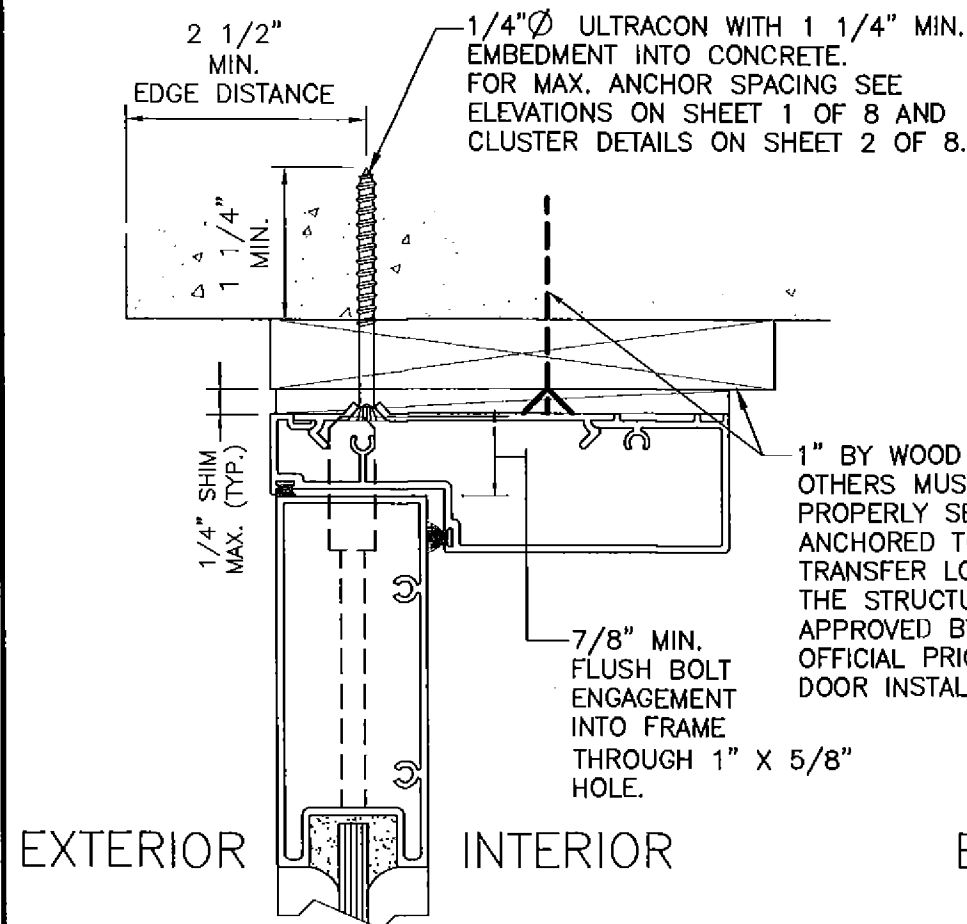


**CLUSTER DETAIL
FOR ATTACHMENT TO METAL
AT FRAME HEAD AND FRAME SILL**

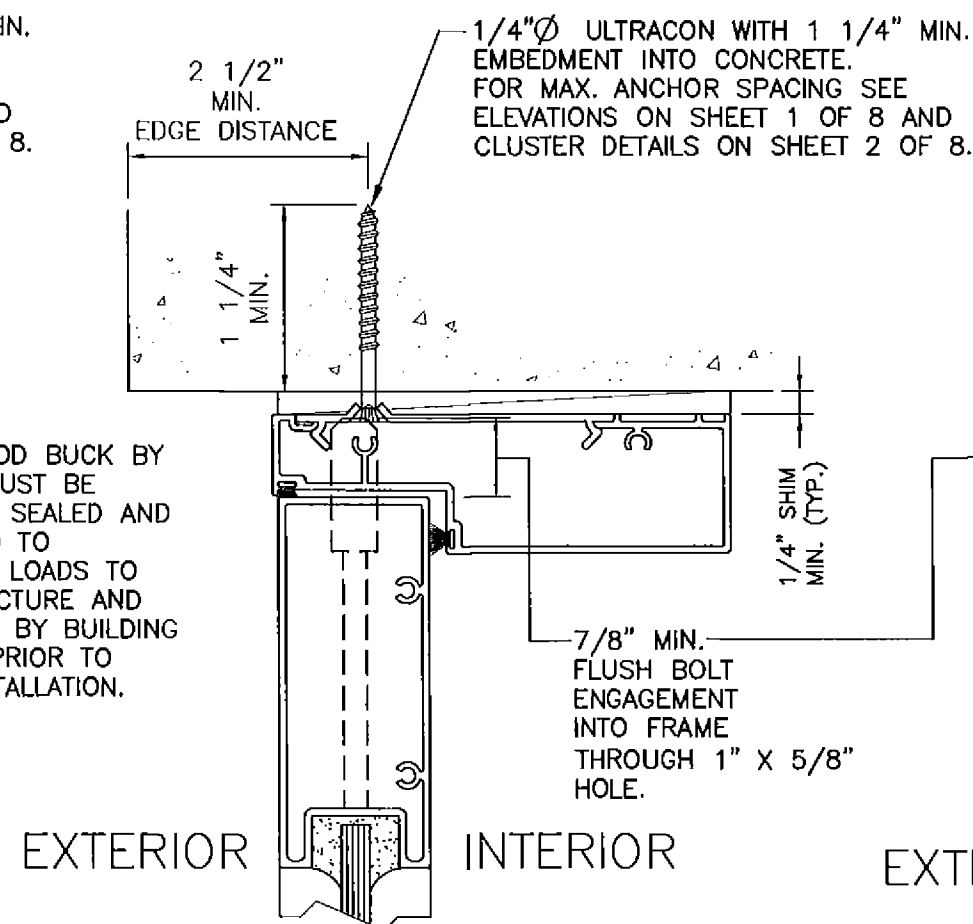
INTERLOCK CLUSTERS DETAILS

PRODUCT REVISED
as complying with the Florida
Building Code
Acceptance No. 15-0204.05
Expiration Date 05/08/2018
By *[Signature]*
Miami Dade Product Control

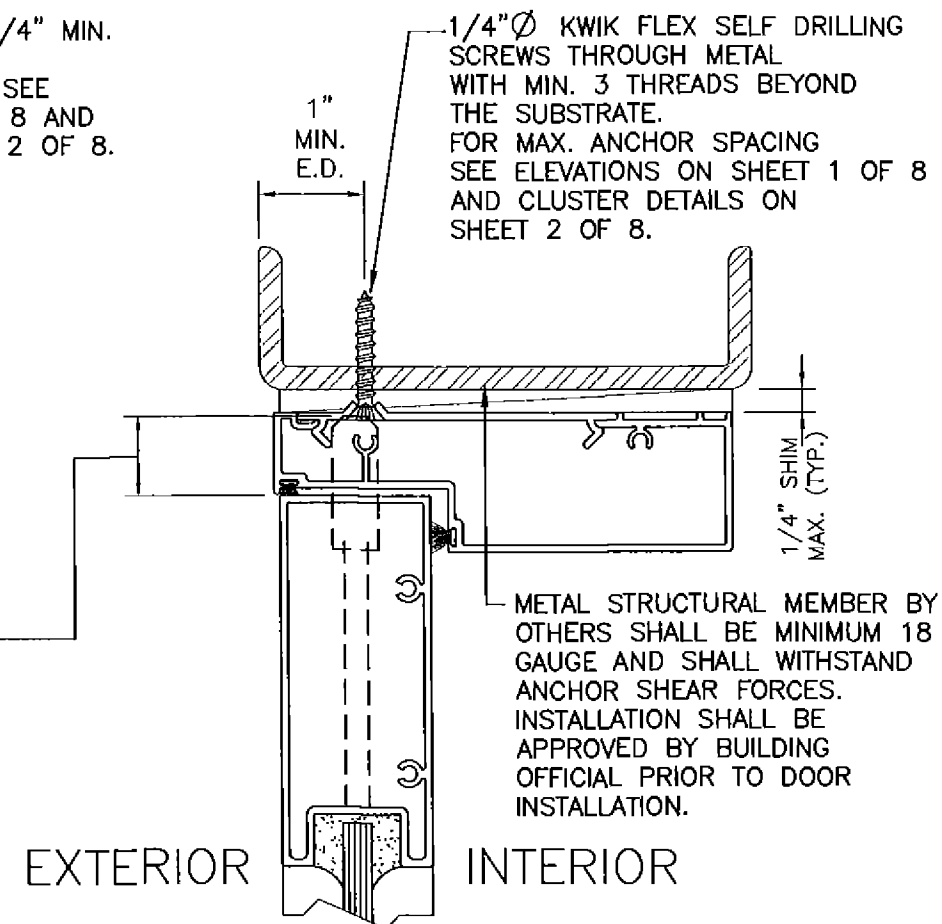
FRANCISCO HERNANDEZ
FLORIDA PE # 51393



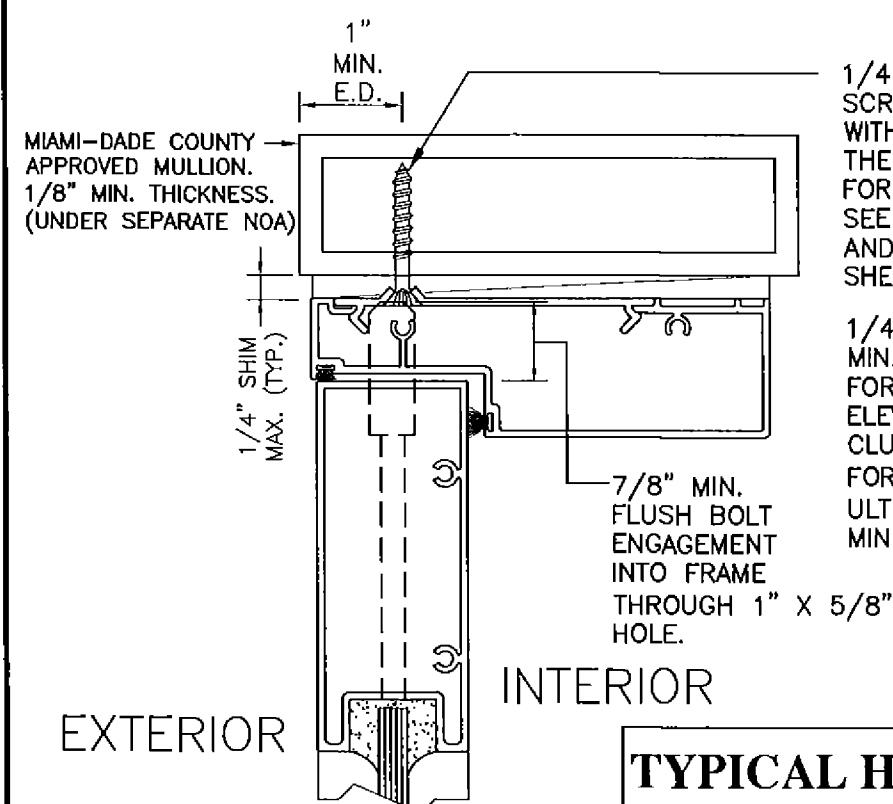
ATTACHMENT TO CONCRETE THROUGH 1 X WOOD BUCK



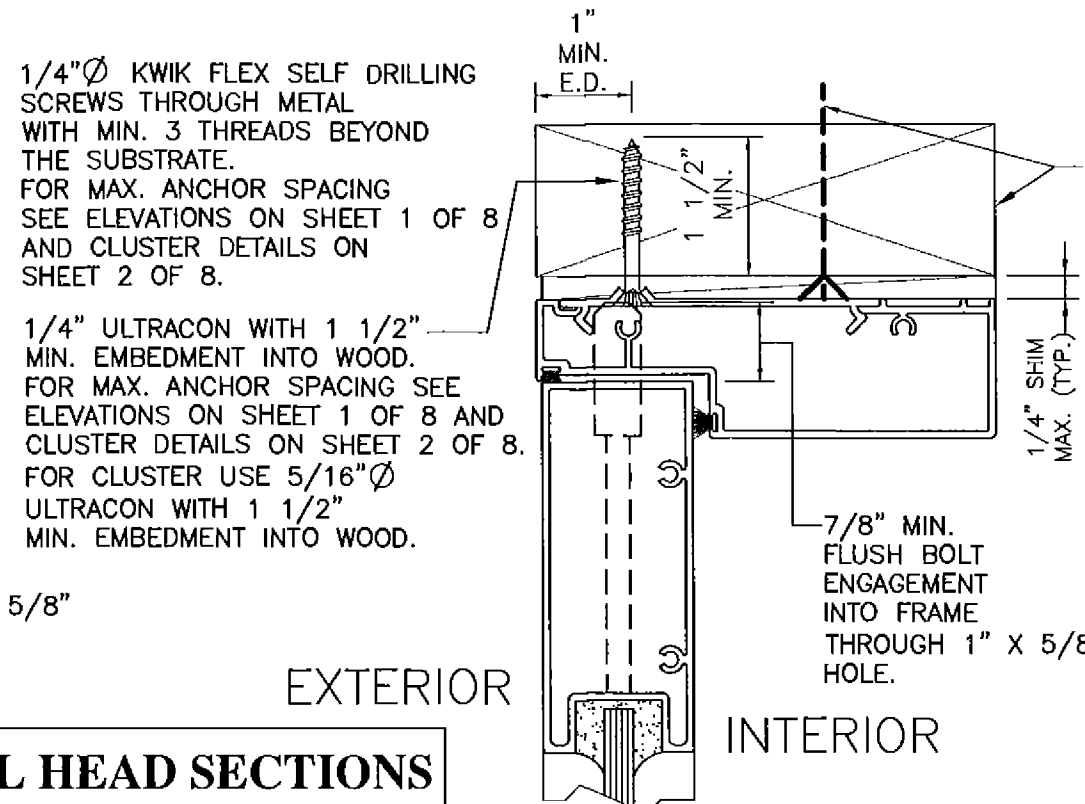
ATTACHMENT TO CONCRETE WITHOUT WOOD BUCK



ATTACHMENT TO METAL STRUCT.



ATTACHMENT TO MULLION

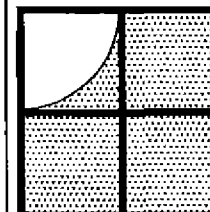


ATTACHMENT TO WOOD

TYPICAL HEAD SECTIONS

PRODUCT REVISED
as complying with the Florida
Building Code
Acceptance No. 15-0204.05
Expiration Date 05/08/2018
By: [Signature]
Miami Dade Product Control

FRANCISCO HERNANDEZ
FLORIDA PE # 51393

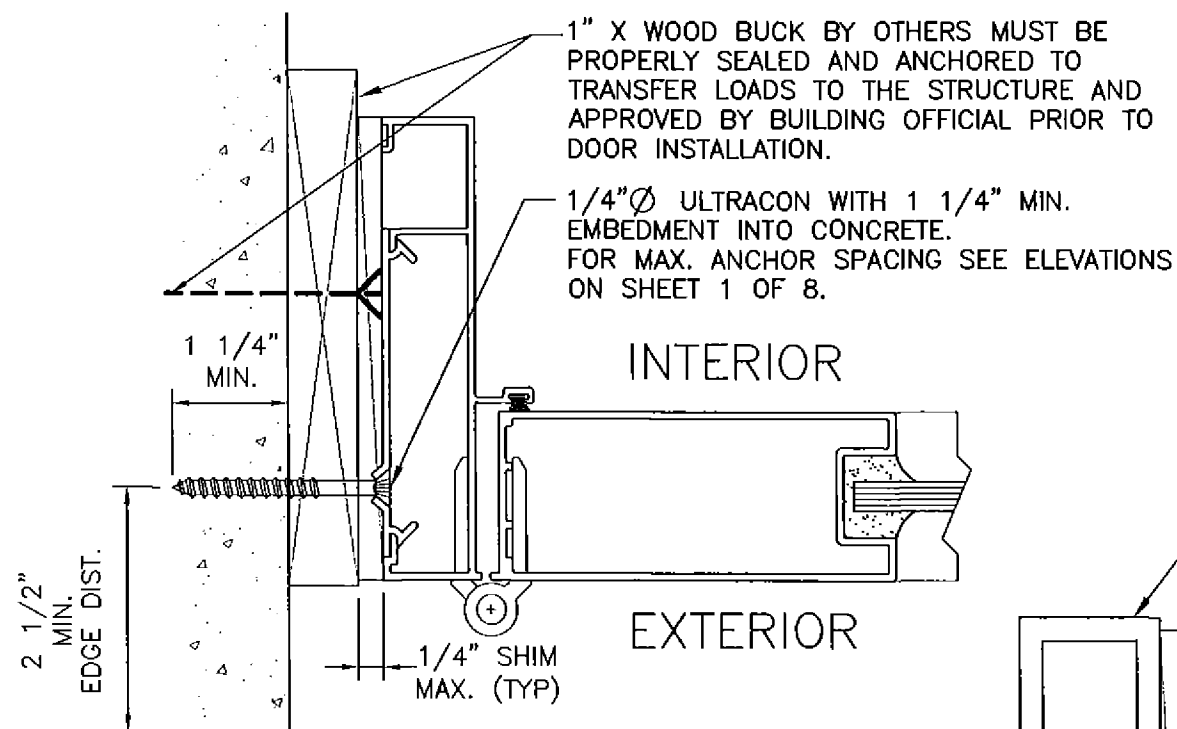


Sunshine Windows
Manufacturing, Inc.
1745 W. 33rd Place
Hialeah, Florida 33012
Ph: (305)364-9952
Fax: (305)828-5118

**SERIES 2001 ALUMINUM
OUTSWING FRENCH DOOR
LARGE MISSILE IMPACT RESISTANT**

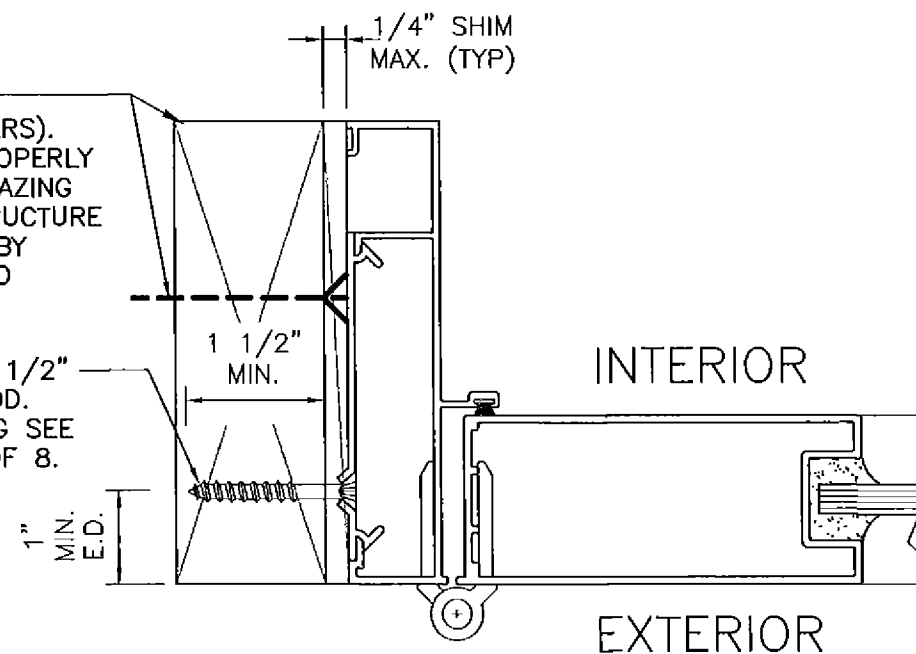
No	DATE	REVISION
1	01-20-15	UPDATED FOR 2014 FBC

DRAWING No.
FD01-13
DATE: 05/16/13
SCALE: N.T.S.
SHEET 3 OF 8



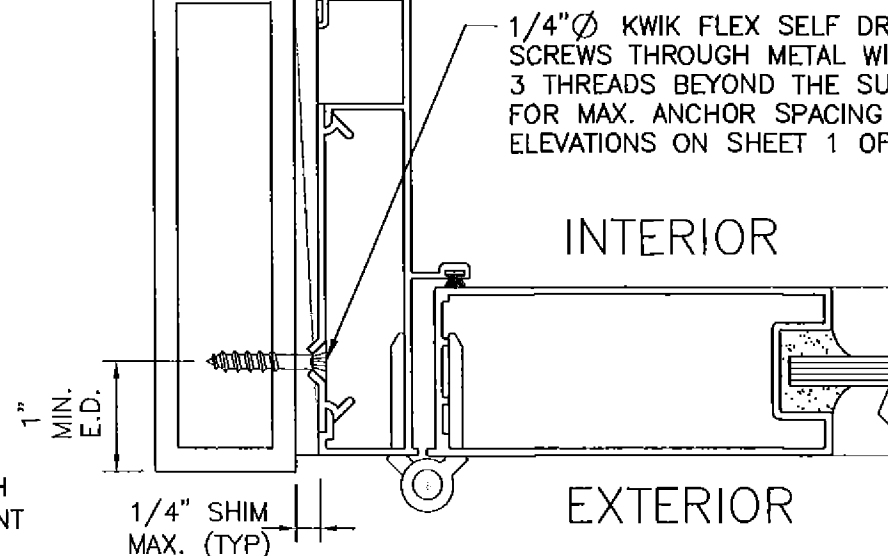
ATTACHMENT TO CONCRETE THROUGH 1 X WOOD BUCK

WOODEN STRUCTURE OR 2 X WOOD BUCK (BY OTHERS). WOOD BUCKS MUST BE PROPERLY ATTACHED TO TRANSFER GLAZING SYSTEM LOADS TO THE STRUCTURE AND SHALL BE APPROVED BY BUILDING OFFICIAL PRIOR TO WINDOW INSTALLATION



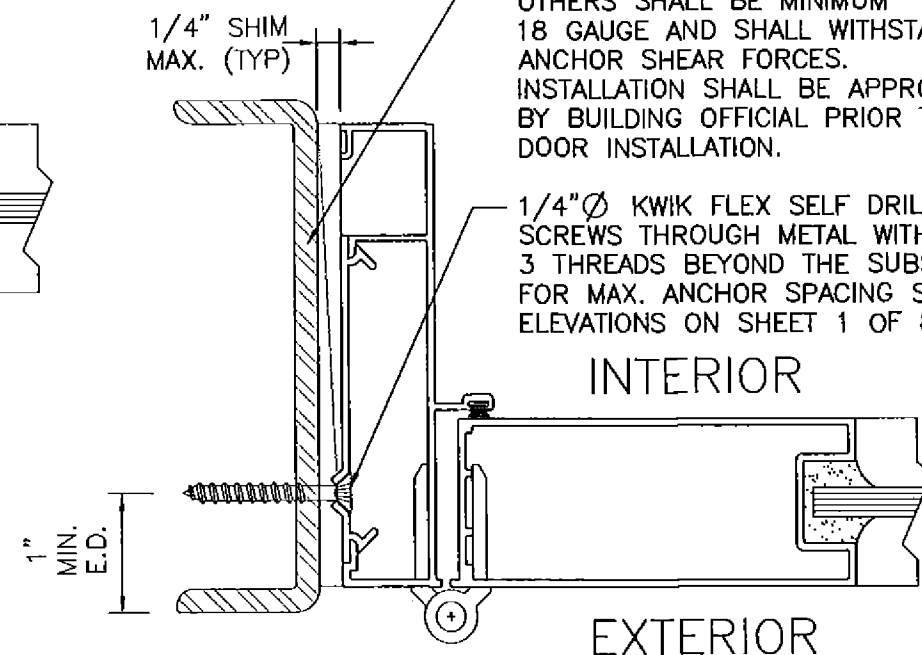
ATTACHMENT TO WOOD

MIAMI-DADE COUNTY APPROVED MULLION (UNDER SEPARATE NOA)

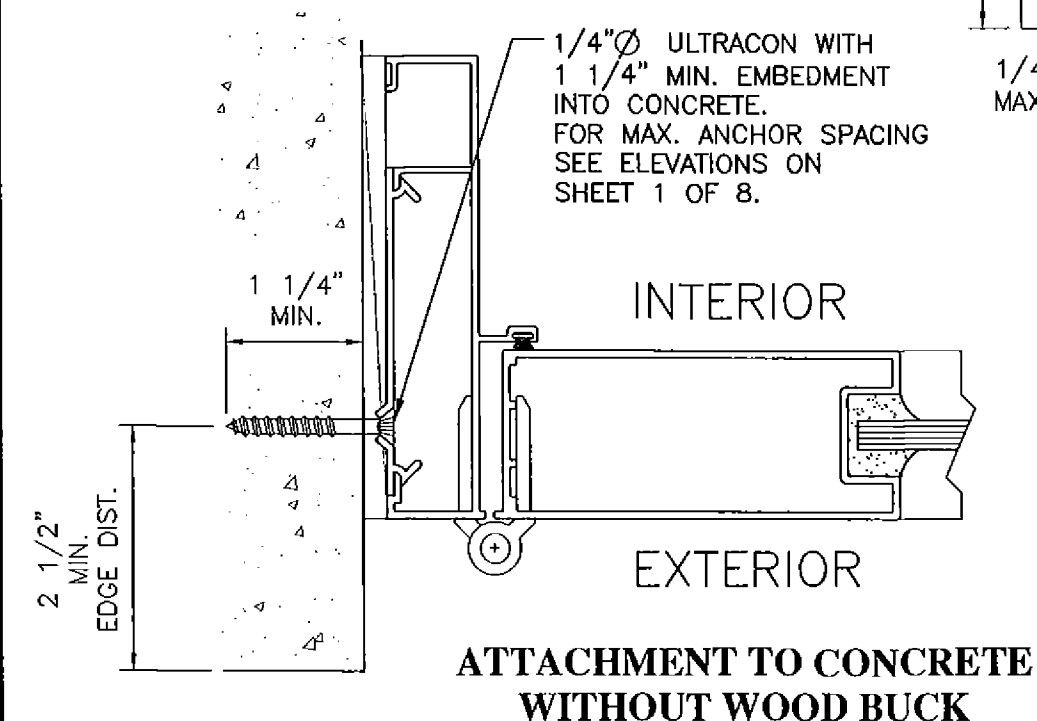


ATTACHMENT TO MULLION

METAL STRUCTURAL MEMBER BY OTHERS SHALL BE MINIMUM 18 GAUGE AND SHALL WITHSTAND ANCHOR SHEAR FORCES. INSTALLATION SHALL BE APPROVED BY BUILDING OFFICIAL PRIOR TO DOOR INSTALLATION.



ATTACHMENT TO METAL STRUCT.



ATTACHMENT TO CONCRETE WITHOUT WOOD BUCK

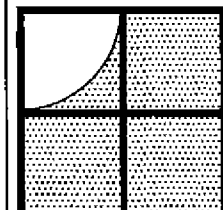
TYPICAL JAMB SECTIONS

PRODUCT REVISED as complying with the Florida Building Code Acceptance No. 15-0204.05 Expiration Date 05/08/2018

By *Francisco Hernandez* Miami Dade Product Control

01-20-15

FRANCISCO HERNANDEZ FLORIDA PE # 51393

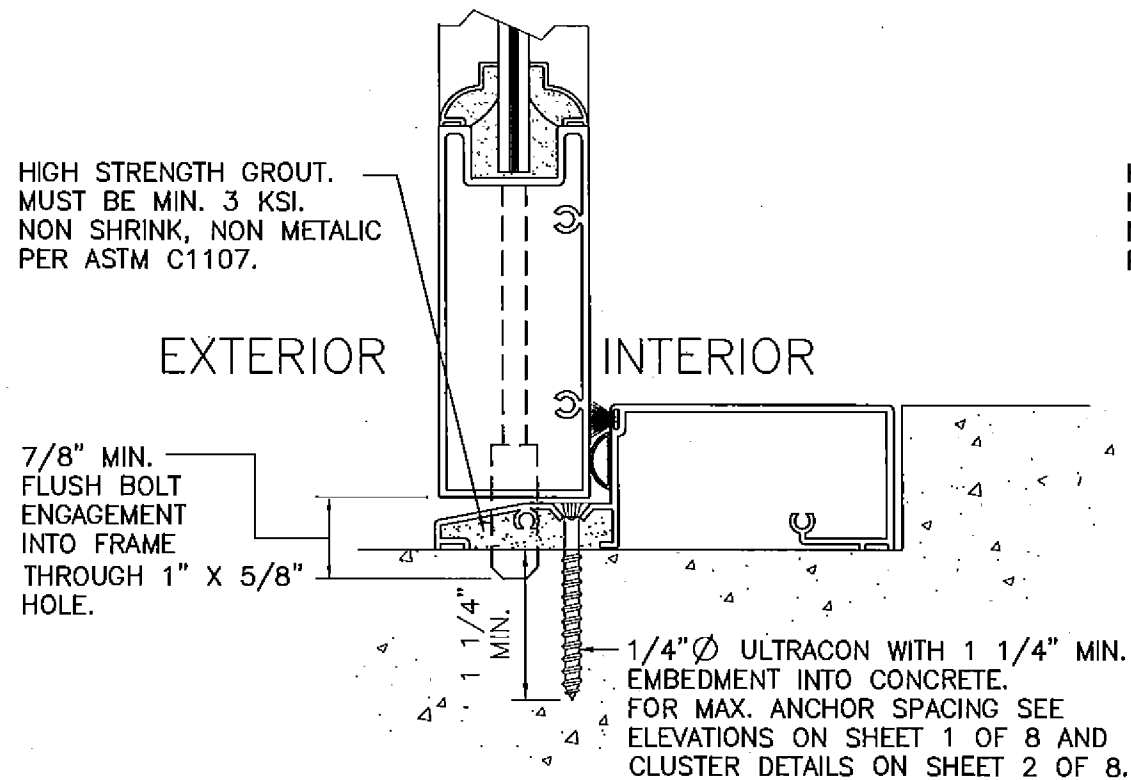


Sunshine Windows Manufacturing, Inc.
1745 W. 33rd Place
Hialeah, Florida 33012
Ph: (305)364-9952
Fax:(305)828-5118

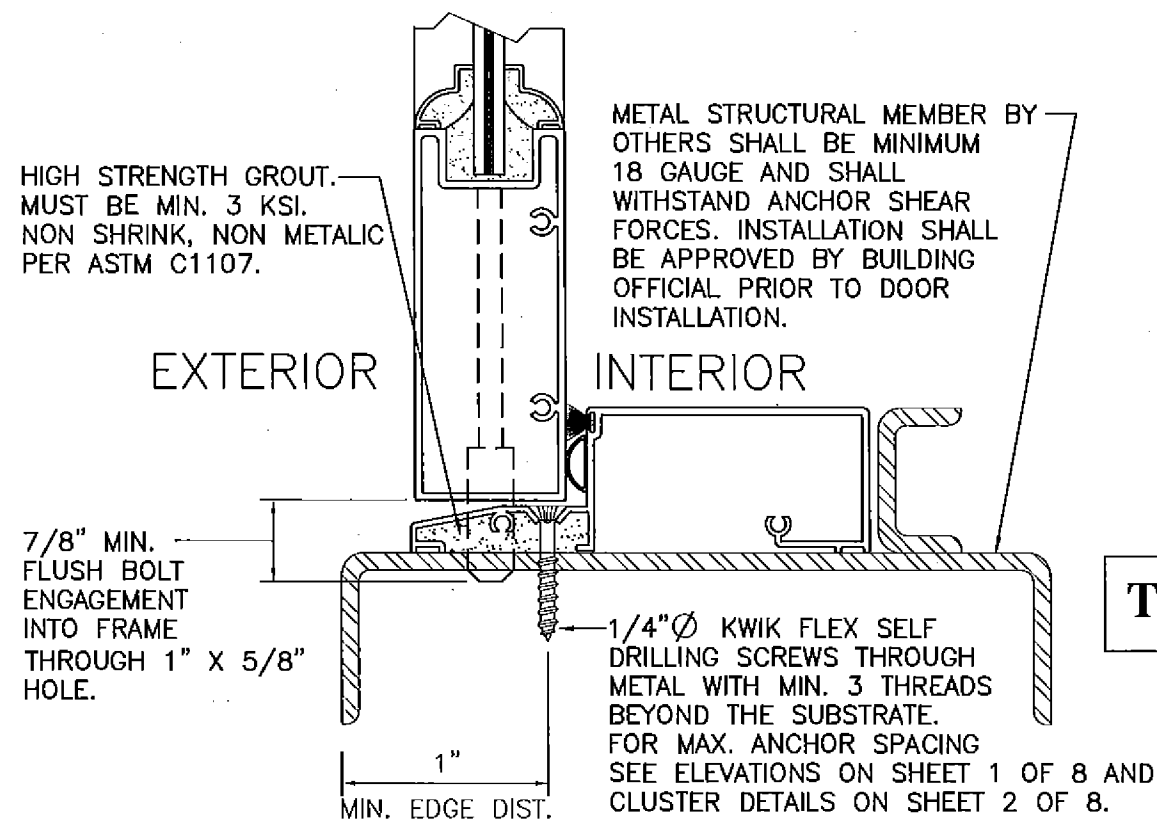
**SERIES 2001 ALUMINUM
OUTSWING FRENCH DOOR
LARGE MISSILE IMPACT RESISTANT**

No	DATE	REVISION
1	101-20-15	UPDATED FOR 2014 FBC

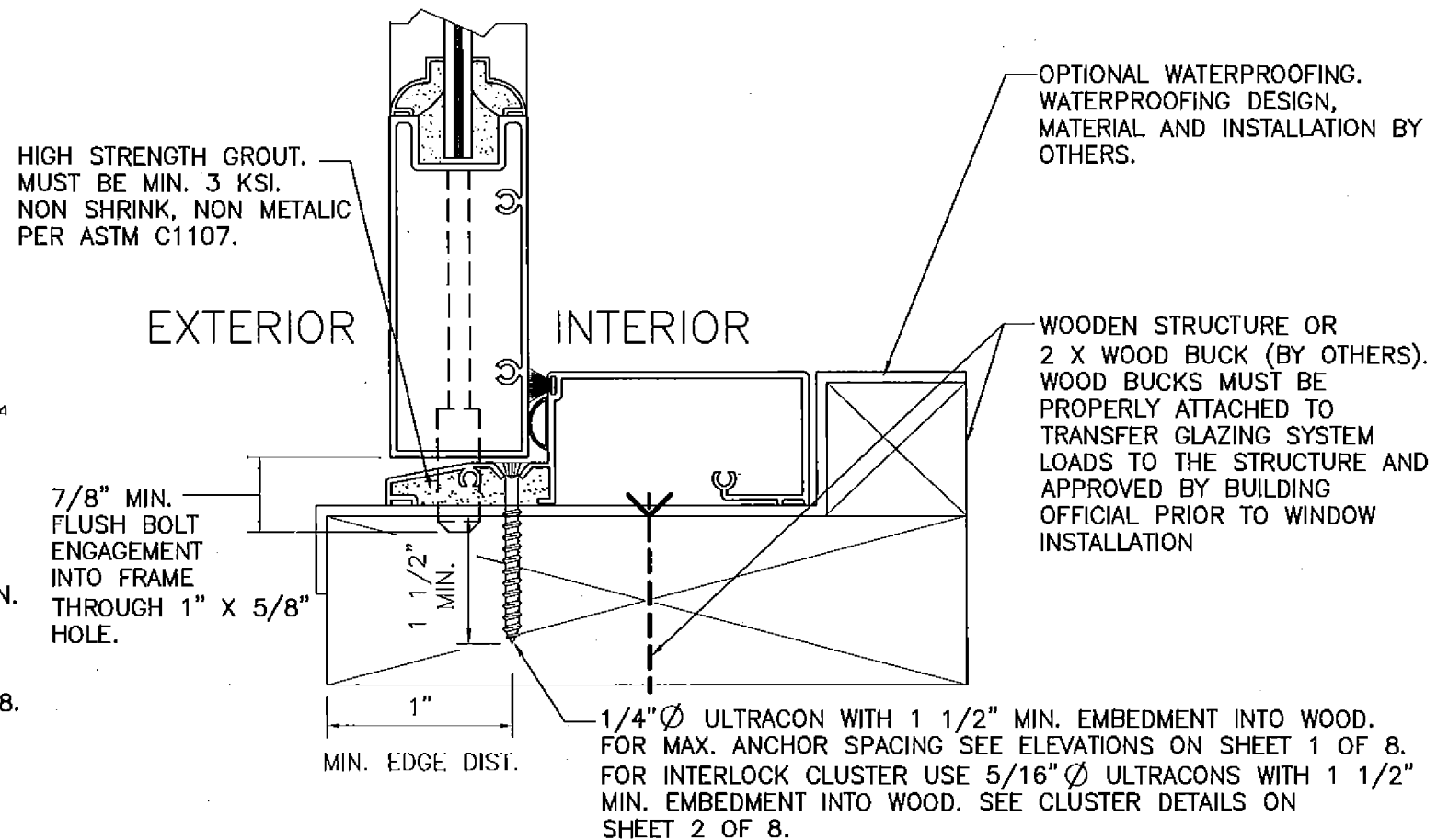
DRAWING No.
FD01-13
DATE: 05/16/13
SCALE: N.T.S.
SHEET 4 OF 8



ATTACHMENT TO CONCRETE

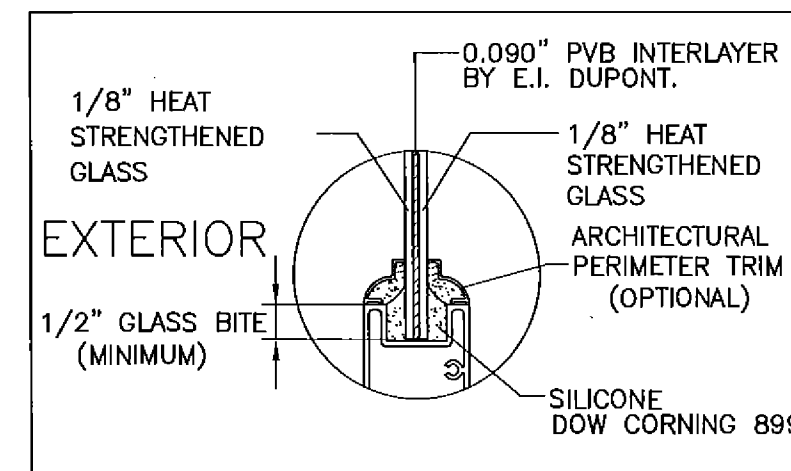


ATTACHMENT TO METAL



ATTACHMENT TO WOOD

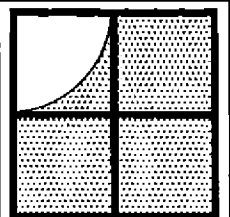
GLAZING DETAIL



TYPICAL SILL SECTIONS

PRODUCT REVISED as complying with the Florida Building Code
 Acceptance No. 15-0204.05
 Expiration Date 25/08/2018
 By *[Signature]*
 Miami Dade Product Control

FRANCISCO HERNANDEZ
 FLORIDA PE # 51393



Sunshine Windows
 Manufacturing, Inc.
 1745 W. 33rd Place
 Hialeah, Florida 33012
 Ph: (305)364-9952
 Fax: (305)828-5118

SERIES 2001 ALUMINUM
 OUTSWING FRENCH DOOR
 LARGE MISSILE IMPACT RESISTANT

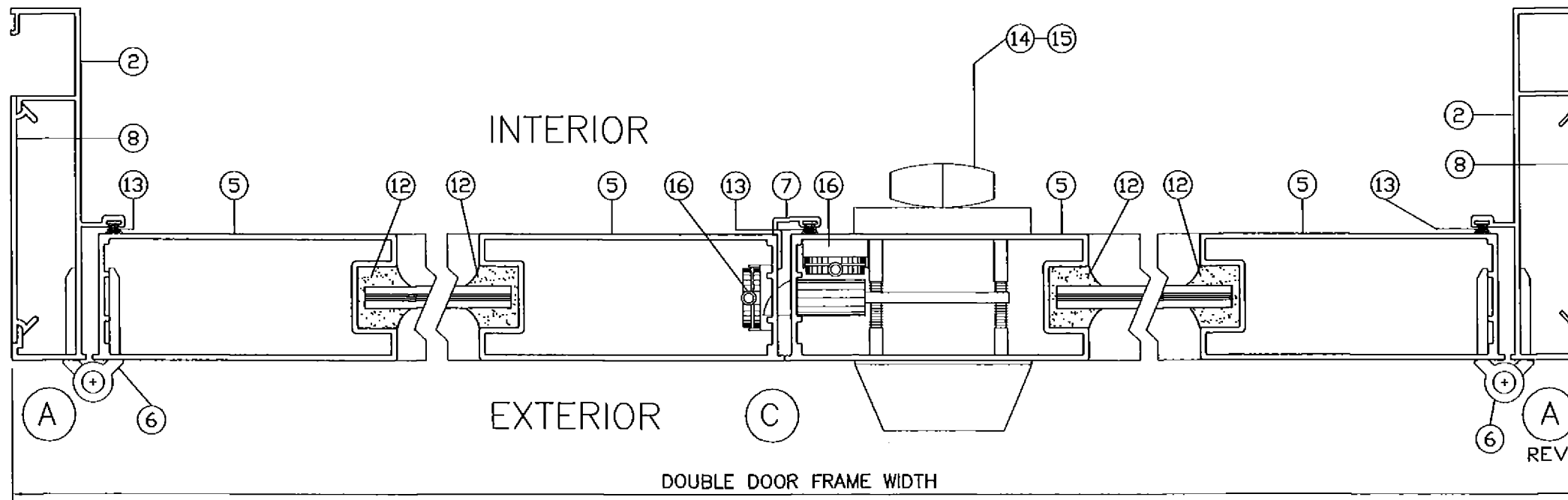
No	DATE	REVISION	UPDATED FOR 2014 FBC
1	01-20-15		

DRAWING No.
 FD01-13

DATE: 05/16/13

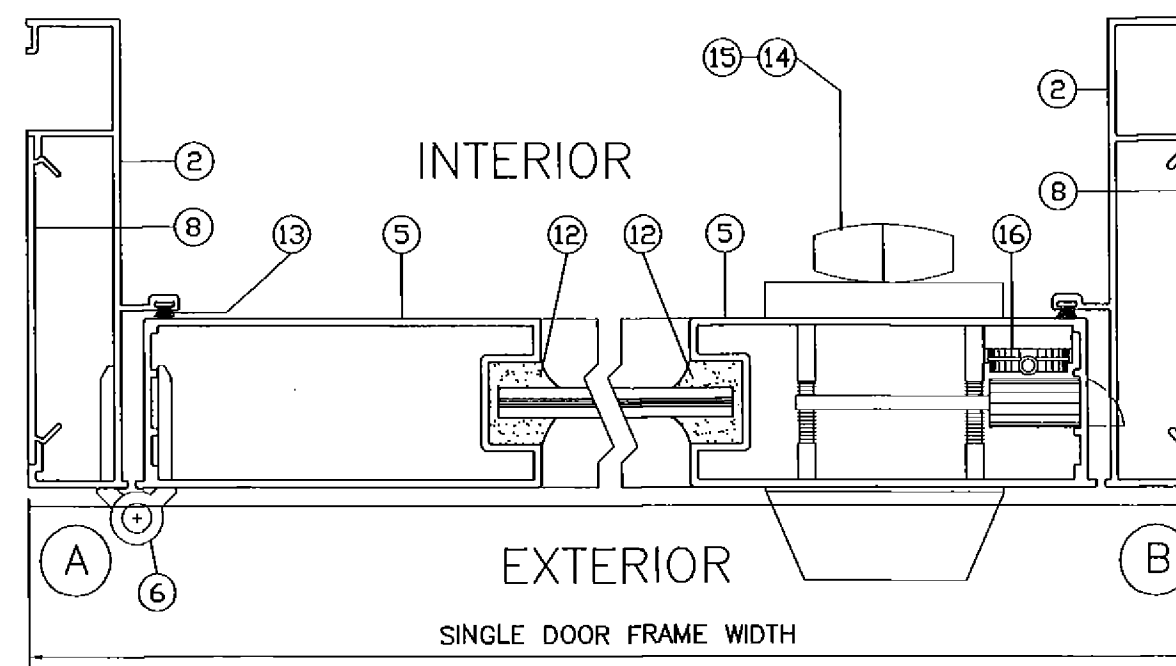
SCALE: N.T.S.

SHEET 5 OF 8



INSTALLATION NOTES

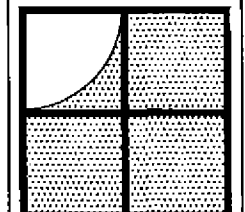
- 1.- FOR ANCHORS MAX. SPACING SEE DOOR ELEVATION ON SHEET 1 OF 8.
- 2.- FOR ANCHOR INSTALLATION AND CLUSTER DETAILS SEE SHEET 2 OF 8 AND TYPICAL SECTIONS ON SHEETS 3, 4, & 5 OF 8.
- 3.- FOR ATTACHMENT INTO CONCRETE THROUGH 1 X WOOD BUCK USE 1/4"Ø ULTRACON BY ELCO WITH 1 1/4" MIN. EMBEDMENT INTO CONCRETE AND 2 1/2" MIN. EDGE DISTANCE.
- 4.- FOR ATTACHMENT TO CONCRETE WITHOUT WOOD BUCKS USE 1/4"Ø ULTRACON BY ELCO WITH 1 1/4" MIN. EMBEDMENT INTO CONCRETE AND 2 1/2" MIN. EDGE DISTANCE.
- 5.- FOR ATTACHMENT TO WOODEN STRUCTURE OR 2 X WOOD BUCK USE 1/4" Ø ULTRACON BY ELCO WITH 1 1/2" MIN. EMBEDMENT INTO WOOD AND 1" MIN. EDGE DISTANCE. (SEE CLUSTER DETAIL)
- 6.- FOR ATTACHMENT TO STEEL MEMBERS (18 MIN. GAUGE) OR ALUMINUM MEMBERS (1/8" MIN. WALL THICKNESS) USE 1/4" KWIK-FLEX SELF DRILLING SCREWS.
- 7.- USE HIGH STRENGTH, NON SHRINK NON METALLIC GROUT (MIN 3 KSI) BETWEEN THE DOOR SILL AND THE CONCRETE SLAB CONTINUOUSLY ALONG THE SILL.



HORIZONTAL SECTIONS

PRODUCT REVISED
 as complying with the Florida
 Building Code
 Acceptance No. 15-0204.05
 Expiration Date 05/08/2018
 By *[Signature]*
 Miami Dade Product Control

[Signature]
 01-20-15
 FRANCISCO HERNANDEZ
 FLORIDA PE # 51393



Sunshine Windows
 Manufacturing, Inc.
 1745 W. 33rd Place
 Hialeah, Florida 33012
 Ph: (305)364-9952
 Fax: (305)828-5118

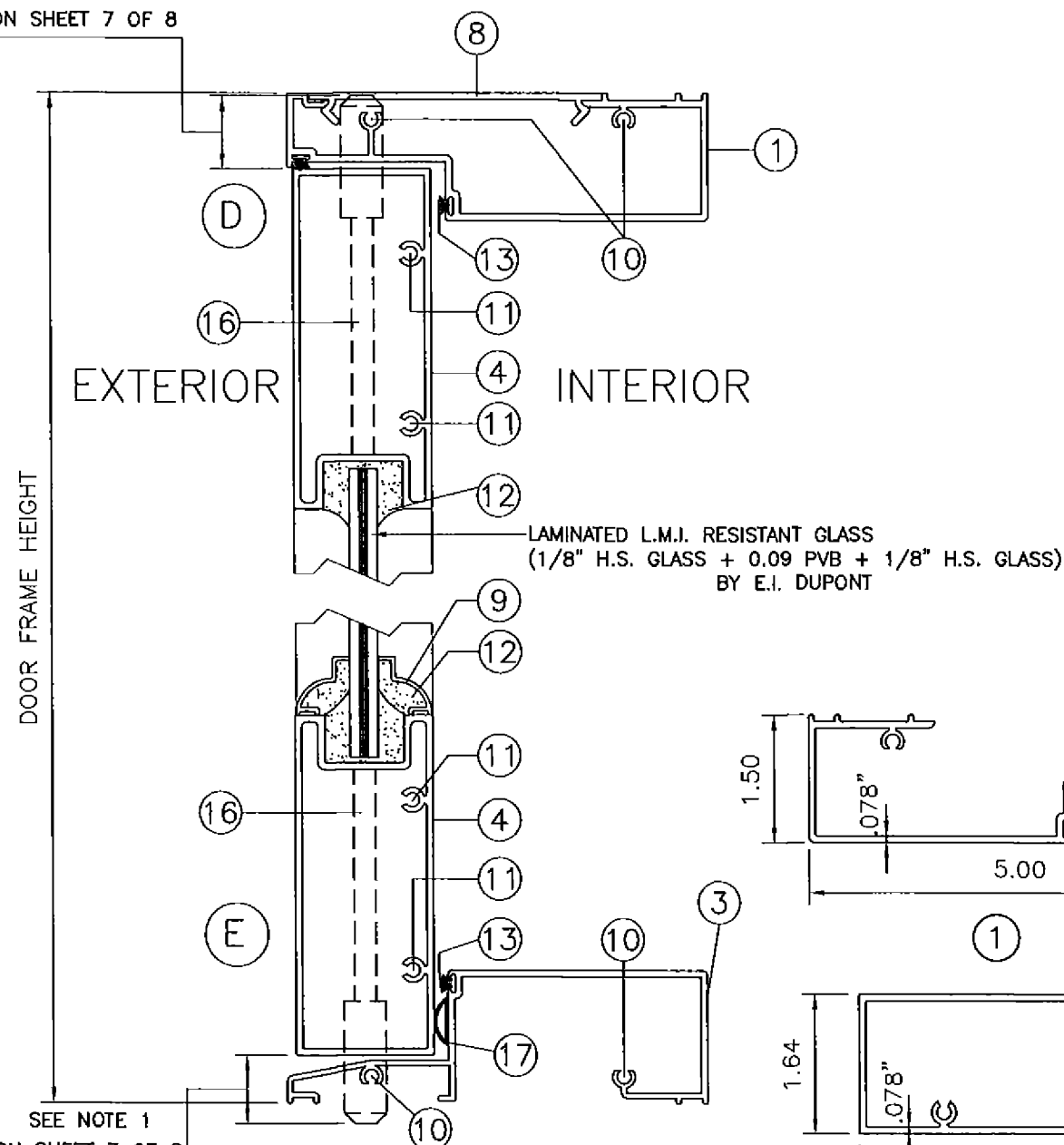
SERIES 2001 ALUMINUM
 OUTSWING FRENCH DOOR
 LARGE MISSILE IMPACT RESISTANT

No	DATE	REVISION
1	01-20-15	UPDATED FOR 2014 FBC

DRAWING No.
 FD01-13
 DATE: 05/16/13
 SCALE: N.T.S.
 SHEET 6 OF 8

MATERIAL LIST				
No	PART	QTY	PART DESCRIPTION	MATERIAL
1	GAS-46913	1	FRAME HEAD	6063-T6
2	GAS-46912	2	FRAME JAMB	6063-T6
3	GAS-46915	1	FRAME SILL	6063-T6
4	GAS-46914	4	PANEL TOP AND BOTTOM RAIL	6063-T5
5	GAS-46910	4	PANEL STILE	6063-T6
6	GAS-46917	3 / LEAVE	HINGE	6063-T5
7	GAS-46916	1	ADAPTER	6063-T5
8	GAS-40928	AS REQ'D	FLAT FILL COVER	6063-T5
9	GAS-46911	OPTIONAL	PERIMETER TRIM	6063-T5
10	1LY73	AS REQ'D	# 10 X 1" SCREWS GRADE 5	STEEL
11	1MB16	AS REQ'D	# 10 X 1 1/2" SCREWS GRADE 5	STEEL
12	SEALANT	AS REQ'D	DOW CORNING 899	SILICONE
13	W33321NK0020	AS REQ'D	ULTRA FIN WEATHERSEAL BY ULTRAFAB .187 X .320	POLYPROPYLENE
14	RA-2090L3RZAB3BP	1	LOCK (LATCH)	ZINC
15	RA-209DZ1ABBP	1	LOCK (DEAD BOLT)	ZINC
16	FLUSH BOLTS	2 / LEAVE	FLUSH BOLTS	ZINC / STEEL
17	X109HT-100	AS REQ'D	D SECTION FOAM RUBBER SEAL	EPDM

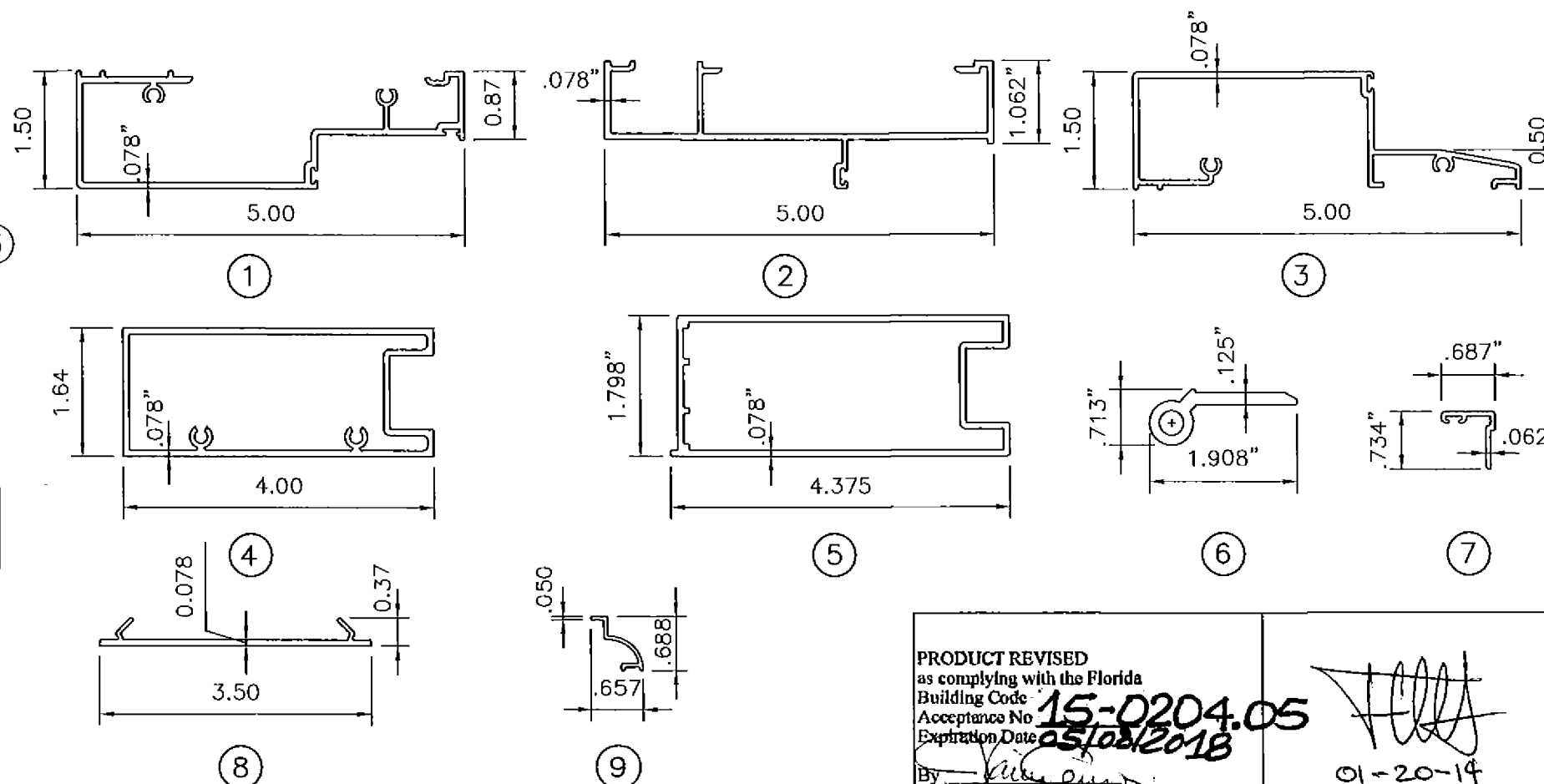
SEE NOTE 1
ON SHEET 7 OF 8



VERTICAL SECTIONS

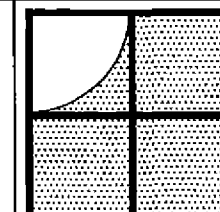
SEE NOTE 1
ON SHEET 7 OF 8

NOTE:
1.- 7/8" MIN. FLUSH BOLT ENGAGEMENT.



PRODUCT REVISED
as complying with the Florida
Building Code
Acceptance No. 15-0204.05
Expiration Date 05/05/2018
By *[Signature]*
Miami Dade Product Control

[Signature]
01-20-14
FRANCISCO HERNANDEZ
FLORIDA PE # 51393



Sunshine Windows
Manufacturing, Inc.
1745 W. 33rd Place
Hialeah, Florida 33012
Ph: (305)364-9952
Fax: (305)828-5118

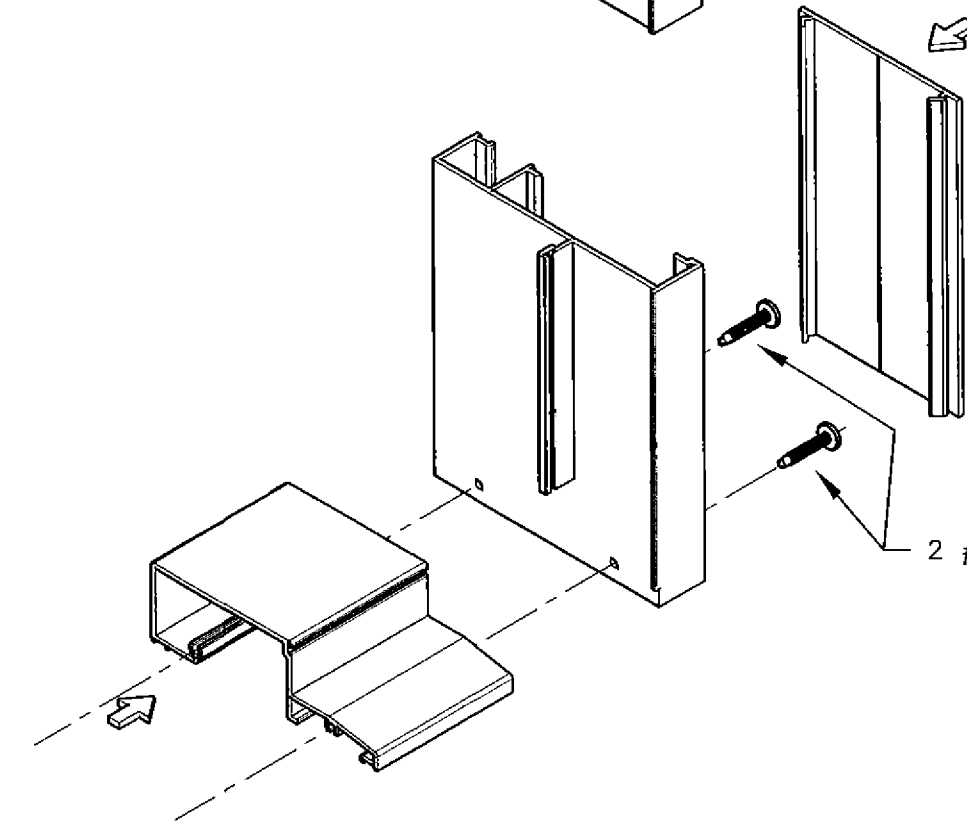
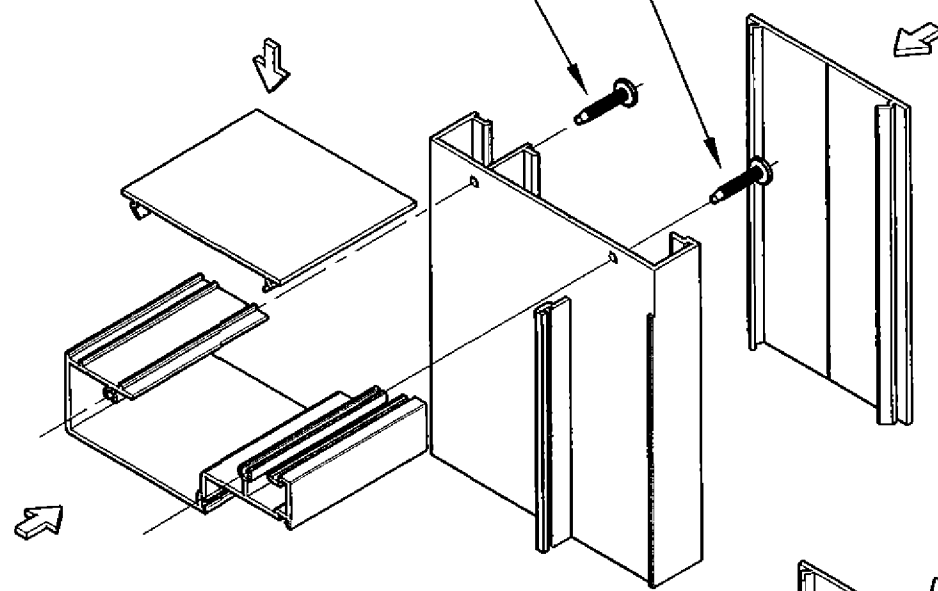
SERIES 2001 ALUMINUM
OUTSWING FRENCH DOOR
LARGE MISSILE IMPACT RESISTANT

No	DATE	REVISION
1	01-20-15	UPDATED FOR 2014 FBC

DRAWING No.
FD01-13
DATE: 05/16/13
SCALE: N.T.S.
SHEET 7 OF 8

TOP CORNER

2 # 10 BY 1" PH. PAN HEAD SMS



BOTTOM CORNER

DOOR FRAME CORNERS

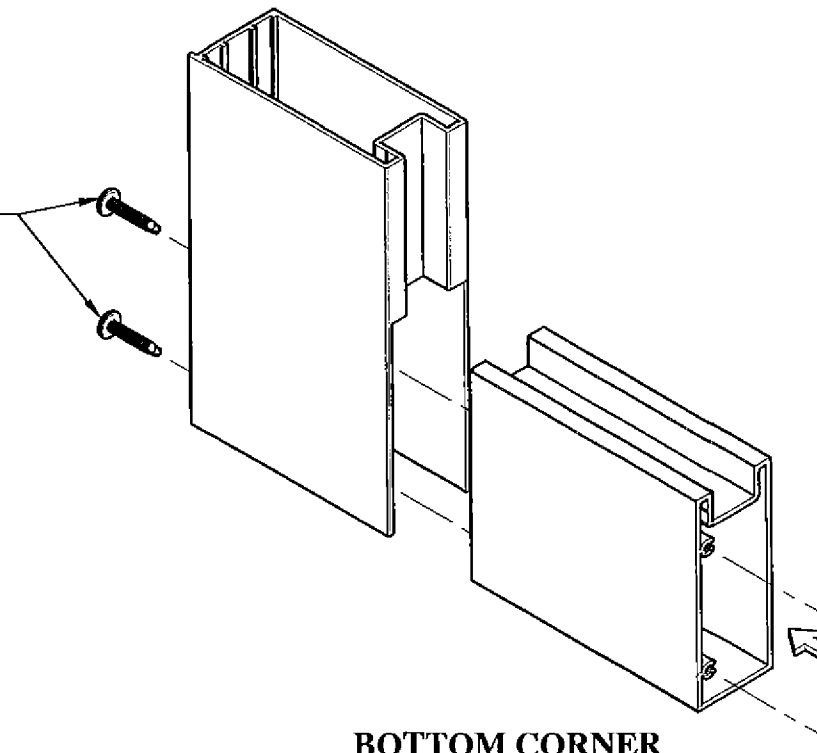
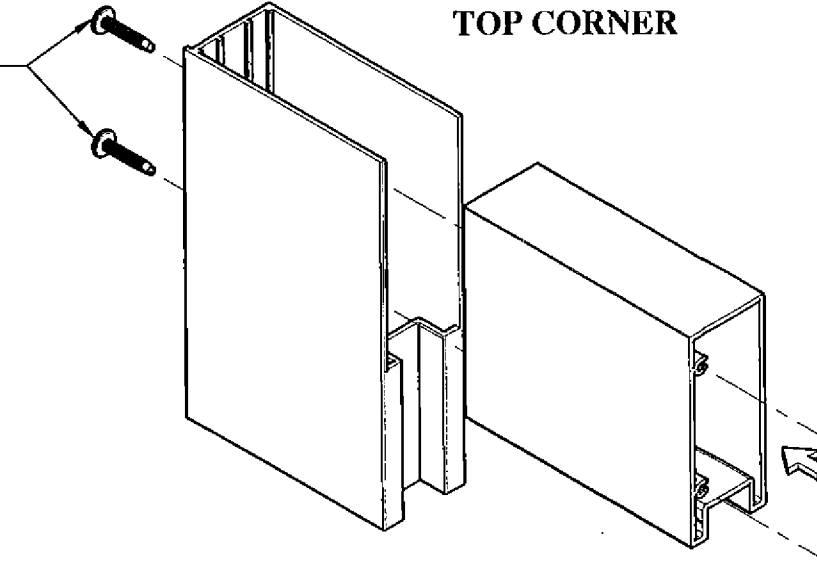
SCALE: NTS

2 # 10 BY 1 1/2" PH.
FLAT HEAD SMS

2 # 10 BY 1 1/2" PH.
FLAT HEAD SMS

2 # 10 BY 1" PH. PAN HEAD SMS

TOP CORNER



BOTTOM CORNER

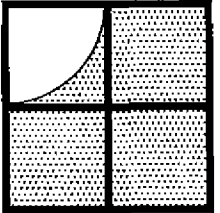
DOOR PANEL CORNERS

SCALE: NTS

PRODUCT REVISED
as complying with the Florida
Building Code
Acceptance No. 15-0204.05
Expiration Date 05/08/2018
By *[Signature]*
Miami Dade Product Control

[Signature]
01-20-15

FRANCISCO HERNANDEZ
FLORIDA PE # 51393



Sunshine Windows
Manufacturing, Inc.
1745 W. 33rd Place
Hialeah, Florida 33012
Ph: (305)364-9952
Fax: (305)828-5118

SERIES 2001 ALUMINUM
OUTSWING FRENCH DOOR
LARGE MISSILE IMPACT RESISTANT

No	DATE	REVISION
1	01-20-15	UPDATED FOR 2014 FBC

DRAWING No.
FD01-13
DATE: 05/16/13
SCALE: N.T.S.
SHEET 8 OF 8