



DEPARTMENT OF REGULATORY AND ECONOMIC RESOURCES (RER)  
BOARD AND CODE ADMINISTRATION DIVISION

## NOTICE OF ACCEPTANCE (NOA)

MIAMI-DADE COUNTY, FLORIDA  
PRODUCT CONTROL SECTION  
11805 SW 26 Street, Room 208  
T (786) 315-2590 F (786) 315-2599  
[www.miamidade.gov/economy](http://www.miamidade.gov/economy)

Sunshine Windows Manufacturing, Inc.

1745 W. 33<sup>rd</sup> Place

Hialeah, FL 33012

### SCOPE:

This NOA is being issued under the applicable rules and regulations governing the use of construction materials. The documentation submitted has been reviewed and accepted by Miami-Dade County RER-Product Control Section to be used in Miami-Dade County and other areas where allowed by the Authority Having Jurisdiction (AHJ).

This NOA shall not be valid after the expiration date stated below. The Miami-Dade County Product Control Section (In Miami-Dade County) and/ or the AHJ (in areas other than Miami-Dade County) reserve the right to have this product or material tested for quality assurance purposes. If this product or material fails to perform in the accepted manner, the manufacturer will incur the expense of such testing and the AHJ may immediately revoke, modify, or suspend the use of such product or material within their jurisdiction. RER reserves the right to revoke this acceptance, if it is determined by Miami-Dade County Product Control Section that this product or material fails to meet the requirements of the applicable building code. This product is approved as described herein, and has been designed to comply with the Florida Building Code, including the High Velocity Hurricane Zone.

**DESCRIPTION:** Series "2000" Aluminum Single Hung Window – N.I.

**APPROVAL DOCUMENT:** Drawing No. SH08-02, titled "Series 2000 Aluminum Single Hung Non-Impact Resistant Glass", sheets 01 through 06 of 06, dated 04/14/08, with revision no. 2 dated 12/05/14, prepared by manufacturer, signed and sealed by Francisco Hernandez, P. E., bearing the Miami-Dade County Product Control Section Revision stamp with the Notice of Acceptance number and Expiration date by the Miami-Dade County Product Control Section.

**MISSILE IMPACT RATING:** None.

**LABELING:** Each unit shall bear a permanent label with the manufacturer's name or logo, city, state, series, and following statement: "Miami-Dade County Product Control Approved", unless otherwise noted herein.

**RENEWAL** of this NOA shall be considered after a renewal application has been filed and there has been no change in the applicable building code negatively affecting the performance of this product.

**TERMINATION** of this NOA will occur after the expiration date or if there has been a revision or change in the materials, use, and/ or manufacture of the product or process. Misuse of this NOA as an endorsement of any product, for sales, advertising or any other purposes shall automatically terminate this NOA. Failure to comply with any section of this NOA shall be cause for termination and removal of NOA.

**ADVERTISEMENT:** The NOA number preceded by the words Miami-Dade County, Florida, and followed by the expiration date may be displayed in advertising literature. If any portion of the NOA is displayed, then it shall be done in its entirety.

**INSPECTION:** A copy of this entire NOA shall be provided to the user by the manufacturer or its distributors and shall be available for inspection at the job site at the request of the Building Official.

This NOA revises NOA No. 12-0320.09 and consists of this page 1 and evidence pages E-1 and E-2, as well as approval document mentioned above.

The submitted documentation was reviewed by Jaime D. Gascon, P. E.



*J. Gascon*  
3/31/15

NOA No. 14-1224.09  
Expiration Date: May 08, 2018  
Approval Date: April 09, 2015  
Page 1

**Sunshine Windows Manufacturing, Inc.**

**NOTICE OF ACCEPTANCE: EVIDENCE SUBMITTED**

**A. DRAWINGS**

1. Manufacturer's die drawings and sections.  
*(Submitted under previous NOA No. 07-0119.07)*
2. Drawing No. SH08-02, titled "Series 2000 Aluminum Single Hung Non-Impact Resistant Glass", sheets 01 through 06 of 06, dated 04/14/08, with revision no. 2 dated 12/05/14, prepared by manufacturer, signed and sealed by Francisco Hernandez, P. E.

**B. TESTS**

1. Test reports on: 1) Air Infiltration Test, per FBC, TAS 202-94  
2) Uniform Static Air Pressure Test, Loading per FBC, TAS 202-94  
3) Water Resistance Test, per FBC, TAS 202-94  
4) Forced Entry Test, per FBC 2411.3.2.1, and TAS 202-94  
along with marked-up drawings and installation diagram of a series 2000 aluminum single hung window, prepared by Fenestration Testing Laboratory, Inc., Test Report No. FTL-5124, dated 08/27/07, signed and sealed by Carlos S. Rionda, P. E.  
*(Submitted under previous NOA No. 07-0119.07)*
2. Test reports on: 1) Air Infiltration Test, per FBC, TAS 202-94  
2) Uniform Static Air Pressure Test, Loading per FBC, TAS 202-94  
3) Water Resistance Test, per FBC, TAS 202-94  
4) Forced Entry Test, per FBC 2411.3.2.1, and TAS 202-94  
along with marked-up drawings and installation diagram of a series 2000 aluminum single hung window, prepared by Fenestration Testing Laboratory, Inc., Test Report No. FTL-5127, dated 03/28/07, signed and sealed by Michael Wenzel, P. E.  
*(Submitted under previous NOA No. 07-0119.07)*

**C. CALCULATIONS**

1. Anchor verification calculations and structural analysis, complying with FBC 5<sup>th</sup> Edition (2014), prepared by manufacturer, dated 12/06/14, signed and sealed by Francisco Hernandez, P. E.
2. Glazing complies with ASTM E1300-04/ 09

**D. QUALITY ASSURANCE**

1. Miami-Dade Department of Regulatory and Economic Resources (RER).



Jaime D. Gascon, P. E.  
Product Control Section Supervisor  
NOA No. 14-1224.09  
Expiration Date: May 08, 2018  
Approval Date: April 09, 2015

Sunshine Windows Manufacturing, Inc.

NOTICE OF ACCEPTANCE: EVIDENCE SUBMITTED

**E. MATERIAL CERTIFICATIONS**

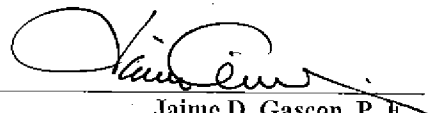
1. Pecora Corp. Part No. **Pecora 895 EPDM exterior glazing gasket** complying with ASTM C 794—30 pli, ASTM D412—Tension of 550 PSI, ASTM D 624—40 lb./ in., ASTM D 2240—Hardness Shore A 27 Durometer, ASTM C 510—None, ASTM D 471—70 HRS 257°F and ASTM D 3835—3.0 HRS 180°F, ASTM C 719—±50%, ASTM D 3960—12 g/L, ASTM C 679—3hrs. 7 to 14 days, ASTM C 639—Nil.

**F. STATEMENTS**

1. Statement letter of conformance to, complying with **FBC 5<sup>th</sup> Edition (2014)** and of no financial interest, dated 12/28/14, signed and sealed by Francisco Hernandez, P. E.
2. Department of State Certification of **SUNSHINE WINDOWS MANUFACTURING CORPORATION, INC.** as a for profit corporation, active and organized under the laws of the State of Florida, dated 11/24/14 and filed by the Secretary of State.
3. Statement letter of conformance, complying with **FBC-2010** and of no financial interest, dated 03/12/12, signed and sealed by Francisco Hernandez, P. E.  
*(Submitted under previous NOA No. 10-0222.05)*
4. Laboratory compliance letter for Test Report No. **FTL-5253**, dated 10/10/07, issued by Fenestration Testing Laboratory, Inc., signed and sealed by Carlos S. Rionda, P. E.  
*(Submitted under previous NOA No. 07-0119.07)*
5. Laboratory compliance letter for Test Report No. **FTL-5127**, dated 03/28/07, issued by Fenestration Testing Laboratory, Inc., signed and sealed by Michael Wenzel, P. E.  
*(Submitted under previous NOA No. 07-0119.07)*

**G. OTHERS**

1. Notice of Acceptance No. **12-0320.09**, issued to Sunshine Windows Manufacturing, Inc. for their Series "2000 Aluminum Single Hung Window - N.I.", approved on 05/17/12 and expiring on 05/08/18.

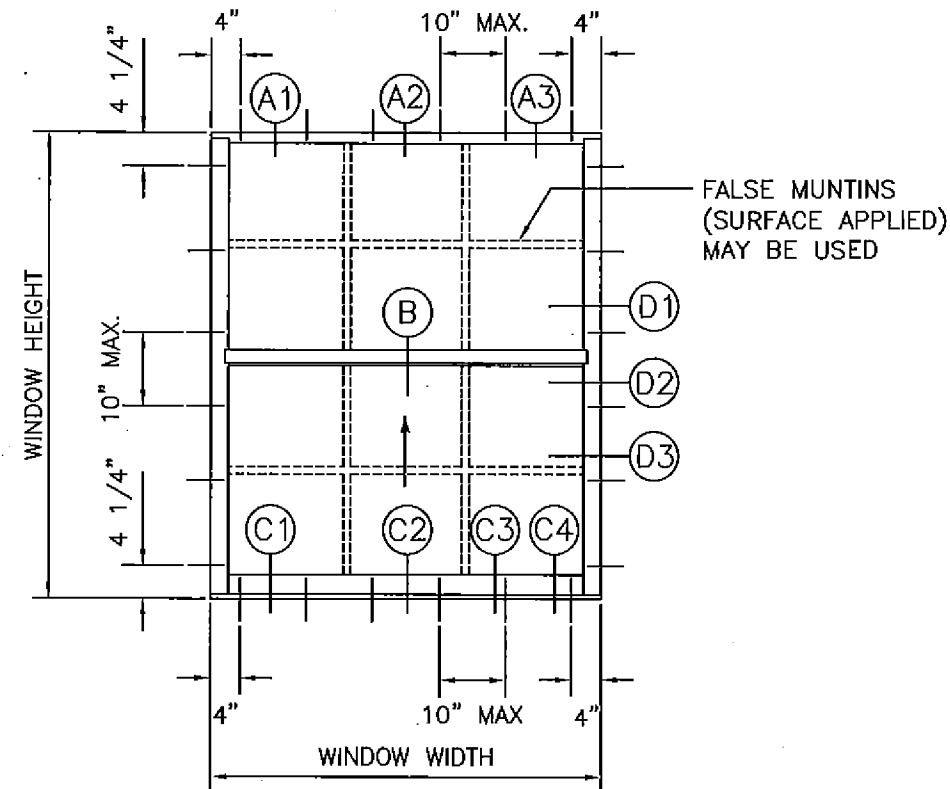
  
Jaime D. Gascon, P. E.

Product Control Section Supervisor

NOA No. 14-1224.09

Expiration Date: May 08, 2018

Approval Date: April 09, 2015



TYPICAL ELEVATION 1 OVER 1

# GENERAL NOTES:

- 1.- THIS PRODUCT MEETS THE REQUIREMENTS OF FBC 5TH EDITION (2014).
- 2.- MIAMI-DADE APPROVED SHUTTERS ARE REQUIRED.
- 3.- FOR NUMBER OF ANCHORS FOR EACH UNIT SIZE REFER TO DESIGN PRESSURES CHART.
- 4.- FOR ANCHOR TYPE AND SPACING REFER TO TYPICAL ELEVATIONS AND SECTIONS ON SHEET 2 THRU 4.
- 5.- CONCRETE / MASONRY STRUCTURE FOR UNIT ATTACHMENT SHALL COMPLY WITH THE FOLLOWING REQUIREMENTS:
  - CONCRETE STRENGTH  $F_c'28 = 3000$  PSI MIN.
  - CMU AS PER ASTM C90. CMU MUST BE 8-INCH THICK, NORMAL WEIGHT BLOCKS WITH A MINIMUM COMPRESSIVE STRENGTH OF 1.9 KSI.
  - FILLED CMU  $F_m' = 2000$  PSI MIN.
- 6.- USE NON-SHRINK, NON-METALIC HYDRAULIC CEMENT GROUT PER ASTM C1107/C1107M STANDARD SPECIFICATION FOR PACKAGED DRY.
- 7.- WOOD HOST STRUCTURE SHALL BE "SOUTHERN YELLOW PINE"  $G= 0.55$  OR GREATER DENSITY.
- 8.- STEEL HOST STRUCTURE SHALL NOT BE LESS THAN 18 GAUGE. STEEL SHALL BE  $F_y = 36$  KSI MIN.
- 9.- THE THICKNESS OF THE ALUMINUM HOST STRUCTURE SHALL NOT BE LESS THAN 1/8". ALUMINUM SHALL BE 6063-T6.
- 10.- 1X OR 2X WOOD BUCKS NOT INCLUDED IN THE SCOPE OF THIS PRODUCT APPROVAL SHALL BE PROPERLY ATTACHED TO SUSTAIN AND TRANSFER THE LOADS IMPOSED BY THE GLAZING SYSTEM TO THE STRUCTURE AND SHALL BE APPROVED BY THE BUILDING OFFICIAL PRIOR TO DOOR INSTALLATION.
- 11.- ALUMINUM IN CONTACT WITH DISSIMILAR MATERIALS SHALL BE PROTECTED (BY OTHERS) AS SPECIFIED IN FBC 5TH EDITION (2014).

## GLASS:

1/8 ANNEALED, 3/16" ANNEALED, 1/4" ANNEALED OR 1/4" TEMPERED GLASS.

DESIGN PRESSURES CHART - PSF											
WINDOW DIMENSION		1/4" TAPCONS ANCHOR SCHEDULE		DESIGN PRESSURE - PSF							
WIDTH	HEIGHT	PER HEAD AND SILL	PER JAMB	DSB-ANN. GLASS		3/16" ANN. GLASS		1/4" ANN. GLASS		1/4" TEMP. GLASS	
				EXT.	INT.	EXT.	INT.	EXT.	INT.	EXT.	INT.
19 1/8"	26"	3	3	75.3	204.0	75.3	209.0	75.3	209.0	75.3	209.0
26 1/2"		3		75.3	146.0	75.3	200.2	75.3	209.0	75.3	209.0
37"		4		75.3	121.8	75.3	121.8	75.3	171.7	75.3	171.7
53 1/8"		6		75.3	76.0	75.3	76.0	75.3	154.0	75.3	154.0
19 1/8"	38 3/8"	3	4	75.3	130.0	75.3	194.4	75.3	194.4	75.3	194.4
26 1/2"		3		75.3	88.0	75.3	160.9	75.3	160.9	75.3	160.9
37"		4		58.2	58.2	75.3	93.3	75.3	145.7	75.3	145.7
53 1/8"		6		42.5	42.5	55.5	55.5	75.3	112.4	75.3	112.4
19 1/8"	50 5/8"	3	6	75.3	93.2	75.3	200.0	75.3	204.6	75.3	204.6
26 1/2"		3		74.0	74.0	75.3	130.0	75.3	162.2	75.3	162.2
37"		4		50.6	50.6	75.3	81.2	75.3	124.0	75.3	135.2
53 1/8"		6		30.7	30.7	45.6	45.6	75.3	87.1	75.3	92.3
19 1/8"	63"	3	7	73.0	73.0	75.3	163.0	75.3	183.5	75.3	183.5
26 1/2"		3		58.8	58.8	75.3	102.0	75.3	141.0	75.3	142.2
37"		4		45.5	45.5	73.8	73.8	75.3	95.8	75.3	113.9
53 1/8"		6		30.2	30.2	40.0	40.0	62.6	62.6	75.3	96.9
19 1/8"	74 1/4"	3	8	60.8	60.8	75.3	143.0	75.3	173.2	75.3	173.2
26 1/2"		3		48.6	48.6	75.3	84.2	75.3	120.0	75.3	132.6
37"		4		40.0	40.0	63.5	63.5	75.3	82.1	75.3	103.9
53 1/8"		6		-	-	-	-	55.8	55.8	75.0	75.0

PRODUCT REVISED  
as complying with the Florida  
Building Code  
Acceptance No. 14-1224.09  
Expiration Date 05/08/2018  
By Francisco Hernandez  
Miami Dade Product Control

12-05-14

FRANCISCO HERNANDEZ  
FLORIDA PE # 51393

Sunshine Windows  
Manufacturing, Inc.  
1745 W. 33rd Place  
Hialeah, Florida 33012  
Ph: (305)364-9952  
Fax: (305)828-5118

SERIES 2000 ALUMINUM  
SINGLE HUNG  
NON-IMPACT RESISTANT GLASS

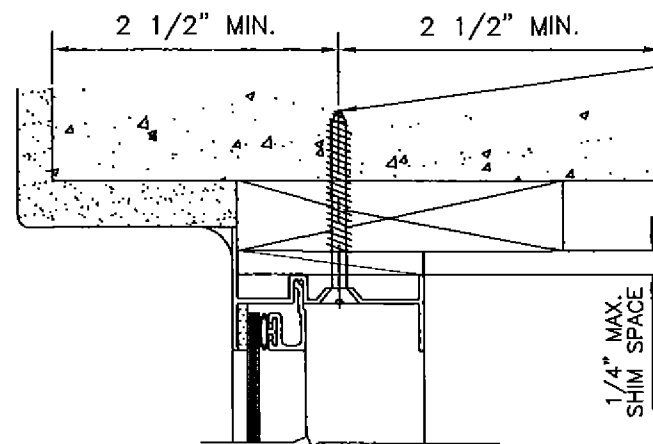
DATE	REVISION	REVISION
03-06-12	1	UPDATED FOR 2010 FBC
12-05-14	2	REVISION IN COMPLIANCE WITH FBC 5TH EDITION (2014)

DRAWING No.  
SH08-02

DATE: 04-14-08

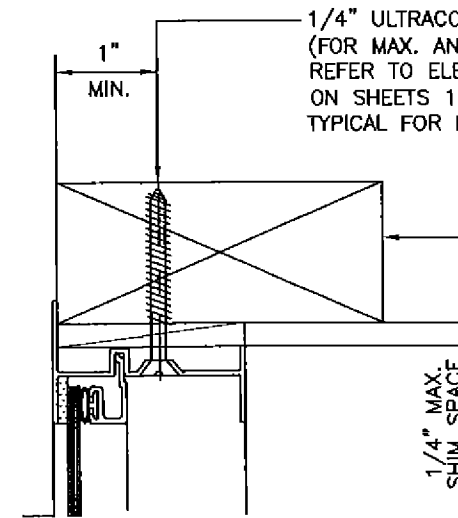
SCALE: 1/2"=1"

SHEET 1 OF 6



1/4" ULTRACON 1 1/4" MIN. EMBEDMENT INTO CONCRETE THROUGH 1 BY WOOD BUCK.  
(FOR MAX. ANCHOR SPACING AND NUMBER OF ANCHORS REFER TO ELEVATION AND DESIGN PRESSURES CHART ON SHEETS 1 OF 6).  
TYPICAL FOR HEAD.

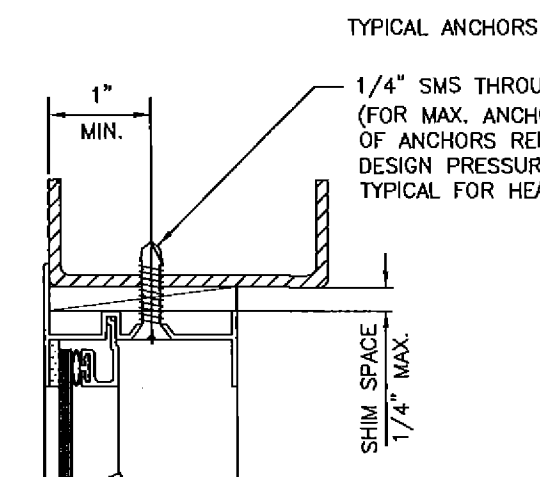
**DETAIL A1**  
**ATTACHMENT TO CONCRETE**



1/4" ULTRACON 1 1/2" MIN. PENETRATION INTO WOOD.  
(FOR MAX. ANCHOR SPACING AND NUMBER OF ANCHORS REFER TO ELEVATION AND DESIGN PRESSURES CHART ON SHEETS 1 OF 6).  
TYPICAL FOR HEAD.

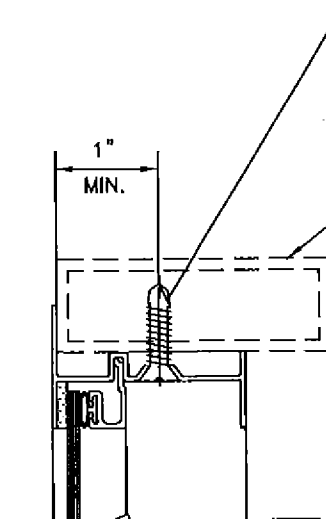
2 BY WOOD BUCK BY OTHERS.  
MUST BE PROPERLY ATTACHED TO TRANSFER GLAZING SYSTEM LOADS TO THE STRUCTURE. SHALL BE APPROVED BY BUILDING OFFICIAL PRIOR TO WINDOW INSTALLATION.

**DETAIL A2**  
**ATTACHMENT TO WOOD**



TYPICAL ANCHORS  
1/4" SMS THROUGH METAL.  
(FOR MAX. ANCHOR SPACING AND NUMBER OF ANCHORS REFER TO ELEVATION AND DESIGN PRESSURES CHART ON SHEET 1 OF 6).  
TYPICAL FOR HEAD.

**DETAIL A3**  
**ATTACHMENT TO METAL STRUCTURE DETAIL**  
(STEEL OR ALUMINUM 1/8" MIN. THICKNESS)



1/4" SMS THROUGH METAL.  
(FOR MAX. ANCHOR SPACING AND NUMBER OF ANCHORS REFER TO ELEVATION AND DESIGN PRESSURES CHART ON SHEET 1 OF 6).  
TYPICAL FOR HEAD.

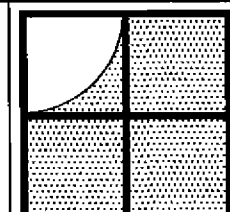
MIAMI-DADE COUNTY APPROVED MULLION. (UNDER SEPARATE APPROVAL)

**DETAIL A4**  
**ATTACHMENT TO MULLION**  
(STEEL OR ALUMINUM 1/8" MIN. THICKNESS)

**TYPICAL HEAD SECTIONS**

PRODUCT REVISED  
as complying with the Florida  
Building Code  
Acceptance No. 14-1224-09  
Expiration Date 05/08/2018  
By *[Signature]*  
Miami Dade Product Control

*[Signature]*  
12-05-14  
FRANCISCO HERNANDEZ  
FLORIDA PE # 51393

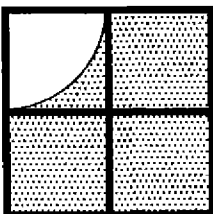


Sunshine Windows  
Manufacturing, Inc.  
1745 W. 33rd Place  
Hialeah, Florida 33012  
Ph: (305)364-9952  
Fax: (305)828-5118

**SERIES 2000 ALUMINUM**  
**SINGLE HUNG**  
**NON-IMPACT RESISTANT GLASS**

No	DATE	REVISION
1	03-12-12	UPDATED FOR 2010 FBC
2	12-05-14	REVISION IN COMPLIANCE WITH FBC 5TH EDITION (2014)

DRAWING No.  
SH08-02  
DATE: 04-14-08  
SCALE: 1/2"=1"  
SHEET 2 OF 6

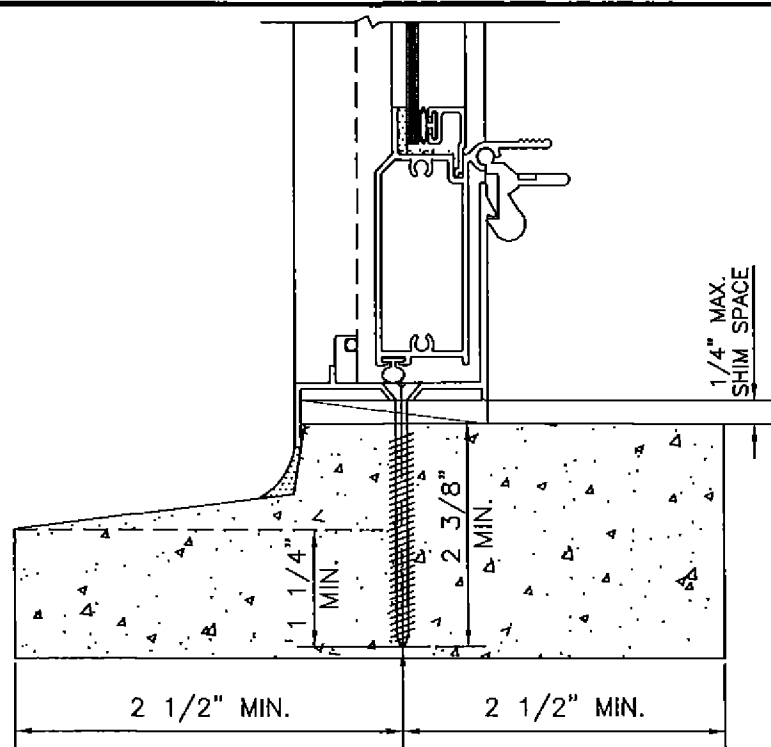


Sunshine Windows  
Manufacturing, Inc.  
1745 W. 33rd Place  
Hialeah, Florida 33012  
Ph: (305)364-9952  
Fax: (305)828-5118

**SERIES 2000 ALUMINUM  
SINGLE HUNG  
NON-IMPACT RESISTANT GLASS**

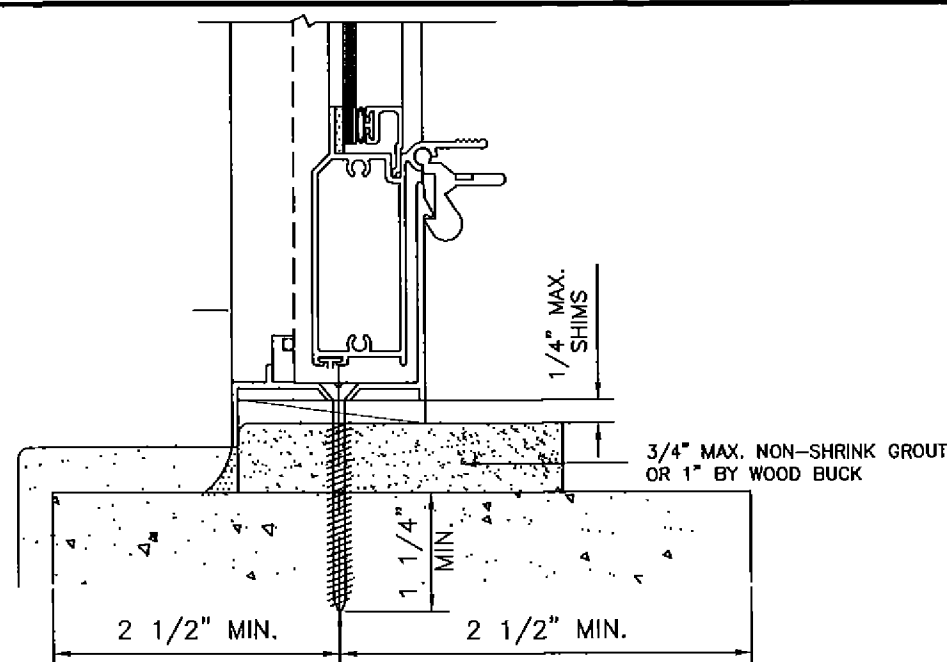
No	DATE	REVISION
1	03-12-12	UPDATED FOR 2010 FBC
2	12-05-14	REVISION IN COMPLIANCE WITH FBC 5TH EDITION (2014)

DRAWING No.  
**SH08-02**  
DATE: 04-14-08  
SCALE: 1/2"=1"  
SHEET 3 OF 6



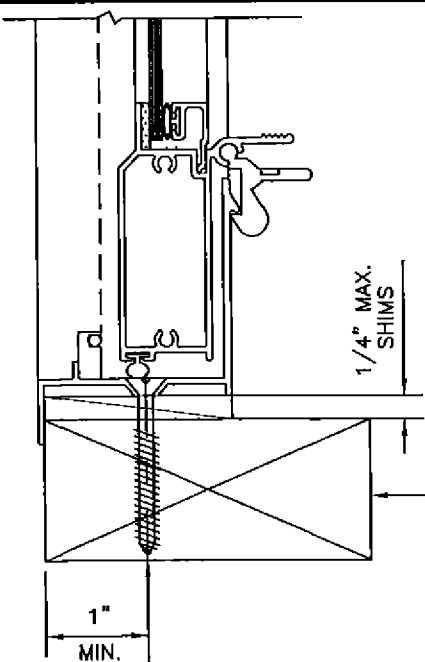
1/4" ULTRACON 1 1/4" MIN. EMBEDMENT INTO CONCRETE  
(FOR MAX. ANCHOR SPACING AND NUMBER OF ANCHORS REFER TO ELEVATION AND DESIGN PRESSURE CHART ON SHEETS 1 OF 6).  
TYPICAL FOR SILL ONLY.

**DETAIL C1  
ATTACHMENT TO PRE-CAST SILL**



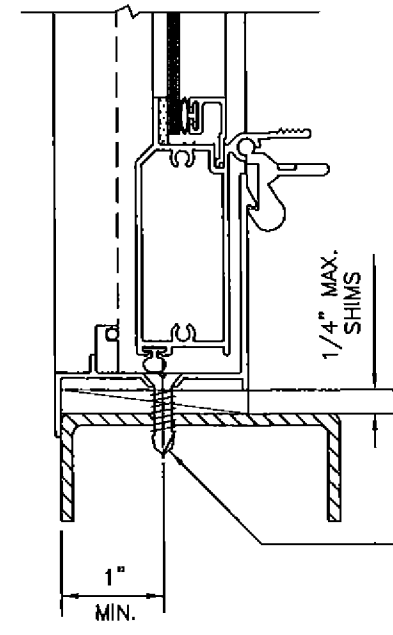
1/4" ULTRACON 1 1/4" MIN. EMBEDMENT INTO CONCRETE THROUGH 1" BY WOOD BUCK OR NON-SHRINK NON-METALLIC GROUT (FOR MAX. ANCHOR SPACING AND NUMBER OF ANCHORS REFER TO ELEVATION AND DESIGN PRESSURES CHART ON SHEET 1 OF 6).  
TYPICAL FOR SILL ONLY.

**DETAIL C2  
ATTACHMENT TO CONCRETE**



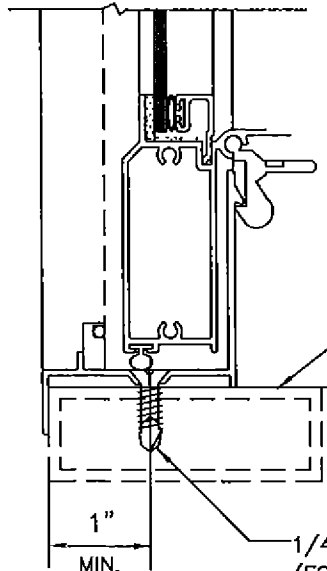
2 BY WOOD BUCK BY OTHERS. MUST BE PROPERLY ATTACHED TO TRANSFER GLAZING SYSTEM LOADS TO THE STRUCTURE. SHALL BE APPROVED BY BUILDING OFFICIAL PRIOR TO WINDOW INSTALLATION.  
1/4" SMS 1 1/2" MIN. PENETRATION INTO WOOD. (FOR MAX. ANCHOR SPACING AND NUMBER OF ANCHORS REFER TO ELEVATION AND DESIGN PRESSURES CHART ON SHEET 1 OF 6).  
TYPICAL FOR SILL.

**DETAIL C3  
ATTACHMENT TO WOOD**



(FOR MAX. ANCHOR SPACING AND NUMBER OF ANCHORS REFER TO ELEVATION AND DESIGN PRESSURES CHART ON SHEET 1 OF 6).  
TYPICAL FOR SILL.

**DETAIL C4  
ATTACHMENT TO METAL STRUCTURE  
(STEEL OR ALUMINUM 1/8" MIN. THICKNESS)**



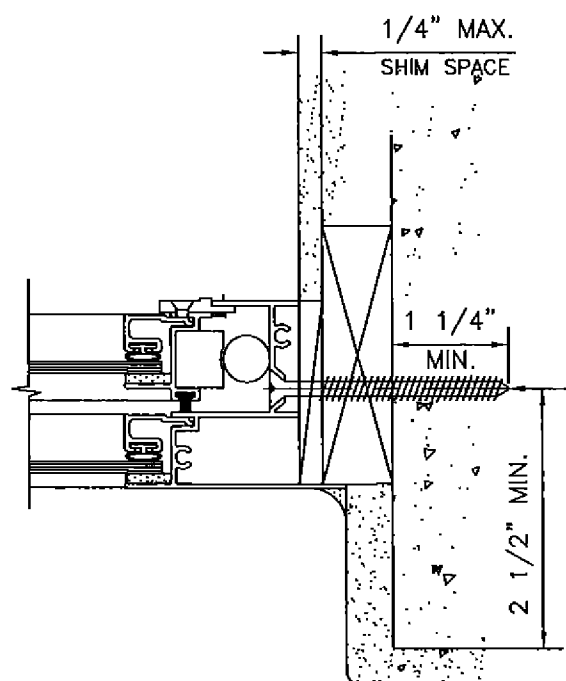
MIAMI-DADE COUNTY APPROVED MULLION. (UNDER SEPARATE APPROVAL)  
1/4" SMS THROUGH METAL.  
(FOR MAX. ANCHOR SPACING AND NUMBER OF ANCHORS REFER TO ELEVATION AND DESIGN PRESSURES CHART ON SHEET 1 OF 6).  
TYPICAL FOR SILL.

**DETAIL C5  
ATTACHMENT TO MULLION  
(STEEL OR ALUM. 1/8" MIN. THICKNESS)**

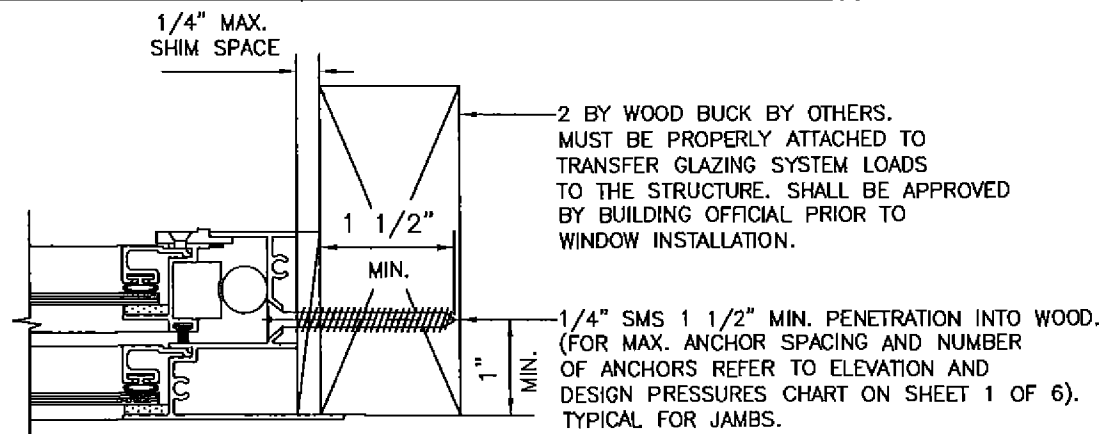
**TYPICAL SILL SECTIONS**

PRODUCT REVISED  
as complying with the Florida  
Building Code  
Acceptance No. 14-1224-09  
Expiration Date 05/08/2018  
By Francisco Hernandez  
Miami Dade Product Control

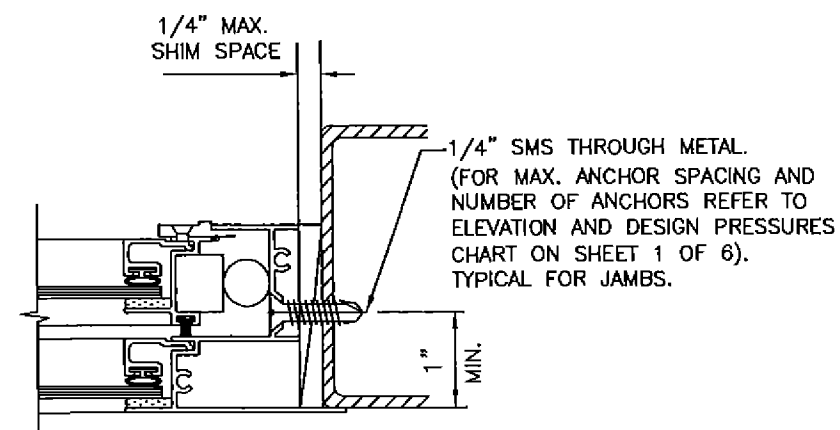
12-05-14  
FRANCISCO HERNANDEZ  
FLORIDA PE # 51393



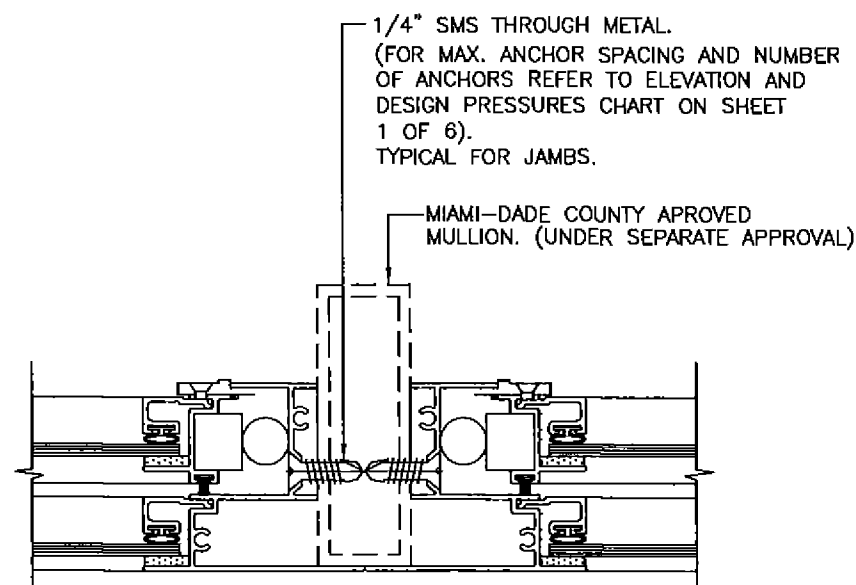
**DETAIL D1**  
**ATTACHMENT TO CONCRETE**



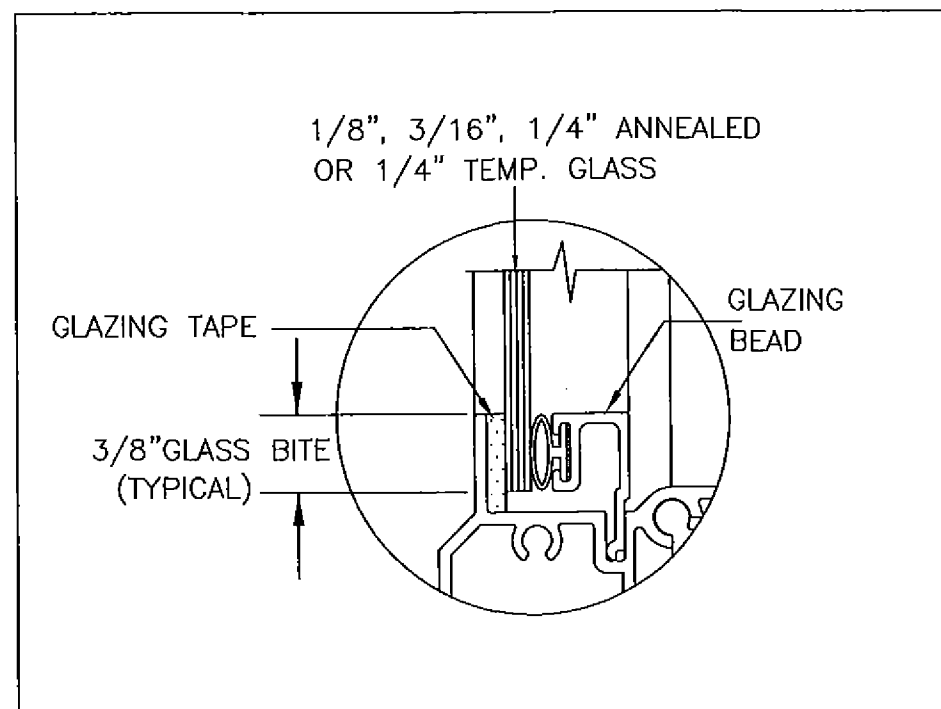
**DETAIL D2**  
**ATTACHMENT TO WOOD**



**DETAIL D3**  
**ATTACHMENT TO METAL STRUCTURE**  
(STEEL OR ALUMINUM 1/8" MIN. THICKNESS)



**DETAIL D4**  
**ATTACHMENT TO MULLION**

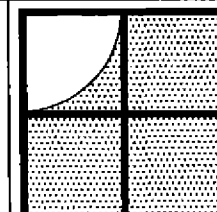


**TYPICAL JAMB SECTIONS**

PRODUCT REVISED  
as complying with the Florida  
Building Code  
Acceptance No. 14-1224.09  
Expiration Date 05/08/2018  
By *[Signature]*  
Miami Dade Product Control

*[Signature]*  
12-05-14

FRANCISCO HERNANDEZ  
FLORIDA PE # 51393

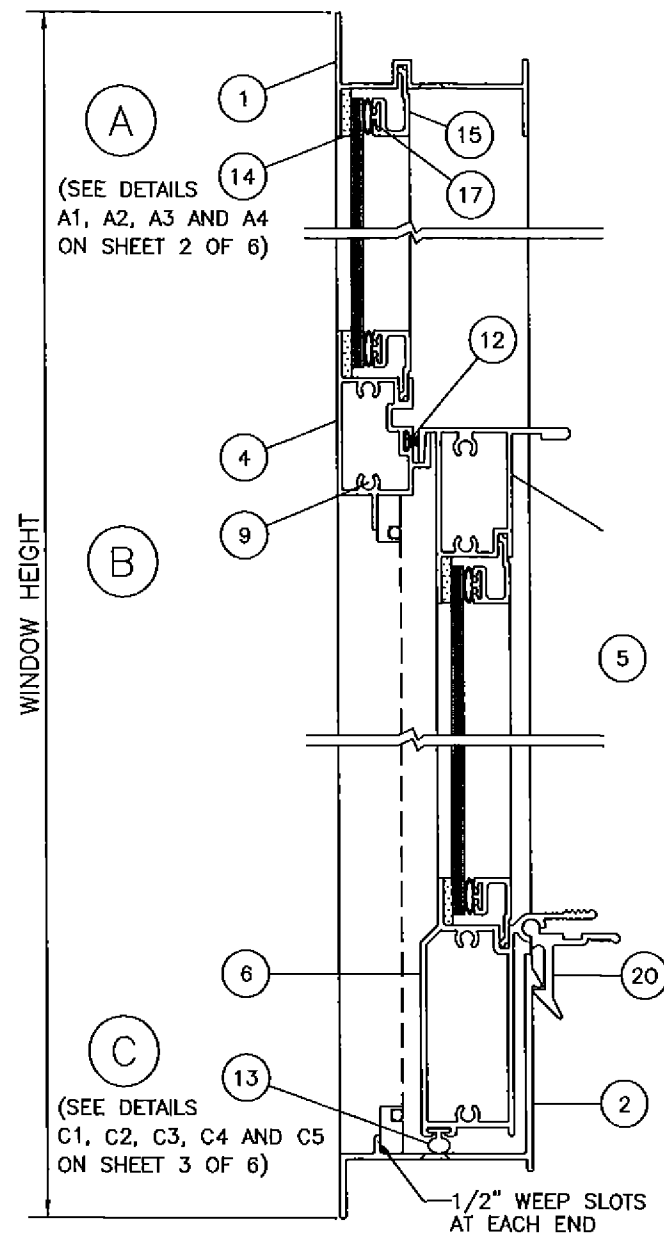


Sunshine Windows  
Manufacturing, Inc.  
1745 W. 33rd Place  
Hialeah, Florida 33012  
Ph: (305)384-9952  
Fax: (305)828-5118

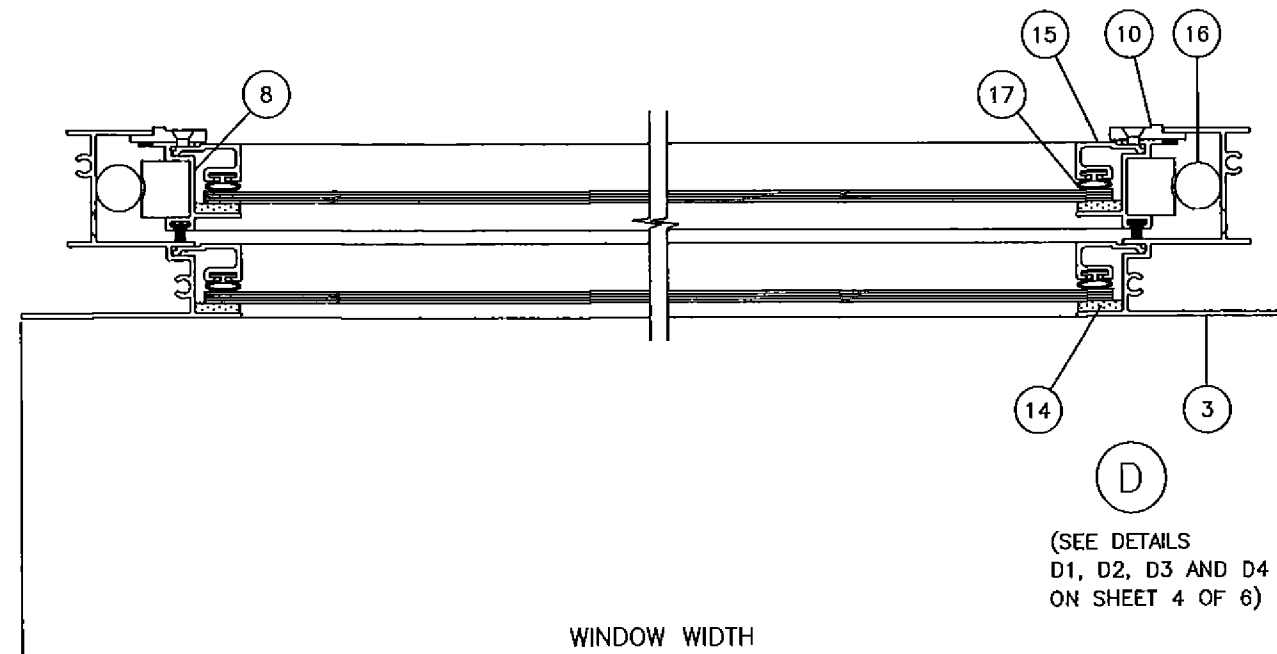
**SERIES 2000 ALUMINUM**  
**SINGLE HUNG**  
**NON-IMPACT RESISTANT GLASS**

No	DATE	REVISION
1	03-12-12	UPDATED FOR 2010 FBC
2	12-05-14	REVISION IN COMPLIANCE WITH FBC 5TH EDITION (2014)

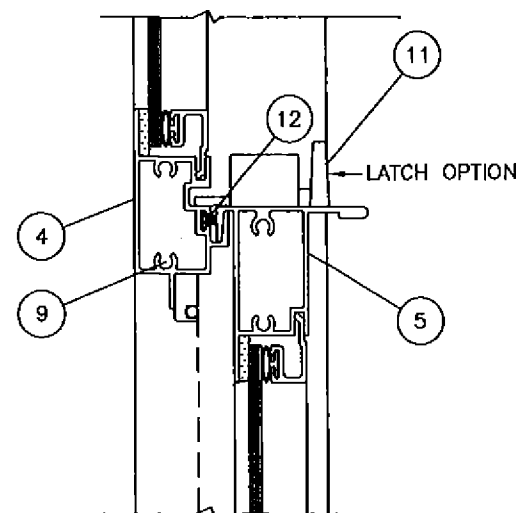
DRAWING No.  
**SH08-02**  
DATE: 04-14-08  
SCALE: 1/2"=1"  
SHEET 4 OF 6



VERTICAL SECTION



HORIZONTAL SECTION

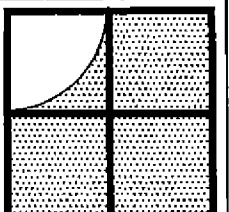


VERTICAL SECTION WITH TOP LOCK

# NON-IMPACT RESISTANT WINDOW

PRODUCT REVISED  
as complying with the Florida  
Building Code  
Acceptance No. 14-1224.09  
Expiration Date 05/08/2018  
By *[Signature]*  
Miami Dade Product Control

*[Signature]*  
12-05-14  
FRANCISCO HERNANDEZ  
FLORIDA PE # 51393



Sunshine Windows  
Manufacturing, Inc.  
1745 W. 33rd Place  
Hialeah, Florida 33012  
Ph: (305)364-9952  
Fax: (305)828-5118

## SERIES 2000 ALUMINUM SINGLE HUNG NON-IMPACT RESISTANT GLASS

No	DATE	REVISION
1	03-06-12	NO CHANGE THIS SHEET
2	12-05-14	REVISION IN COMPLIANCE WITH FBC 5TH EDITION (2014)

DRAWING No.  
SH08-02  
DATE: 4-14-08  
SCALE: 1/2"=1"

SHEET 5 OF 6

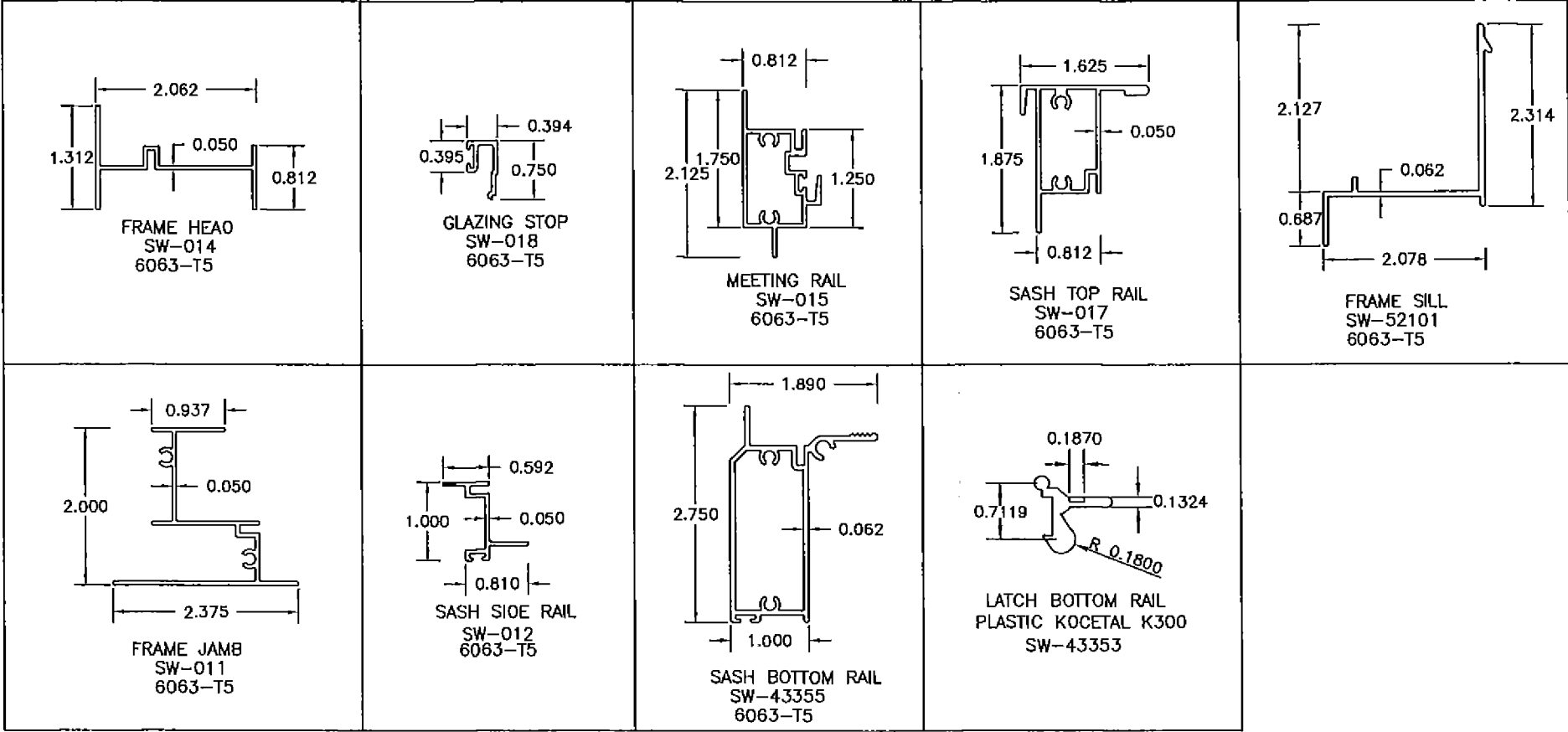


MATERIAL LIST

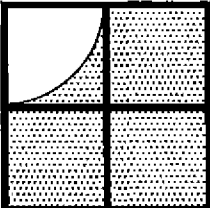
ITEM #	PART #	REQD.	DESCRIPTION	MATERIAL
1	SW-014	1	FRAME HEAD	6063-T5
2	SW-52101	1	FRAME SILL	6063-T5
3	SW-011	2	FRAME JAMB	6063-T5
4	SW-40111	1	MEETING RAIL	6063-T5
5	SW-017	1	SASH TOP RAIL	6063-T5
6	SW-43355	1	SASH BOTTOM RAIL	6063-T5
7	SW8202B	2	SASH CAM	NYLON
8	SW-012	2	SASH SIDE RAIL	6063-T5
9	SW-AS	14	ASSEMBLY SCREWS	# 8X1" SMS
10	SW-8202A	4/VENT	FACE GUIDES	NYLON

MATERIAL LIST

ITEM #	PART #	REQD.	DESCRIPTION	MATERIAL
11	SW43353	2/VENT	LATCH BOTTOM RAIL	PLASTIC
12	SW-1820	AS REQ	SEAL PILE	FELT
13	SW-3257	AS REQ	WEATHER STRIP BULB	VINYL
14	SW-1520	AS REQ	GLAZING TAPE	FOAM
15	SW-018	AS REQ	GLAZING BEAD	6063-T5
16	SW-540	2	SPIRAL BALANCE	ALUMINUM
17	SW-667	2/VENT	LATCH	ZINC
18	SW-3082	AS REQ	WEATHER STRIP BULB	VINYL



NON- IMPACT RESISTANT WINDOW



Sunshine Windows  
Manufacturing, Inc.  
1745 W. 33rd Place  
Hialeah, Florida 33012  
Ph: (305)364-9952  
Fax:(305)828-5118

SERIES 2000 ALUMINUM  
SINGLE HUNG  
NON-IMPACT RESISTANT GLASS

No	DATE	REVISION	NO CHANGE THIS SHEET
1	03-06-12		
2	12-05-14		

REVISION IN COMPLIANCE WITH  
FBC 5TH EDITION (2014)

DRAWING No.  
SH08-02

DATE: 4-14-08

SCALE: 1/2"=1"

SHEET 6 OF 6

12-05-14

FRANCISCO HERNANDEZ  
FLORIDA PE # 51393