

**LEGEND**

- RESIDENTIAL
- GOLF COURSE
- (M) GOLF COURSE MAINTENANCE FACILITY
- (CL) GOLF COURSE CLUBHOUSE
- E/F EMERGENCY MEDICAL/FIRE STATION
- O/R OFFICE/RETAIL COMMERCIAL
- C/H COMMERCIAL/HOTEL
- CANAL
- LAKE
- W WETLAND (CONSERVATION AREAS)
- P PARK
- INTERSECTION WITH TURN LANES AND SIGNALIZATION
- RIGHT IN AND RIGHT OUT
- RIGHT IN AND RIGHT OUT AND NORTH BOUND LEFT
- RESIDENTIAL ACCESS ONLY
- SECURITY GATEHOUSE

**LEGEND**

**NORTHEAST AND SOUTHEAST QUADRANTS (COLLIER COUNTY)**

- \*RESIDENTIAL
- OFFICE/RETAIL COMMERCIAL
- GOLF COURSE/RECREATION/PARK/RIGHT-OF-WAY
- LAKE & WATER MANAGEMENT
- CONSERVATION
- SUBTOTAL

**NORTHWEST QUADRANT (CITY OF NAPLES)**

- \*RESIDENTIAL
- OFFICE/RETAIL COMMERCIAL
- GOLF COURSE/RECREATION/RIGHT-OF-WAY
- LAKE & WATER MANAGEMENT
- CONSERVATION
- SUBTOTAL

TOTAL

**GENERAL NOTES**

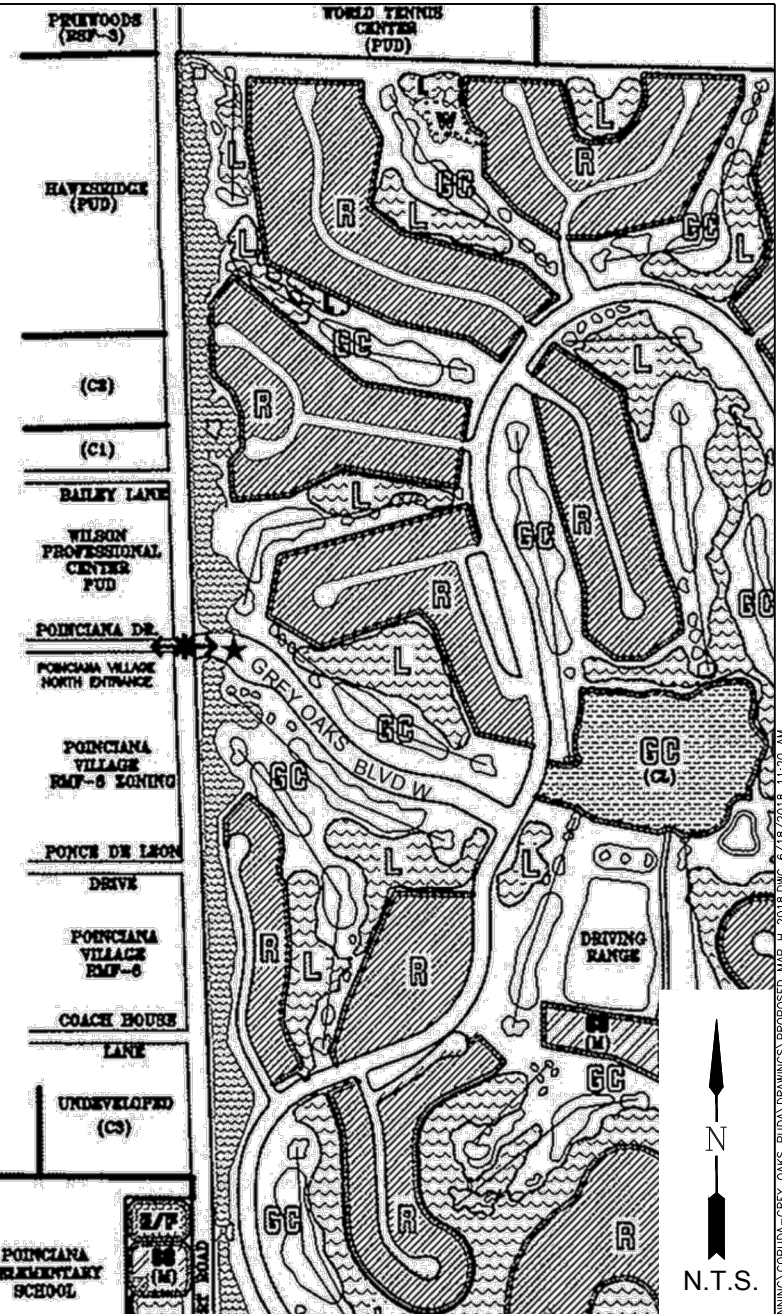
- 1) WETLAND PRESERVATION AREAS ARE APPROXIMATE AND WILL BE REFINED DURING THE PERMITTING PROCESS.
  - 2) ALL ACREAGES ARE APPROXIMATE AND SUBJECT TO CHANGE AND/OR VARIATION.
- \* THE DEVELOPER MAY RELOCATE UP TO 200 MULTI-FAMILY UNITS FROM THE NORTHWEST QUADRANT TO THE NORTHEAST QUADRANT SO LONG AS THE TOTAL NUMBER OF RESIDENTIAL UNITS IN GREY OAKS DOES NOT EXCEED 1775 UNITS.

UNITS/S.E.	ACRES
1311 UNITS	332.06±
1,203,091 S.F.G.L.A.	70.40±
54 HOLES	614.31±
	225.41±
	5.32±
	1247.50±

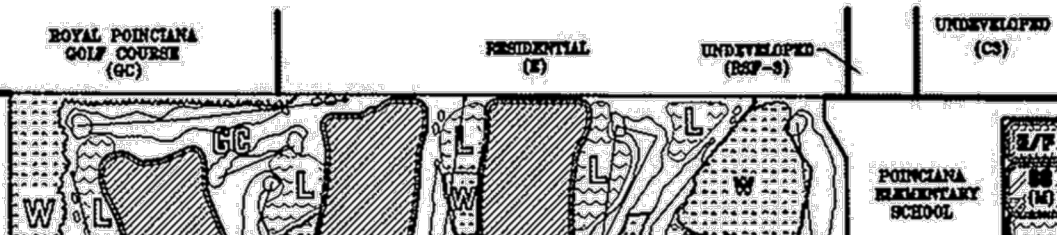
464 UNITS	100.71±
100,000 S.F.G.L.A.	14.40±
18 HOLES	107.40±
	78.04±
	55.34±
	353.89±

TOTAL

1601.39±



STAMP



LEGEND



Civil Engineers • Land Surveyors • Planners • Landscape Architects  
 Cert. of Auth. EB 0005151 Cert. of Auth. LB 0005151 Business LC 26000266  
 Bonita Springs: 239.947.1144 www.GradyMinor.com Fort Myers: 239.690.4380

GradyMinor and Associates, P.A.  
 3800 Via Del Rey  
 Bonita Springs, Florida 34134

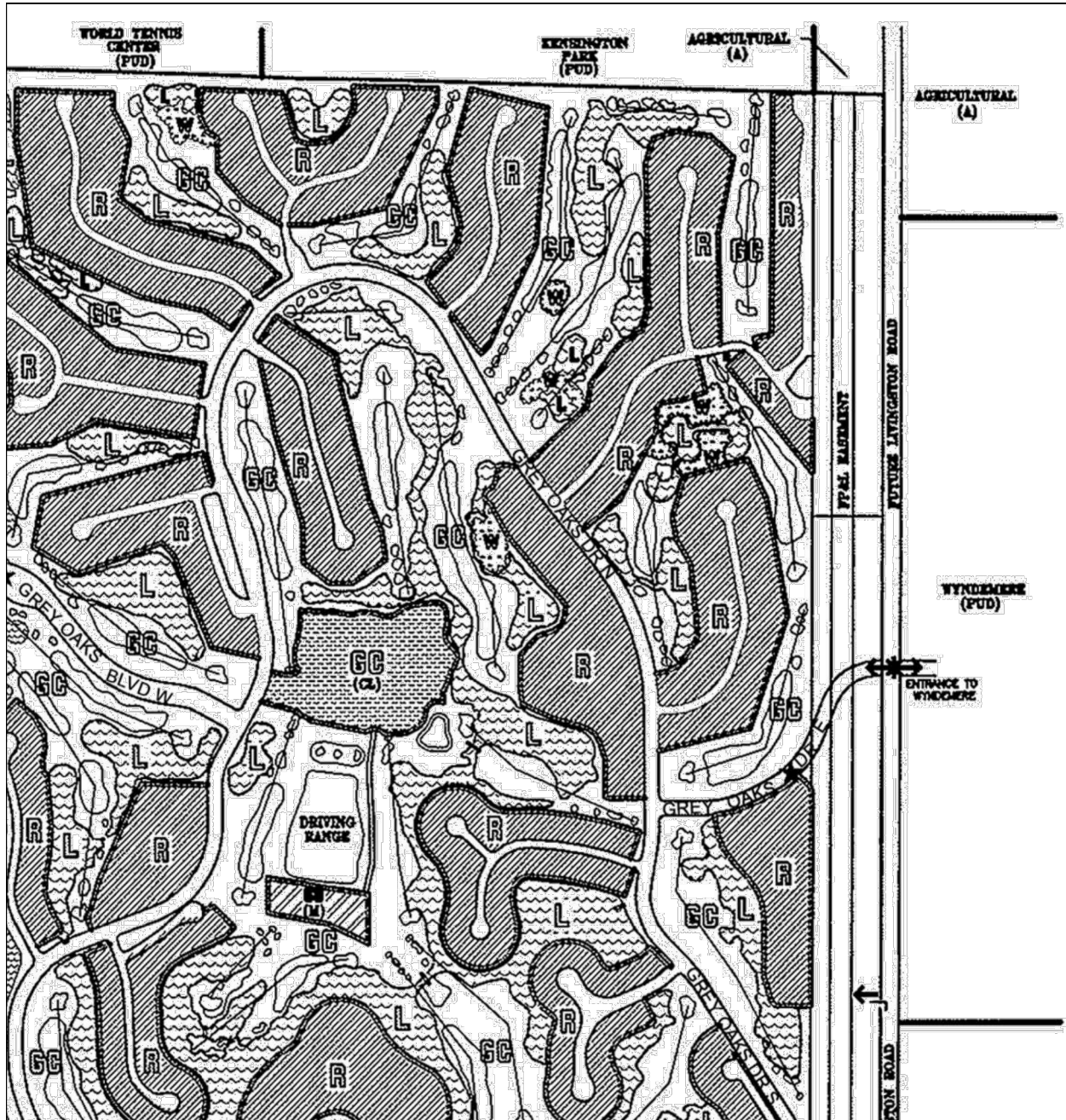
GREY OAKS

PUD MASTER PLAN – MAP H-1

REVISED  
 06/14/2018

SCALE: N.T.S.
JOB CODE: GOPUDA
DATE: JUNE 2018
FILE NAME: PROPOSED MAP H 2018
SHEET 1 OF 4

G:\PLANNING\PROJ - PLANNING\GOPUDA-GREY OAKS PUDA DRAWINGS\PROPOSED MAP H 2018.DWG 6/15/2018 11:20 AM



WORLD TENNIS CENTER (PUD)

KINGSINGTON PARK (PUD)

AGRICULTURAL (A)

AGRICULTURAL (A)

P&L BARRAMENT

FUTURE LIVINGSTON ROAD

WYNDERMERE (PUD)

ENTRANCE TO WYNDERMERE

LIVINGSTON ROAD

LEGEND



**GradyMinor**

0. Grady Minor and Associates, P.A.  
3800 Via Del Rey  
Bonita Springs, Florida 34134

Civil Engineers • Land Surveyors • Planners • Landscape Architects  
Cert. of Auth. EB 0005151 Cert. of Auth. LB 0005151 Business LC 26000266

Bonita Springs: 239.947.1144 www.GradyMinor.com Fort Myers: 239.690.4380

GREY OAKS

PUD MASTER PLAN – MAP H-1

REVISED  
06/14/2018

SCALE:	N.T.S.
JOB CODE:	GOPUDA
DATE:	JUNE 2018
FILE NAME:	PROPOSED MAP H 2018
SHEET 2 OF 4	

**WilsonMiller**

Planners • Engineers • Ecologists • Surveyors  
Landscape Architects • Transportation Consultants

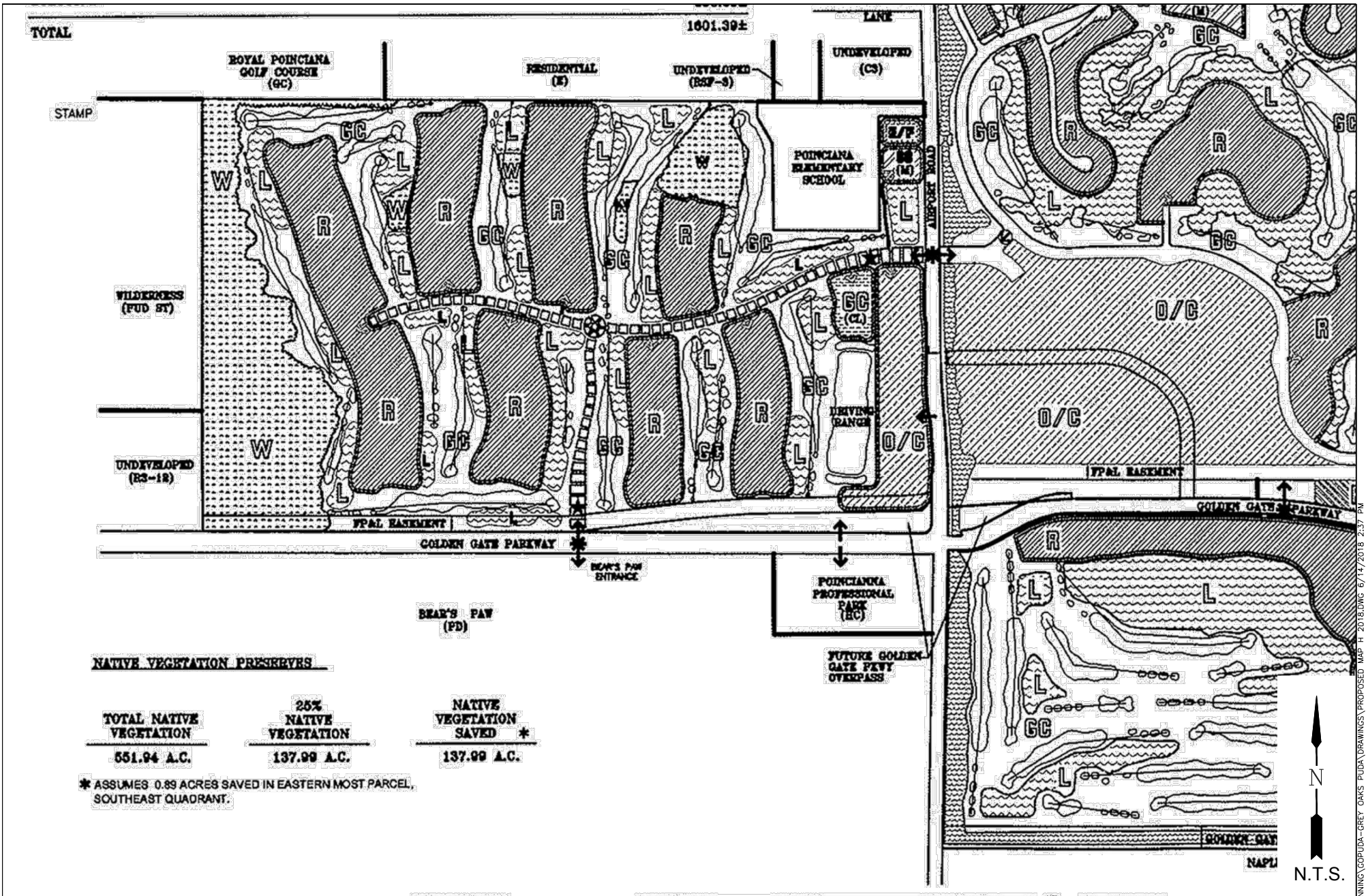
WilsonMiller, Inc.  
Naples • Fort Myers • Sarasota • Bradenton • Tampa  
3200 Bailey Lane, Suite 200 • Naples, Florida 34105-8507  
Phone 941-563-4060 • Fax 941-563-5716  
E-mail: Naples@wilsonmiller.com • Web Site: www.wilsonmiller.com

OAKS

PLAN – MAP H-1

ES GRANDE HOLDINGS, LLC





LEGEND



Civil Engineers • Land Surveyors • Planners • Landscape Architects  
 Cert. of Auth. EB 0005151 Cert. of Auth. LB 0005151 Business LC 26000266  
 Bonita Springs: 239.947.1144 www.GradyMinor.com Fort Myers: 239.690.4380

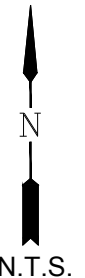
O. Grady Minor and Associates, P.A.  
 3800 Via Del Rey  
 Bonita Springs, Florida 34134

GREY OAKS

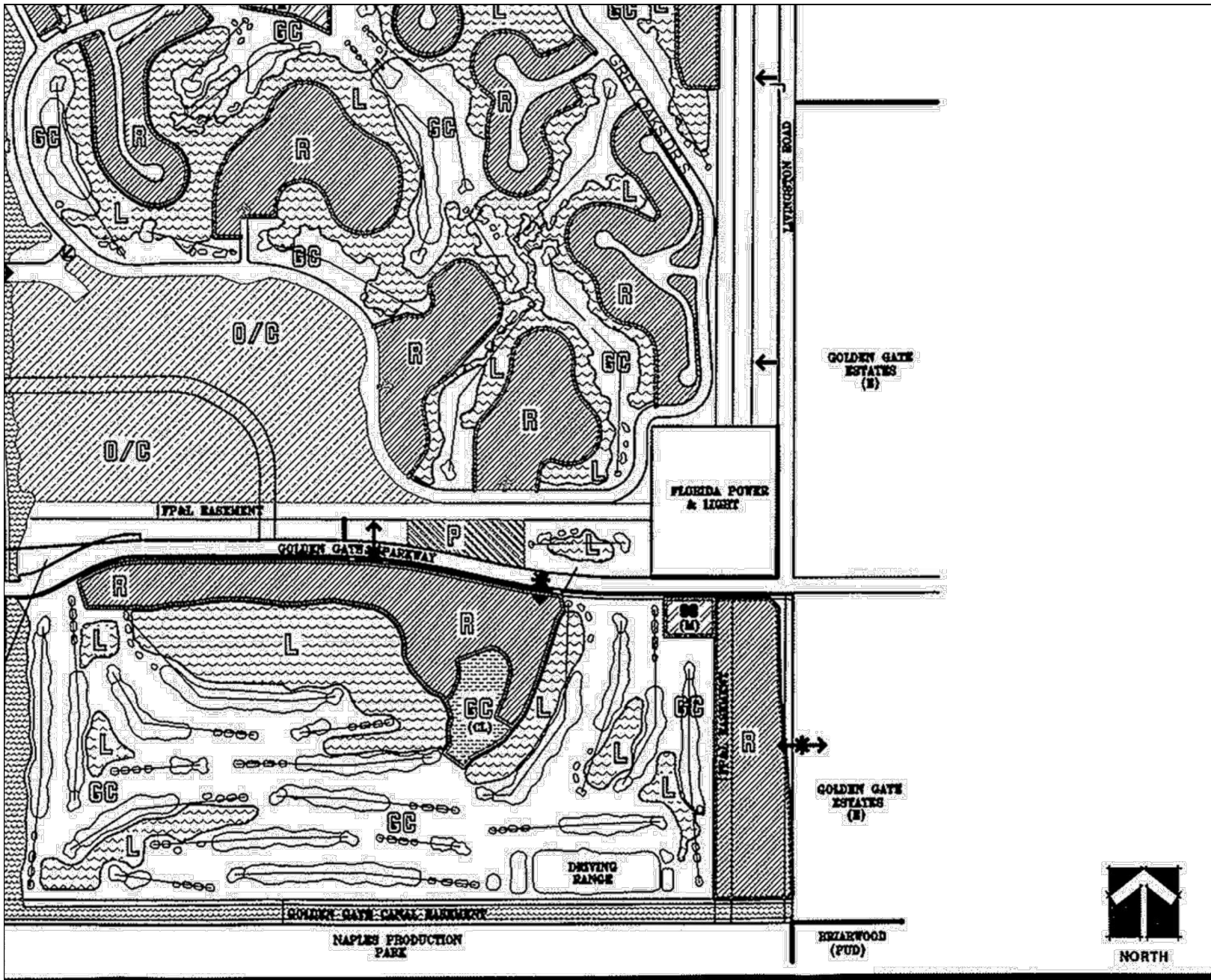
PUD MASTER PLAN – MAP H-1

REVISED  
 06/14/2018

SCALE: N.T.S.
JOB CODE: GOPUDA
DATE: JUNE 2018
FILE NAME: PROPOSED MAP H 2018
SHEET 3 OF 4



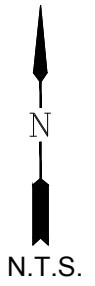
G:\PLANNING\PROJ - PLANNING\GOPUDA-GREY OAKS PUDA DRAWINGS\PROPOSED MAP H 2018.DWG 6/14/2018 2:37 PM



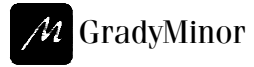
**GREY OAKS**  
**PUD MASTER PLAN - MAP H-1**  
 PREPARED FOR: NAPLES GRANDE HOLDINGS

Revised by:  
**Q. Grady Minor & Associates, P.A.**  
 06/14/2018

SEC 23-24 TWP 49S RGE 25E  
 Designed by:  
 Drawn by: **DBG/2361**  
 Checked by:  
 Approved by:  
 Date: **MAR. 2007**  
 Scale: **8.5" x 11" = N.T.S.**  
 PIN: **N0120-053-002**  
 File #: **D-N0120-192-1**  
 Sheet **1** of **1**



**LEGEND**



Civil Engineers • Land Surveyors • Planners • Landscape Architects  
 Cert. of Auth. EB 0005151 Cert. of Auth. LB 0005151 Business LC 26000266  
 Bonita Springs: 239.947.1144 www.GradyMinor.com Fort Myers: 239.690.4380

Q. Grady Minor and Associates, P.A.  
 3800 Via Del Rey  
 Bonita Springs, Florida 34134

**GREY OAKS**

PUD MASTER PLAN - MAP H-1

REVISED  
 06/14/2018

SCALE:	N.T.S.
JOB CODE:	GOPUDA
DATE:	JUNE 2018
FILE NAME:	PROPOSED MAP H 2018
SHEET	4 OF 4