

**MARCO SHORES/FIDDLER'S CREEK DRI/PUD
EXHIBIT V.B. - EXISTING FUTURE LAND USE MAP
SUBJECT SITE: 3,931.99± ACRES**

URBAN DESIGNATION

MIXED USE DISTRICT



URBAN RESIDENTIAL SUBDISTRICT



RESIDENTIAL DENSITY BANDS



URBAN COASTAL FRINGE SUBDISTRICT



URBAN RESIDENTIAL FRINGE SUBDISTRICT

BUSINESS PARK SUBDISTRICT

OFFICE AND INFILL COMMERCIAL SUBDISTRICT

PUD NEIGHBORHOOD VILLAGE CENTER SUBDISTRICT

RESIDENTIAL MIXED USE NEIGHBORHOOD SUBDISTRICT

ORANGE BLOSSOM
MIXED USE SUBDISTRICT

VANDERBILT BEACH / COLLIER BLVD.
COMMERCIAL SUBDISTRICT

HENDERSON CREEK
MIXED USE SUBDISTRICT

RESEARCH AND TECHNOLOGY PARK SUBDISTRICT

BUCKLEY MIXED USE SUBDISTRICT

COMMERCIAL MIXED USE SUBDISTRICT

LIVINGSTON ROAD / RADIO ROAD
COMMERCIAL INFILL SUBDISTRICT

VANDERBILT BEACH ROAD
NEIGHBORHOOD COMMERCIAL SUBDISTRICT

COLLIER BOULEVARD COMMUNITY
FACILITY SUBDISTRICT

INDUSTRIAL DISTRICT

BUSINESS PARK SUBDISTRICT

RESEARCH AND TECHNOLOGY PARK SUBDISTRICT

COMMERCIAL DISTRICT



MIXED USE
ACTIVITY CENTER SUBDISTRICT



INTERCHANGE ACTIVITY CENTER SUBDISTRICT



LIVINGSTON / PINE RIDGE
COMMERCIAL INFILL SUBDISTRICT

BUSINESS PARK SUBDISTRICT

RESEARCH AND TECHNOLOGY PARK SUBDISTRICT



LIVINGSTON ROAD / EATONWOOD LANE
COMMERCIAL INFILL SUBDISTRICT



LIVINGSTON ROAD
COMMERCIAL INFILL SUBDISTRICT

COMMERCIAL MIXED USE SUBDISTRICT



LIVINGSTON ROAD / VETERAN'S MEMORIAL BLVD.
COMMERCIAL INFILL SUBDISTRICT



GOODLETTE / PINE RIDGE
COMMERCIAL INFILL SUBDISTRICT



ORANGE BLOSSOM / AIRPORT CROSSROADS
COMMERCIAL SUBDISTRICT

AGRICULTURAL / RURAL DESIGNATION



AGRICULTURAL/RURAL MIXED USE DISTRICT

RURAL COMMERCIAL SUBDISTRICT



CORKSCREW ISLAND NEIGHBORHOOD
COMMERCIAL SUBDISTRICT



RURAL FRINGE
MIXED USE DISTRICT



RECEIVING LANDS



SENDING LANDS



NEUTRAL LANDS



RURAL SETTLEMENT AREA DISTRICT



RURAL INDUSTRIAL DISTRICT



ESTATES DESIGNATION



CONSERVATION DESIGNATION

OVERLAYS AND SPECIAL FEATURES



INCORPORATED AREAS



COASTAL HIGH HAZARD AREA



AREA OF CRITICAL STATE CONCERN OVERLAY



AIRPORT NOISE AREA OVERLAY



NATURAL RESOURCE
PROTECTION AREA (NRPA) OVERLAY



BAYSHORE/GATEWAY TRIANGLE
REDEVELOPMENT OVERLAY



RURAL LANDS
STEWARDSHIP AREA OVERLAY



URBAN-RURAL FRINGE
TRANSITION ZONE OVERLAY



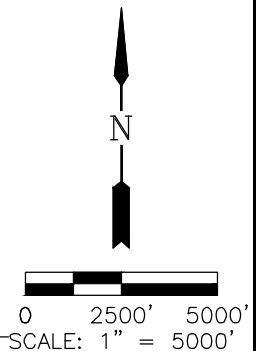
NORTH BELLE MEADE OVERLAY



INTERCHANGE

NOTE :

- (1) THIS MAP CAN NOT BE INTERPRETED WITHOUT THE GOALS, OBJECTIVES AND POLICIES OF THE COLLIER COUNTY GROWTH MANAGEMENT PLAN.
- (2) THE FUTURE LAND USE MAP SERIES INCLUDES NUMEROUS MAPS IN ADDITION TO THIS COUNTYWIDE FUTURE LAND USE MAP; THESE MAPS ARE LISTED AND LOCATED AT THE END OF THE FUTURE LAND USE ELEMENT TEXT.
- (3) MOST SUBDISTRICTS AS DEPICTED MAY NOT BE TO SCALE.
THE FUTURE LAND USE MAP SERIES DEPICTS THESE SUBDISTRICTS TO SCALE.
- (4) THE CONSERVATION DESIGNATION IS SUBJECT TO CHANGE AS AREAS ARE ACQUIRED AND MAY INCLUDE OUTPARCELS.
- (5) REFER TO THE GOLDEN GATE AREA MASTER PLAN AND THE IMMOKALEE AREA MASTER PLAN FOR FUTURE LAND USE MAPS OF THOSE COMMUNITIES.



HENDRY COUNTY

LEGEND



GradyMinor

Bonita Springs 239.947.1144
Fort Myers 239.690.4380

Civil Engineers • Land Surveyors • Planners • Landscape Architects
CERT. OF AUTH. EB 0005151 CERT. OF AUTH. LB 0005151 BUSINESS LC 26000266

www.GradyMinor.com

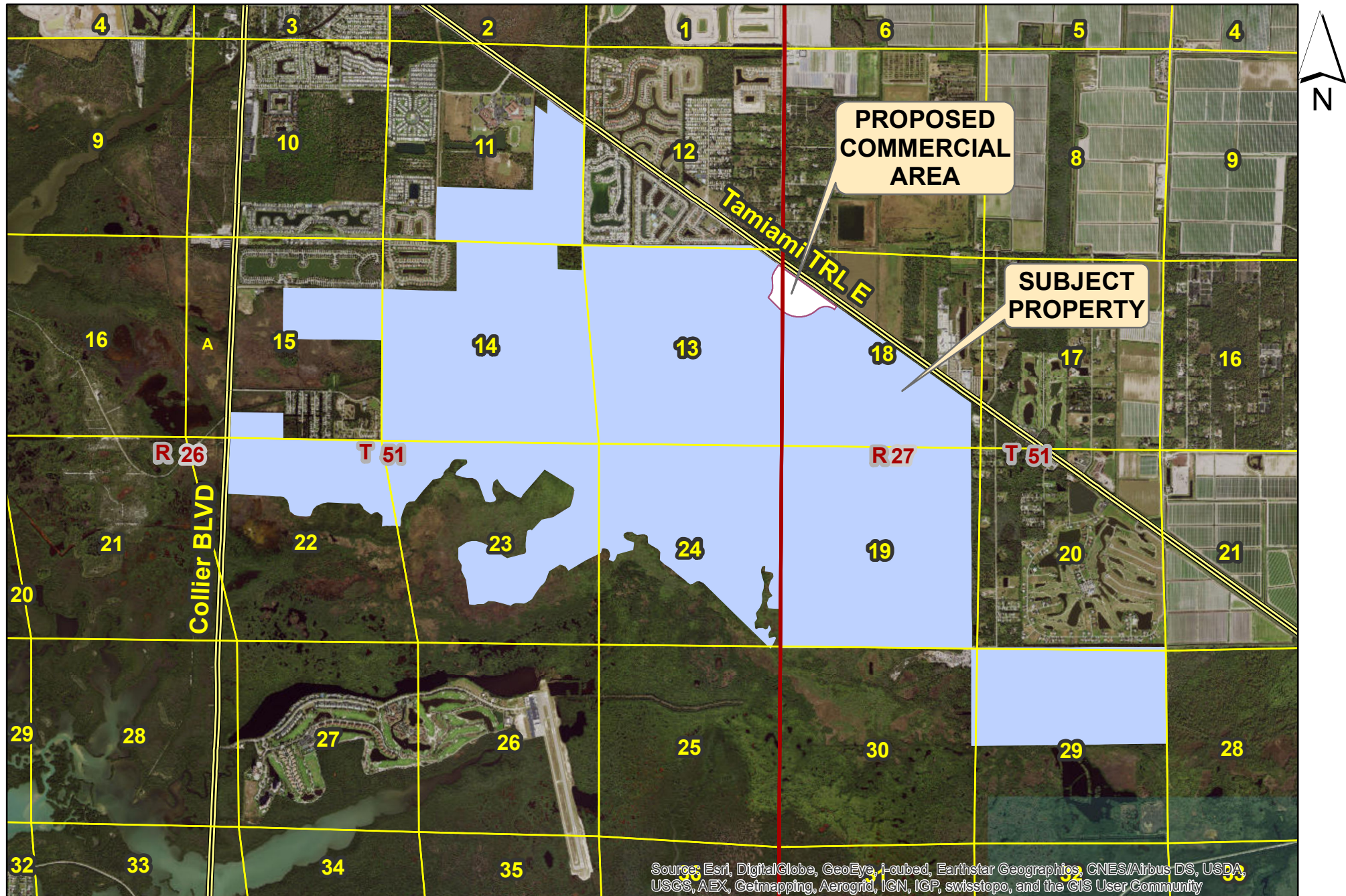
Q. Grady Minor and Associates, P.A.

MARCO SHORES / FIDDLER'S CREEK GMPA

EXHIBIT V.B
EXISTING FUTURE LAND USE MAP

SCALE:
1" = 5,000'
JOB CODE:
FCPUD
DATE:
NOV 2016
FILE NAME:
FC GMPA EXHIBIT VB
SHEET 3 OF 3

Marco Shores / Fiddlers Creek DRI / PUD Location Map



Marco Shores / Fiddler's Creek GMPA

Exhibit V.B2

Future Land Use Designations Summary

Subject Property = 3,931.99± acres

Urban Designation, Mixed Use Subdistrict, Urban Coastal Fringe Subdistrict = 1,956.92± acres

Urban Designation, Mixed Use Subdistrict, Urban Residential Fringe Subdistrict = 606.77± acres

Agricultural/Rural Designation, Rural Fringe Mixed Use District, Neutral Lands = 1,163.83± acres

Conservation Designation = 203.62± acres

