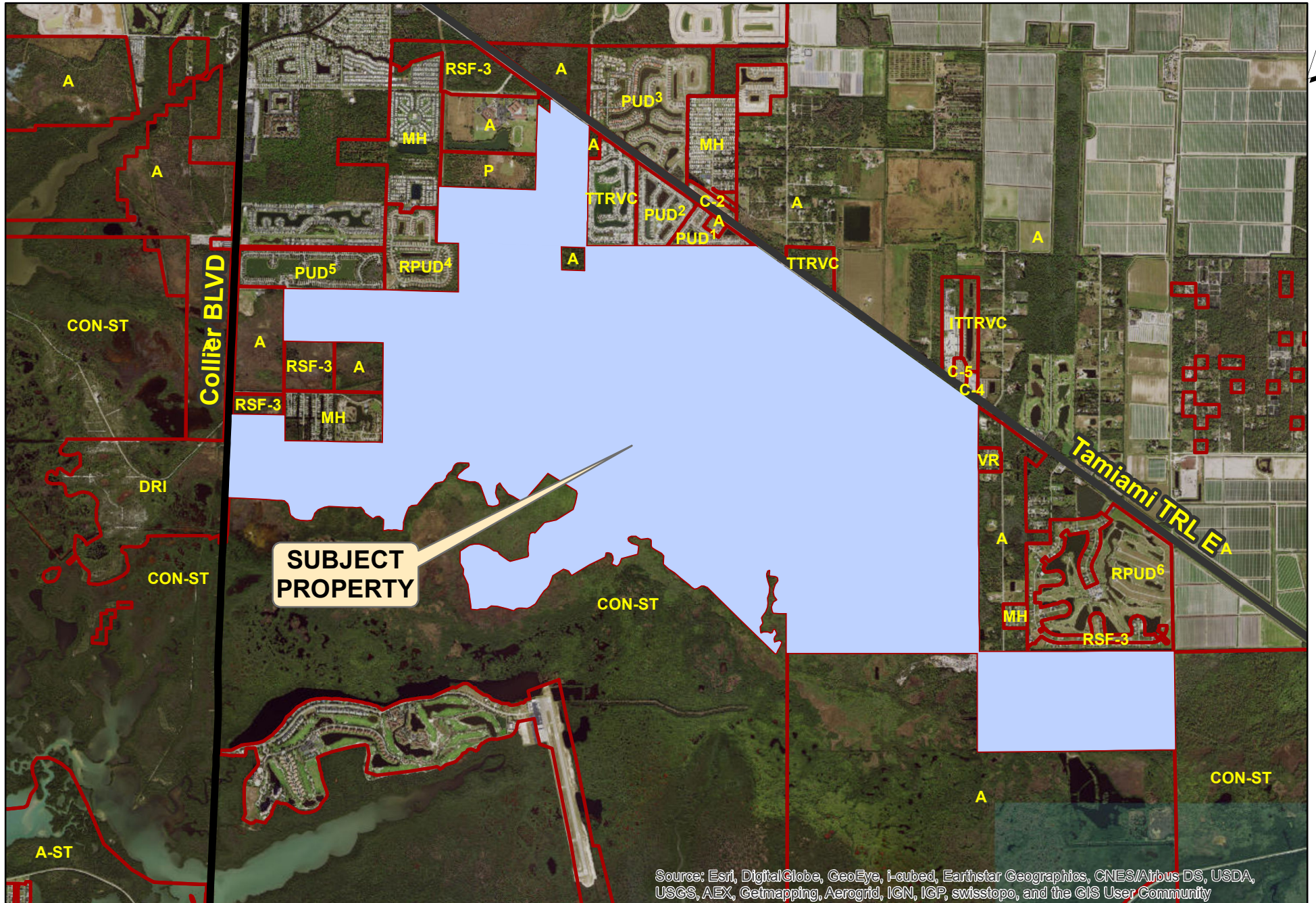


Marco Shores / Fiddlers Creek GMPA

Exhibit V.A



Marco Shores / Fiddler's Creek GMPA

Exhibit V.A1 Existing Surrounding Land Use and Zoning Summary Table

Direction	Zoning	Land Use
North	RSF-3 (Residential), A (Agricultural), MH (Mobile Home), RPUD (Residential Planned Unit Development), C-2 (Commercial Convenience), C-4 (General Commercial), C-5 (Heavy Commercial), I (Industrial), TTRVC (Travel trailer recreational vehicle campground), PUD (Planned Unit Development) and P (Public use)	Developed and undeveloped agricultural, residential, commercial, industrial, recreational vehicle and mobile home uses PUD ¹ (Charlee Estates – residential) PUD ² (Paradise Pointe RV Resort – residential) PUD ³ (Walnut lakes – residential) RPUD ⁴ (Copper Cove Preserve – residential) RPUD ⁵ (Pelican Lake – residential) RPUD ⁶ (Boyne South – residential)
West	A (Agricultural), P (Public use), RSF-3 (Residential), MH (Mobile Home), DRI (Development of Regional Impact) and CON-ST (Conservation-Special Treatment)	Developed and undeveloped agricultural, residential, mobile home and conservation uses
South	CON-ST (Conservation- Special Treatment) and A (Agricultural)	Conservation land and undeveloped agricultural uses
East	MH (Mobile Home), A (Agricultural), VR (Village Residential), TTRVC (Travel trailer recreational vehicle campground), CON-ST (Conservation-Special Treatment) and PUD (Planned Unit Development)	Developed and undeveloped residential and recreational vehicle uses PUD ³ (Walnut lakes – residential)